

MON SHERI — BROWARD



Builder: BROWARD

Year Built: 1990

Model: Raised Pilothouse

Price: \$699,000 USD

Location: United States

LOA: 108' (32.92mm)

Beam: 20

Min Draft: 5' 6" (1.68mm)

Max Draft: 5' 9" (1.75mm)

Cruise Speed: 13 Knots Kts. (15 MPH)

Max Speed: 15 Knots Kts. (17 MPH)

Our experienced yacht broker, Andrey Shestakov, will help you choose and buy a yacht that best suits your needs **MON SHERI — BROWARD** from **our catalogue**. Presently, at **Shestakov Yacht Sales Inc.**, we have a wide variety of yachts available on **our sale's list**. We also work in close contact with all the big **yacht manufacturers** from all over the world.

If you would like to buy a yacht **MON SHERI — BROWARD** or would like help answering any questions concerning purchasing, selling or chartering a yacht, please call **+1(954)274-4435**

TABLE OF CONTENTS

| | |
|------------------------------|----|
| TABLE OF CONTENTS | 2 |
| SPECIFICATIONS | 6 |
| Overview | 6 |
| Basic Information | 6 |
| Dimensions | 6 |
| Speed, Capacities and Weight | 6 |
| Accommodations | 7 |
| Hull and Deck Information | 7 |
| Engine Information | 7 |
| PHOTOS | 8 |
| Salon Looking Forward | 8 |
| Salon Couch to Port | 8 |
| Salon to Port | 8 |
| Salon to Starboard | 8 |
| Salon to Starboard | 8 |
| Salon Looking Aft | 8 |
| Dining Area | 9 |
| Dining Table | 9 |
| Starboard Companionway | 9 |
| Forward to Dining Area | 9 |
| Day Head | 10 |
| Pilothouse Entrance | 10 |
| Pilothouse | 10 |
| Pilothouse Helm Seat | 10 |
| Galley | 10 |
| Galley | 10 |
| Galley | 11 |
| Galley | 11 |

| | |
|-----------------------------|----|
| Crew Cabin | 11 |
| Crew Head | 11 |
| Lower Companionway | 12 |
| Crew Laundry | 12 |
| Owner Washer/Dryer | 12 |
| Starboard Master | 12 |
| Starboard Master | 13 |
| Starboard Master | 13 |
| Master Head | 13 |
| Starboard Master Tub | 13 |
| Port Master | 13 |
| Port Master | 13 |
| Port Master | 14 |
| Port Master | 14 |
| Port Master Head | 14 |
| Port Master Head and Shower | 14 |
| Port Queen VIP | 14 |
| Port Queen VIP | 14 |
| Port Queen VIP | 15 |
| Port Queen VIP | 15 |
| Port Queen VIP HEad | 15 |
| Port Queen VIP Shower | 15 |
| Starboard Twin Cabin | 15 |
| Starboard Twin Pullman | 15 |
| Starboard Twin Cabin | 16 |
| Starboard Twin Cabin Head | 16 |
| Starboard Twin Cabin Shower | 16 |
| Bow Area | 16 |
| Bow Sunlounge | 16 |

| | |
|-------------------------------|----|
| Side Deck Entrance | 16 |
| Aft Deck Seating | 17 |
| Aft Deck Seating | 17 |
| Aft Deck Seating | 17 |
| Aft Deck Seating | 17 |
| Aft Deck Seating | 17 |
| Aft Deck Seating | 17 |
| Aft Deck Sunshade | 18 |
| Aft Deck Bar | 18 |
| Aft Deck Boat Deck Stairs | 18 |
| Lazarette Storage | 18 |
| Lazarette | 19 |
| Lazarette Chest Freezer | 19 |
| Lazarette Commercial Icemaker | 19 |
| Flybridge Sunlounge | 19 |
| Flybridge Looking Forward | 20 |
| Flybridge Looking Aft | 20 |
| Flybridge Looking Aft | 20 |
| Flybridge Helm | 20 |
| Flybridge Helm | 20 |
| Flybridge Helm Seat | 20 |
| Boat Deck Hot Tub | 21 |
| Toys Stowed | 21 |
| Boat Deck Looking Forward | 21 |
| Boat Deck | 21 |
| New Sea Doo 1 | 21 |
| New Sea Doo 2 | 21 |
| 15' Walker Bay Tender | 22 |
| Walker Bay Tender | 22 |

| | |
|------------------------------|----|
| Starboard Engine | 22 |
| Engine Room Looking Aft | 22 |
| 2022 15 KW night generator 1 | 22 |
| 2022 15 KW night generator 2 | 22 |
| 2022 15 KW night generator 3 | 23 |
| December 2018 Yard Visit | 23 |
| December 2018 Yard Visit | 23 |
| Stabilizer Fin | 23 |
| Extension Photo | 23 |
| Underwater Lights | 23 |
| December 2018 yard visit | 24 |
| December 2018 yard visit | 24 |
| New Underwater Lights | 24 |
| Evening | 24 |
| Alternate Profile | 24 |
| CONTACTS | 25 |
| Contact details | 25 |
| Telephones | 25 |
| Office hours | 25 |
| Address | 25 |

SPECIFICATIONS

Overview

This highly customized Michigan built Broward with her 14' addition (done at Broward) offers a Flybridge, Aft Deck and Lazarette only found on extended vessels. The Aft Deck must be seen to be appreciated.

With her customized four cabin arrangement she offers the perfect charter arrangement with four nearly equal staterooms. Her modern spacious galley, updated air conditioning and recent improvements throughout make her stand out from the crowd. A change in his business plans have created a nice windfall for her next lucky owner.

Basic Information

Category: Raised Pilothouse

Sub Category: Raised Pilothouse

Model Year: 1990

Year Built: 1990

Country: United States

Dimensions

LOA: 108' (32.92mm)

Beam: 20

Min Draft: 5' 6" (1.68mm)

Max Draft: 5' 9" (1.75mm)

Speed, Capacities and Weight

Cruise Speed: 13 Knots Kts. (15 MPH) **Max Speed:** 15 Knots Kts. (17 MPH)

Gross Tonnage: 76 Pounds

Water Capacity: 1600 Gallons

Holding Tank: 1000 Gal Gallons

Fuel Capacity: 10500 Gal Gallons

Accommodations

Total Cabins: 4

Sleeps: 9

Total Heads: 5

Crew Cabin: 5

Crew Berths: 3

Crew Heads: 1

Hull and Deck Information

Hull Material: Aluminum

Deck Material: Teak

Hull Configuration: Semi-Displacement **Exterior Designer:** Broward

Interior Designer: Broward

Engine Information

Engines: 2

Manufacturer: Detroit Diesel

Engine Type: Inboard

Fuel Type: Diesel

PHOTOS

Salon Looking Forward



Salon Couch to Port



Salon to Port



Salon to Starboard



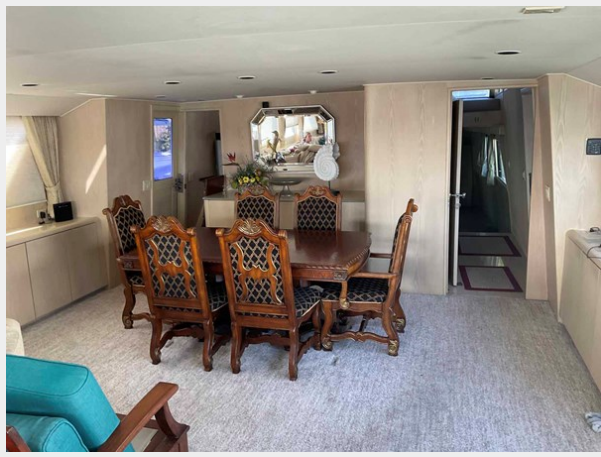
Salon to Starboard



Salon Looking Aft



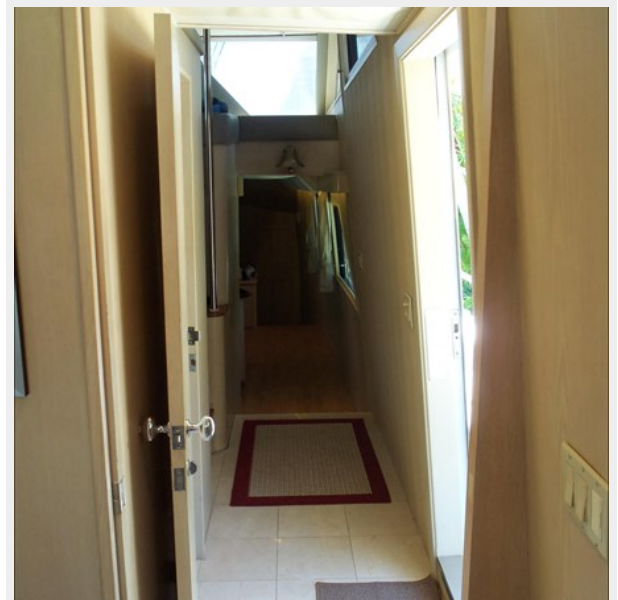
Dining Area



Dining Table



Starboard Companionway



Forward to Dining Area



Day Head



Pilothouse Entrance



Pilothouse



Pilothouse Helm Seat



Galley



Galley



Galley



Galley



Crew Cabin



Crew Head



Lower Companionway



Crew Laundry



Owner Washer/Dryer



Starboard Master



Starboard Master



Starboard Master



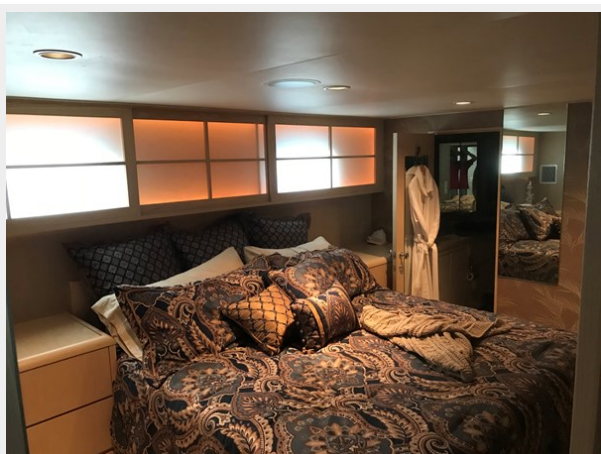
Master Head



Starboard Master Tub



Port Master



Port Master



Port Master



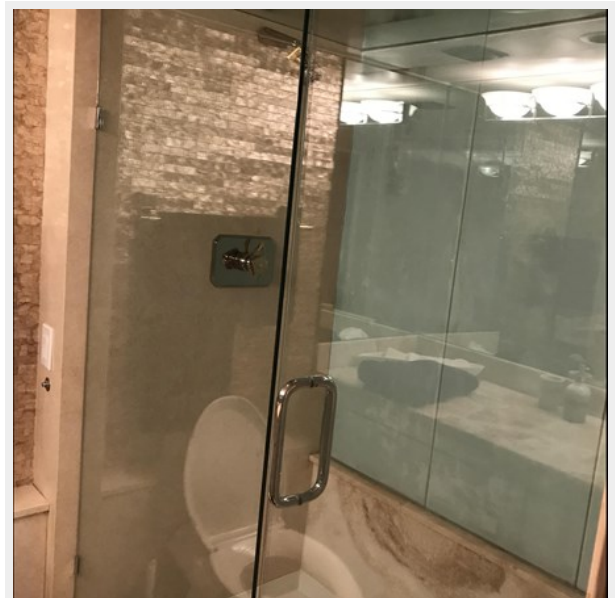
Port Master



Port Master Head



Port Master Head and Shower



Port Queen VIP



Port Queen VIP



Port Queen VIP



Port Queen VIP



Port Queen VIP HEAd



Port Queen VIP Shower



Starboard Twin Cabin



Starboard Twin Pullman



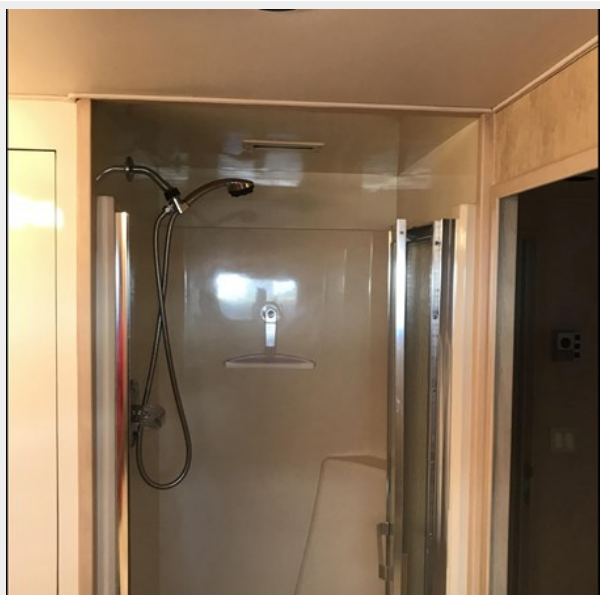
Starboard Twin Cabin



Starboard Twin Cabin Head



Starboard Twin Cabin Shower



Bow Area



Bow Sunlounge



Side Deck Entrance



Aft Deck Seating



Aft Deck Seating



Aft Deck Seating



Aft Deck Seating



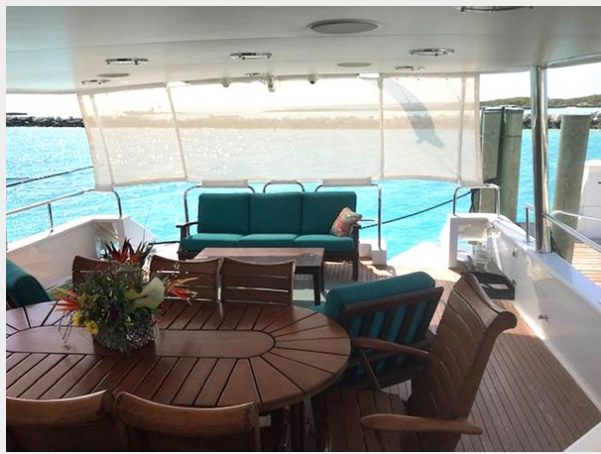
Aft Deck Seating



Aft Deck Seating



Aft Deck Sunshade



Aft Deck Bar



Aft Deck Boat Deck Stairs



Lazarette Storage



Lazarette Chest Freezer



Lazarette



Lazarette Commercial Icemaker



Flybridge Sunlounge



Flybridge Looking Forward



Flybridge Looking Aft



Flybridge Looking Aft



Flybridge Helm



Flybridge Helm



Flybridge Helm Seat



Boat Deck Hot Tub



Toys Stowed



Boat Deck Looking Forward



Boat Deck



New Sea Doo 1



New Sea Doo 2



15' Walker Bay Tender



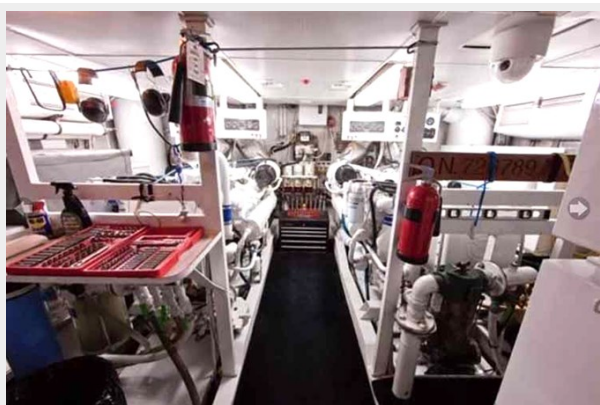
Walker Bay Tender



Starboard Engine



Engine Room Looking Aft



2022 15 KW night generator 1



2022 15 KW night generator 2



2022 15 KW night generator 3



December 2018 Yard Visit



December 2018 Yard Visit



Stabilizer Fin



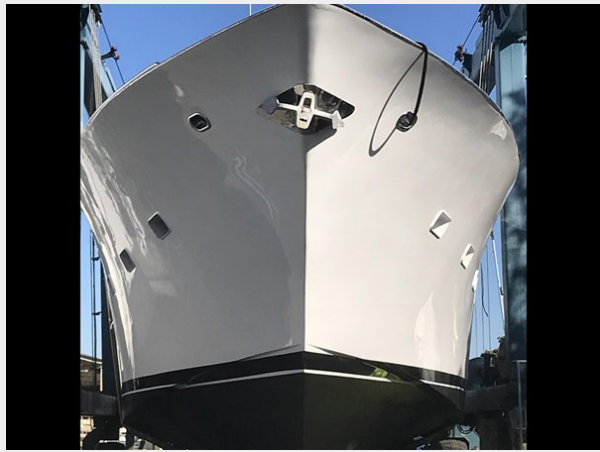
Extension Photo



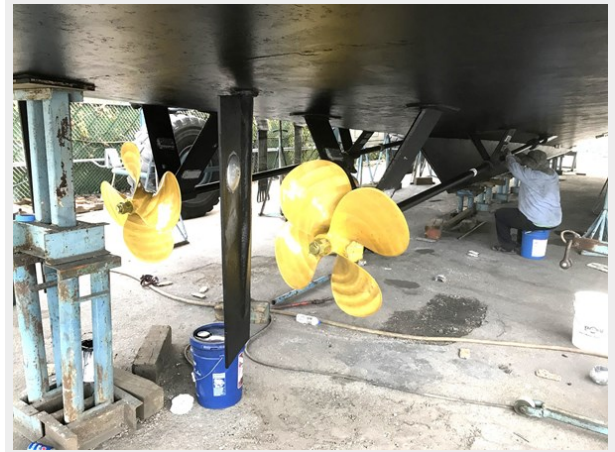
Underwater Lights



December 2018 yard visit



December 2018 yard visit



New Underwater Lights



Evening



Alternate Profile



CONTACTS

Andrey Shestakov, leading yacht broker of the sales department of Shestakov Yacht Sales Inc. Shestakov Yacht Sales Inc., the official representative of the Miami/Fort Lauderdale FL headquarters.

Contact details

Email: **andrey@shestakovyachtsales.com**

Web: shestakovyachtsales.com/en/

Telephones

USA: **+1(954)274-4435**

Office hours

Monday – Saturday: **9:00 - 21:00** EDT

Sunday: **closed**

Address



Harbour Towne Marina, 850 NE 3rd St, STE 213, Dania, FL 33004