

KATINA — BRODOSPLIT CROATIA



Builder: BRODOSPLIT CROATIA

Year Built: 2015

Model: Displacement

Price: PRICE ON APPLICATION

Location: Croatia

LOA: 196' 11" (60.02mm)

Beam: 35.08

Max Draft: 9' 7" (2.92mm)

Cruise Speed: 12 Knots Kts. (14 MPH)

Max Speed: 14.5 Knots Kts. (17 MPH)

Our experienced yacht broker, Andrey Shestakov, will help you choose and buy a yacht that best suits your needs KATINA — BRODOSPLIT CROATIA from our catalogue. Presently, at Shestakov Yacht Sales Inc., we have a wide variety of yachts available on our sale's list. We also work in close contact with all the big yacht manufacturers from all over the world.

If you would like to buy a yacht KATINA — BRODOSPLIT CROATIA or would like help answering any questions concerning purchasing, selling or chartering a yacht, please call +1(954)274-4435

TABLE OF CONTENTS

TABLE OF CONTENTS	2
SPECIFICATIONS	3
Overview	3
Basic Information	4
Dimensions	4
Speed, Capacities and Weight	4
Accommodations	4
Hull and Deck Information	5
Engine Information	5
PHOTOS	6
CONTACTS	12
Contact details	12
Telephones	12
Office hours	12
Address	12

SPECIFICATIONS

Overview

The concept for Katina was born out of a desire to create a yacht that embodied elegance, luxury, and cutting-edge technology. With meticulous attention to detail, Brodosplit collaborated with renowned interior designer Ali Getz and naval architect Boris Zanko to bring this vision to life. The result was a masterpiece that reflects the essence of sophistication and grandeur.

Katina has the beam of 10.68 m, draught of 2.9 m and a volume of 1,212 GT.

Her hull and superstructure are made of steel and wheelhouse are made of aluminum alloy.

As you step aboard Katina, you're immediately immersed in an atmosphere of sophistication and allure. The exterior exudes an aura of timeless grace, combining sleek lines with a commanding presence on the water.

The interior is characterized by a welcoming combination of dark and light patterns; with woods in satin finished oak and high gloss walnut, plush fabrics with cream neutral tones and exquisite leather.

With the capacity to accommodate up to 12 guests, Katina yacht offers an unparalleled level of comfort and luxury. Spread across six spacious cabins, including 2 Master cabins with king-size beds and 4 cabins with queen-size beds, every room offers a private haven for relaxation.

An elevator seamlessly connects all decks, ensuring effortless exploration of the yacht's various levels.

A whisky/cigar bar is found forward on the main deck alongside a large gym and with state-of-the-art equipment and a sauna. Located on her sundeck is a large al fresco dining area, two bars and a Jacuzzi.

Beyond its glamorous exterior and opulent interiors, Katina is also equipped with two powerful 1350hp Cummins engines that deliver impressive performance.

When deriving the value of a super yacht, interior volume is a key component. Katina carries the best price per ton of any vessel in her class.

She represents an incredible opportunity to purchase the perfect yacht for corporate events and special retreats. Katina can host as many as 150 guests on board. In the world of luxury yachts, few vessels manage to capture the attention and admiration of enthusiasts quite like the super yacht Katina.

Basic Information

Category: Displacement

Sub Category: Displacement

Model Year: 2015

Year Built: 2015

Country: Croatia

Dimensions

LOA: 196' 11" (60.02mm)

LWL: 174' 7" (53.21mm)

Beam: 35.08

Max Draft: 9' 7" (2.92mm)

Speed, Capacities and Weight

Cruise Speed: 12 Knots Kts. (14 MPH)

Cruise Speed Range: 4000

Max Speed: 14.5 Knots Kts. (17 MPH)

Gross Tonnage: 1212 Pounds

Water Capacity: 79420 Gallons

Fuel Capacity: 32757.33 Gal Gallons

Fuel Consumption: 85.86 Gal Gallons

Accommodations

Total Cabins: 6

Sleeps: 12

Total Heads: 6

Crew Cabin: 15

Hull and Deck Information

Hull Material: Steel

Deck Material: Teak

Hull Configuration: Displacement w/
Bulbous Bow

Hull Color: GREY

Exterior Designer: BORIS ZANKO

Hull Designer: BORIS ZANKO

Interior Designer: ALI GEZ

Engine Information

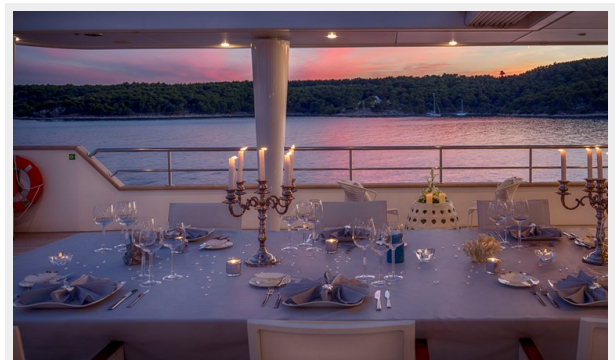
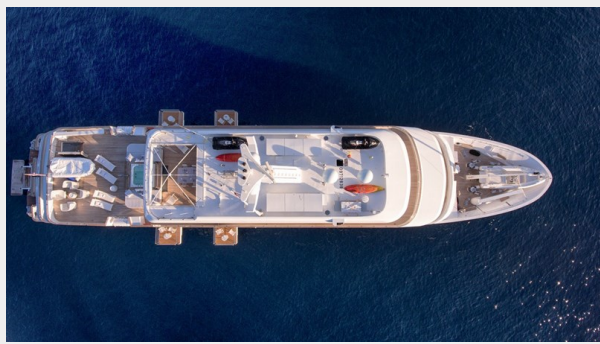
Engines: 2

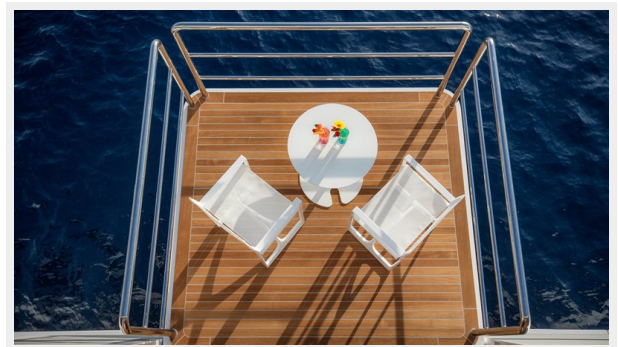
Manufacturer: Cummins KTA

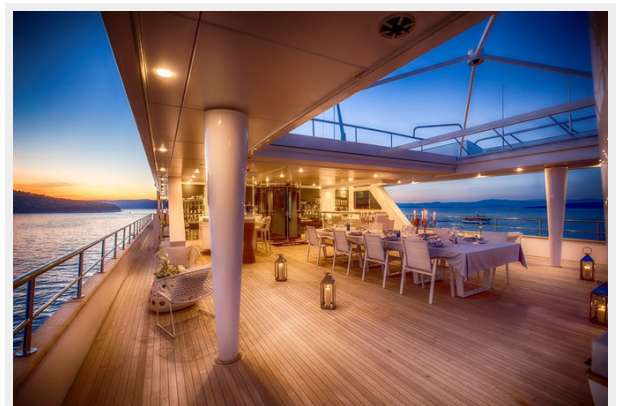
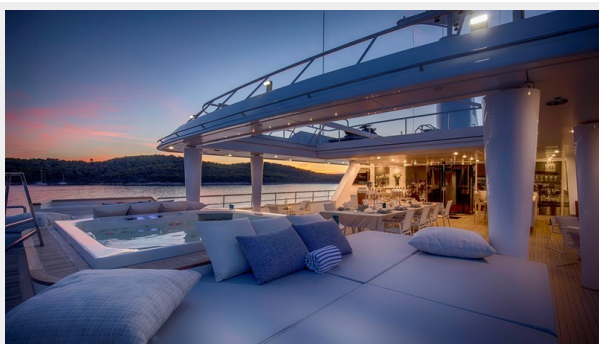
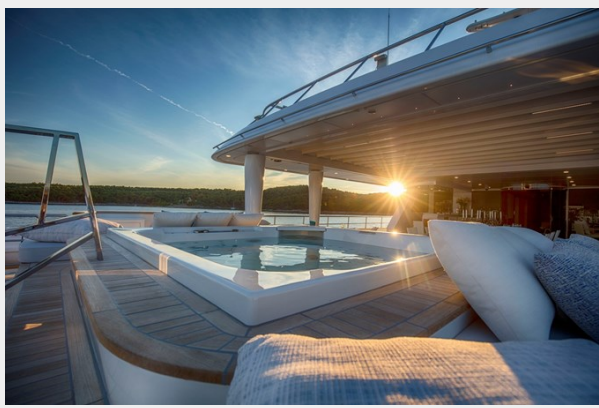
Engine Type: Inboard

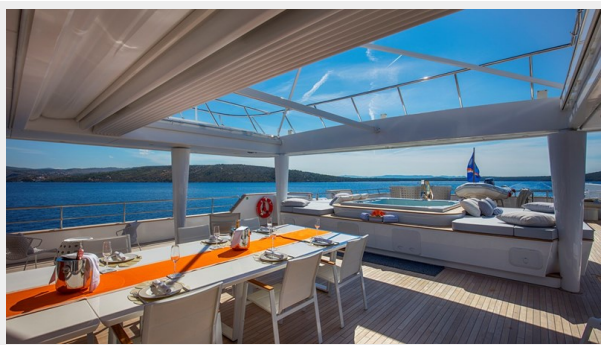
Fuel Type: Diesel

PHOTOS

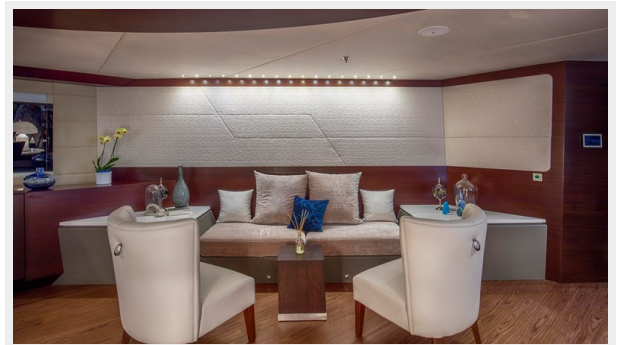












CONTACTS

Andrey Shestakov, leading yacht broker of the sales department of Shestakov Yacht Sales Inc. Shestakov Yacht Sales Inc., the official representative of the Miami/Fort Lauderdale FL headquarters.

Contact details

Email: andrey@shestakovyachtsales.com

Web: shestakovyachtsales.com/en/

Telephones

USA: +1(954)274-4435

Office hours

Monday – Saturday: **9:00 - 21:00** EDT

Sunday: **closed**

Address



Harbour Towne Marina, 850 NE 3rd St,
STE 213, Dania, FL 33004