

OCEAN PEARL - FRACTIONAL OWNERSHIP — RODRIQUEZ YACHTS



Builder: RODRIQUEZ YACHTS

Year Built: 2010

Model: Displacement

Price: €500,000 EUR

Location: Turkey

LOA: 134' 7" (41mm)

Beam: 27.55

Max Draft: 9' 3" (2.8mm)

Cruise Speed: 12 Knots Kts. (14 MPH)

Max Speed: 16 Knots Kts. (18 MPH)

Our experienced yacht broker, Andrey Shestakov, will help you choose and buy a yacht that best suits your needs **OCEAN PEARL - Fractional Ownership Vessel — RODRIQUEZ YACHTS** from our catalogue. Presently, at **Shestakov Yacht Sales Inc.**, we have a wide variety of yachts available on our sale's list. We also work in close contact with all the big yacht manufacturers from all over the world.

If you would like to buy a yacht **OCEAN PEARL - Fractional Ownership Vessel — RODRIQUEZ YACHTS** or would like help answering any questions concerning purchasing, selling or chartering a yacht, please call **+1(954)274-4435**

TABLE OF CONTENTS

TABLE OF CONTENTS	2
SPECIFICATIONS	4
Overview	4
Basic Information	5
Dimensions	5
Speed, Capacities and Weight	5
Accommodations	5
Hull and Deck Information	6
Engine Information	6
PHOTOS	7
Ocean Pearl	7
Ocean Pearl	7
Ocean Pearl	7
Ocean_Pearl_Yachtdji_0012-migliorato-nr-1	7
Ocean Pearl	7
Ocean Pearl	7
Ocean_Pearl_Yachtdji_0015-migliorato-nr	8
Ocean Pearl	8
Ocean Pearl	8
Ocean Pearl	8
Ocean Pearl	8
Ocean Pearl	8
Ocean Pearl	8
Ocean_Pearl_Yachtanp_4347	9
Ocean Pearl	9
Ocean Pearl	9
9B1A1217	9
Ocean Pearl	9
Ocean Pearl	9

9B1A1317	10
Ocean Pearl	10
Ocean Pearl	10
9B1A1156	10
Ocean Pearl	10
Ocean Pearl	10
9B1A1207	11
CONTACTS	12
Contact details	12
Telephones	12
Office hours	12
Address	12

SPECIFICATIONS

Overview

Proudly presenting the Ocean Pearl, a 2010 build, which is well-regarded in the boating community not only for its stunning design, but also for its deployment of cutting-edge technology, skilful craftsmanship and luxurious features. Ocean Pearl, a premium 41-meter (134'7") motor yacht built by the famed shipbuilders Rodriquez Yachts, offers a unique experience for boating enthusiasts looking for a distinctive time on the water. Constructed with meticulous attention to detail, the Ocean Pearl is a fine product of Rodriquez Yachts. This renowned shipyard, based out of Italy, has a long-standing reputation for designing and manufacturing superior quality yachts that provide an unmatched experience to their owners. Rodriquez Yachts are celebrated for integrating traditional craftsmanship with innovative design principles, and the result is the production of vessels that are the epitome of luxury and comfort. The Ocean Pearl is undoubtedly a prime example of Rodriquez Yachts' mastery in the craft of boat building. The Ocean Pearl exhibits its elegantly streamlined hull to perfection, ensuring not only aesthetic pleasure but also optimum performance. Its grandeur is evident from the moment you step aboard. The yacht's design showcases a luxurious, timeless sophistication, with an immaculate interior that beams class and extravagance. The interior layout of the Ocean Pearl is designed to comfortably accommodate up to twelve guests within five cabins, including a full-beam owner's suite that is outfitted with the finest amenities and decor, providing an unforgettable experience of luxury at sea. Each guest cabin is adorned with plush furnishings, state-of-the-art entertainment systems, en-suite bathrooms and plenty of storage space. In addition, the Ocean Pearl includes quarters for seven crew members who can cater to all your needs. The professional galley kitchen is fully equipped with premium appliances and designer flatware, providing the ability to prepare gourmet meals on board. The opulent main salon is adorned with plush seating arrangements, allowing guests to bask in comfort while enjoying the 360-degree views through the vessel's panoramic windows. It's the perfect place to entertain guests or relax and unwind after an exciting day at sea. In addition, the formal dining area located adjacent to the main salon offers an intimate space for hosting deliciously captivating meals. While the interiors are undoubtedly stunning, the exterior decks of Ocean Pearl are equally impressive. The foredeck includes a spacious sunbed area, ideal for days spent basking in the sun. The aft deck houses a spectacular alfresco dining area in addition to a variety of lounge seating options, making it a superb place to unwind and enjoy the scenic marine vistas. What's more, the sundeck above offers an on-deck Jacuzzi, a bar, and additional seating options, promising relaxed luxury on the high seas. Powered by two powerful engines, the Ocean Pearl ensures smooth and efficient cruising, with a top speed of approximately 17 knots and a cruising speed of 15 knots. Ideal for long-range cruises, it can achieve a range of approximately 3000 nautical miles when sailing at its cruising speed. More importantly, the Ocean Pearl is a fractional ownership vessel. This allows multiple owners to enjoy all the privileges and benefits of owning a luxury yacht without the challenges and obligations associated with sole ownership. This model offers a fabulous opportunity for yacht enthusiasts who are looking to enjoy the luxury yacht experience at a fraction of the cost. In conclusion, the 41m (134'7") Ocean Pearl, crafted by Rodriquez Yachts in

2010, is more than just a vessel. It is a statement in luxury, style, and comfort. With its spectacular interior and exterior features, paired with exceptional sea handling characteristics, the Ocean Pearl is indeed a class apart from its contemporaries. So, whether you're planning to embark on an adventurous voyage or a tranquil cruise, the Ocean Pearl has everything you need and more to make your sea journey an unforgettable one.

Basic Information

Category: Displacement

Sub Category: Displacement

Model Year: 2010

Year Built: 2010

Country: Turkey

Dimensions

LOA: 134' 7" (41mm)

Beam: 27.55

Max Draft: 9' 3" (2.8mm)

Speed, Capacities and Weight

Cruise Speed: 12 Knots Kts. (14 MPH)

Max Speed: 16 Knots Kts. (18 MPH)

Gross Tonnage: 346 Pounds

Fuel Capacity: 4358.84 Gal Gallons

Accommodations

Total Cabins: 5

Total Berths: 10

Sleeps: 12

Total Heads: 7

Crew Cabin: 7

Crew Berths: 7

Crew Heads: 4

Hull and Deck Information

Hull Material: Aluminum

Deck Material: Teak

Hull Configuration: Monohull

Hull Color: Grey

Exterior Designer: Foster+Partners

Interior Designer: Foster + Partners

Engine Information

Engines: 2

Manufacturer: CAT

Fuel Type: Diesel

PHOTOS

Ocean Pearl



Ocean Pearl



Ocean Pearl



Ocean_Pearl_Yachtdji_0012-migliorato-nr-1



Ocean Pearl



Ocean Pearl



Ocean_Pearl_Yachtdji_0015-migliorato-nr



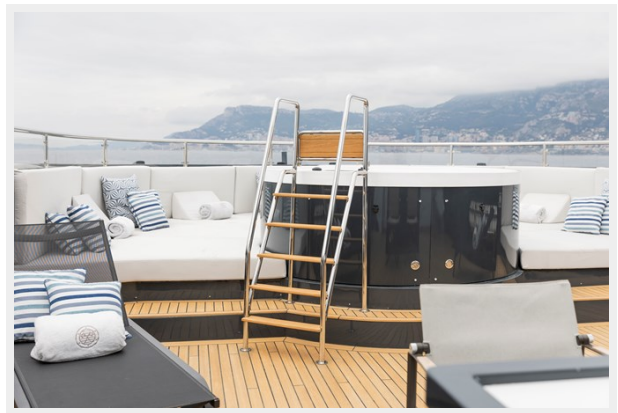
Ocean Pearl



Ocean Pearl



Ocean Pearl



Ocean Pearl



Ocean Pearl



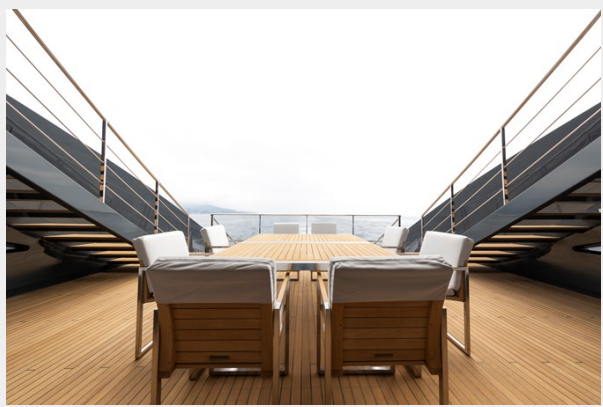
Ocean_Pearl_Yachtanp_4347



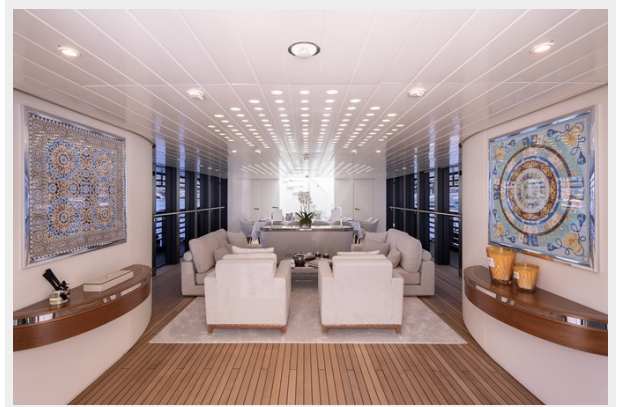
Ocean Pearl



Ocean Pearl



9B1A1217



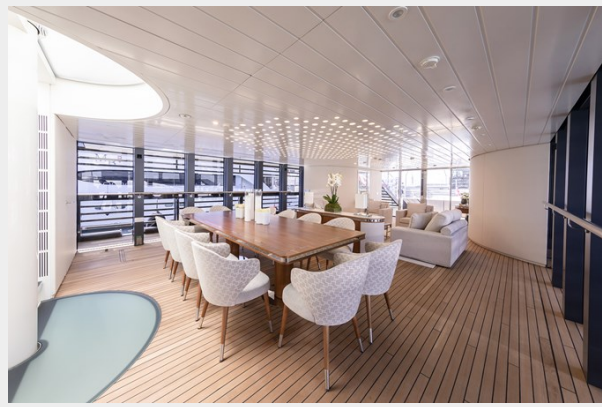
Ocean Pearl



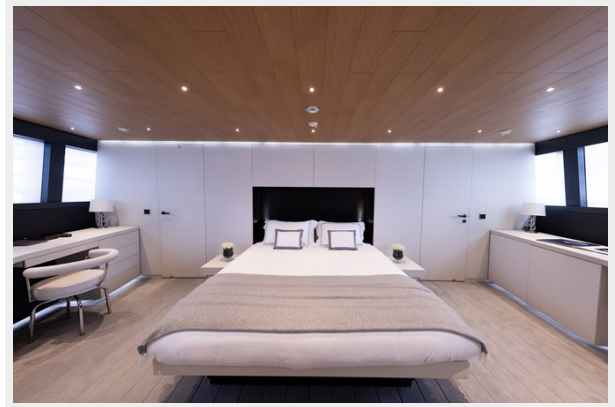
Ocean Pearl



9B1A1317



Ocean Pearl



Ocean Pearl



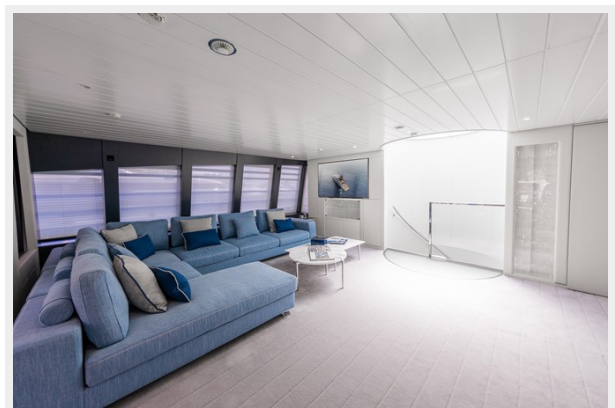
9B1A1156



Ocean Pearl



Ocean Pearl



9B1A1207



CONTACTS

Andrey Shestakov, leading yacht broker of the sales department of Shestakov Yacht Sales Inc. Shestakov Yacht Sales Inc., the official representative of the Miami/Fort Lauderdale FL headquarters.

Contact details

Email: andrey@shestakovyachtsales.com

Web: shestakovyachtsales.com/en/

Telephones

USA: +1(954)274-4435

Office hours

Monday – Saturday: **9:00 - 21:00** EDT

Sunday: **closed**

Address



Harbour Towne Marina, 850 NE 3rd St,
STE 213, Dania, FL 33004