

COUPLE OF BUCKS — GALEON



Builder: GALEON

Year Built: 2019

Model: cruiser

Price: \$734,000 USD

Location: United States

LOA: 48' 5" (14.76mm)

Beam: 13.91

Max Draft: 3' 11" (1.19mm)

Cruise Speed: 25 Knots Kts. (29 MPH)

Max Speed: 30 Knots Kts. (35 MPH)

Our experienced yacht broker, Andrey Shestakov, will help you choose and buy a yacht that best suits your needs **Couple of Bucks — GALEON** from our catalogue. Presently, at Shestakov Yacht Sales Inc., we have a wide variety of yachts available on our sale's list. We also work in close contact with all the big yacht manufacturers from all over the world.

If you would like to buy a yacht **Couple of Bucks — GALEON** or would like help answering any questions concerning purchasing, selling or chartering a yacht, please call **+1(954)274-4435**

TABLE OF CONTENTS

| | |
|------------------------------|----|
| TABLE OF CONTENTS | 2 |
| SPECIFICATIONS | 5 |
| Overview | 5 |
| Basic Information | 9 |
| Dimensions | 9 |
| Speed, Capacities and Weight | 9 |
| Accommodations | 9 |
| Hull and Deck Information | 9 |
| Engine Information | 10 |
| PHOTOS | 11 |
| Files-490 | 11 |
| Files-491 | 11 |
| Files-492 | 11 |
| Files-493 | 11 |
| Files-494 | 11 |
| Files-495 | 11 |
| Files-496 | 12 |
| Files-497 | 12 |
| Files-498 | 12 |
| Files-499 | 12 |
| Files-500 | 12 |
| Files-501 | 12 |
| Files-502 | 13 |
| Files-503 | 13 |
| Files-504 | 13 |
| Files-505 | 13 |
| Files-506 | 13 |
| Files-507 | 13 |

| | |
|-----------|----|
| Files-508 | 14 |
| Files-509 | 14 |
| Files-510 | 14 |
| Files-511 | 14 |
| Files-512 | 14 |
| Files-513 | 14 |
| Files-514 | 15 |
| Files-515 | 15 |
| Files-516 | 15 |
| Files-517 | 15 |
| Files-518 | 15 |
| Files-519 | 15 |
| Files-520 | 16 |
| Files-521 | 16 |
| Files-522 | 16 |
| Files-523 | 16 |
| Files-524 | 16 |
| Files-525 | 16 |
| Files-526 | 17 |
| Files-527 | 17 |
| Files-528 | 17 |
| Files-529 | 17 |
| Files-530 | 17 |
| Files-531 | 17 |
| Files-532 | 18 |
| Files-533 | 18 |
| Files-534 | 18 |
| Files-535 | 18 |
| Files-536 | 18 |

| | |
|-----------------|----|
| Files-537 | 18 |
| Files-538 | 19 |
| Files-539 | 19 |
| Files-540 | 19 |
| Files-541 | 19 |
| Files-543 | 19 |
| Files-544 | 19 |
| Files-545 | 20 |
| Files-546 | 20 |
| Files-547 | 20 |
| CONTACTS | 21 |
| Contact details | 21 |
| Telephones | 21 |
| Office hours | 21 |
| Address | 21 |

SPECIFICATIONS

Overview

Prepped for immediate sale, with engine warranty remaining, and used in the primarily fresh water of the Northern Chesapeake Bay, this is the best available example of Galeons popular 485HTS!

Reduced 35K, the boat is stored in the water to facilitate a winter sale

Factory Volvo warranty remains on the **IPS 600s** which propel the boat at a **cruise of 25 knots** and a **top speed of 30 knots**. The **IPS joystick** makes docking incredibly easy and drastically stems the learning curve. Running changes and upgrades from previous model years included **UV tint on the sunroom windows, increased air conditioning, and the Zipwake automatic interceptor system** – resulting in reduced time to plane and automatic pitch and roll stabilization. An incredibly **versatile sunroom** separates the 485HTS from the rest of its class. The **sliding doors** disappear into the engine room bulkhead. That coupled with a **massive, aggressively raked sunroof** and **opening helm window** give the feeling of a totally **open cockpit** when desired.

A true shipyard where almost all components are made on site, **Galeon** quickly become one of the most popular brands in the United States. Built for the rough waters of the Baltic Sea, Galeons are known for their stout ride thanks in part to **a full fiberglass hull from the waterline to keel**. This is not only safer, but also puts more weight in the keel to better handle all types of sea conditions.

Below is a list of upgrades, options, and notable features:

- **All new batteries** (04/2023)
- **Swim platform and cockpit teak sanded** (08/23)
- **Pods resealed** (02/2024)
- **Pods serviced** (02/2024)
- **New helm deck thermostat boards** (03/24)
- **FLIR Camera**
- **Custom chaise lounge made for bow sunpad**
- **Engine and generator service** (11/2023)
- **Upgraded custom linens** for both staterooms
- **UV window tint for cockpit glass**
- **Volvo Penta IPS 600s with joystick, high mode, cruise control, and single lever** (350 hours)
- **Hydraulic, teak-laid swim platform with 882lbs capacity**
- **Upgraded sunroom air conditioning**
- **Comfort package**
 - Trip computer

- Cablemaster, Glenndenning with 50 ft. cord
- Raymarine Axiom Chartplotter and Fish Finder
 - Raymarine sonar transducer
 - Raymarine Digital 4.0 kW Radome Radar
- Raymarine VHF RAY91 with Automatic Identification System (AIS) receiver, remote speaker, and antenna
- Raymarine autopilot with control unit
- TV, LED 32" in Salon with BluRay DVD player
- **Luxury Package**
 - Carpet runners for wood floor in salon
 - Refrigerator in cockpit
 - Manual sunshade on bow deck
 - Hydraulic bathing platform, teak laid – 882lb capacity
 - Swim platform chocks
 - TV, LED 32" in master with BluRay DVD player
 - TV, LED 24" in bow cabin
- **Tender/toy garage**
- **Upgraded Zipwake interceptors with automatic pitch and roll control**
- **Electric sunshade in cockpit**
- TV in cockpit (prep only)
- **Dark Walnut cabinetry in matte finish**
- **Misty Grey wood floor in Salon**
- **Wooden shutters**
- Beige interior color scheme
- **Covers for front and side windows at helm deck**
- Cover for cockpit sofa
- Covers, bimini, and shades to be black
- **Pedestal table** in aft cockpit

The **bow area** is easily accessed from the cockpit with **steps on either side** and wide walkways. Customized from new, the sunpad backrests are adjustable and will incline, creating a **chaise-style lounge**. A **manual bimini** easily folds up to keep the sun pad shaded. The **windlass** is sunken below a deck hatch, which gives more deck space and eliminates a large tripping hazard found on most boats.

The **cockpit** also has teak decks and **U-shaped seating** with a durable **fiberglass table**. The table sits on a hatch that gives access to the **tender/toy garage**, without having to go to the swim platform, a feature that is nice when seas or weather don't allow for easy or safe swim platform access. A **engine room day hatch** sits just outside the sunroom which gives easy access to the **Fisher Panda generator** and most all essential breakers. For more involved access, the floor of the garage opens and gives excellent access to both **engines and transmissions**.

The **helm deck** area is where the 485HTS transforms into one of the most versatile express cruisers in its class. Two **oversized air conditioners** keep the captain and crew cool even on the hottest of days. But, with just the push of buttons, the helm deck becomes an entirely open

area. Both the massive **sunroof** and starboard **side window** retract. Furthermore, the **sliding salon doors** lower into the bulkhead, leaving no evidence they are even there. Very few boats, and almost none in class, allow the helm to be **transformed from fully enclosed and climate controlled, to open**. This eliminates the need to decide, when purchasing a boat, which style is preferred and truly offers the best of both worlds.

To the port side of the sunroom sits a **U-shaped companion seating around a natural teak table**. The starboard side has a **large console with under-counter refrigerator and storage**. The entire sunroom is **teak decked**, giving the rich yacht feel while keeping the floors out of direct UV sunlight and eliminating wear and tear. The **helm** is to the starboard side of the sunroom. The **helm seat** is double wide with a **flip up bolster** for standing or sitting. When standing, a **false floor** drops down from the helm to add about 4-5" to the helm area and let the captain stand taller in the boat. An ergonomically laid out helm has a **center steering wheel** flanked by **stainless steel cupholders**. A **Raymarine Axiom** unit with **AIS** and **4kW radome radar** sit front and center. The 7" Volvo display is manufactured by **Garmin** so it features a chartplotter with preloaded charts, perfect as a backup, while also providing all engine vitals. **Raymarine autopilot** sits to port which will integrate into the chartplotter to follow **auto-routing**, which makes long range cruising easy and stress-free even in the worst of conditions.

Lightning fast, **electric trim interceptors** automatically deploy to keep the boat on an **even pitch and roll**. This is a needed change from the standard hydraulic trim tabs of previous model years. The **IPS Joystick** is on the starboard bulkhead of the helm. The most **finite and precise joystick in the market today**, IPS makes docking incredibly easy no matter how the current or wind are affecting the boat. Having been around for seventeen years, the technology is time tested and dialed in.

The **salon** houses a **sofa** to starboard and a **galley** forward on the port side of the boat. The entire salon and galley area have **hardwood flooring** but also a removeable **carpet runner** that blankets the entire floor when extra protection is needed. Large **hull side windows** and an **overhead skylight** flood the area with natural light that can just as easily disappear with **wooden blinds** and a **shade**. Unlike most boats this size, the boat has **eight opening portholes** below deck, one of which is centerline in the sofa for added air flow when desired. The **salon table** can stay closed as a **coffee table** or open to serve as a **dining table**, and the high-low hardware allows it to drop down and through the help of a filler cushion, **convert to another berth**. Easy access to the **main distribution panel** is on the aft bulkhead, at the captains fingertips immediately entering the salon from the helm deck. A **32" TV** sits on the forward bulkhead of the salon as well for added comfort when relaxing below deck.

The **galley** features all the comforts of home. The **L-shaped countertop** gives lots of space for preparing and serving meals. Plenty of **overhead and under counter storage** give plenty of pantry space and storage for cooking equipment. Well placed **extra galley outlets** give the ability to easily set a coffee maker, blender, etc. The **stainless steel, double basin sink** is centrally located with designated storage for the **sink cover**, when used to increase counter space. Other appliances include a **Kenyon induction cooktop**, **Samsung convection oven**, and **under counter refrigerator with freezer**.

The **master stateroom** sits aft of the salon which is a desired layout when it comes to both size of the stateroom and eliminating “hull slap” of the water. A **centerline, island berth** is flanked a decorated **Alcantara headboard** with overhead accent lighting, adjustable **reading lights**, and **sconce lighting**. A **hanging closet** sits on the aft bulkhead of the stateroom while **air conditioning** is discharged above the bed, near the ceiling, for effective cooling even on the hottest of days. Large, **scenic hull side windows** bathe the stateroom in natural light, with **opening portholes** that allow for cross ventilation. To starboard sits an impressive **storage cabinet** that spans the entire length of the stateroom. The **settee** is on the port side of the boat, perfect for relaxing separated from the salon in additional privacy while enjoying the **32” TV** that sits on the forward bulkhead.

Much like the day head, the **master head** houses a full beam, **mirrored medicine cabinet** for plenty of storage, opening in three panes. The area is climate controlled with an **air conditioning vent**, but also has an **opening porthole** when natural ventilation is desired. A **basin style sink** does not encroach on the under-counter storage. The **separate shower** stall has hearty **stainless-steel hardware, hull-side window, and bench seat**.

The **VIP stateroom** sits forward with a mostly **walk-around queen berth**, eliminating much of the hassle of making the bed in typical VIP staterooms. **Nine overhead and bedside storage lockers** surround the bed giving guests plenty of storage options, added to by two large **drawers under the bed**. A large **hanging locker** sits to port on the aft bulkhead while the starboard aft bulkhead features a **24” TV and vanity** that can also be used as a **desk** in today’s age of remote working. **Overhead strip lighting, ceiling lights, and reading lights** keep the stateroom well lit. When natural light is desired, large **hullside windows** are revealed by raising the **wooden blinds**, and a massive **overhead skylight** can flood the cabin in natural light. For fresh air, two **opening portholes** and open to air the boat out when needed.

The **day head** is accessed either through the salon or private, ensuite access from the VIP cabin. It features a **basin style sink** as to not take storage away from the cabinet below the countertop. An extra wide, mirrored **medicine cabinet** opens to give plenty of storage for toiletries and towels. Another large **hullside window** is revealed through the wooden blinds which brightens up the head when needed. The **Tecma head system** utilizes a **macerator pump** instead of a vacuum pump, which eliminates much of the routine plumbing maintenance resulting from a vaccuuflush system. The shower area has an **extractor fan and air conditioning vent** to aid in air flow. When needed, the **porthole** can be opened as well to allow for even more airflow. An extra large shower for a boat of this size, the beefy stainless steel hardware has a **grab handle, shower wand with holder, and mixing tap**.

The boat is located offsite, please call ahead to schedule an appointment

Basic Information

Category: cruiser

Sub Category: Express

Model Year: 2020

Year Built: 2019

Country: United States

Dimensions

LOA: 48' 5" (14.76mm)

LOD: 43' 7" (13.28mm)

Beam: 13.91

Max Draft: 3' 11" (1.19mm)

Speed, Capacities and Weight

Cruise Speed: 25 Knots Kts. (29 MPH)

Max Speed: 30 Knots Kts. (35 MPH)

Water Capacity: 122 Gallons

Holding Tank: 37 Gal Gallons

Fuel Capacity: 317 Gal Gallons

Accommodations

Total Cabins: 2

Total Berths: 3

Sleeps: 6

Total Heads: 2

Hull and Deck Information

Hull Material: Fiberglass

Deck Material: Fiberglass

Hull Configuration: Modified V-Hull

Hull Color: White

Engine Information

Engines: 2

Manufacturer: Volvo Penta

Engine Type: Inboard

Fuel Type: Diesel

PHOTOS

Files-490



Files-491



Files-492



Files-493



Files-494



Files-495



Files-496



Files-497



Files-498



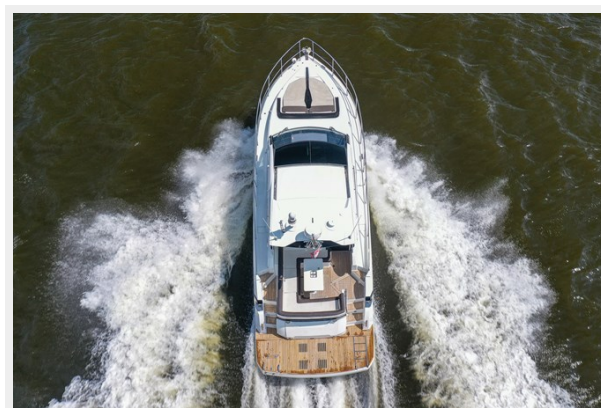
Files-499



Files-500



Files-501



Files-502



Files-503



Files-504



Files-505



Files-506



Files-507



Files-508



Files-509



Files-510



Files-511



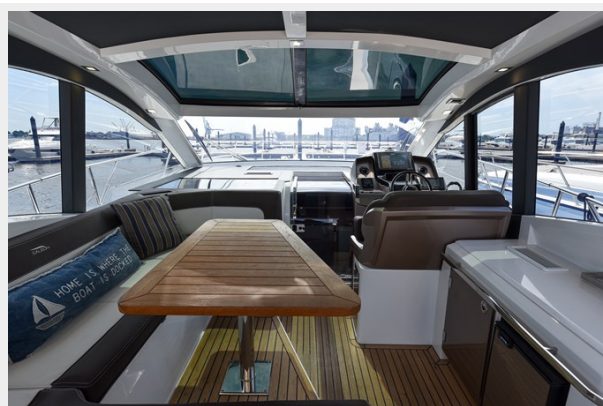
Files-512



Files-513



Files-514



Files-515



Files-516



Files-517



Files-518



Files-519



Files-520



Files-521



Files-522



Files-523



Files-524



Files-525



Files-526



Files-527



Files-528



Files-529



Files-530



Files-531



Files-532



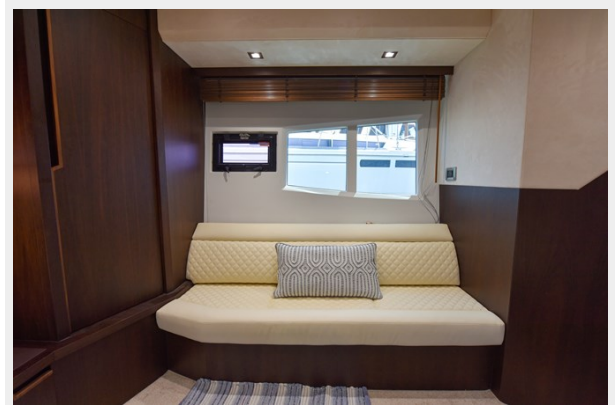
Files-533



Files-534



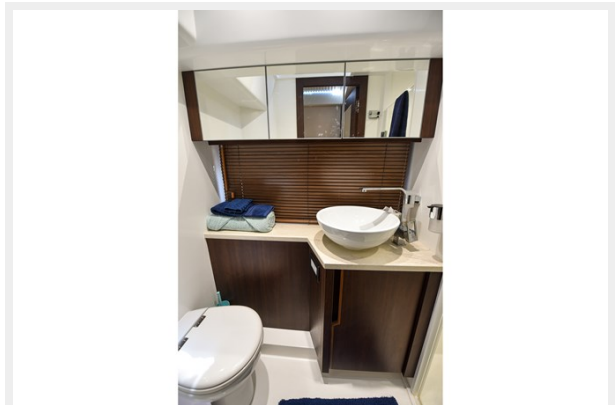
Files-535



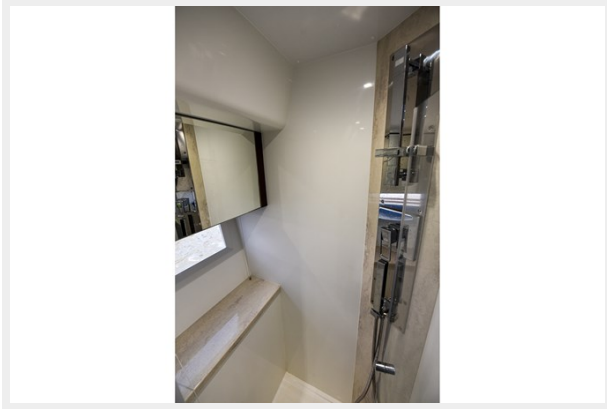
Files-536



Files-537



Files-538



Files-539



Files-540



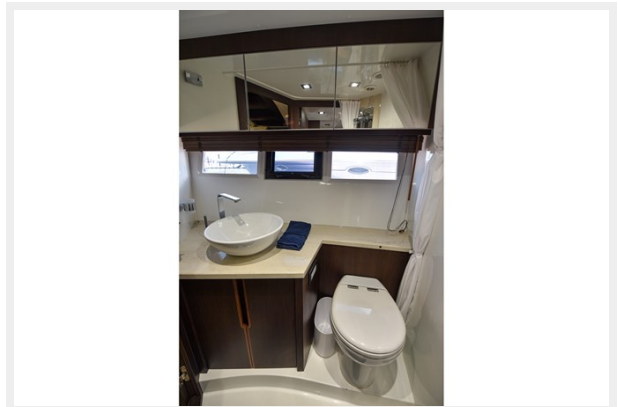
Files-541



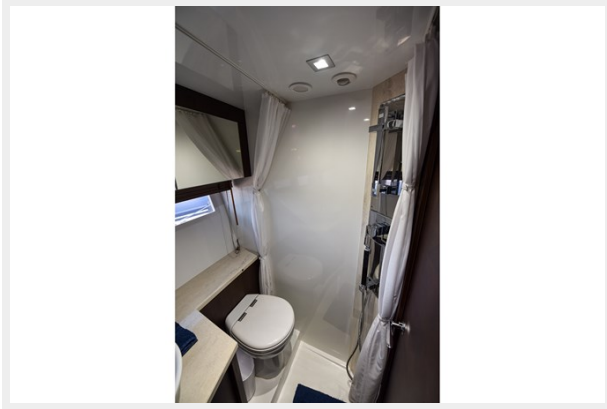
Files-543



Files-544



Files-545



Files-546



Files-547



CONTACTS

Andrey Shestakov, leading yacht broker of the sales department of Shestakov Yacht Sales Inc. Shestakov Yacht Sales Inc., the official representative of the Miami/Fort Lauderdale FL headquarters.

Contact details

Email: **andrey@shestakovyachtsales.com**

Web: shestakovyachtsales.com/en/

Telephones

USA: **+1(954)274-4435**

Office hours

Monday – Saturday: **9:00 - 21:00 EDT**

Sunday: **closed**

Address



Harbour Towne Marina, 850 NE 3rd St,
STE 213, Dania, FL 33004