

COUPLE OF BUCKS — GALEON



Судостроитель: GALEON

Год постройки: 2019

Модель: Крейсер

Цена: \$734,000 USD

Местонахождение: United States

Длина общая: 48' 5" (14.76mm)

Ширина: 13.91

Макс. осадка: 3' 11" (1.19mm)

Крейс. скорость: 25 Knots Kts. (29 MPH)

Макс. скорость: 30 Knots Kts. (35 MPH)

Купить **Couple of Bucks — GALEON** а также выбрать подходящую вам яхту из нашего каталога яхт вам поможет опытный яхтенный брокер Андрей Шестаков. На сегодняшний день компания **Shestakov Yacht Sales Inc.** имеет большое количество яхт в собственном списке продаж, а также тесно сотрудничает со всеми крупными яхтенными производителями по всему миру.

Для того чтобы купить яхту **Couple of Bucks — GALEON** а также проконсультироваться по любому вопросу связанному с покупкой, продажей, чартером яхт позвоните по телефону **+7(918)465-66-44**.

ОГЛАВЛЕНИЕ

ОГЛАВЛЕНИЕ	2
ХАРАКТЕРИСТИКИ	5
Обзор	5
Основная информация	9
Размеры	9
Скорость, вместимость и масса	9
Размещение	9
Корпус и палуба	9
Информация о двигателе	10
ФОТОГРАФИИ	11
Files-490	11
Files-491	11
Files-492	11
Files-493	11
Files-494	11
Files-495	11
Files-496	12
Files-497	12
Files-498	12
Files-499	12
Files-500	12
Files-501	12
Files-502	13
Files-503	13
Files-504	13
Files-505	13
Files-506	13
Files-507	13

Files-508	14
Files-509	14
Files-510	14
Files-511	14
Files-512	14
Files-513	14
Files-514	15
Files-515	15
Files-516	15
Files-517	15
Files-518	15
Files-519	15
Files-520	16
Files-521	16
Files-522	16
Files-523	16
Files-524	16
Files-525	16
Files-526	17
Files-527	17
Files-528	17
Files-529	17
Files-530	17
Files-531	17
Files-532	18
Files-533	18
Files-534	18
Files-535	18
Files-536	18

Files-537	18
Files-538	19
Files-539	19
Files-540	19
Files-541	19
Files-543	19
Files-544	19
Files-545	20
Files-546	20
Files-547	20
КОНТАКТЫ	21
Контактная информация	21
Телефоны	21
Время работы	21
Адрес	21

ХАРАКТЕРИСТИКИ

Обзор

Prepped for immediate sale, with engine warranty remaining, and used in the primarily fresh water of the Northern Chesapeake Bay, this is the best available example of Galeons popular 485HTS!

Reduced 35K, the boat is stored in the water to facilitate a winter sale

Factory Volvo warranty remains on the **IPS 600s** which propel the boat at a **cruise of 25 knots** and a **top speed of 30 knots**. The **IPS joystick** makes docking incredibly easy and drastically stems the learning curve. Running changes and upgrades from previous model years included **UV tint on the sunroom windows, increased air conditioning, and the Zipwake automatic interceptor system** – resulting in reduced time to plane and automatic pitch and roll stabilization. An incredibly **versatile sunroom** separates the 485HTS from the rest of its class. The **sliding doors** disappear into the engine room bulkhead. That coupled with a **massive, aggressively raked sunroof** and **opening helm window** give the feeling of a totally **open cockpit** when desired.

A true shipyard where almost all components are made on site, **Galeon** quickly become one of the most popular brands in the United States. Built for the rough waters of the Baltic Sea, Galeons are known for their stout ride thanks in part to **a full fiberglass hull from the waterline to keel**. This is not only safer, but also puts more weight in the keel to better handle all types of sea conditions.

Below is a list of upgrades, options, and notable features:

- **All new batteries** (04/2023)
- **Swim platform and cockpit teak sanded** (08/23)
- **Pods resealed** (02/2024)
- **Pods serviced** (02/2024)
- **New helm deck thermostat boards** (03/24)
- **FLIR Camera**
- **Custom chaise lounge made for bow sunpad**
- **Engine and generator service** (11/2023)
- **Upgraded custom linens** for both staterooms
- **UV window tint for cockpit glass**
- **Volvo Penta IPS 600s with joystick, high mode, cruise control, and single lever** (350 hours)
- **Hydraulic, teak-laid swim platform with 882lbs capacity**
- **Upgraded sunroom air conditioning**
- **Comfort package**
 - Trip computer

- Cablemaster, Glenndenning with 50 ft. cord
- Raymarine Axiom Chartplotter and Fish Finder
 - Raymarine sonar transducer
 - Raymarine Digital 4.0 kW Radome Radar
- Raymarine VHF RAY91 with Automatic Identification System (AIS) receiver, remote speaker, and antenna
- Raymarine autopilot with control unit
- TV, LED 32" in Salon with BluRay DVD player
- **Luxury Package**
 - Carpet runners for wood floor in salon
 - Refrigerator in cockpit
 - Manual sunshade on bow deck
 - Hydraulic bathing platform, teak laid – 882lb capacity
 - Swim platform chocks
 - TV, LED 32" in master with BluRay DVD player
 - TV, LED 24" in bow cabin
- **Tender/toy garage**
- **Upgraded Zipwake interceptors with automatic pitch and roll control**
- **Electric sunshade in cockpit**
- TV in cockpit (prep only)
- **Dark Walnut cabinetry in matte finish**
- **Misty Grey wood floor in Salon**
- **Wooden shutters**
- Beige interior color scheme
- **Covers for front and side windows at helm deck**
- Cover for cockpit sofa
- Covers, bimini, and shades to be black
- **Pedestal table** in aft cockpit

The **bow area** is easily accessed from the cockpit with **steps on either side** and wide walkways. Customized from new, the sunpad backrests are adjustable and will incline, creating a **chaise-style lounge**. A **manual bimini** easily folds up to keep the sun pad shaded. The **windlass** is sunken below a deck hatch, which gives more deck space and eliminates a large tripping hazard found on most boats.

The **cockpit** also has teak decks and **U-shaped seating** with a durable **fiberglass table**. The table sits on a hatch that gives access to the **tender/toy garage**, without having to go to the swim platform, a feature that is nice when seas or weather don't allow for easy or safe swim platform access. A **engine room day hatch** sits just outside the sunroom which gives easy access to the **Fisher Panda generator** and most all essential breakers. For more involved access, the floor of the garage opens and gives excellent access to both **engines and transmissions**.

The **helm deck** area is where the 485HTS transforms into one of the most versatile express cruisers in its class. Two **oversized air conditioners** keep the captain and crew cool even on the hottest of days. But, with just the push of buttons, the helm deck becomes an entirely open

area. Both the massive **sunroof** and starboard **side window** retract. Furthermore, the **sliding salon doors** lower into the bulkhead, leaving no evidence they are even there. Very few boats, and almost none in class, allow the helm to be **transformed from fully enclosed and climate controlled, to open**. This eliminates the need to decide, when purchasing a boat, which style is preferred and truly offers the best of both worlds.

To the port side of the sunroom sits a **U-shaped companion seating around a natural teak table**. The starboard side has a **large console with under-counter refrigerator and storage**. The entire sunroom is **teak decked**, giving the rich yacht feel while keeping the floors out of direct UV sunlight and eliminating wear and tear. The **helm** is to the starboard side of the sunroom. The **helm seat** is double wide with a **flip up bolster** for standing or sitting. When standing, a **false floor** drops down from the helm to add about 4-5" to the helm area and let the captain stand taller in the boat. An ergonomically laid out helm has a **center steering wheel** flanked by **stainless steel cupholders**. A **Raymarine Axiom** unit with **AIS** and **4kW radome radar** sit front and center. The 7" Volvo display is manufactured by **Garmin** so it features a chartplotter with preloaded charts, perfect as a backup, while also providing all engine vitals. **Raymarine autopilot** sits to port which will integrate into the chartplotter to follow **auto-routing**, which makes long range cruising easy and stress-free even in the worst of conditions.

Lightning fast, **electric trim interceptors** automatically deploy to keep the boat on an **even pitch and roll**. This is a needed change from the standard hydraulic trim tabs of previous model years. The **IPS Joystick** is on the starboard bulkhead of the helm. The most **finite and precise joystick in the market today**, IPS makes docking incredibly easy no matter how the current or wind are affecting the boat. Having been around for seventeen years, the technology is time tested and dialed in.

The **salon** houses a **sofa** to starboard and a **galley** forward on the port side of the boat. The entire salon and galley area have **hardwood flooring** but also a removeable **carpet runner** that blankets the entire floor when extra protection is needed. Large **hull side windows** and an **overhead skylight** flood the area with natural light that can just as easily disappear with **wooden blinds** and a **shade**. Unlike most boats this size, the boat has **eight opening portholes** below deck, one of which is centerline in the sofa for added air flow when desired. The **salon table** can stay closed as a **coffee table** or open to serve as a **dining table**, and the high-low hardware allows it to drop down and through the help of a filler cushion, **convert to another berth**. Easy access to the **main distribution panel** is on the aft bulkhead, at the captain's fingertips immediately entering the salon from the helm deck. A **32" TV** sits on the forward bulkhead of the salon as well for added comfort when relaxing below deck.

The **galley** features all the comforts of home. The **L-shaped countertop** gives lots of space for preparing and serving meals. Plenty of **overhead and under counter storage** give plenty of pantry space and storage for cooking equipment. Well placed **extra galley outlets** give the ability to easily set a coffee maker, blender, etc. The **stainless steel, double basin sink** is centrally located with designated storage for the **sink cover**, when used to increase counter space. Other appliances include a **Kenyon induction cooktop**, **Samsung convection oven**, and **under counter refrigerator with freezer**.

The **master stateroom** sits aft of the salon which is a desired layout when it comes to both size of the stateroom and eliminating “hull slap” of the water. A **centerline, island berth** is flanked a decorated **Alcantara headboard** with overhead accent lighting, adjustable **reading lights**, and **sconce lighting**. A **hanging closet** sits on the aft bulkhead of the stateroom while **air conditioning** is discharged above the bed, near the ceiling, for effective cooling even on the hottest of days. Large, **scenic hull side windows** bathe the stateroom in natural light, with **opening portholes** that allow for cross ventilation. To starboard sits an impressive **storage cabinet** that spans the entire length of the stateroom. The **settee** is on the port side of the boat, perfect for relaxing separated from the salon in additional privacy while enjoying the **32” TV** that sits on the forward bulkhead.

Much like the day head, the **master head** houses a full beam, **mirrored medicine cabinet** for plenty of storage, opening in three panes. The area is climate controlled with an **air conditioning vent**, but also has an **opening porthole** when natural ventilation is desired. A **basin style sink** does not encroach on the under-counter storage. The **separate shower** stall has hearty **stainless-steel hardware, hull-side window, and bench seat**.

The **VIP stateroom** sits forward with a mostly **walk-around queen berth**, eliminating much of the hassle of making the bed in typical VIP staterooms. **Nine overhead and bedside storage lockers** surround the bed giving guests plenty of storage options, added to by two large **drawers under the bed**. A large **hanging locker** sits to port on the aft bulkhead while the starboard aft bulkhead features a **24” TV and vanity** that can also be used as a **desk** in today’s age of remote working. **Overhead strip lighting, ceiling lights, and reading lights** keep the stateroom well lit. When natural light is desired, large **hullside windows** are revealed by raising the **wooden blinds**, and a massive **overhead skylight** can flood the cabin in natural light. For fresh air, two **opening portholes** and open to air the boat out when needed.

The **day head** is accessed either through the salon or private, ensuite access from the VIP cabin. It features a **basin style sink** as to not take storage away from the cabinet below the countertop. An extra wide, mirrored **medicine cabinet** opens to give plenty of storage for toiletries and towels. Another large **hullside window** is revealed through the wooden blinds which brightens up the head when needed. The **Tecma head system** utilizes a **macerator pump** instead of a vacuum pump, which eliminates much of the routine plumbing maintenance resulting from a vaccuuflush system. The shower area has an **extractor fan and air conditioning vent** to aid in air flow. When needed, the **porthole** can be opened as well to allow for even more airflow. An extra large shower for a boat of this size, the beefy stainless steel hardware has a **grab handle, shower wand with holder, and mixing tap**.

The boat is located offsite, please call ahead to schedule an appointment

Основная информация

Тип судна: Крейсер

Подкатегория: Express

Модельный год: 2020

Год постройки: 2019

Страна: United States

Размеры

Длина общая: 48' 5" (14.76mm)

Длина палубы: 43' 7" (13.28mm)

Ширина: 13.91

Макс. осадка: 3' 11" (1.19mm)

Скорость, вместимость и масса

Крейс. скорость: 25 Knots Kts. (29 MPH)

Макс. скорость: 30 Knots Kts. (35 MPH)

Вместимость воды: 122 Gallons

Вместимость сточного бака: 37 Gal
Gallons

Объем топливного бака: 317 Gal Gallons

Размещение

Всего кают: 2

Всего коек: 3

Спальные места: 6

Всего ком. состава: 2

Корпус и палуба

Материал корпуса: Fiberglass

Материал палубы: Fiberglass

Комплектация корпуса: Modified V-Hull

Цвет корпуса: White

Информация о двигателе

Двигатели: 2

Производитель: Volvo Penta

Тип двигателя: Inboard

Тип топлива: Diesel

ФОТОГРАФИИ

Files-490



Files-491



Files-492



Files-493



Files-494



Files-495



Files-496



Files-497



Files-498



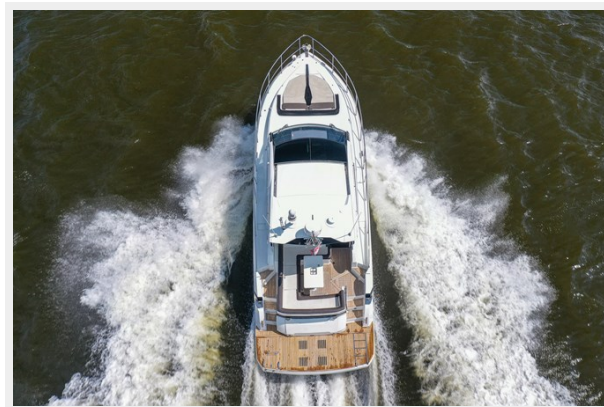
Files-499



Files-500



Files-501



Files-502



Files-503



Files-504



Files-505



Files-506



Files-507



Files-508



Files-509



Files-510



Files-511



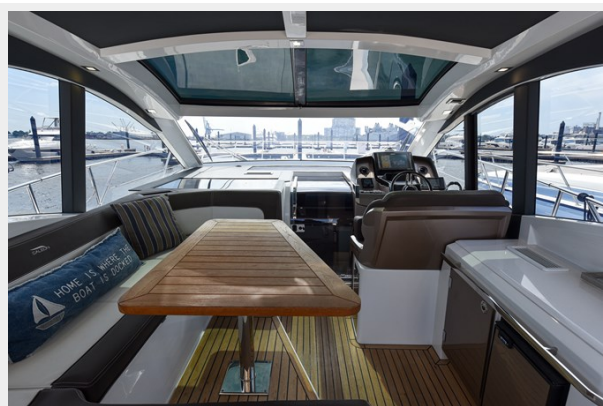
Files-512



Files-513



Files-514



Files-515



Files-516



Files-517



Files-518



Files-519



Files-520



Files-521



Files-522



Files-523



Files-524



Files-525



Files-526



Files-527



Files-528



Files-529



Files-530



Files-531



Files-532



Files-533



Files-534



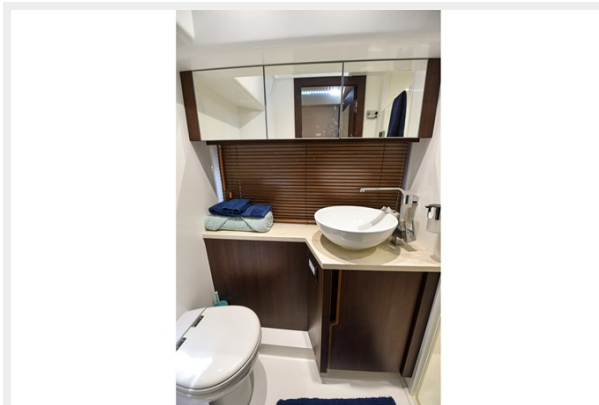
Files-535



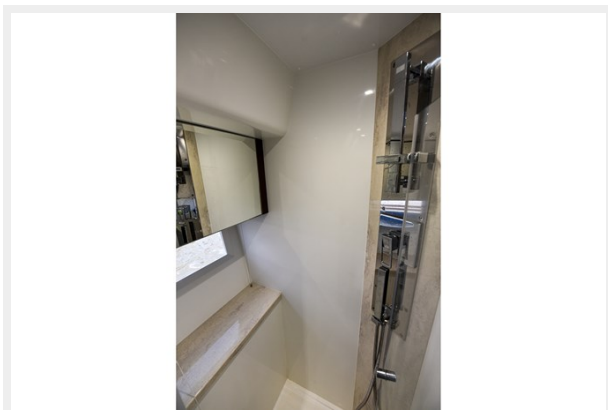
Files-536



Files-537



Files-538



Files-539



Files-540



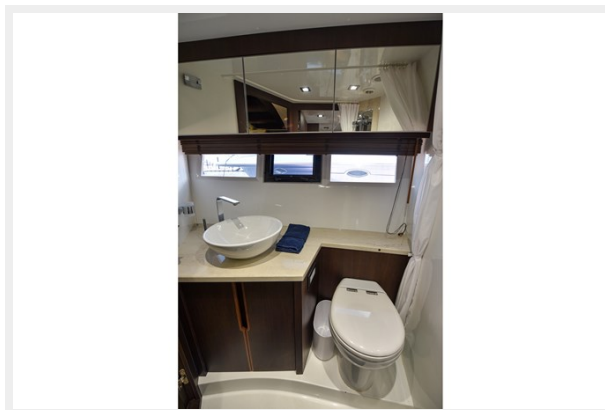
Files-541



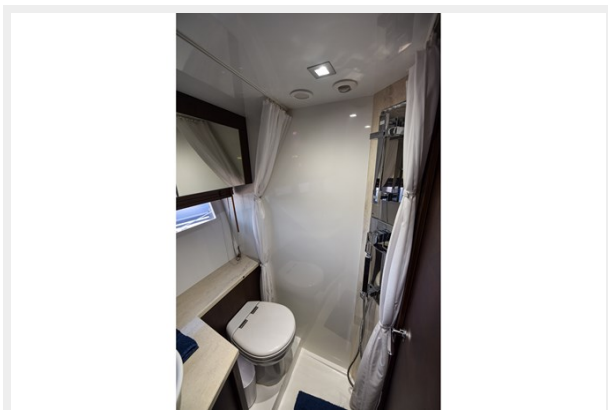
Files-543



Files-544



Files-545



Files-546



Files-547



КОНТАКТЫ

Андрей Шестаков (Andrey Shestakov) – ведущий яхтенный брокер отдела продаж яхт и судов компании Shestakov Yacht Sales Inc. Официальный представитель Shestakov Yacht Sales Inc. для русскоговорящих клиентов в центральном офисе компании в Майами/Форт Лодердейл/Флорида/США.

Контактная информация

Email: andrey@shestakovyachtsales.com

Web: shestakovyachtsales.com

Телефоны

Краснодарский край: **+7(918)465-66-44**

США, Майами, Флорида: **+1(954)274-4435**

Время работы

Понедельник – Суббота: **9:00 - 21:00**
EDT

Воскресенье: **Закрето**

Адрес



Harbour Towne Marina, 850 NE 3rd St,
STE 213, Dania, FL 33004