

GOOD HOPE — BRUNO & STILLMAN



Builder: BRUNO & STILLMAN

Year Built: 1970

Model: Sloop

Price: \$30,000 USD

Location: United States

LOA: 30' (9.14mm)

Beam: 10

Max Draft: 4' 6" (1.37mm)

Our experienced yacht broker, Andrey Shestakov, will help you choose and buy a yacht that best suits your needs **Good Hope — BRUNO & STILLMAN** from our catalogue. Presently, at Shestakov Yacht Sales Inc., we have a wide variety of yachts available on our sale's list. We also work in close contact with all the big yacht manufacturers from all over the world.

If you would like to buy a yacht **Good Hope — BRUNO & STILLMAN** or would like help answering any questions concerning purchasing, selling or chartering a yacht, please call **+1(954)274-4435**

TABLE OF CONTENTS

TABLE OF CONTENTS	2
SPECIFICATIONS	4
Overview	4
Basic Information	4
Dimensions	4
Speed, Capacities and Weight	4
Accommodations	4
Hull and Deck Information	4
Engine Information	5
PHOTOS	6
cabin top butterfly hatch & cover under sail	6
Cockpit view, dockside	6
2023 Cockpit under cover	6
Cockpit view 2, dockside	6
Cockpit cushions	6
Binnacle and wheel	6
Engine 1	7
Engine hours	7
Vee berths & cushions	7
Engine 2	7
Head	8
Settee/berths in main cabin	8
Forward bulkhead, dining table & cabin heater	8
Cabin heater	8
Aft cabin, galley to port, nav station to starboard	8
Electrical panel, gauges, & Master switch	8
Good Hope under sail	9
Galley sink, hand pump and ice box hatch	9

Good Hope on the mooring	9
CONTACTS	10
Contact details	10
Telephones	10
Office hours	10
Address	10

SPECIFICATIONS

Overview

Good Hope was built by the Bruno & Stillman yard in Newington, New Hampshire in 1970. She is hull number 7 and sail number 101 in the Friendship Sloop Society. Her current owner has sailed her since 1988 in New Hampshire and Massachusetts waters. She sleeps 4 below, has an updated engine, and is a traditional sloop that has given years of pleasure to the owner and family.

Basic Information

Category: Sloop

Model Year: 1970

Year Built: 1970

Country: United States

Dimensions

LOA: 30' (9.14mm)

Beam: 10

Max Draft: 4' 6" (1.37mm)

Speed, Capacities and Weight

Water Capacity: 60 Gallons

Fuel Capacity: 24 Gal Gallons

Accommodations

Total Heads: 1

Hull and Deck Information

Hull Material: Fiberglass

Engine Information

Engines: 1

Manufacturer: westerbeke

Engine Type: Inboard

Fuel Type: Diesel

PHOTOS

cabin top butterfly hatch & cover under sail



Cockpit view, dockside



Cockpit view 2, dockside



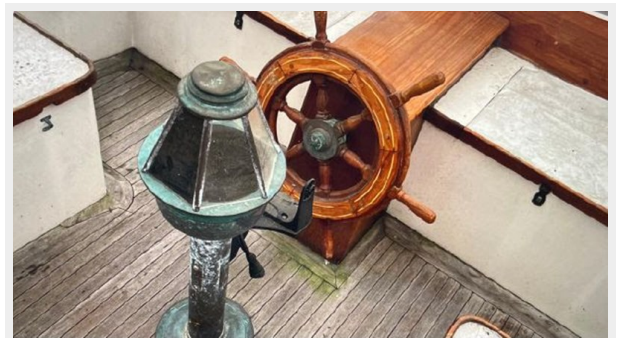
2023 Cockpit under cover



Cockpit cushions



Binnacle and wheel



Engine hours



Engine 1



Vee berths & cushions

Engine 2



Head



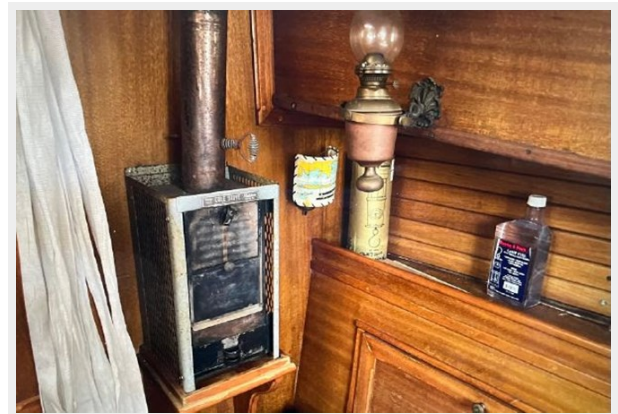
Settee/berths in main cabin



Forward bulkhead, dining table & cabin heater



Cabin heater



Aft cabin, galley to port, nav station to starboard

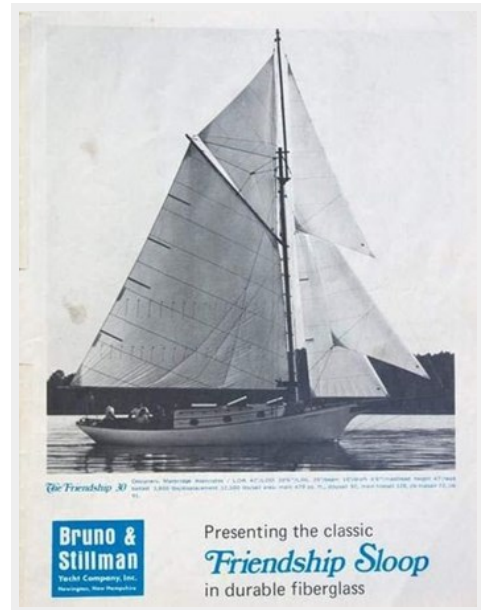


Electrical panel, gauges, & Master switch



Good Hope under sail

Galley sink, hand pump and ice box hatch



Good Hope on the mooring



CONTACTS

Andrey Shestakov, leading yacht broker of the sales department of Shestakov Yacht Sales Inc. Shestakov Yacht Sales Inc., the official representative of the Miami/Fort Lauderdale FL headquarters.

Contact details

Email: andrey@shestakovyachtsales.com

Web: shestakovyachtsales.com/en/

Telephones

USA: +1(954)274-4435

Office hours

Monday – Saturday: **9:00 - 21:00** EDT

Sunday: **closed**

Address



Harbour Towne Marina, 850 NE 3rd St,
STE 213, Dania, FL 33004