

ARGO — BUNKER & ELLIS CRUISER



Builder: BUNKER & ELLIS CRUISER

Year Built: 1960

Model: cruiser

Price: \$35,000 USD

Location: United States

LOA: 28' (8.53mm)

Beam: 8.5

Cruise Speed: 10 Knots Kts. (12 MPH)

Max Speed: 14 Knots Kts. (16 MPH)

Our experienced yacht broker, Andrey Shestakov, will help you choose and buy a yacht that best suits your needs **Argo — BUNKER & ELLIS CRUISER** from our catalogue. Presently, at Shestakov Yacht Sales Inc., we have a wide variety of yachts available on our sale's list. We also work in close contact with all the big yacht manufacturers from all over the world.

If you would like to buy a yacht **Argo — BUNKER & ELLIS CRUISER** or would like help answering any questions concerning purchasing, selling or chartering a yacht, please call **+1(954)274-4435**

TABLE OF CONTENTS

TABLE OF CONTENTS	2
SPECIFICATIONS	3
Overview	3
Basic Information	3
Dimensions	3
Speed, Capacities and Weight	3
Accommodations	3
Hull and Deck Information	4
Engine Information	4
PHOTOS	5
CONTACTS	10
Contact details	10
Telephones	10
Office hours	10
Address	10

SPECIFICATIONS

Overview

Argo, a classic Bunker & Ellis yacht is Hull No. 31, built in 1960 in Southwest Harbor, Maine. Her current owner has sailed her many summers and stores her inside during the off seasons. Originally built for the LaPage family who summered in Northeast Harbor, Argo offers two berths below, a galley area, and an enclosed head. Her wheelhouse and cockpit with varnished teak decks and sole accommodate seating for several. She is a very attractive traditional Maine yacht that is a seaworthy and fine ride!

Basic Information

Category: cruiser

Sub Category: Downeast

Model Year: 1960

Year Built: 1960

Country: United States

Dimensions

LOA: 28' (8.53mm)

Beam: 8.5

Speed, Capacities and Weight

Cruise Speed: 10 Knots Kts. (12 MPH)

Max Speed: 14 Knots Kts. (16 MPH)

Water Capacity: 10 Gallons

Holding Tank: 12 Gal Gallons

Fuel Capacity: 50 Gal Gallons

Accommodations

Total Heads: 1

Hull and Deck Information

Hull Material: Wood

Engine Information

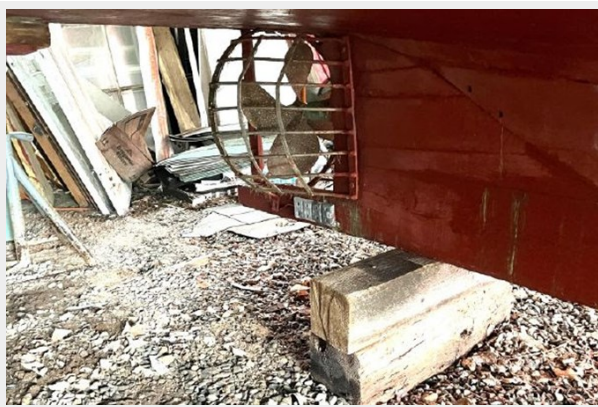
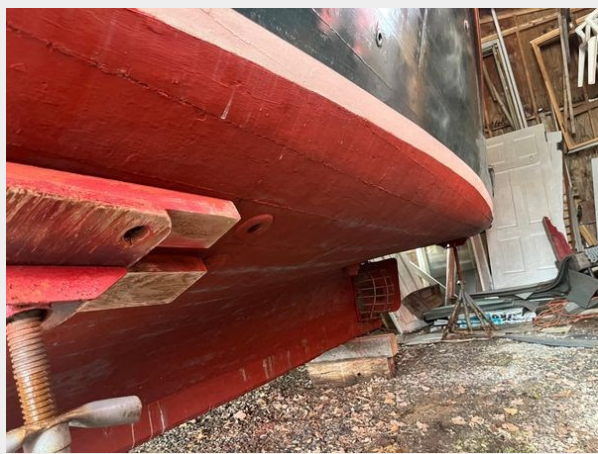
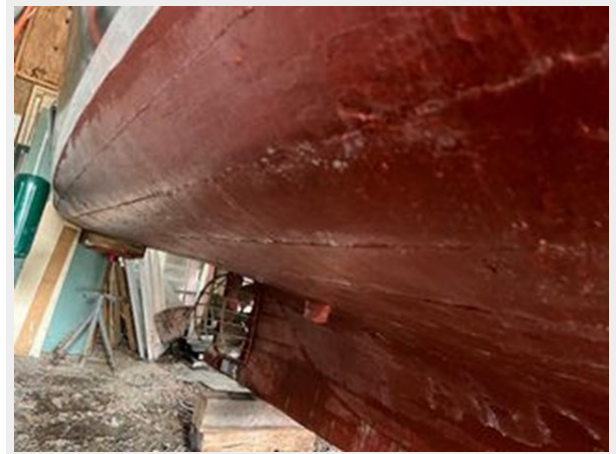
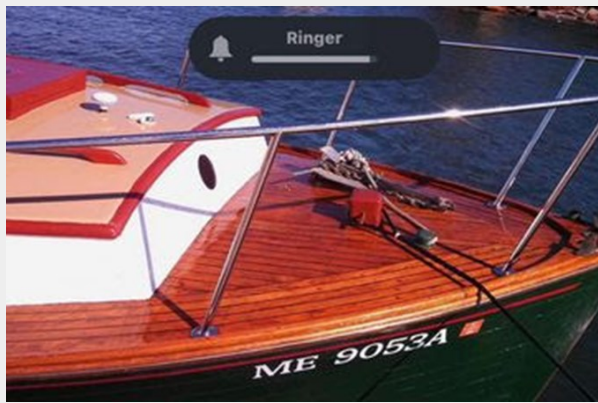
Engines: 1

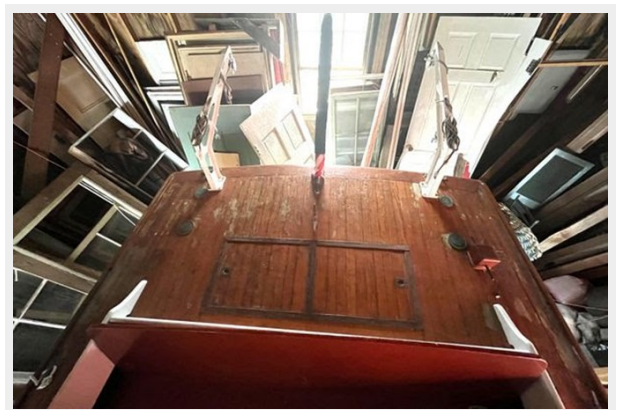
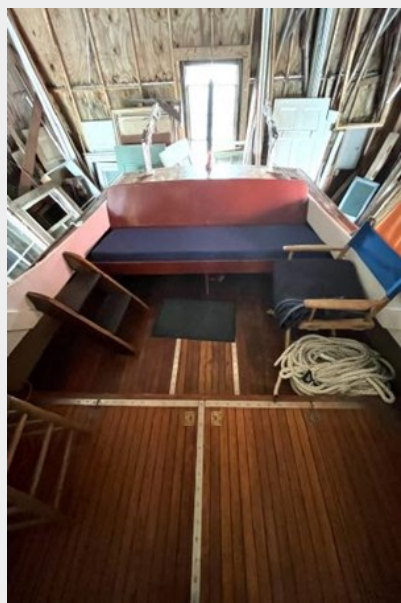
Manufacturer: Chevy

Engine Type: Inboard

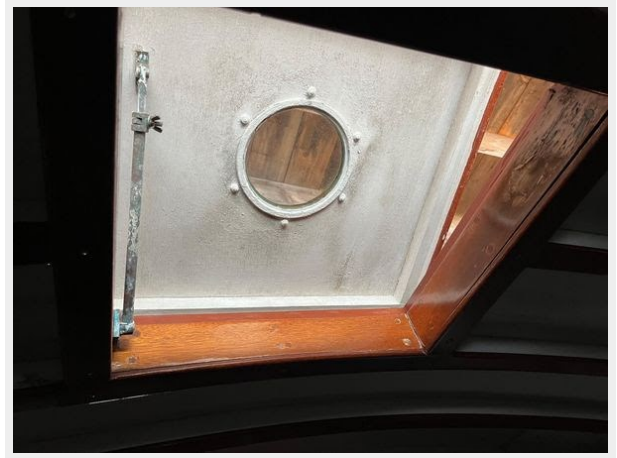
Fuel Type: Gas

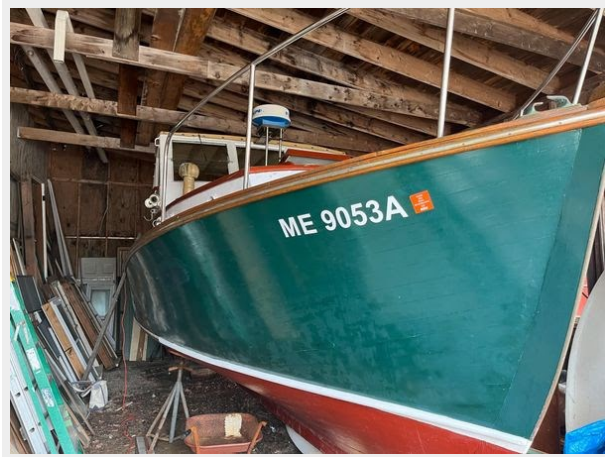
PHOTOS











CONTACTS

Andrey Shestakov, leading yacht broker of the sales department of Shestakov Yacht Sales Inc. Shestakov Yacht Sales Inc., the official representative of the Miami/Fort Lauderdale FL headquarters.

Contact details

Email: andrey@shestakovyachtsales.com

Web: shestakovyachtsales.com/en/

Telephones

USA: +1(954)274-4435

Office hours

Monday – Saturday: **9:00 - 21:00** EDT

Sunday: **closed**

Address



Harbour Towne Marina, 850 NE 3rd St,
STE 213, Dania, FL 33004