

# 1988 CAPE DORY FLYBRIDGE CRUISER — CAPE DORY



**Builder:** CAPE DORY

**Year Built:** 1988

**Model:** cruiser

**Price:** \$44,500 USD

**Location:** United States

**LOA:** 27' 11" (8.51mm)

**Beam:** 9.91

**Max Draft:** 2' 11" (0.89mm)

**Cruise Speed:** 8 Knots Kts. (9 MPH)

**Max Speed:** 15 Knots Kts. (17 MPH)

Our experienced yacht broker, Andrey Shestakov, will help you choose and buy a yacht that best suits your needs 1988 Cape Dory Flybridge Cruiser — CAPE DORY from our catalogue. Presently, at Shestakov Yacht Sales Inc., we have a wide variety of yachts available on our sale's list. We also work in close contact with all the big yacht manufacturers from all over the world.

If you would like to buy a yacht 1988 Cape Dory Flybridge Cruiser — CAPE DORY or would like help answering any questions concerning purchasing, selling or chartering a yacht, please call +1(954)274-4435

---

# TABLE OF CONTENTS

---

TABLE OF CONTENTS	2
SPECIFICATIONS	3
Overview	3
Basic Information	3
Dimensions	3
Speed, Capacities and Weight	3
Accommodations	4
Hull and Deck Information	4
Engine Information	4
PHOTOS	5
CONTACTS	10
Contact details	10
Telephones	10
Office hours	10
Address	10

---

# SPECIFICATIONS

---

## Overview

---

Voyager is a 28' Cape Dory Flybridge Cruiser that offers two helm stations and a traditional well-planned layout for cruising, picnicking, and seeing the sights with confidence and comfort. Her fiberglass hull and deck assembly give the owner ease of maintenance, and the exterior teak trim is recently finished with Cetol. Her interior woodwork is varnished teak, also recent, with accommodations for two below and two in the wheelhouse. She goes through the water well with her semi displacement hull and updated diesel engine. Cape Dory built 223 of these 28' powerboats between 1984 - 1990. She is a proven seaworthy vessel with a traditional yacht finish.

## Basic Information

---

**Category:** cruiser

**Sub Category:** Downeast

**Model Year:** 1988

**Year Built:** 1988

**Country:** United States

## Dimensions

---

**LOA:** 27' 11" (8.51mm)

**Beam:** 9.91

**Max Draft:** 2' 11" (0.89mm)

## Speed, Capacities and Weight

---

**Cruise Speed:** 8 Knots Kts. (9 MPH)

**Max Speed:** 15 Knots Kts. (17 MPH)

**Water Capacity:** 45 Gallons

**Holding Tank:** 24 Gal Gallons

**Fuel Capacity:** 120 Gal Gallons

---

## Accommodations

---

**Total Heads:** 1

---

## Hull and Deck Information

---

**Hull Material:** Fiberglass

---

## Engine Information

---

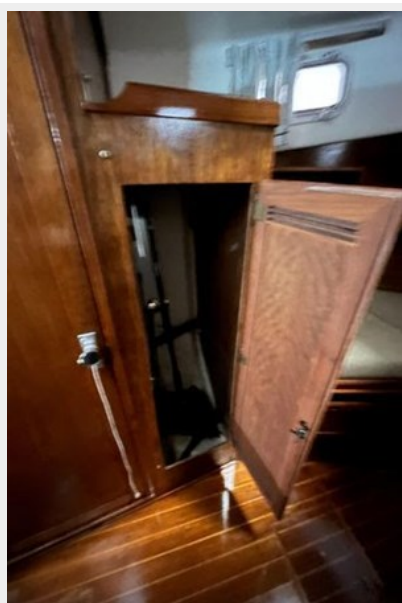
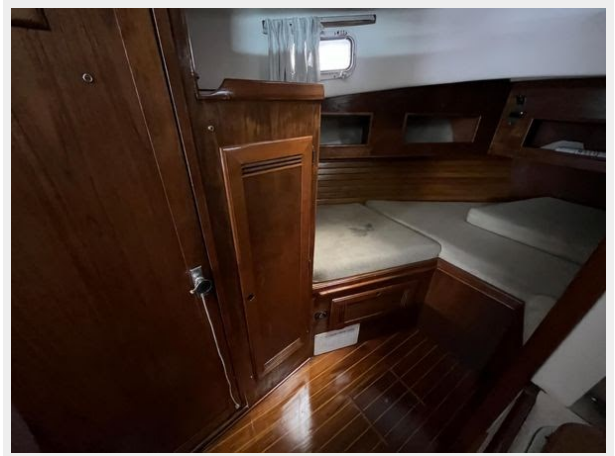
**Engines:** 1

**Manufacturer:** Yanmar

**Engine Type:** Inboard

**Fuel Type:** Diesel

# PHOTOS













**NEW POWER CRUISER**

CAPE DORY TRAWLER 28

A rugged, quality built, semi-displacement cruiser that will cut thru offshore chop at 12 to 14 knots. She's powered with a smooth, quiet, 100 h.p., 6 cylinder diesel. Perfect for coastal cruising and sport fishing. The CDT28 is built by the New England craftsmen of Cape Dory Yachts who have retained the classic good looks of a dowseast lobster boat hull. She has a full keel for solid, stable sea handling qualities and safe, comfortable family cruising.

Her spacious interior makes weekending or extended cruising a pleasure. The CDT28 has a comfortable V-berth, complete galley and enclosed head below. A large dinette in the deckhouse converts into a double berth to sleep 4 in comfort and privacy on the CDT28. Call 617-523-6776 for details.

**CAPE DORY TRAWLER/28**

**CAPE DORY TRAWLER /28**

**Standard Equipment**

**HULL AND DECK**  
 Solid hand teak top hull  
 One piece fiberglass cockpit  
 Baked enamel floor, gun deck and cabin sole  
 Corrosion resistant stainless steel beams  
 Molded in wing for directional stability  
 Teak deck, teak and rubber floor  
 Teak gun deck and cockpit  
 Flaring in rigging at 2  
 2 Bow seats with backrest  
 2 Bow seats with backrest  
 2 Bow seats with backrest  
 2 Bow seats with backrest  
 2 Bow seats with backrest

**MECHANICAL**  
 100 hp, 6 Cyl. Fresh water cooled diesel engine  
 12 volt DC, Clubfoot panel w/ 10 fuses  
 Integrated bonding of underwater hardware  
 U.S.C.C. approved navigation lights  
 Anchor light  
 Angle reflector lighting in wheel house and cabin  
 Electric windshield wiper  
 Full battery power surge protector  
 Sparan Battery, U.S. 12 volt, 35 amp  
 Solenoid selector on all under water thru hulls  
 40 gal. water tank with 100 lbs. manual water pump in head compartment  
 100 gal. fuel tank with manual fuel pump in head compartment  
 100 gal. fuel tank with manual fuel pump in head compartment

**ELECTRICAL**  
 Two 100 amp marine batteries  
 Dual point battery boxes  
 Dual battery remote switch  
 12 volt DC, Clubfoot panel w/ 10 fuses  
 Integrated bonding of underwater hardware  
 U.S.C.C. approved navigation lights  
 Anchor light  
 Angle reflector lighting in wheel house and cabin  
 Electric windshield wiper  
 Full battery power surge protector  
 Sparan Battery, U.S. 12 volt, 35 amp  
 Solenoid selector on all under water thru hulls  
 40 gal. water tank with 100 lbs. manual water pump in head compartment  
 100 gal. fuel tank with manual fuel pump in head compartment  
 100 gal. fuel tank with manual fuel pump in head compartment

**ENCLOSURE**  
 Fully enclosed headhouse  
 Complete conversion to double berth  
 Teak and hull side w/ flush engine hatch  
 Adjustable trimmer seat with vinyl and canvas  
 2 bow engine cushions  
 Full 2 berth V-berth  
 2 berth engine cushions  
 2 berth engine cushions  
 2 berth engine cushions  
 2 berth engine cushions

**Specifications**

LOD.....27'11"  
 LWL.....25'11"  
 Beam.....9'11"  
 Draft.....2'11"  
 Disp.....7,500 lbs. Approx.

**CAPE DORY TRAWLERS**

160 Middleboro Ave.  
 East Taunton  
 MA 02178



# CONTACTS

---

Andrey Shestakov, leading yacht broker of the sales department of Shestakov Yacht Sales Inc. Shestakov Yacht Sales Inc., the official representative of the Miami/Fort Lauderdale FL headquarters.

## Contact details

---

Email: [andrey@shestakovyachtsales.com](mailto:andrey@shestakovyachtsales.com)

Web: [shestakovyachtsales.com/en/](http://shestakovyachtsales.com/en/)

## Telephones

---

USA: +1(954)274-4435

## Office hours

---

Monday – Saturday: **9:00 - 21:00** EDT

Sunday: **closed**

## Address

---



Harbour Towne Marina, 850 NE 3rd St,  
STE 213, Dania, FL 33004