

## OMEGA — CUSTOM BUILT



**Builder:** CUSTOM BUILT

**Year Built:** 1991

**Model:** cruiser

**Price:** \$79,900 USD

**Location:** United States

**LOA:** 42' (12.8mm)

**Beam:** 13.66

**Max Draft:** 4' 6" (1.37mm)

**Cruise Speed:** 12 Knots Kts. (14 MPH)

**Max Speed:** 17 Knots Kts. (20 MPH)

Our experienced yacht broker, Andrey Shestakov, will help you choose and buy a yacht that best suits your needs **Omega — CUSTOM BUILT** from our catalogue. Presently, at Shestakov Yacht Sales Inc., we have a wide variety of yachts available on our sale's list. We also work in close contact with all the big yacht manufacturers from all over the world.

If you would like to buy a yacht **Omega — CUSTOM BUILT** or would like help answering any questions concerning purchasing, selling or chartering a yacht, please call **+1(954)274-4435**

---

# TABLE OF CONTENTS

---

TABLE OF CONTENTS	2
SPECIFICATIONS	3
Overview	3
Basic Information	3
Dimensions	3
Speed, Capacities and Weight	3
Accommodations	4
Hull and Deck Information	4
Engine Information	4
PHOTOS	5
CONTACTS	10
Contact details	10
Telephones	10
Office hours	10
Address	10

---

# SPECIFICATIONS

---

## Overview

---

Built by Robert C. Rich of the Bass Harbor Boat Company in 1991, Omega is a traditionally built Maine power boat designed and built by a professional builder. She is a seaworthy vessel with sleeping accommodations for six with a full galley and enclosed head. Her enclosed wheelhouse has all-around visibility and is light with surround opening windows for seeing the sights out of the weather, and a settee/single berth. Her aft cockpit offers seating for fresh air views, fishing, swimming, or dockside entertaining. If you are in the market for a stable ride that goes well through the water in a nice-looking Downeast vessel, Omega is one you should see!

## Basic Information

---

**Category:** cruiser

**Sub Category:** Downeast

**Model Year:** 1991

**Year Built:** 1991

**Country:** United States

## Dimensions

---

**LOA:** 42' (12.8mm)

**LWL:** 40' (12.19mm)

**Beam:** 13.66

**Max Draft:** 4' 6" (1.37mm)

## Speed, Capacities and Weight

---

**Cruise Speed:** 12 Knots Kts. (14 MPH)

**Max Speed:** 17 Knots Kts. (20 MPH)

**Water Capacity:** 80 Gallons

**Holding Tank:** 6 Gal Gallons

**Fuel Capacity:** 250 Gal Gallons

---

## Accommodations

---

**Total Cabins:** 3

**Sleeps:** 6

**Total Heads:** 1

---

## Hull and Deck Information

---

**Hull Material:** Wood

---

## Engine Information

---

**Engines:** 1

**Manufacturer:** Caterpillar

**Engine Type:** Inboard

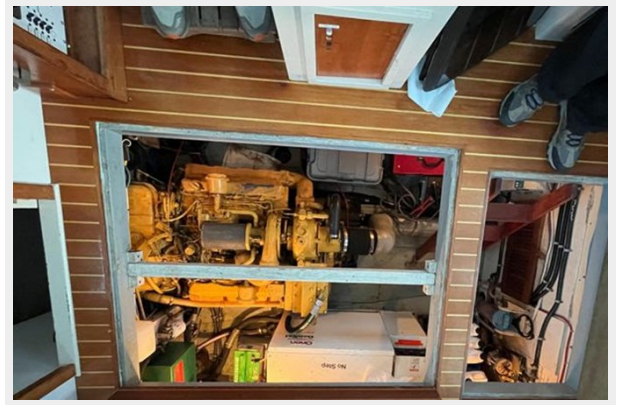
**Fuel Type:** Diesel

# PHOTOS













# CONTACTS

---

Andrey Shestakov, leading yacht broker of the sales department of Shestakov Yacht Sales Inc. Shestakov Yacht Sales Inc., the official representative of the Miami/Fort Lauderdale FL headquarters.

## Contact details

---

Email: [andrey@shestakovyachtsales.com](mailto:andrey@shestakovyachtsales.com)

Web: [shestakovyachtsales.com/en/](http://shestakovyachtsales.com/en/)

## Telephones

---

USA: +1(954)274-4435

## Office hours

---

Monday – Saturday: **9:00 - 21:00** EDT

Sunday: **closed**

## Address

---



Harbour Towne Marina, 850 NE 3rd St,  
STE 213, Dania, FL 33004