

## FIRST 405 — BENETEAU



**Builder:** BENETEAU

**Year Built:** 1986

**Model:** Sloop

**Price:** PRICE ON APPLICATION

**Location:** United States

**LOA:** 40' 8" (12.4mm)

**Beam:** 12.75

**Min Draft:** 5' 5" (1.65mm)

Our experienced yacht broker, Andrey Shestakov, will help you choose and buy a yacht that best suits your needs **First 405 — BENETEAU** from our catalogue. Presently, at Shestakov Yacht Sales Inc., we have a wide variety of yachts available on our sale's list. We also work in close contact with all the big yacht manufacturers from all over the world.

If you would like to buy a yacht **First 405 — BENETEAU** or would like help answering any questions concerning purchasing, selling or chartering a yacht, please call **+1(954)274-4435**

# TABLE OF CONTENTS

TABLE OF CONTENTS	2
SPECIFICATIONS	5
Overview	5
Basic Information	5
Dimensions	5
Speed, Capacities and Weight	5
Accommodations	5
Hull and Deck Information	6
Engine Information	6
PHOTOS	7
2	7
3	7
4	7
5	7
6	7
7	7
8	8
9	8
10	8
11	8
12	8
13	8
14	9
15	9
16	9
17	9
18	9
19	9

20	10
21	10
22	10
23	10
24	10
25	10
26	11
27	11
28	11
29	11
30	11
31	11
32	12
33	12
34	12
35	12
36	12
37	12
38	13
39	13
40	13
41	13
42	13
43	13
44	14
45	14
46	14
47	14
<b>CONTACTS</b>	<b>15</b>

---

Contact details	15
Telephones	15
Office hours	15
Address	15

---

# SPECIFICATIONS

---

## Overview

---

This Beneteau First 405 offers a 2 State Room 2 Head Layout with a Spacious Cabin that sleeps 7. There is also Full Galley. She is powered by a reliable 2001 Year Model Yamar Diesel.

The First 405 was designed as a racer/cruiser. This model could be used as a comfortable and stable cruiser capable of long trips, or even a live aboard.

**Please check the FULL SPECS for more details, and give us a call for more information, and to schedule an appointment to have a look for yourself!**

## Basic Information

---

**Category:** Sloop

**Model Year:** 1986

**Year Built:** 1986

**Country:** United States

## Dimensions

---

**LOA:** 40' 8" (12.4mm)

**Beam:** 12.75

**Min Draft:** 5' 5" (1.65mm)

## Speed, Capacities and Weight

---

**Water Capacity:** 32 Gallons

**Holding Tank:** 20 Gal Gallons

**Fuel Capacity:** 35 Gal Gallons

## Accommodations

---

**Total Cabins:** 2

**Total Heads:** 2

---

## Hull and Deck Information

---

**Hull Material:** Fiberglass

## Engine Information

---

**Engines:** 1

**Manufacturer:** Yanmar

**Engine Type:** Inboard

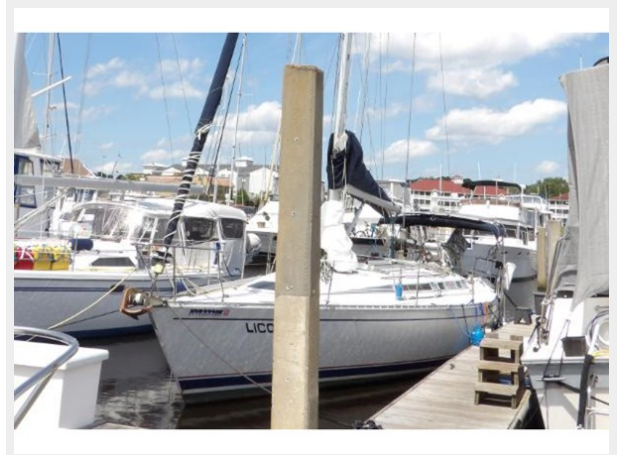
**Fuel Type:** Diesel

# PHOTOS

2



3



4



5



6



7



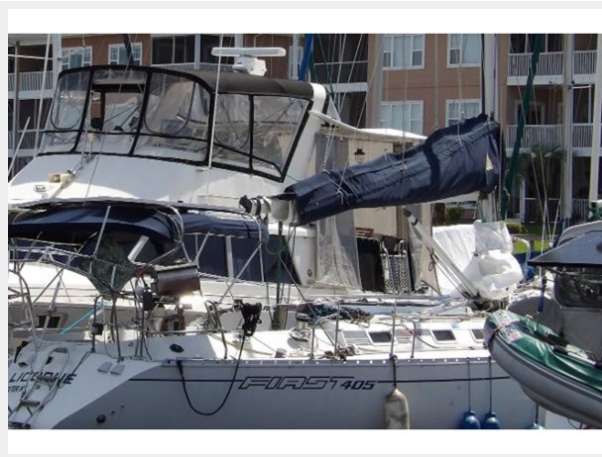
8



9



10



11



12



13





14



15



16



17



18



19



20



21



22



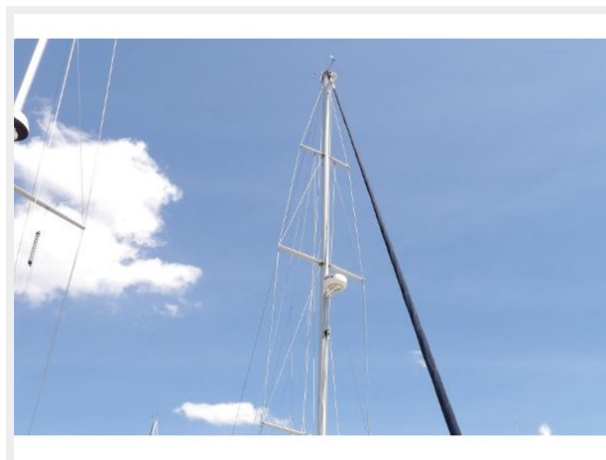
23



24



25



26



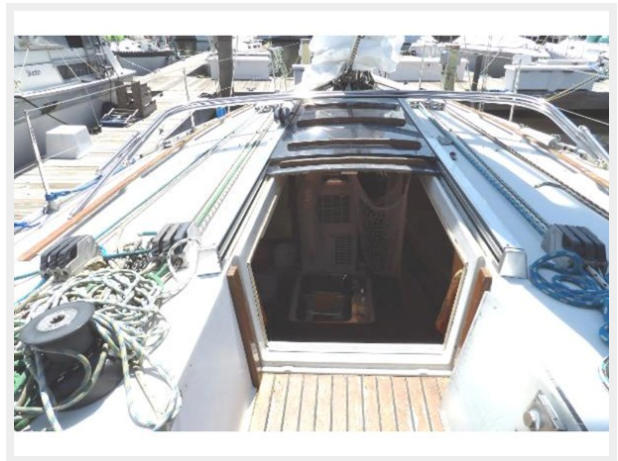
27



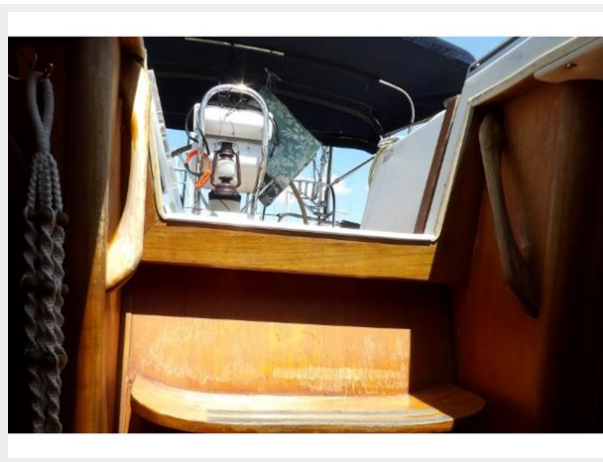
28



29



30



31



32



33



34



35



36



37



38



39



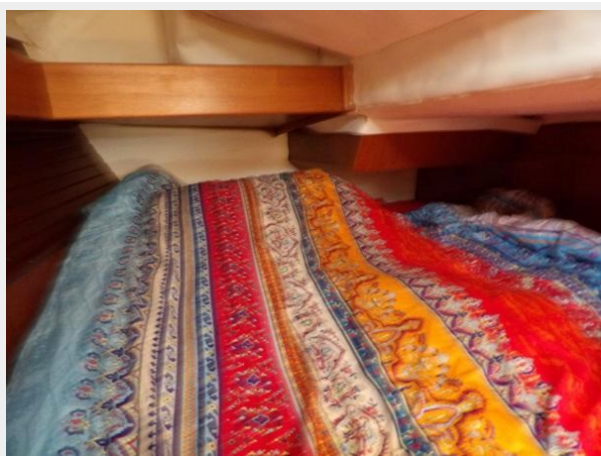
40



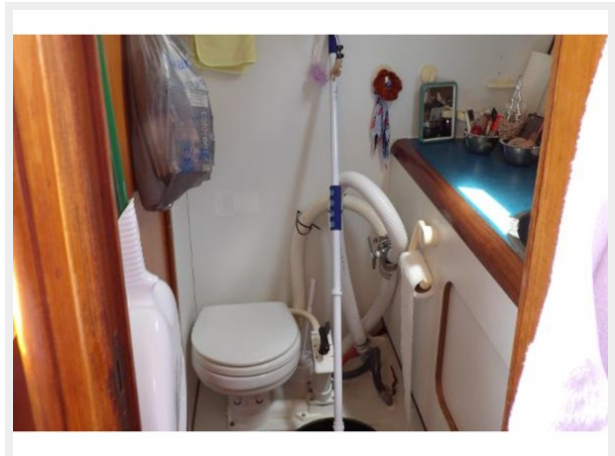
41



42



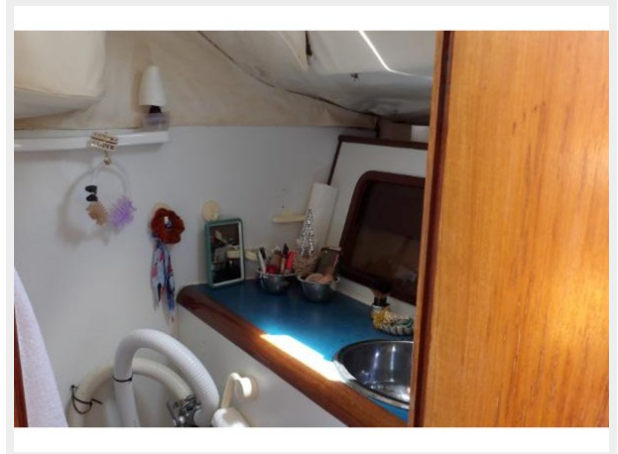
43



44



45



46



47



# CONTACTS

---

Andrey Shestakov, leading yacht broker of the sales department of Shestakov Yacht Sales Inc. Shestakov Yacht Sales Inc., the official representative of the Miami/Fort Lauderdale FL headquarters.

## Contact details

---

Email: [andrey@shestakovyachtsales.com](mailto:andrey@shestakovyachtsales.com)

Web: [shestakovyachtsales.com/en/](http://shestakovyachtsales.com/en/)

## Telephones

---

USA: +1(954)274-4435

## Office hours

---

Monday – Saturday: **9:00 - 21:00** EDT

Sunday: **closed**

## Address

---



Harbour Towne Marina, 850 NE 3rd St,  
STE 213, Dania, FL 33004