

OFF THE CUFF — SCOUT BOATS



Builder: SCOUT BOATS

Year Built: 2017

Model: Dual Console

Price: PRICE ON APPLICATION

Location: United States

LOA: 27' 6" (8.38mm)

Beam: 9

Min Draft: 1' 4" (0.41mm)

Cruise Speed: 26.07 Knots Kts. (30 MPH)

Max Speed: 43.45 Knots Kts. (50 MPH)

Our experienced yacht broker, Andrey Shestakov, will help you choose and buy a yacht that best suits your needs off the cuff — SCOUT BOATS from our catalogue. Presently, at Shestakov Yacht Sales Inc., we have a wide variety of yachts available on our sale's list. We also work in close contact with all the big yacht manufacturers from all over the world.

If you would like to buy a yacht off the cuff — SCOUT BOATS or would like help answering any questions concerning purchasing, selling or chartering a yacht, please call +1(954)274-4435

TABLE OF CONTENTS

| | |
|------------------------------|----|
| TABLE OF CONTENTS | 2 |
| SPECIFICATIONS | 5 |
| Overview | 5 |
| Basic Information | 5 |
| Dimensions | 5 |
| Speed, Capacities and Weight | 5 |
| Hull and Deck Information | 5 |
| Engine Information | 6 |
| PHOTOS | 7 |
| IMG_0982 | 7 |
| IMG_1013 | 7 |
| IMG_0998 | 7 |
| IMG_0996 | 7 |
| IMG_0994 | 7 |
| IMG_0993 | 7 |
| IMG_0992 | 8 |
| IMG_0991 | 8 |
| IMG_0990 | 8 |
| IMG_0989 | 8 |
| IMG_0988 | 9 |
| IMG_0986 | 9 |
| IMG_0985 | 9 |
| IMG_0983 | 9 |
| IMG_1030 | 10 |
| IMG_1036 | 10 |
| IMG_1034 | 10 |
| IMG_1172 | 10 |
| IMG_1174 | 11 |

| | |
|--------------------------------|----|
| IMG_1173 | 11 |
| IMG_1175 | 11 |
| IMG_7433 | 11 |
| IMG_7432 | 12 |
| IMG_7431 | 12 |
| IMG_7430 | 12 |
| IMG_7429 | 12 |
| IMG_7428 | 13 |
| IMG_7427 | 13 |
| IMG_7426 | 13 |
| IMG_7425 forward cooler | 13 |
| IMG_7424 forward table | 14 |
| IMG_7423 helm speakers | 14 |
| IMG_7419sink and cutting board | 14 |
| IMG_7452 | 14 |
| IMG_7458 | 15 |
| IMG_7457 | 15 |
| IMG_7456 | 15 |
| IMG_7455 | 15 |
| IMG_7454 | 16 |
| IMG_7453 | 16 |
| IMG_7452 | 16 |
| IMG_7458 | 16 |
| IMG_7457 | 17 |
| IMG_7456 | 17 |
| IMG_7454 | 17 |
| IMG_7453 | 17 |
| CONTACTS | 18 |
| Contact details | 18 |

| | |
|--------------|----|
| Telephones | 18 |
| Office hours | 18 |
| Address | 18 |

SPECIFICATIONS

Overview

N/A

Basic Information

Category: Dual Console

Sub Category: Dual Console

Model Year: 2018

Year Built: 2017

Country: United States

Dimensions

LOA: 27' 6" (8.38mm)

Beam: 9

Min Draft: 1' 4" (0.41mm)

Speed, Capacities and Weight

Cruise Speed: 26.07 Knots Kts. (30 MPH)

Max Speed: 43.45 Knots Kts. (50 MPH)

Water Capacity: 14 Gallons

Holding Tank: 9 Gal Gallons

Fuel Capacity: 163 Gal Gallons

Hull and Deck Information

Hull Material: Composite Fiberglass

Deck Material: Composite Fiberglass

Hull Color: Aristo blue

Engine Information

Engines: 2

Manufacturer: Yamaha

Engine Type: Outboard

Fuel Type: Gas

PHOTOS

IMG_0982



IMG_1013



IMG_0998



IMG_0996



IMG_0994



IMG_0993



IMG_0992



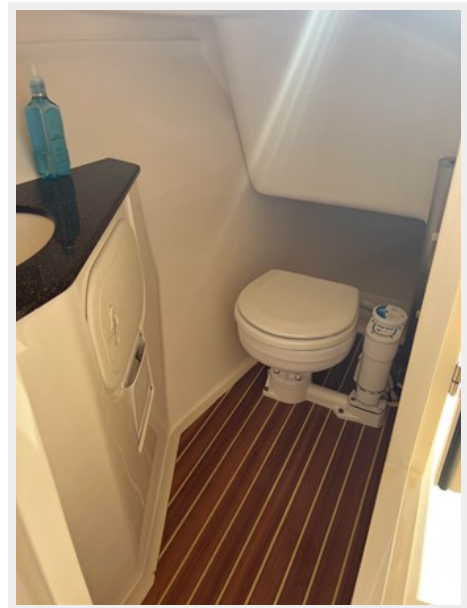
IMG_0991



IMG_0990



IMG_0989



IMG_0988



IMG_0986



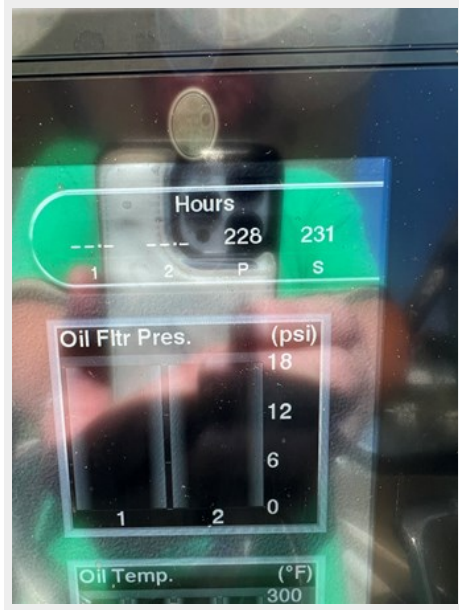
IMG_0985



IMG_0983



IMG_1030



IMG_1036



IMG_1034



IMG_1172



IMG_1173



IMG_1174



IMG_1175



IMG_7433



IMG_7432



IMG_7431



IMG_7430



IMG_7429



IMG_7428



IMG_7427



IMG_7426



IMG_7425 forward cooler



IMG_7424 forward table



IMG_7423 helm speakers



IMG_7419 sink and cutting board



IMG_7452



IMG_7458



IMG_7457



IMG_7456



IMG_7455



IMG_7454



IMG_7453



IMG_7452



IMG_7458



IMG_7457



IMG_7456



IMG_7454



IMG_7453



CONTACTS

Andrey Shestakov, leading yacht broker of the sales department of Shestakov Yacht Sales Inc. Shestakov Yacht Sales Inc., the official representative of the Miami/Fort Lauderdale FL headquarters.

Contact details

Email: andrey@shestakovyachtsales.com

Web: shestakovyachtsales.com/en/

Telephones

USA: +1(954)274-4435

Office hours

Monday – Saturday: **9:00 - 21:00** EDT

Sunday: **closed**

Address



Harbour Towne Marina, 850 NE 3rd St,
STE 213, Dania, FL 33004