

PISCES — SPENCER YACHTS



Builder: SPENCER YACHTS

Year Built: 2010

Model: Sport Fisherman

Price: \$1,650,000 USD

Location: United States

LOA: 49' (14.94mm)

Beam: 16.5

Min Draft: 4' 3" (1.3mm)

Cruise Speed: 30 Knots Kts. (35 MPH)

Max Speed: 34 Knots Kts. (39 MPH)

Our experienced yacht broker, Andrey Shestakov, will help you choose and buy a yacht that best suits your needs **PISCES — SPENCER YACHTS** from our catalogue. Presently, at Shestakov Yacht Sales Inc., we have a wide variety of yachts available on our sale's list. We also work in close contact with all the big yacht manufacturers from all over the world.

If you would like to buy a yacht **PISCES — SPENCER YACHTS** or would like help answering any questions concerning purchasing, selling or chartering a yacht, please call **+1(954)274-4435**

TABLE OF CONTENTS

TABLE OF CONTENTS	2
SPECIFICATIONS	5
Basic Information	5
Dimensions	5
Speed, Capacities and Weight	5
Accommodations	5
Hull and Deck Information	5
Engine Information	5
PHOTOS	6
Cockpit View from Tower	6
Bow View from Tower	6
Foredeck	6
Cockpit	6
Dockside View of Cockpit	6
Teak Cockpit, Fighting Chair	6
New Bridgedeck Cushions	7
At the Dock	7
New Bridgedeck Cushions	7
Comfortable Lounge	7
Helm Chairs	7
Helm	7
Overhead Dropdown Box	8
Electronics MFD Screens	8
Helm Console	8
Helm Pod	8
Electric Teaser Reels in Overhead	8
Helm Seating	8
Forward Riding Seat	9

Freezers Under Forward Seat	9
Cabin Door Slid Closed, Lounge TV's	9
Cabin Entry from Bridgedeck	9
Salon	9
Dinette	9
Salon TV	10
Galley	10
Galley Sub-Zero Drawers	10
Galley Countertop	10
Guest Stateroom Center View	10
Aft Stateroom Starboard	10
Aft Stateroom Port, Hanging Locker	11
Step Up from Aft Stateroom	11
Guest Head Vanity	11
Guest Head	11
Guest Head with Adjoining Shower Stall with Seat	11
Master Stateroom, forward	11
Master Berth	12
MSR TV and Portside Locker	12
Master Head and Shower	12
MSR Private Head Entry, Starboard Hanging Locker	12
Master Head and Vanity Top	13
Master Stateroom Berth Different Bedspread	13
Tackle Center, Grill, ER Entry and 2nd Livewell	13
Fighting Chair with Rigging Tray-Rocket Launcher Backrest	13
Underdeck Fishbox-Eskimo Ice Dump	13
Transom Livewell	13
Livewell with Lights	14
Aft Lazarette, Pod Access	14

Neat Engine Compartment	14
Starboard Motor	14
Dynamic Positioning in Action	14
D-11 Volvo Diesels	14
General Arrangement	15
Twilight Travels	15
Full cockpit Fly Cover and Transom Drape	15
Teak Transom, Chair Covered	15
Tower Lights Illuminated	15
Running	15
CONTACTS	16
Contact details	16
Telephones	16
Office hours	16
Address	16

SPECIFICATIONS

Basic Information

Category: Sport Fisherman	Model Year: 2010
Year Built: 2010	Country: United States

Dimensions

LOA: 49' (14.94mm)	Beam: 16.5
Min Draft: 4' 3" (1.3mm)	

Speed, Capacities and Weight

Cruise Speed: 30 Knots Kts. (35 MPH)	Max Speed: 34 Knots Kts. (39 MPH)
Max Speed Range: 600 Kts.	Water Capacity: 250 Gallons
Fuel Capacity: 850 Gal Gallons	

Accommodations

Total Cabins: 2	Total Heads: 2
-----------------	----------------

Hull and Deck Information

Hull Material: Composite	Hull Designer: Spencer Yachts
--------------------------	-------------------------------

Engine Information

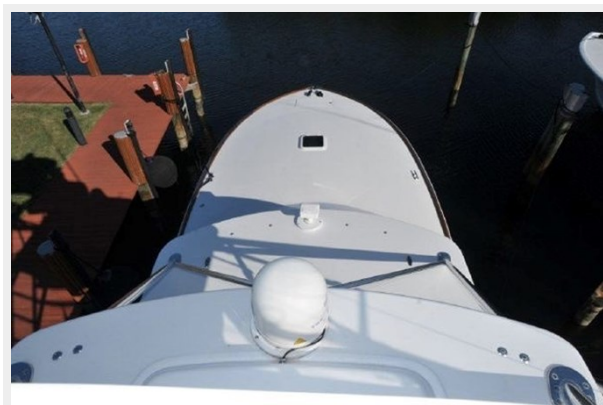
Engines: 2	Manufacturer: Volvo
Engine Type: Inboard	Fuel Type: Diesel

PHOTOS

Cockpit View from Tower



Bow View from Tower



Foredeck



Cockpit



Dockside View of Cockpit



Teak Cockpit, Fighting Chair



At the Dock



New Bridgedeck Cushions



New Bridgedeck Cushions

Comfortable Lounge



Helm Chairs



Helm



Overhead Dropdown Box



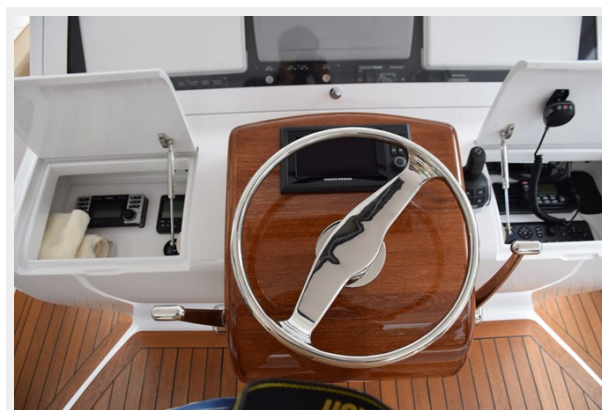
Electronics MFD Screens



Helm Console



Helm Pod



Electric Teaser Reels in Overhead



Helm Seating



Forward Riding Seat



Freezers Under Forward Seat



Cabin Door Slid Closed, Lounge TV's



Cabin Entry from Bridgedeck



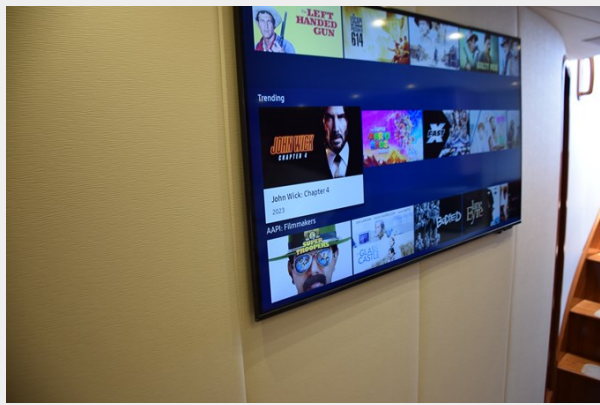
Salon



Dinette



Salon TV



Galley



Galley Sub-Zero Drawers



Galley Countertop



Guest Stateroom Center View



Aft Stateroom Starboard



Aft Stateroom Port, Hanging Locker



Step Up from Aft Stateroom



Guest Head Vanity



Guest Head



Guest Head with Adjoining Shower Stall with Seat



Master Stateroom, forward



Master Berth



MSR TV and Portside Locker



Master Head and Shower

MSR Private Head Entry, Starboard Hanging Locker



Master Head and Vanity Top



Master Stateroom Berth Different Bedsread



Tackle Center, Grill, ER Entry and 2nd Livewell



Fighting Chair with Rigging Tray-Rocket Launcher Backrest



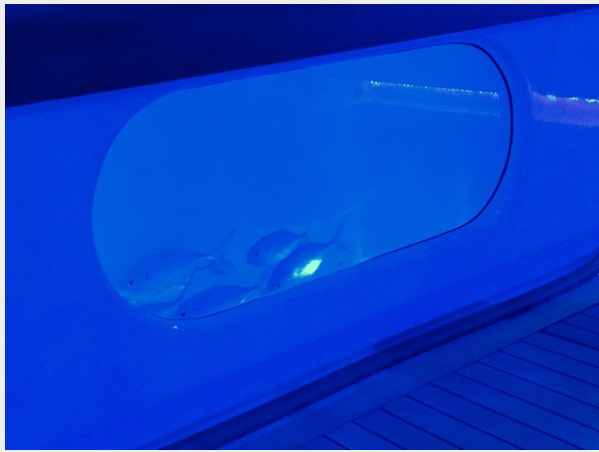
Underdeck Fishbox-Eskimo Ice Dump



Transom Livewell



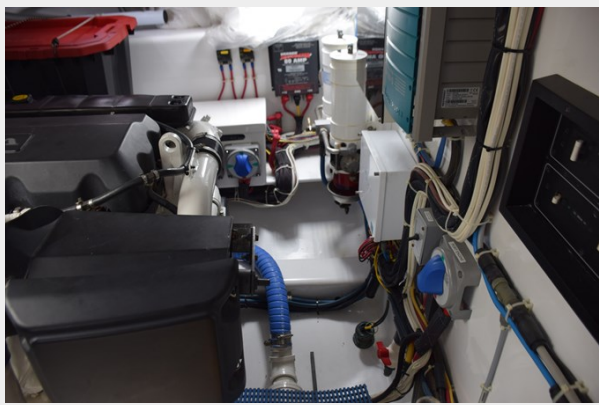
Livewell with Lights



Aft Lazarette, Pod Access



Neat Engine Compartment



Starboard Motor



D-11 Volvo Diesels



Dynamic Positioning in Action



Twilight Travels



General Arrangement



Teak Transom, Chair Covered



Full cockpit Fly Cover and Transom Drape



Tower Lights Illuminated



Running



CONTACTS

Andrey Shestakov, leading yacht broker of the sales department of Shestakov Yacht Sales Inc. Shestakov Yacht Sales Inc., the official representative of the Miami/Fort Lauderdale FL headquarters.

Contact details

Email: **andrey@shestakovyachtsales.com**

Web: shestakovyachtsales.com/en/

Telephones

USA: **+1(954)274-4435**

Office hours

Monday – Saturday: **9:00 - 21:00 EDT**

Sunday: **closed**

Address



Harbour Towne Marina, 850 NE 3rd St,
STE 213, Dania, FL 33004