

CHRISTINA — MERRITT BOAT WORKS



Builder: MERRITT BOAT WORKS

Year Built: 1997

Model: Sport Fisherman

Price: \$1,950,000 USD

Location: United States

LOA: 58' (17.68mm)

Beam: 18.41

Max Draft: 5' (1.52mm)

Cruise Speed: 27 Knots Kts. (31 MPH)

Max Speed: 33 Knots Kts. (38 MPH)

Our experienced yacht broker, Andrey Shestakov, will help you choose and buy a yacht that best suits your needs **CHRISTINA — MERRITT BOAT WORKS** from our catalogue. Presently, at Shestakov Yacht Sales Inc., we have a wide variety of yachts available on our sale's list. We also work in close contact with all the big yacht manufacturers from all over the world.

If you would like to buy a yacht **CHRISTINA — MERRITT BOAT WORKS** or would like help answering any questions concerning purchasing, selling or chartering a yacht, please call **+1(954)274-4435**

TABLE OF CONTENTS

TABLE OF CONTENTS	2
SPECIFICATIONS	5
Overview	5
Basic Information	5
Dimensions	5
Speed, Capacities and Weight	5
Accommodations	5
Hull and Deck Information	6
Engine Information	6
PHOTOS	7
DJI_0006-Enhanced-NR	7
DJI_0003-Enhanced-NR	7
DJI_0947-Enhanced-NR	7
DJI_0956-Enhanced-NR	7
DJI_0976-Enhanced-NR	7
DJI_0963-Enhanced-NR	7
Photo Aug 08 2023, 8 42 15 AM-Enhanced-SR	8
DJI_0987-Enhanced-NR	8
Photo Aug 09 2023, 8 05 39 AM-Enhanced-SR	8
Photo Aug 09 2023, 8 11 00 AM (1)-Enhanced-SR	8
Z9D_2956-Enhanced-NR	8
Photo Aug 09 2023, 8 11 50 AM-Enhanced-SR	8
Z9D_2959-Enhanced-NR	9
Z9D_2966-Enhanced-NR	9
Z9D_2968-Enhanced-NR	9
Z9D_2970-Enhanced-NR	9
Z9D_2972-Enhanced-NR	9
Z9D_2975-Enhanced-NR	9

Z9D_2976-Enhanced-NR	10
Z9D_2983-Enhanced-NR	10
Z9D_2995-Enhanced-NR	10
Z9D_3004-Enhanced-NR	10
Z9D_3008-Enhanced-NR	10
Z9D_3015-Enhanced-NR	10
Z9D_3028-Enhanced-NR	11
Z9D_3032-Enhanced-NR	11
Z9D_3037-Enhanced-NR	11
Z9D_3039-Enhanced-NR	11
Z9D_3043-Enhanced-NR	11
Z9D_3049-Enhanced-NR	11
Z9D_3061-Enhanced-NR	12
Z9D_3065-Enhanced-NR	12
Z9D_3091-Enhanced-NR	12
Z9D_3099-Enhanced-NR	12
Z9D_3113-Enhanced-NR	12
Z9D_3118-Enhanced-NR	12
Z9D_3133-Enhanced-NR	13
Z9D_3135-Enhanced-NR	13
Z9D_3141-Enhanced-NR	13
Z9D_3157-Enhanced-NR	13
Z9D_3159-Enhanced-NR	13
Z9D_3163-Enhanced-NR	13
Z9D_3174-Enhanced-NR	14
Z9D_3185-Enhanced-NR	14
Z9D_3195-Enhanced-NR	14
Z9D_3208-Enhanced-NR	14
Z9D_3211-Enhanced-NR	14

Z9D_3222-Enhanced-NR	14
Z9D_3228-Enhanced-NR	15
CONTACTS	16
Contact details	16
Telephones	16
Office hours	16
Address	16

SPECIFICATIONS

Overview

The **CHRISTINA** was originally launched in 1997 as My Lynn and has been continually updated by her current owner. She features a Jack Hopewell Tower, master stateroom forward with ensuite head and full shower, a guest stateroom to port as well as crew quarters with over/under bunks to starboard and full head. The interior is classic Merritt teak throughout with many upgrades. A new teak deck and full mezzanine with new refrigeration and dual freezers was installed in 2018. The bridge was upgraded in 2022-23 with new electronics varnish stripped and refinished. All exterior varnish was stripped and refinished in 2022 as well as full paint job at Merritt's in 2019. In 2002 both engines were rebuilt by a Caterpillar dealer with 2015 hours on them.

Basic Information

Category: Sport Fisherman

Model Year: 1997

Year Built: 1997

Country: United States

Dimensions

LOA: 58' (17.68mm)

Beam: 18.41

Max Draft: 5' (1.52mm)

Speed, Capacities and Weight

Cruise Speed: 27 Knots Kts. (31 MPH)

Max Speed: 33 Knots Kts. (38 MPH)

Water Capacity: 250 Gallons

Fuel Capacity: 1480 Gal Gallons

Accommodations

Total Cabins: 3

Hull and Deck Information

Hull Material: Fiberglass

Engine Information

Engines: 2

Manufacturer: Caterpillar

Engine Type: Inboard

Fuel Type: Diesel

PHOTOS

DJI_0003-Enhanced-NR



DJI_0006-Enhanced-NR



DJI_0947-Enhanced-NR



DJI_0956-Enhanced-NR



DJI_0963-Enhanced-NR



DJI_0976-Enhanced-NR



DJI_0987-Enhanced-NR



Photo Aug 08 2023, 8 42 15 AM-Enhanced-SR



Photo Aug 09 2023, 8 05 39 AM-Enhanced-SR



Photo Aug 09 2023, 8 11 00 AM (1)-Enhanced-SR



Photo Aug 09 2023, 8 11 50 AM-Enhanced-SR



Z9D_2956-Enhanced-NR



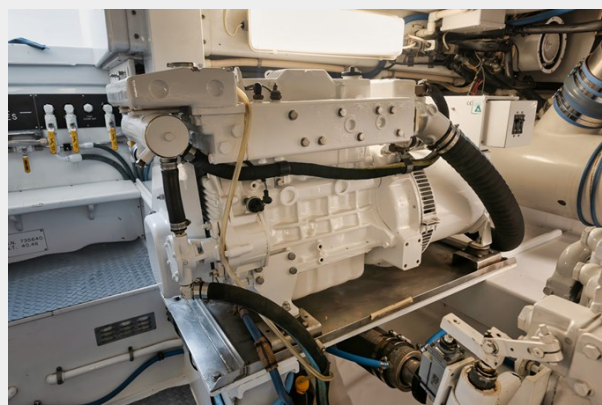
Z9D_2959-Enhanced-NR



Z9D_2966-Enhanced-NR



Z9D_2968-Enhanced-NR



Z9D_2970-Enhanced-NR



Z9D_2972-Enhanced-NR



Z9D_2975-Enhanced-NR



Z9D_2976-Enhanced-NR



Z9D_2983-Enhanced-NR



Z9D_2995-Enhanced-NR



Z9D_3004-Enhanced-NR



Z9D_3008-Enhanced-NR



Z9D_3015-Enhanced-NR



Z9D_3028-Enhanced-NR



Z9D_3032-Enhanced-NR



Z9D_3037-Enhanced-NR



Z9D_3039-Enhanced-NR



Z9D_3043-Enhanced-NR



Z9D_3049-Enhanced-NR



Z9D_3061-Enhanced-NR



Z9D_3065-Enhanced-NR



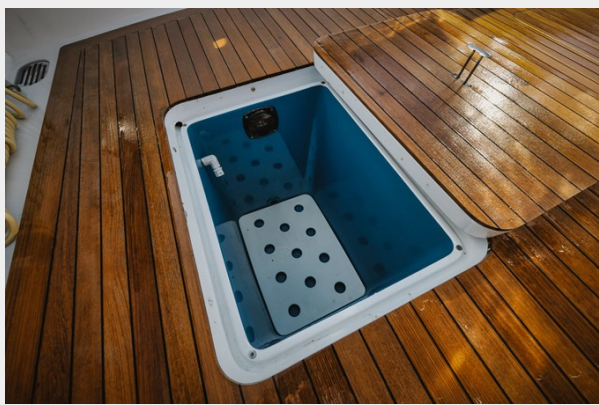
Z9D_3091-Enhanced-NR



Z9D_3099-Enhanced-NR



Z9D_3113-Enhanced-NR



Z9D_3118-Enhanced-NR



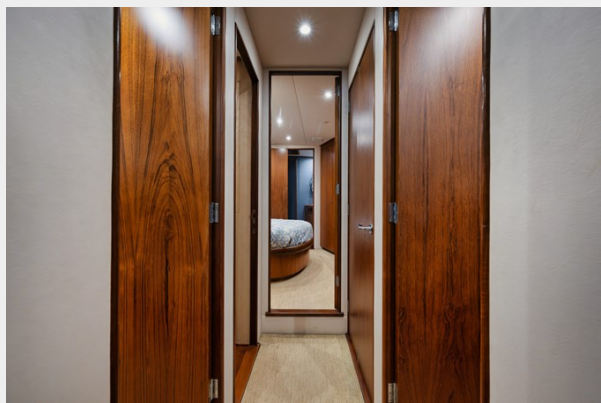
Z9D_3133-Enhanced-NR



Z9D_3135-Enhanced-NR



Z9D_3141-Enhanced-NR



Z9D_3157-Enhanced-NR



Z9D_3159-Enhanced-NR



Z9D_3163-Enhanced-NR



Z9D_3174-Enhanced-NR



Z9D_3185-Enhanced-NR



Z9D_3195-Enhanced-NR



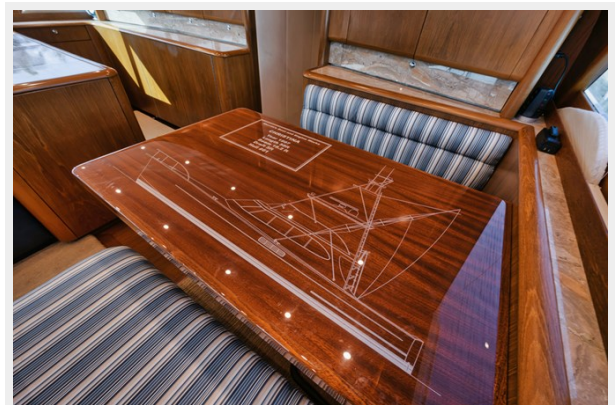
Z9D_3208-Enhanced-NR



Z9D_3211-Enhanced-NR



Z9D_3222-Enhanced-NR



Z9D_3228-Enhanced-NR



CONTACTS

Andrey Shestakov, leading yacht broker of the sales department of Shestakov Yacht Sales Inc. Shestakov Yacht Sales Inc., the official representative of the Miami/Fort Lauderdale FL headquarters.

Contact details

Email: andrey@shestakovyachtsales.com

Web: shestakovyachtsales.com/en/

Telephones

USA: +1(954)274-4435

Office hours

Monday – Saturday: **9:00 - 21:00** EDT

Sunday: **closed**

Address



Harbour Towne Marina, 850 NE 3rd St,
STE 213, Dania, FL 33004