

ASHLEY ' N LUCY — CUSTOM BUILT



Builder: CUSTOM BUILT

Year Built: 2000

Model: Lobster Boat

Price: \$59,900 USD

Location: United States

LOA: 27' 8" (8.43mm)

Beam: 10.41

Max Draft: 3' 3" (0.99mm)

Cruise Speed: 12 Knots Kts. (14 MPH)

Max Speed: 18 Knots Kts. (21 MPH)

Our experienced yacht broker, Andrey Shestakov, will help you choose and buy a yacht that best suits your needs **Ashley ' N Lucy — CUSTOM BUILT** from our catalogue. Presently, at Shestakov Yacht Sales Inc., we have a wide variety of yachts available on our sale's list. We also work in close contact with all the big yacht manufacturers from all over the world.

If you would like to buy a yacht **Ashley ' N Lucy — CUSTOM BUILT** or would like help answering any questions concerning purchasing, selling or chartering a yacht, please call **+1(954)274-4435**

TABLE OF CONTENTS

TABLE OF CONTENTS	2
SPECIFICATIONS	3
Overview	3
Basic Information	3
Dimensions	3
Speed, Capacities and Weight	3
Hull and Deck Information	3
Engine Information	4
PHOTOS	5
CONTACTS	9
Contact details	9
Telephones	9
Office hours	9
Address	9

SPECIFICATIONS

Overview

The Ashley 'N Lucy is a one-owner 28' Jason Lobster boat that was designed by Calvin Beal Jr. and built by Terry Jason in Steuben, Maine, in 2000. Her solid fiberglass hull, molded fiberglass deck assembly, mechanics, and electronics have been well maintained and upgraded. She has been run as a commercial lobster boat and tour boat for 20 years in waters off Mount Desert Island and would make a nice picnic boat to see the sights and visit islands and beaches. Her owner has maintained boat and systems well and is retiring from the trade. This well-designed and built Downeast powerboat is known for her stability and seaworthiness. A very clean and gently used boat!

Basic Information

Category: Lobster Boat

Sub Category: Lobster Boat

Model Year: 2000

Year Built: 2000

Country: United States

Dimensions

LOA: 27' 8" (8.43mm)

Beam: 10.41

Max Draft: 3' 3" (0.99mm)

Speed, Capacities and Weight

Cruise Speed: 12 Knots Kts. (14 MPH)

Max Speed: 18 Knots Kts. (21 MPH)

Hull and Deck Information

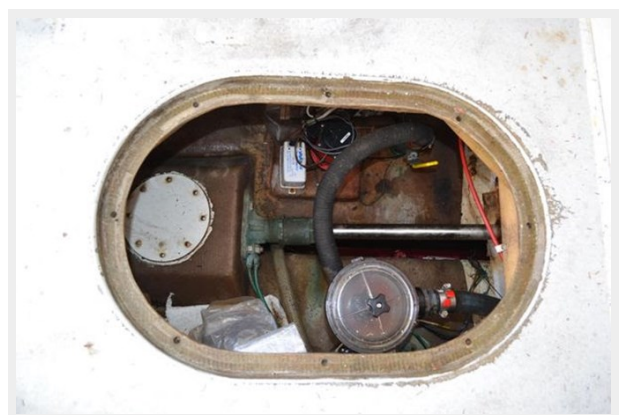
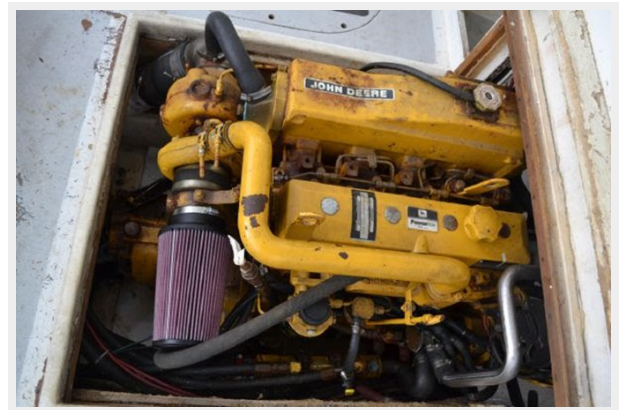
Hull Material: Fiberglass

Engine Information

Engines: 1	Manufacturer: John Deere
Engine Type: Inboard	Fuel Type: Diesel

PHOTOS









CONTACTS

Andrey Shestakov, leading yacht broker of the sales department of Shestakov Yacht Sales Inc. Shestakov Yacht Sales Inc., the official representative of the Miami/Fort Lauderdale FL headquarters.

Contact details

Email:
andrey@shestakovyachtsales.com

Web: shestakovyachtsales.com/en/

Telephones

USA: **+1(954)274-4435**

Office hours

Monday – Saturday: **9:00 - 21:00 EDT**

Sunday: **closed**

Address



Harbour Towne Marina, 850 NE 3rd St,
STE 213, Dania, FL 33004