

EGGSCAPE — EGG HARBOR



Builder: EGG HARBOR

Year Built: 1971

Model: cruiser

Price: \$150,000 USD

Location: United States

LOA: 48' (14.63mm)

Beam: 14.66

Max Draft: 3' 6" (1.07mm)

Cruise Speed: 14 Knots Kts. (16 MPH)

Max Speed: 17 Knots Kts. (20 MPH)

Our experienced yacht broker, Andrey Shestakov, will help you choose and buy a yacht that best suits your needs **Eggscape — EGG HARBOR** from our catalogue. Presently, at Shestakov Yacht Sales Inc., we have a wide variety of yachts available on our sale's list. We also work in close contact with all the big yacht manufacturers from all over the world.

If you would like to buy a yacht **Eggscape — EGG HARBOR** or would like help answering any questions concerning purchasing, selling or chartering a yacht, please call **+1(954)274-4435**

TABLE OF CONTENTS

TABLE OF CONTENTS	2
SPECIFICATIONS	3
Overview	3
Basic Information	3
Dimensions	3
Speed, Capacities and Weight	3
Accommodations	4
Hull and Deck Information	4
Engine Information	4
PHOTOS	5
CONTACTS	13
Contact details	13
Telephones	13
Office hours	13
Address	13

SPECIFICATIONS

Overview

48' Egg Harbor Flybridge Sedan Sport Cruiser For SaleEggscape is a 1971 wooden Egg Harbor Sedan Flybridge Cruiser that has been sailed, upgraded, and excellently maintained by the same owner for 25 years in the Portland area. Twin GM J&T 671s with less than 400 hours each. Owner has spared nothing to keep her in very good working order. Both upper and lower helm stations are well equipped with electronics and controls. Terrific living space with full galley below, 2 staterooms, 2 enclosed heads, and great outside space in the cockpit and flybridge, both with bimini options! This classic yacht is a step-aboard yacht ready to take out with friends and family on the water and enjoy time together, catch a few fish, and cruise in 2023!

Basic Information

Category: cruiser

Sub Category: Sport Cruiser

Model Year: 1971

Year Built: 1971

Country: United States

Dimensions

LOA: 48' (14.63mm)

LWL: 46' 3" (14.1mm)

Beam: 14.66

Max Draft: 3' 6" (1.07mm)

Speed, Capacities and Weight

Cruise Speed: 14 Knots Kts. (16 MPH)

Max Speed: 17 Knots Kts. (20 MPH)

Water Capacity: 130 Gallons

Holding Tank: 70 Gal Gallons

Fuel Capacity: 500 Gal Gallons

Accommodations

Total Heads: 2

Hull and Deck Information

Hull Material: Wood

Engine Information

Engines: 2

Manufacturer: J & T

Engine Type: Inboard

Fuel Type: Diesel

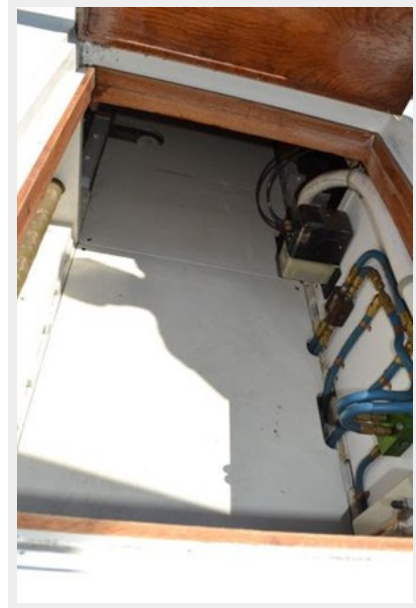
PHOTOS

















CONTACTS

Andrey Shestakov, leading yacht broker of the sales department of Shestakov Yacht Sales Inc. Shestakov Yacht Sales Inc., the official representative of the Miami/Fort Lauderdale FL headquarters.

Contact details

Email: andrey@shestakovyachtsales.com

Web: shestakovyachtsales.com/en/

Telephones

USA: +1(954)274-4435

Office hours

Monday – Saturday: **9:00 - 21:00** EDT

Sunday: **closed**

Address



Harbour Towne Marina, 850 NE 3rd St,
STE 213, Dania, FL 33004