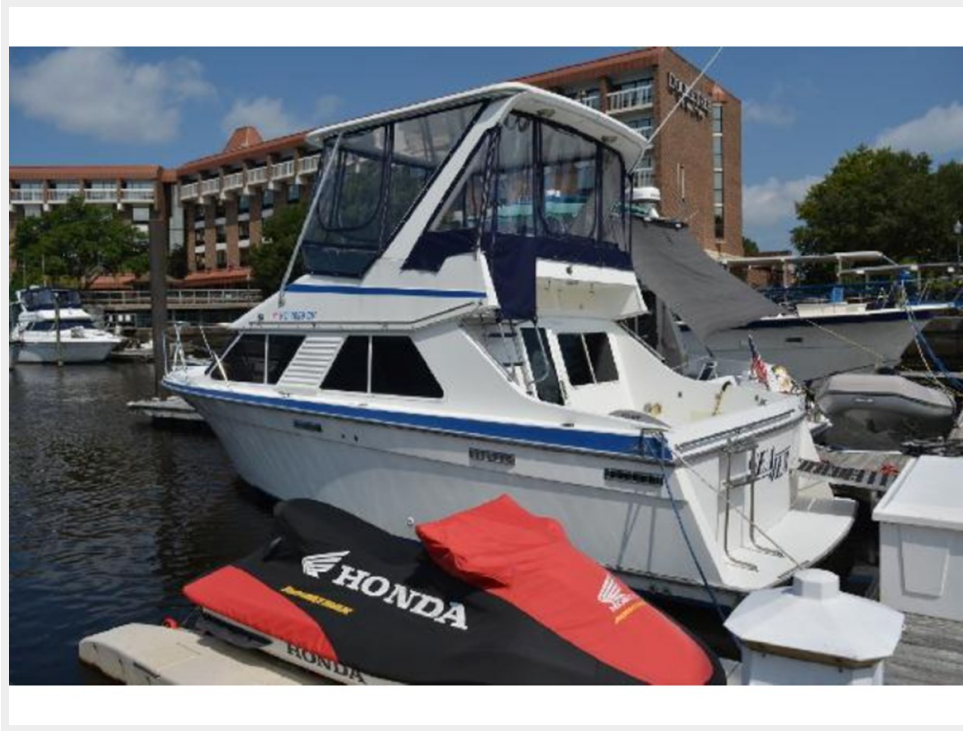


## SEA JEM — TOLLYCRAFT



**Builder:** TOLLYCRAFT

**Year Built:** 1990

**Model:** cruiser

**Price:** PRICE ON APPLICATION

**Location:** United States

**LOA:** 30' (9.14mm)

**Beam:** 11.5

**Max Draft:** 2' 7" (0.79mm)

**Cruise Speed:** 22 Knots Kts. (25 MPH)

**Max Speed:** 28 Knots Kts. (32 MPH)

Our experienced yacht broker, Andrey Shestakov, will help you choose and buy a yacht that best suits your needs Sea JEM — TOLLYCRAFT from our catalogue. Presently, at Shestakov Yacht Sales Inc., we have a wide variety of yachts available on our sale's list. We also work in close contact with all the big yacht manufacturers from all over the world.

If you would like to buy a yacht Sea JEM — TOLLYCRAFT or would like help answering any questions concerning purchasing, selling or chartering a yacht, please call +1(954)274-4435

# TABLE OF CONTENTS

TABLE OF CONTENTS	2
SPECIFICATIONS	4
Overview	4
Basic Information	4
Dimensions	4
Speed, Capacities and Weight	5
Accommodations	5
Hull and Deck Information	5
Engine Information	5
PHOTOS	6
2	6
3	6
4	6
5	6
6	6
7	6
8	7
9	7
10	7
11	7
12	7
13	7
14	8
15	8
16	8
17	8
18	8
19	8

---

20	9
21	9
22	9
23	9
24	9
25	9
26	10
27	10
28	10
29	10
30	10
31	10
32	11
33	11
34	11
35	11
CONTACTS	12
Contact details	12
Telephones	12
Office hours	12
Address	12

---

# SPECIFICATIONS

---

## Overview

---

### Spacious, Well Designed, Exceptional Quality!

The **Tollycraft 30 Sedan** is a good-looking, well built package that offers much more than the average small sedan. Design features include a spacious Galley, a large Settee and Dinette, both convertible into sleepers, a nice Forward Cabin with Privacy Doors, and an excellent Bridge Deck and Cockpit.

Powered by twin **260 HP MerCruiser 5.7 Bluewater** engines with Closed Loop Cooling and V-Drives, the boat also features a Custom Fiberglass Hardtop with a NEW Full Bridge Enclosure. She ALSO is beautifully painted with Awlgrip and shows unbelievably well! This is a Good-Looking Boat!

This Tolly Sedan offers much more than the average small sedan, if you are shopping 30-35 footers you owe it to yourself to have a look at this one before you decide!

## Basic Information

---

**Category:** cruiser

**Sub Category:** Cabin Cruiser

**Model Year:** 1990

**Year Built:** 1990

**Country:** United States

## Dimensions

---

**LOA:** 30' (9.14mm)

**Beam:** 11.5

**Max Draft:** 2' 7" (0.79mm)

---

## Speed, Capacities and Weight

---

**Cruise Speed:** 22 Knots Kts. (25 MPH)

**Max Speed:** 28 Knots Kts. (32 MPH)

**Water Capacity:** 42 Gallons

**Holding Tank:** 28 Gal Gallons

**Fuel Capacity:** 198 Gal Gallons

---

## Accommodations

---

**Total Cabins:** 1

**Total Heads:** 1

---

## Hull and Deck Information

---

**Hull Material:** Fiberglass

---

## Engine Information

---

**Engines:** 2

**Manufacturer:** Mercruiser

**Engine Type:** Inboard

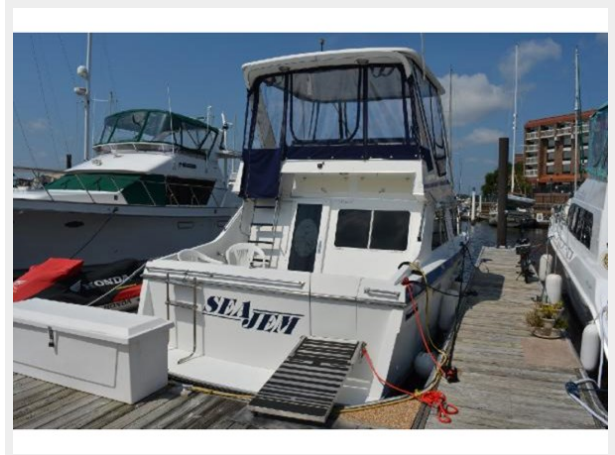
**Fuel Type:** Gas/Petrol

# PHOTOS

2



3



4



5



6



7

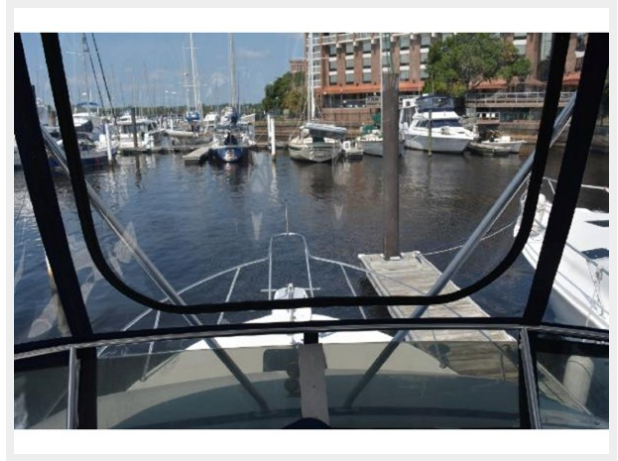




8



9



10



11



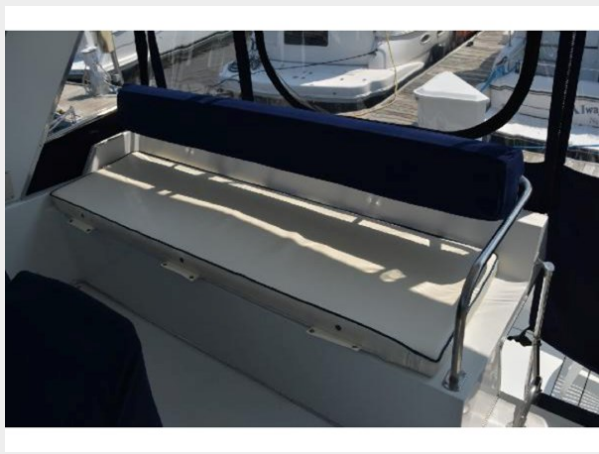
12



13



14



15



16



17



18



19





20



21



22



23



24



25



26



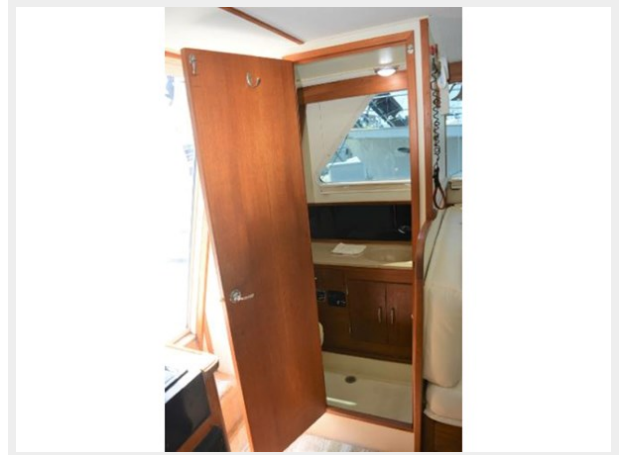
27



28



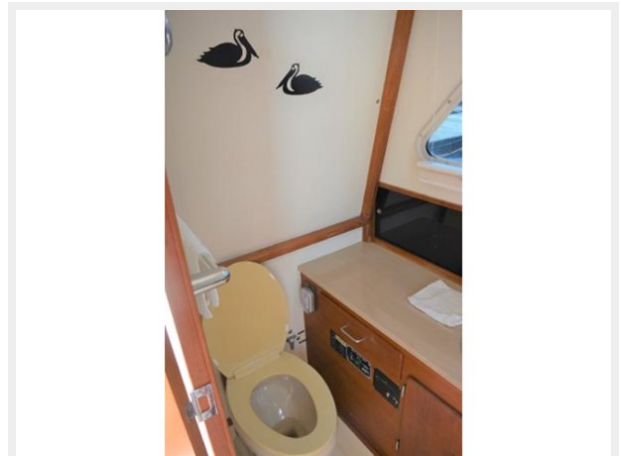
29



30



31



32



33



34



35





# CONTACTS

---

Andrey Shestakov, leading yacht broker of the sales department of Shestakov Yacht Sales Inc. Shestakov Yacht Sales Inc., the official representative of the Miami/Fort Lauderdale FL headquarters.

## Contact details

---

Email: [andrey@shestakovyachtsales.com](mailto:andrey@shestakovyachtsales.com)

Web: [shestakovyachtsales.com/en/](http://shestakovyachtsales.com/en/)

## Telephones

---

USA: +1(954)274-4435

## Office hours

---

Monday – Saturday: **9:00 - 21:00** EDT

Sunday: **closed**

## Address

---



Harbour Towne Marina, 850 NE 3rd St,  
STE 213, Dania, FL 33004