

LIBERTE — ELCO



Builder: ELCO

Year Built: 1929

Model: cruiser

Price: PRICE ON APPLICATION

Location: United States

LOA: 50' (15.24mm)

Beam: 13.33

Cruise Speed: 16 Knots Kts. (18 MPH)

Our experienced yacht broker, Andrey Shestakov, will help you choose and buy a yacht that best suits your needs **Liberte — ELCO** from our catalogue. Presently, at Shestakov Yacht Sales Inc., we have a wide variety of yachts available on our sale's list. We also work in close contact with all the big yacht manufacturers from all over the world.

If you would like to buy a yacht **Liberte — ELCO** or would like help answering any questions concerning purchasing, selling or chartering a yacht, please call **+1(954)274-4435**

TABLE OF CONTENTS

TABLE OF CONTENTS	2
SPECIFICATIONS	5
Overview	5
Basic Information	5
Dimensions	5
Speed, Capacities and Weight	5
Accommodations	5
Hull and Deck Information	5
Engine Information	6
PHOTOS	7
3	7
2	7
4	7
5	7
6	8
7	8
9	8
8	8
10	8
11	8
13	9
12	9
14	9
15	9
17	10
16	10
18	10
19	10

21	11
20	11
22	11
23	11
24	12
25	12
26	12
27	12
28	13
29	13
30	13
31	13
33	14
32	14
34	14
35	14
37	15
36	15
38	15
39	15
41	16
40	16
43	16
42	16
44	17
45	17
46	17
47	17
49	18

48	18
50	18
51	18
52	19
53	19
54	19
55	19
56	19
57	19
CONTACTS	20
Contact details	20
Telephones	20
Office hours	20
Address	20

SPECIFICATIONS

Overview

1929 50ft Elco in excellent condition now available (shed kept) with full restoration work done over the last few years on the hull, engine and power systems, water, electrical (new 110 and 12V panels), floor stringers, sanitation systems, batteries, freshwater pumps, shaft realignment main bearings on struts replaced, and generator with only 530 hours.

Basic Information

Category: cruiser

Model Year: 1929

Year Built: 1929

Country: United States

Dimensions

LOA: 50' (15.24mm)

Beam: 13.33

Speed, Capacities and Weight

Cruise Speed: 16 Knots Kts. (18 MPH)

Water Capacity: 45 Gallons

Holding Tank: 72 Gal Gallons

Fuel Capacity: 150 Gal Gallons

Accommodations

Total Berths: 7

Total Heads: 2

Hull and Deck Information

Hull Material: Wood

Engine Information

Engines: 2

Manufacturer: John Deere

Engine Type: Inboard

Fuel Type: Diesel

PHOTOS

2



3



4



5



6



7



8



9



10



11



12



13



14



15



16



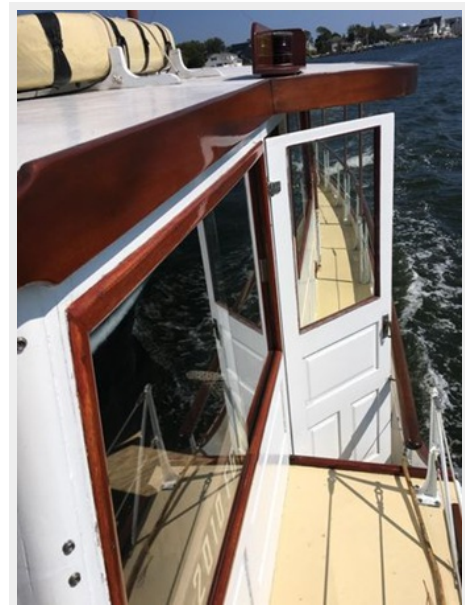
17



18



19



20



21



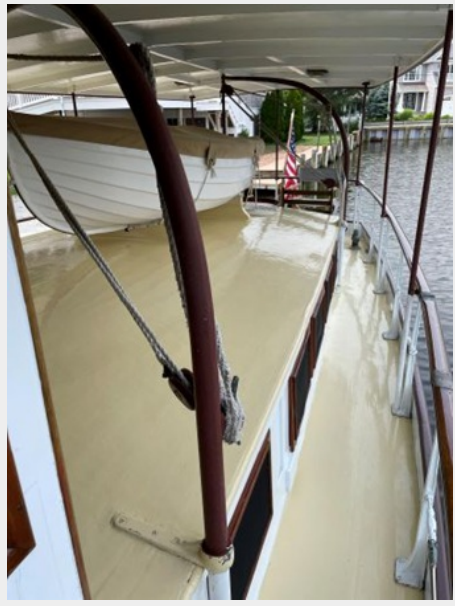
22



23



24



25



26



27



28



29



30



31



32



33



34



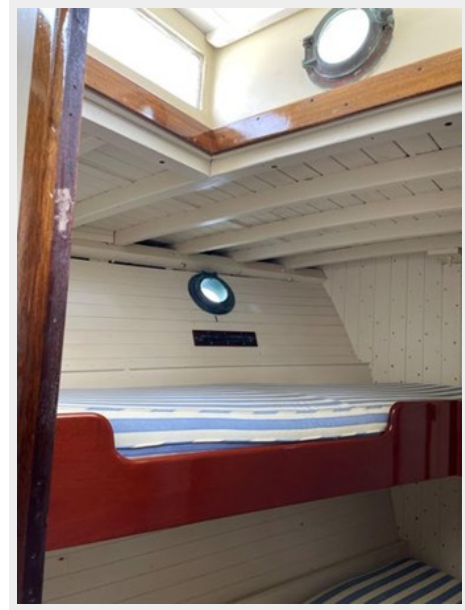
35



36



37



38



39



40



41



42



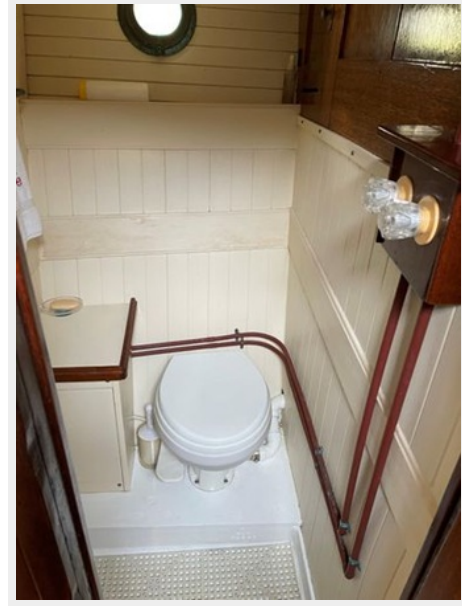
43



44



45



46



47



48



49



50



51



52



53



54



55



56



57



CONTACTS

Andrey Shestakov, leading yacht broker of the sales department of Shestakov Yacht Sales Inc. Shestakov Yacht Sales Inc., the official representative of the Miami/Fort Lauderdale FL headquarters.

Contact details

Email: andrey@shestakovyachtsales.com

Web: shestakovyachtsales.com/en/

Telephones

USA: +1(954)274-4435

Office hours

Monday – Saturday: **9:00 - 21:00** EDT

Sunday: **closed**

Address



Harbour Towne Marina, 850 NE 3rd St,
STE 213, Dania, FL 33004