

## HOMER — ALBIN



**Builder:** ALBIN

**Year Built:** 1989

**Model:** trawler

**Price:** PRICE ON APPLICATION

**Location:** United States

**LOA:** 43' (13.11mm)

**Beam:** 14.5

**Max Draft:** 4' 1" (1.24mm)

Our experienced yacht broker, Andrey Shestakov, will help you choose and buy a yacht that best suits your needs **Homer — ALBIN** from our catalogue. Presently, at Shestakov Yacht Sales Inc., we have a wide variety of yachts available on our sale's list. We also work in close contact with all the big yacht manufacturers from all over the world.

If you would like to buy a yacht **Homer — ALBIN** or would like help answering any questions concerning purchasing, selling or chartering a yacht, please call **+1(954)274-4435**

# TABLE OF CONTENTS

TABLE OF CONTENTS	2
SPECIFICATIONS	5
Overview	5
Basic Information	5
Dimensions	5
Speed, Capacities and Weight	5
Accommodations	5
Hull and Deck Information	6
Engine Information	6
PHOTOS	7
9014913_20230825070832227_1_XLARGE	7
9014913_20230825070815896_1_XLARGE	7
9014913_20230825070811880_1_XLARGE	7
9014913_20230825070913669_1_XLARGE	7
9014913_20230825070840304_1_XLARGE	7
9014913_20230825070926133_1_XLARGE	7
9014913_20230825070852325_1_XLARGE	8
9014913_20230825070935832_1_XLARGE	8
9014913_20230825070844359_1_XLARGE	8
9014913_20230825070848544_1_XLARGE	8
9014913_20230825070900464_1_XLARGE	8
9014913_20230825070904576_1_XLARGE	8
9014913_20230825070939745_1_XLARGE	9
9014913_20230825070908836_1_XLARGE	9
9014913_20230825070943856_1_XLARGE	9
9014913_20230825070951661_1_XLARGE	9
9014913_20230825070955744_1_XLARGE	9
9014913_20230825070959646_1_XLARGE	9

---

9014913_20230825071003795_1_XLARGE	10
9014913_20230825082903442_1_XLARGE	10
9014913_20230825082914544_1_XLARGE	10
9014913_20230825071020880_1_XLARGE	10
9014913_20230825071016824_1_XLARGE	11
9014913_20230825071042060_1_XLARGE	11
9014913_20230825071050412_1_XLARGE	11
9014913_20230825071054292_1_XLARGE	11
9014913_20230825071024981_1_XLARGE	11
9014913_20230825071111049_1_XLARGE	11
9014913_20230825071106861_1_XLARGE	12
9014913_20230825071102327_1_XLARGE	12
9014913_20230825071029038_1_XLARGE	12
9014913_20230825071133442_1_XLARGE	12
9014913_20230825071128981_1_XLARGE	12
9014913_20230825071137798_1_XLARGE	12
9014913_20230825071142893_1_XLARGE	13
9014913_20230825071147843_1_XLARGE	13
9014913_20230825071156217_1_XLARGE	13
9014913_20230825071201666_1_XLARGE	13
9014913_20230825071206463_1_XLARGE	13
9014913_20230825071115486_1_XLARGE	13
9014913_20230825071119714_1_XLARGE	14
9014913_20230825071211466_1_XLARGE	14
9014913_20230825071226479_1_XLARGE	14
9014913_20230825071216309_1_XLARGE	14
9014913_20230825071231518_1_XLARGE	14
9014913_20230825071242045_1_XLARGE	14
9014913_20230825071236734_1_XLARGE	15

---

---

9014913_20230825071245956_1_XLARGE	15
9014913_20230825071221434_1_XLARGE	15
9014913_20230825071046130_1_XLARGE	15
9014913_20230825071251392_1_XLARGE	15
9014913_20230825071306834_1_XLARGE	15
9014913_20230825071301712_1_XLARGE	16
9014913_20230825071312769_1_XLARGE	16
9014913_20230825071318838_1_XLARGE	16
9014913_20230825071256609_1_XLARGE	16
9014913_20230913084306338_1_XLARGE	16
9014913_20230913084310908_1_XLARGE	16
9014913_20230913084323202_1_XLARGE	17
9014913_20230913084328145_1_XLARGE	17
9014913_20230913084341692_1_XLARGE	17
CONTACTS	18
Contact details	18
Telephones	18
Office hours	18
Address	18

---

# SPECIFICATIONS

---

## Overview

---

Very Popular Layout, Full beam Aft Deck and Master Stateroom, She has a Solid fiberglass Hull and Full Keel for Gear protection, Sleeps Six Comfortably, Twin 135hp Ford Lehman Diesels, Good Electronics, Dual Zone Air Conditioning, Generator, Aft Hardtop with Solar Panels, Flybridge Bimini Top with Enclosure, Stabilized Classic Trawler.

**Currently Stored on the Hard for Summer Storage**

## Basic Information

---

**Category:** trawler

**Sub Category:** Aft Cabin

**Model Year:** 1989

**Year Built:** 1989

**Country:** United States

## Dimensions

---

**LOA:** 43' (13.11mm)

**Beam:** 14.5

**Max Draft:** 4' 1" (1.24mm)

## Speed, Capacities and Weight

---

**Water Capacity:** 300 Gallons

**Holding Tank:** 40 Gal Gallons

**Fuel Capacity:** 500 Gal Gallons

## Accommodations

---

**Total Cabins:** 2

---

## Hull and Deck Information

---

**Hull Material:** Fiberglass

---

## Engine Information

---

**Engines:** 2

**Manufacturer:** Ford Lehman

**Engine Type:** Inboard

**Fuel Type:** Diesel

# PHOTOS

9014913\_20230825070832227\_1\_XLARGE



9014913\_20230825070815896\_1\_XLARGE



9014913\_20230825070811880\_1\_XLARGE



9014913\_20230825070913669\_1\_XLARGE



9014913\_20230825070840304\_1\_XLARGE



9014913\_20230825070926133\_1\_XLARGE



9014913\_20230825070852325\_1\_XLARGE



9014913\_20230825070935832\_1\_XLARGE



9014913\_20230825070844359\_1\_XLARGE



9014913\_20230825070848544\_1\_XLARGE



9014913\_20230825070900464\_1\_XLARGE



9014913\_20230825070904576\_1\_XLARGE





9014913\_20230825070939745\_1\_XLARGE



9014913\_20230825070908836\_1\_XLARGE



9014913\_20230825070943856\_1\_XLARGE



9014913\_20230825070951661\_1\_XLARGE



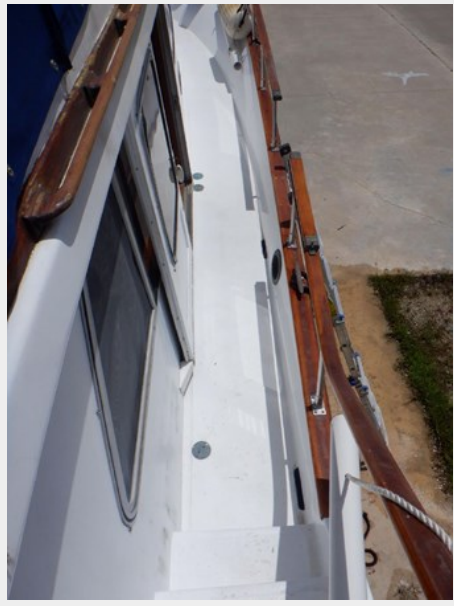
9014913\_20230825070955744\_1\_XLARGE



9014913\_20230825070959646\_1\_XLARGE



9014913\_20230825071003795\_1\_XLARGE



9014913\_20230825082903442\_1\_XLARGE



9014913\_20230825082914544\_1\_XLARGE



9014913\_20230825071020880\_1\_XLARGE



9014913\_20230825071016824\_1\_XLARGE



9014913\_20230825071042060\_1\_XLARGE



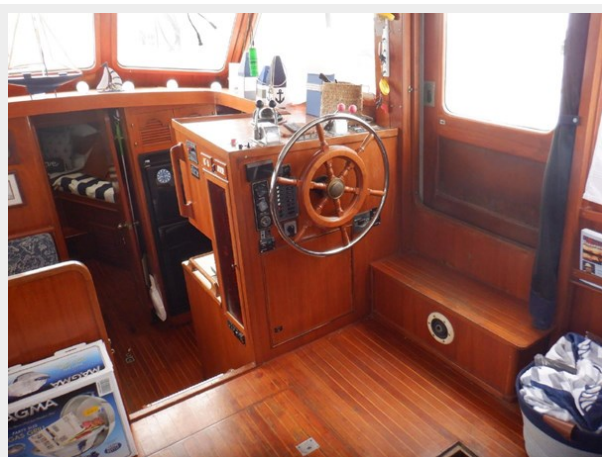
9014913\_20230825071050412\_1\_XLARGE



9014913\_20230825071054292\_1\_XLARGE



9014913\_20230825071024981\_1\_XLARGE



9014913\_20230825071111049\_1\_XLARGE



9014913\_20230825071106861\_1\_XLARGE



9014913\_20230825071102327\_1\_XLARGE



9014913\_20230825071029038\_1\_XLARGE



9014913\_20230825071133442\_1\_XLARGE



9014913\_20230825071128981\_1\_XLARGE



9014913\_20230825071137798\_1\_XLARGE



9014913\_20230825071142893\_1\_XLARGE



9014913\_20230825071147843\_1\_XLARGE



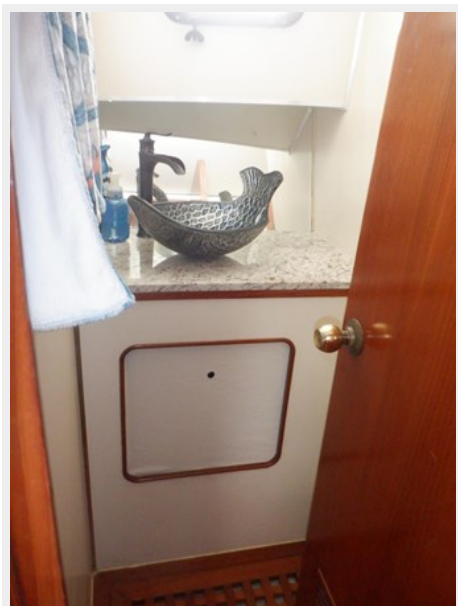
9014913\_20230825071156217\_1\_XLARGE



9014913\_20230825071201666\_1\_XLARGE



9014913\_20230825071206463\_1\_XLARGE



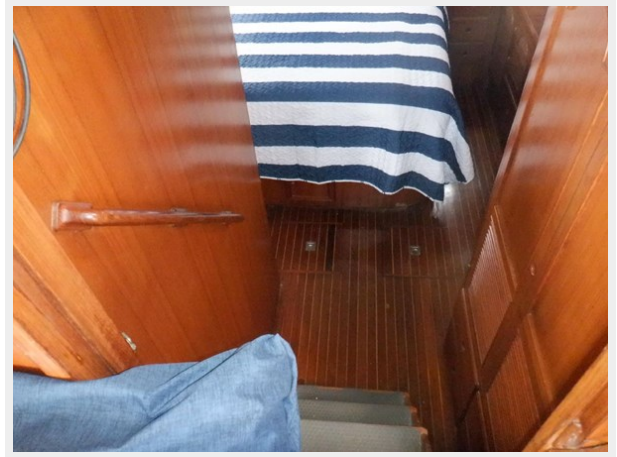
9014913\_20230825071115486\_1\_XLARGE



9014913\_20230825071119714\_1\_XLARGE



9014913\_20230825071211466\_1\_XLARGE



9014913\_20230825071226479\_1\_XLARGE



9014913\_20230825071216309\_1\_XLARGE



9014913\_20230825071231518\_1\_XLARGE



9014913\_20230825071242045\_1\_XLARGE



9014913\_20230825071236734\_1\_XLARGE



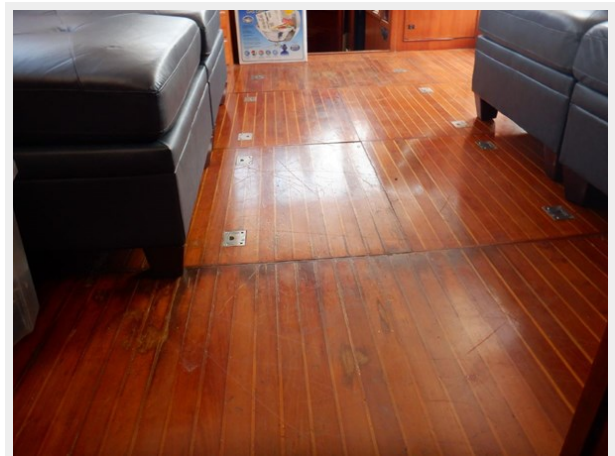
9014913\_20230825071245956\_1\_XLARGE



9014913\_20230825071221434\_1\_XLARGE



9014913\_20230825071046130\_1\_XLARGE



9014913\_20230825071251392\_1\_XLARGE



9014913\_20230825071306834\_1\_XLARGE



9014913\_20230825071301712\_1\_XLARGE



9014913\_20230825071312769\_1\_XLARGE



9014913\_20230825071318838\_1\_XLARGE



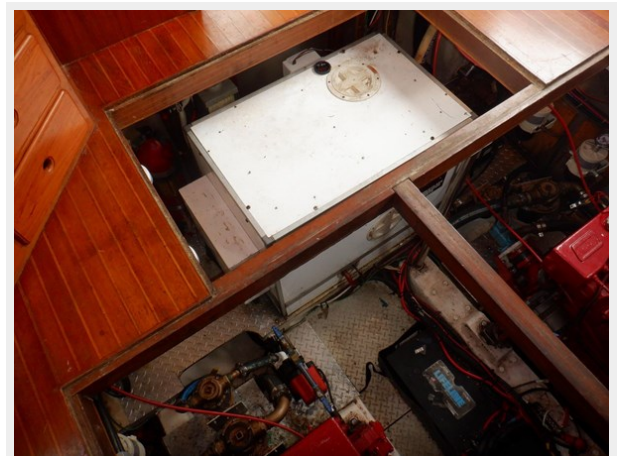
9014913\_20230825071256609\_1\_XLARGE



9014913\_20230913084306338\_1\_XLARGE



9014913\_20230913084310908\_1\_XLARGE





9014913\_20230913084323202\_1\_XLARGE



9014913\_20230913084328145\_1\_XLARGE



9014913\_20230913084341692\_1\_XLARGE



---

# CONTACTS

---

Andrey Shestakov, leading yacht broker of the sales department of Shestakov Yacht Sales Inc. Shestakov Yacht Sales Inc., the official representative of the Miami/Fort Lauderdale FL headquarters.

---

## Contact details

---

Email: [andrey@shestakovyachtsales.com](mailto:andrey@shestakovyachtsales.com)

Web: [shestakovyachtsales.com/en/](http://shestakovyachtsales.com/en/)

---

## Telephones

---

USA: +1(954)274-4435

---

## Office hours

---

Monday – Saturday: **9:00 - 21:00** EDT

Sunday: **closed**

---

## Address

---



Harbour Towne Marina, 850 NE 3rd St,  
STE 213, Dania, FL 33004