

## EL PATRON — ASTONDOA



**Builder:** ASTONDOA

**Year Built:** 2009

**Model:** Motor Yacht

**Price:** Price on Application

**Location:** United States

**LOA:** 80' (24.38m)

**Beam:** 20

**Max Draft:** 5' 9" (1.75m)

**Cruise Speed:** 21 Knots Kts. (24 MPH)

**Max Speed:** 33 Knots Kts. (38 MPH)

Our experienced yacht broker, Andrey Shestakov, will help you choose and buy a yacht that best suits your needs **El Patron — ASTONDOA** from our catalogue. Presently, at Shestakov Yacht Sales Inc., we have a wide variety of yachts available on our sale's list. We also work in close contact with all the big yacht manufacturers from all over the world.

If you would like to buy a yacht **El Patron — ASTONDOA** or would like help answering any questions concerning purchasing, selling or chartering a yacht, please call **+1(954)274-4435**

# TABLE OF CONTENTS

---

TABLE OF CONTENTS	2
SPECIFICATIONS	5
Overview	5
Basic Information	5
Dimensions	5
Speed, Capacities and Weight	5
Accommodations	5
Hull and Deck Information	6
Engine Information	6
PHOTOS	7
1	7
2	7
3	7
4	7
5	7
6	7
8	8
7	8
9	8
10	8
12	9
11	9
13	9
14	9
15	10
16	10
17	10
18	10

---

19	10
20	10
21	11
22	11
24	11
23	11
25	11
26	11
28	12
27	12
29	12
30	12
31	12
32	12
33	13
34	13
35	13
36	13
38	14
37	14
40	14
39	14
41	15
42	15
44.1	15
43	15
44	16
45	16
46	16

---

---

47	16
48	16
49	16
50	17
51	17
52	17
53	17
CONTACTS	18
Contact details	18
Telephones	18
Office hours	18
Address	18

---

# SPECIFICATIONS

---

## Overview

---

This Astondoa is designed with a large open main floor salon, galley, large windows, and open views. With 4 staterooms, an expansive master cabin, and comfortable walk-in closets. Each stateroom is luxuriously appointed with delicate fabrics and textures, and a notable heightened level to fit and finish that is unparalleled in the industry. The 78' Astondoa perfectly blends indoor and outdoor living with a large outdoor aft sitting area. Expansive flybridge that includes unique forward sun pads, wet bar with sink and grill, 4 sun beds, and a jacuzzi.

## Basic Information

---

**Category:** Motor Yacht

**Model Year:** 2009

**Year Built:** 2009

**Country:** United States

## Dimensions

---

**LOA:** 80' (24.38mm)

**Beam:** 20

**Max Draft:** 5' 9" (1.75mm)

## Speed, Capacities and Weight

---

**Cruise Speed:** 21 Knots Kts. (24 MPH)

**Max Speed:** 33 Knots Kts. (38 MPH)

**Water Capacity:** 291 Gallons

**Holding Tank:** 50 Gal Gallons

**Fuel Capacity:** 1665 Gal Gallons

## Accommodations

---

**Total Cabins:** 4

**Total Heads:** 4

**Crew Cabin:** 2

**Crew Heads:** 1

---

## Hull and Deck Information

---

**Hull Material:** Fiberglass

## Engine Information

---

**Engines:** 2

**Manufacturer:** MAN

# PHOTOS

1



2



3



4



5



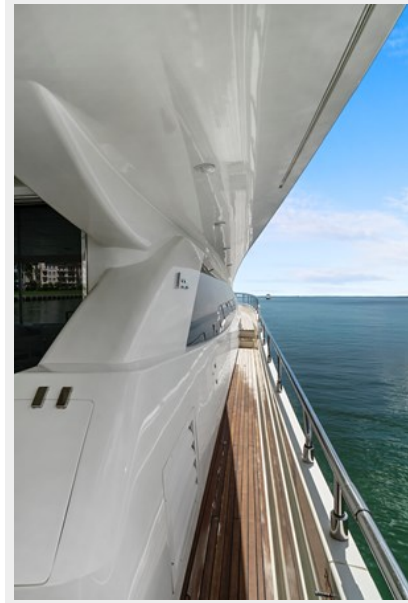
6



7



8



9



10





11



12



13



14



15



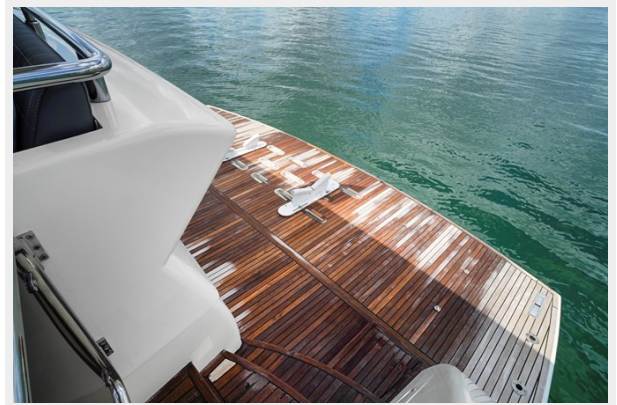
16



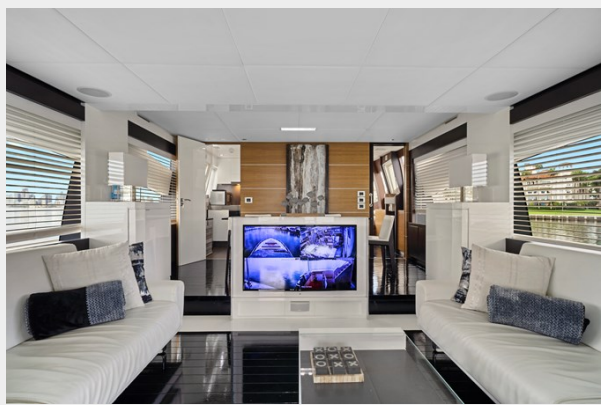
17



18



19



20



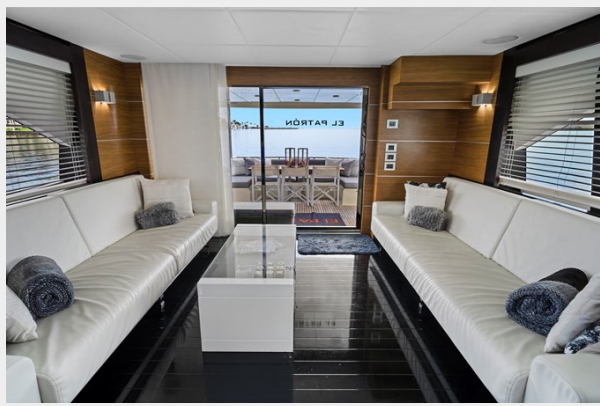
21



22



23



24



25



26



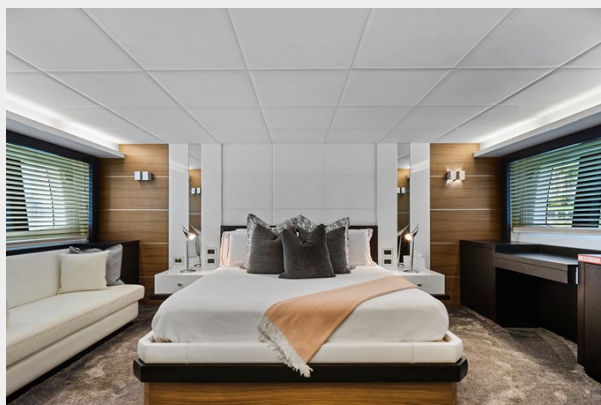
27



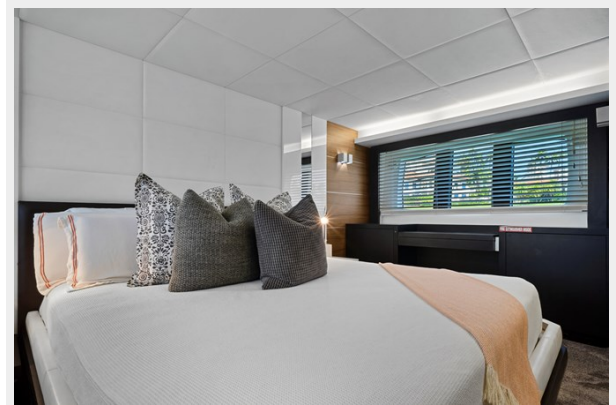
28



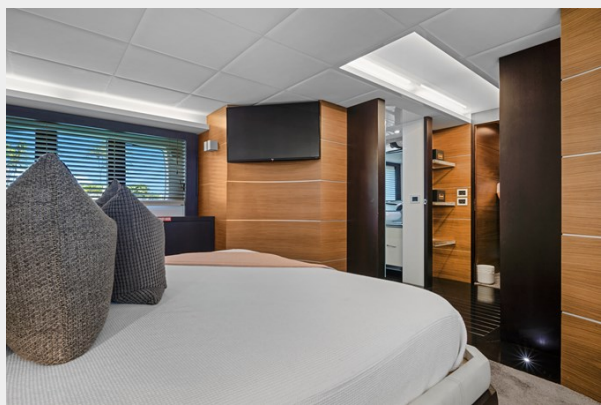
29



30



31



32



33



34



35



36



37



38



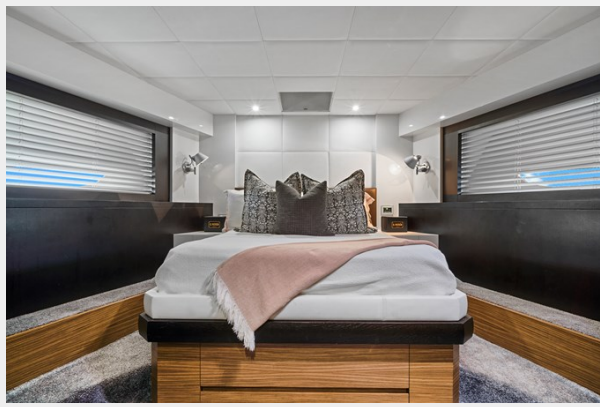
40



39



41



42



43



44.1



44



45



46



47



48



49





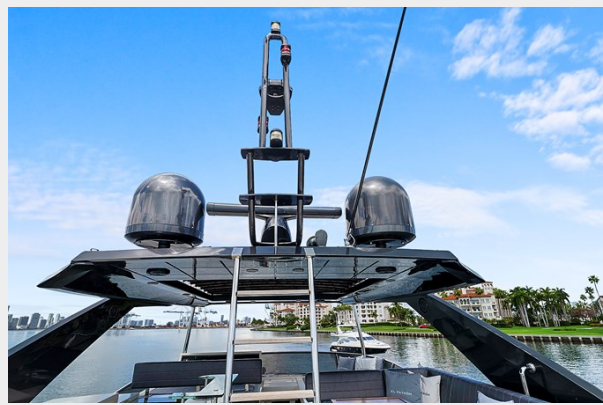
50



51



52



53



# CONTACTS

---

Andrey Shestakov, leading yacht broker of the sales department of Shestakov Yacht Sales Inc. Shestakov Yacht Sales Inc., the official representative of the Miami/Fort Lauderdale FL headquarters.

## Contact details

---

Email: [andrey@shestakovyachtsales.com](mailto:andrey@shestakovyachtsales.com)

Web: [shestakovyachtsales.com/en/](http://shestakovyachtsales.com/en/)

## Telephones

---

USA: +1(954)274-4435

## Office hours

---

Monday – Saturday: **9:00 - 21:00** EDT

Sunday: **closed**

## Address

---



Harbour Towne Marina, 850 NE 3rd St,  
STE 213, Dania, FL 33004