

MUMA — SANLORENZO



Builder: SANLORENZO

Year Built: 2016

Model: Flybridge

Price: €5,500,000 EUR

Location: Mexico

LOA: 95' 6" (29.1mm)

Beam: 22.8

Max Draft: 6' 5" (1.95mm)

Cruise Speed: 18 Knots Kts. (21 MPH)

Max Speed: 28 Knots Kts. (32 MPH)

Our experienced yacht broker, Andrey Shestakov, will help you choose and buy a yacht that best suits your needs **MUMA — SANLORENZO** from our catalogue. Presently, at Shestakov Yacht Sales Inc., we have a wide variety of yachts available on our sale's list. We also work in close contact with all the big yacht manufacturers from all over the world.

If you would like to buy a yacht **MUMA — SANLORENZO** or would like help answering any questions concerning purchasing, selling or chartering a yacht, please call **+1(954)274-4435**

TABLE OF CONTENTS

TABLE OF CONTENTS	2
SPECIFICATIONS	4
Basic Information	4
Dimensions	4
Speed, Capacities and Weight	4
Accommodations	4
Hull and Deck Information	4
Engine Information	5
PHOTOS	6
Capture d'écran 2023-08-28 à 15.20.59	6
Capture d'écran 2023-08-28 à 15.21.22	6
Capture d'écran 2023-08-28 à 15.21.12	6
Capture d'écran 2023-08-28 à 15.21.39	6
Capture d'écran 2023-08-28 à 15.22.04	6
Capture d'écran 2023-08-28 à 15.21.53	6
Capture d'écran 2023-05-14 à 18.25.47	7
Capture d'écran 2023-05-14 à 18.26.58	7
Capture d'écran 2023-05-14 à 18.27.04	7
Capture d'écran 2023-05-14 à 18.25.56	7
Capture d'écran 2023-05-14 à 18.26.37	7
Capture d'écran 2023-05-14 à 18.26.44	7
Capture d'écran 2023-05-14 à 18.26.52	7
Capture d'écran 2023-05-14 à 18.26.31	7
Capture d'écran 2023-05-14 à 18.26.24	8
Capture d'écran 2023-05-14 à 18.26.05	8
Capture d'écran 2023-05-14 à 18.26.11	8
Capture d'écran 2023-05-14 à 18.26.18	8
CONTACTS	9

Contact details	9
Telephones	9
Office hours	9
Address	9

SPECIFICATIONS

Basic Information

Category: Flybridge

Sub Category: Flybridge

Model Year: 2016

Year Built: 2016

Country: Mexico

Dimensions

LOA: 95' 6" (29.1mm)

Beam: 22.8

Max Draft: 6' 5" (1.95mm)

Speed, Capacities and Weight

Cruise Speed: 18 Knots Kts. (21 MPH)

Cruise Speed Range: 440

Max Speed: 28 Knots Kts. (32 MPH)

Gross Tonnage: 155 Pounds

Water Capacity: 1880 Gallons

Fuel Capacity: 2905.89 Gal Gallons

Fuel Consumption: 158.5 Gal Gallons

Accommodations

Total Cabins: 4

Sleeps: 9

Crew Cabin: 4

Crew Berths: 4

Hull and Deck Information

Hull Material: GRP

Deck Material: Teak

Exterior Designer: Francesco Paszkowski

Engine Information

Engines: 1

Manufacturer: MTU

Engine Type: Inboard

Fuel Type: Diesel

PHOTOS

Capture d'écran 2023-08-28 à 15.20.59



Capture d'écran 2023-08-28 à 15.21.22



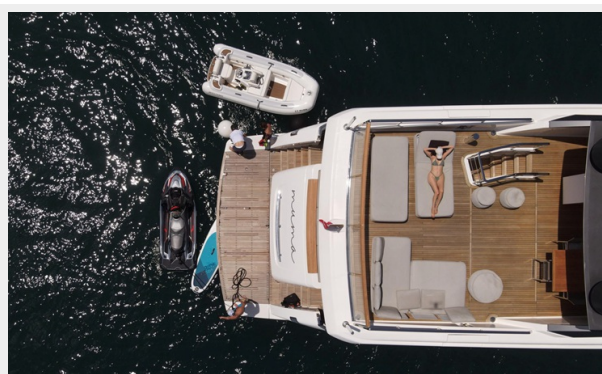
Capture d'écran 2023-08-28 à 15.21.39



Capture d'écran 2023-08-28 à 15.21.12



Capture d'écran 2023-08-28 à 15.21.53



Capture d'écran 2023-08-28 à 15.22.04



Capture d'écran 2023-05-14 à 18.25.47



Capture d'écran 2023-05-14 à 18.26.58



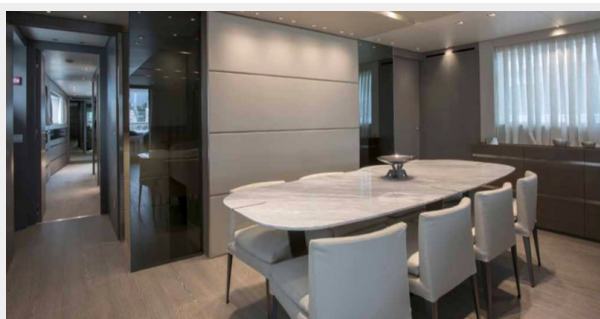
Capture d'écran 2023-05-14 à 18.27.04



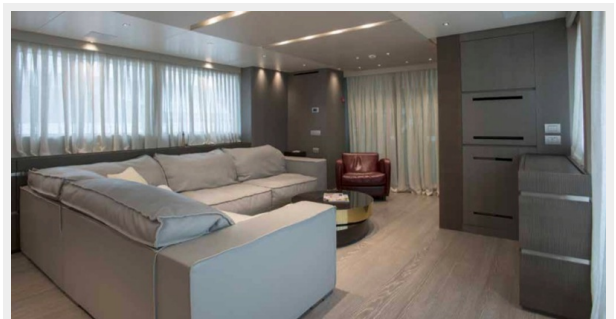
Capture d'écran 2023-05-14 à 18.25.56



Capture d'écran 2023-05-14 à 18.26.37



Capture d'écran 2023-05-14 à 18.26.44



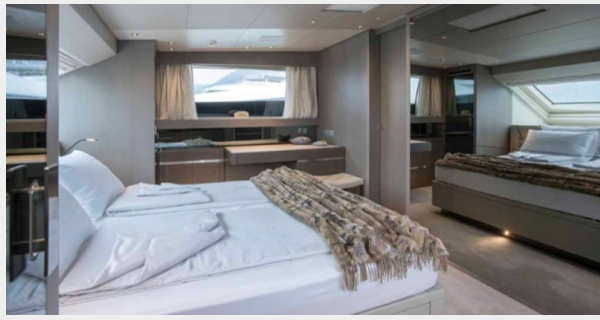
Capture d'écran 2023-05-14 à 18.26.52



Capture d'écran 2023-05-14 à 18.26.31



Capture d'écran 2023-05-14 à 18.26.24



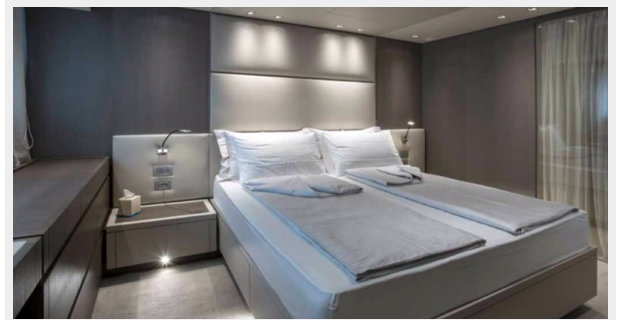
Capture d'écran 2023-05-14 à 18.26.05



Capture d'écran 2023-05-14 à 18.26.11



Capture d'écran 2023-05-14 à 18.26.18



CONTACTS

Andrey Shestakov, leading yacht broker of the sales department of Shestakov Yacht Sales Inc. Shestakov Yacht Sales Inc., the official representative of the Miami/Fort Lauderdale FL headquarters.

Contact details

Email: andrey@shestakovyachtsales.com

Web: shestakovyachtsales.com/en/

Telephones

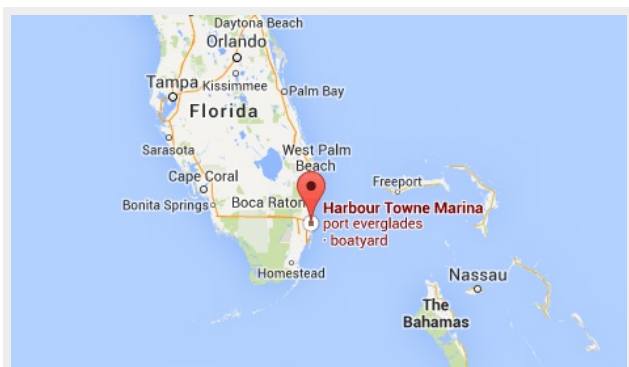
USA: +1(954)274-4435

Office hours

Monday – Saturday: **9:00 - 21:00** EDT

Sunday: **closed**

Address



Harbour Towne Marina, 850 NE 3rd St,
STE 213, Dania, FL 33004