

VENCHAR — LITTLE HARBOR



Builder: LITTLE HARBOR

Year Built: 1990

Model: Cruising Sailboat

Price: PRICE ON APPLICATION

Location: United States

LOA: 46' (14.02mm)

Beam: 13.75

Min Draft: 5' 4" (1.63mm)

Max Draft: 11' 2" (3.4mm)

Cruise Speed: 7 Knots Kts. (8 MPH)

Max Speed: 8 Knots Kts. (9 MPH)

Our experienced yacht broker, Andrey Shestakov, will help you choose and buy a yacht that best suits your needs **VENCHAR — LITTLE HARBOR** from our catalogue. Presently, at Shestakov Yacht Sales Inc., we have a wide variety of yachts available on our sale's list. We also work in close contact with all the big yacht manufacturers from all over the world.

If you would like to buy a yacht **VENCHAR — LITTLE HARBOR** or would like help answering any questions concerning purchasing, selling or chartering a yacht, please call **+1(954)274-4435**

TABLE OF CONTENTS

| | |
|------------------------------|---|
| TABLE OF CONTENTS | 2 |
| SPECIFICATIONS | 4 |
| Overview | 4 |
| Basic Information | 4 |
| Dimensions | 4 |
| Speed, Capacities and Weight | 4 |
| Accommodations | 4 |
| Hull and Deck Information | 5 |
| Engine Information | 5 |
| PHOTOS | 6 |
| At Dock | 6 |
| Interior | 6 |
| Main Salon, Fwd. | 6 |
| Main Salon, Port | 6 |
| Port Salon with Pilot Berth | 6 |
| Nav Station | 6 |
| Stbd. Salon, Looking Aft | 7 |
| Galley | 7 |
| Galley Detail | 7 |
| Aft Stateroom | 7 |
| Aft Stateroom | 7 |
| Aft Shower | 7 |
| Aft Head | 8 |
| Port Salon, across from Nav | 8 |
| Port Salon, Looking Fwd. | 8 |
| Fwd Stateroom | 8 |
| Fwd Stateroom Detail | 9 |
| Fwd Stateroom Detail | 9 |

| | |
|-----------------|----|
| Stbd. Bow | 9 |
| Port Bow | 9 |
| Foredeck | 9 |
| Deck, Fwd. | 9 |
| Looking Aft | 10 |
| Deck, Fwd. | 10 |
| Engine | 10 |
| Cockpit | 10 |
| CONTACTS | 12 |
| Contact details | 12 |
| Telephones | 12 |
| Office hours | 12 |
| Address | 12 |

SPECIFICATIONS

Overview

Hood shoal draft, center cockpit beauty. Superb craftsmanship, fore and aft staterooms, phenomenal main salon.

Basic Information

| | |
|-----------------------------|------------------------|
| Category: Cruising Sailboat | Model Year: 1990 |
| Year Built: 1990 | Country: United States |

Dimensions

| | |
|---------------------------|---------------------------|
| LOA: 46' (14.02mm) | LWL: 36' 6" (11.13mm) |
| LOD: 45' 8" (13.92mm) | Beam: 13.75 |
| Min Draft: 5' 4" (1.63mm) | Max Draft: 11' 2" (3.4mm) |

Speed, Capacities and Weight

| | |
|------------------------------------|---------------------------------|
| Cruise Speed: 7 Knots Kts. (8 MPH) | Max Speed: 8 Knots Kts. (9 MPH) |
| Gross Tonnage: 14.5 Pounds | Water Capacity: 238 Gallons |
| Fuel Capacity: 115 Gal Gallons | |

Accommodations

| | |
|-----------------|-----------------|
| Total Cabins: 2 | Total Berths: 6 |
| Total Heads: 2 | |

Hull and Deck Information

Hull Material: Fiberglass

Deck Material: Fiberglass

Hull Color: Little Harbor Blue

Hull Designer: Ted Hood

Engine Information

Engines: 1

Manufacturer: Westerbeke

Engine Type: Inboard

Fuel Type: Diesel

PHOTOS

At Dock



Interior



Main Salon, Fwd.



Main Salon, Port



Port Salon with Pilot Berth



Nav Station



Stbd. Salon, Looking Aft



Galley



Galley Detail



Aft Stateroom



Aft Stateroom



Aft Shower



Aft Head



Port Salon, across from Nav



Port Salon, Looking Fwd.



Fwd Stateroom



Fwd Stateroom Detail



Fwd Stateroom Detail



Stbd. Bow



Port Bow



Foredeck



Deck, Fwd.



Looking Aft



Deck, Fwd.

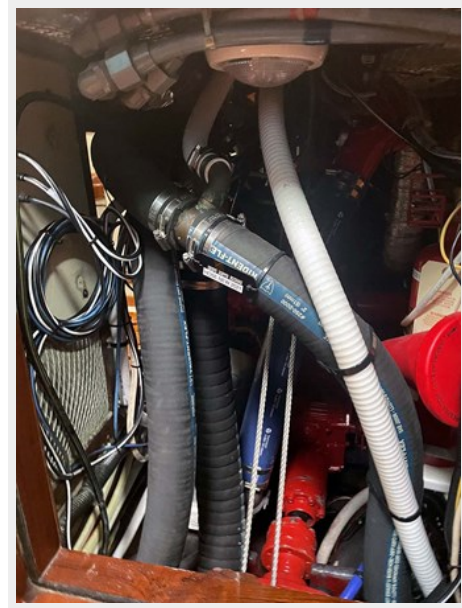


Engine



Cockpit





CONTACTS

Andrey Shestakov, leading yacht broker of the sales department of Shestakov Yacht Sales Inc. Shestakov Yacht Sales Inc., the official representative of the Miami/Fort Lauderdale FL headquarters.

Contact details

Email: **andrey@shestakovyachtsales.com**

Web: shestakovyachtsales.com/en/

Telephones

USA: **+1(954)274-4435**

Office hours

Monday – Saturday: **9:00 - 21:00 EDT**

Sunday: **closed**

Address



Harbour Towne Marina, 850 NE 3rd St,
STE 213, Dania, FL 33004