

KNEE DEEP — PRESTIGE



Builder: PRESTIGE

Year Built: 2015

Model: Motor Yacht

Price: \$595,000 USD

Location: United States

LOA: 50' (15.24mm)

Beam: 14.75

Max Draft: 3' 5" (1.04mm)

Cruise Speed: 24 Knots Kts. (28 MPH)

Max Speed: 29 Knots Kts. (33 MPH)

Our experienced yacht broker, Andrey Shestakov, will help you choose and buy a yacht that best suits your needs **Knee Deep — PRESTIGE** from our catalogue. Presently, at Shestakov Yacht Sales Inc., we have a wide variety of yachts available on our sale's list. We also work in close contact with all the big yacht manufacturers from all over the world.

If you would like to buy a yacht **Knee Deep — PRESTIGE** or would like help answering any questions concerning purchasing, selling or chartering a yacht, please call **+1(954)274-4435**

TABLE OF CONTENTS

TABLE OF CONTENTS	2
SPECIFICATIONS	6
Overview	6
Basic Information	7
Dimensions	7
Speed, Capacities and Weight	7
Accommodations	7
Hull and Deck Information	7
Engine Information	7
PHOTOS	8
1_53CF532F-01C6-4B7A-B816-B04C7CF19C76_1_201_a	8
2_E1C29D17-A0F8-4C1D-AD58-D85BE8031BF6	8
3_BBAAD9F7-B33A-45DD-A111-55CD700FA99A	8
4_1845A612-758A-43B5-A3AF-56B707563FA7_1_201_a	8
5_0F8CC96F-0EB3-4730-86D0-7F6ED4F47673	9
6_2CAA5177-C4B9-4B17-95F1-5FABD996F695	9
7_6C57C30E-6524-4FB0-A500-E0A04AF3743C_1_201_a	9
8_29A6847E-84E4-4BA0-AB3C-C8950DE0D65C	9
9_233E897A-3CB7-452E-AB3B-6C7F0E0AB2CE	9
10_D5E29C2C-DE62-491D-A873-5C77B9C83788	9
11_C5F65EA8-BC16-4AB6-BDDA-536174806749	10
12_565AC379-43D0-4B3A-9D52-55D7C65EE0B2	10
13_BDBF26AE-3092-469B-AF20-8ACDBF9B371A	10
13.1D1ED2120-08AD-433F-BAD0-D2375D8C31B2	10
13.2AC4A34DF-DA1B-4D3B-9659-72564F8E9D86	10
14_010D1E1C-217B-4AD6-8031-8EEBDE7802DC_1_201_a	10
16_925D5C4C-F399-4459-B94C-2F5BBEFBF315_1_201_a	11
15_29A572E0-1D9C-4BF2-BBB8-2890EB6EEE05	11

17_57CC2600-4724-44B5-9C43-59A53068DBFC	11
17.1_ECBC5F17-DA33-4C3D-B53B-2F05F6D6A75D	11
18_5E619502-F9B4-4BCB-A6B0-6E1ECB775267	12
19_4A20C291-3BD6-405B-8CB8-63E77E58626F	12
20_26FB456B-D0A9-4656-B6BD-E0919EDAB953_1_201_a	12
21_56381514-347F-400C-95DD-76B0D1A89D2A_1_201_a	12
23_4BFF8EEC-F079-49DC-8A0F-5DB944FB68A9	13
22_81970F2E-C286-48D9-B7F4-5D0CC18BC7CF_1_201_a	13
24_1F3E68E3-4458-48AB-8592-F2EF7C19106B_1_201_a	13
25_586CEE8B-3B36-44DF-95A7-E4617C7500C3	13
26_BBEADE56-9759-4F75-84BF-28188115E101_1_201_a	14
27_4083658F-DC5B-4913-8F25-E9FDED70563D	14
28_1C024415-CF7A-4423-ACDC-008A84133BA2_1_201_a	14
29_52EC15A2-53E4-4EC4-95F2-D921DFAE3F1A_1_201_a	14
30_A035B0E9-6682-48B5-AE0A-A7D4BA5C5096_1_201_a	15
31_AF06711C-4CFA-4C40-A217-8F4C11A804EF_1_201_a	15
32_50A58B13-8F87-4C9B-B768-85779BF8FB5D_1_201_a	15
33_8EFB5988-6A04-4BAE-A6B8-DDE9B34AF5C9	15
34_F8491935-E104-412E-8C56-5E146808D011_1_201_a	15
35_8CFB3317-1BF8-4EE4-BD79-8695FA35B958	15
36.1_C5DC65AF-6891-4EA8-A393-D93FF7F0AAEC	16
36.2_2A69C862-18F6-43A3-B760-0B5A5C0AA478_1_201_a	16
37_A826FFFF-9BCA-461B-95D9-0A421D539175	16
37.1AC6E8075-69F8-4098-9699-E8CC6B7F6429_1_201_a	16
38_008D1420-EDA8-4B46-85A4-CB811C2840BD_1_201_a	16
39_13F1F819-714E-44DF-87F3-CAB51FD578E1_1_201_a	16
40_CC20778B-66DE-4A46-98FB-87F4645B91CA_1_201_a	17
41_6C25E312-6CCD-4FD9-8B0E-B33BE53D5176_1_201_a	17
42_274976D6-4F5D-4CAC-8CFA-6424DD1B36C2_1_201_a	17

43_A7F8D768-2156-49B6-B8F9-2BA97265D2D5_1_201_a	17
44_7115C027-6951-422C-8BD0-9228B5EBCDB7_1_201_a	18
45_B875C998-9BD9-46CE-AFA8-13A79873F141	18
46_F2366697-D380-4355-BDBA-0EFFF464FF28	18
47_D42CFE48-5470-4A76-8E94-1BF95AC3E909_1_201_a	18
49_A649577A-4D6B-4973-94AD-C3C973C8FFB0_1_201_a	19
48_4417AF-ABF9-4DEB-86C7-F7F32345CBD0_1_201_a	19
50_EC8DC99E-9558-4B16-9F43-DDAB2498A087_1_201_a	19
51_AC414598-E469-4A51-B0CD-204835CABAB4_1_201_a	19
53_E0C71A1A-D2C0-4C58-9BA7-7862E66FBC16	20
52_FA78AC12-1355-49F8-A3A1-33C9D478051D_1_201_a	20
55_0DB0FD95-A687-4B19-9615-764515B435F0_1_201_a	20
54_7F48EE1C-625E-4694-9F43-A4D18320F62B_1_201_a	20
56_4A73D847-F275-4D87-BE21-B619615D647C_1_201_a	21
55.1_1EDF2A67-70FA-4446-A05D-3B7E2871452F	21
58_B7E250F2-B235-4818-A3DA-598D15039034	21
57FDF46B-0F47-428B-B276-047FFD7E1C4C	21
59_FFB7049D-6236-4A87-A5E9-B9818C9C56D6_1_201_a	22
60_EF0519B3-B0A1-43B0-B4AF-FF8048FC1D37_1_201_a	22
61_F07A7FCB-E8E0-45D9-8D38-1B39D44AA70E	22
62_1D0CF03F-F34E-428A-AD16-E759126672C4	22
63_A52E5102-2371-4898-BC10-2595C9838852_1_201_a	23
64_BB61CB11-120E-4610-BB0C-2E6472A9303D	23
65_C9DB15DD-DDED-4ED5-9136-93CC1FAD3E2A	23
66_C74C6066-4E8F-4180-943D-37DD9515B678_1_201_a	23
67_65FC7808-A8E6-47B2-A796-37022EB354E0	24
68_9EE78C1D-710B-4378-8296-AF07E96E450A_1_201_a	24
69_C6837000-E561-4DE0-9DB3-5B83B42A8373	24
70_836E5468-30C7-4F86-971C-7A2D5BA94306	24

71_3A88064B-3272-4391-B0C6-5C8462239361_1_201_a	25
72_3B708D3B-CA47-4319-8548-F3630ED0AF82_1_201_a	25
73_1F346B18-6CB5-4404-84A5-39BE569B02DE	25
74_73974768-1936-4B8F-970F-ADE92F607583_1_201_a	25
75_D0CFAC64-9115-42CF-A286-E6BC8C343FF5	26
76_78F4545A-65CA-498D-BF62-D0ACF3BF287B_1_201_a	26
77_494734D9-4DDB-44F5-B66D-279C39BB4849	26
CONTACTS	27
Contact details	27
Telephones	27
Office hours	27
Address	27

SPECIFICATIONS

Overview

WE ARE PLEASED TO OFFER "KNEE DEEP"

2015 PRESTIGE 500

The award winning Prestige 500 is known to check off a lot of boxes and is one of the most popular 50' vessels in its class. From its private master entry, to its massive flybridge, the Prestige 500 provides incredible comfort and style. The salon features very large windows allowing a lot of natural light to come in to make the salon a centerpiece of the Prestige 500. She is powered with very fuel efficient and reliable Volvo diesel engines that have always been serviced and maintained accordingly.

"Knee Deep" has always been privately used and maintained by a full time captain with an open check book. She has the preferred Hydraulic swim platform which allows the option to carry a dinghy, Jetski, or to use as an open entertainment area or beach club. This is a must have option for a vessel of this size! Most of the hours on "Knee Deep" are from seasonal trips between Virginia and Florida. She must be seen to appreciate and will not disappoint.

RECENT NOTABLE WORK & OPTIONS:

- All 8 batteries replaced (October 2020)
- Full exterior detail (August 2023)
- Engine room & bilge detail (August 2023)
- Intercooler & heat exchanger service (July 2023)
- Engine & Generator service (July 2023)
- 1000 hr service performed (August 2022)
- Both IPS PODS have been replaced (2021,2022)
- Air conditioning system serviced and descaled (August 2023)
- NEW Carpets throughout (2022) - Professionally cleaned (August 2023)
- NEW JL Audio/Fusion sound system throughout
- NEW bow and flybridge sun pads
- NEW Bimini top (2021)
- Swim platform hydraulic pack has been rebuilt
- Flybridge and aft deck tables have been custom varnished & refinished
- A Spot Zero RO water system (included) has always been used to maintain exterior finish
- Spare set of props included
- 3rd docking station on aft deck
- Extendable electric shade on aft deck
- Single berth crew quarter aft with separate head
- Electric grill and coolbox on flybridge

Basic Information

Category: Motor Yacht

Model Year: 2015

Year Built: 2015

Country: United States

Dimensions

LOA: 50' (15.24mm)

Beam: 14.75

Max Draft: 3' 5" (1.04mm)

Speed, Capacities and Weight

Cruise Speed: 24 Knots Kts. (28 MPH)

Max Speed: 29 Knots Kts. (33 MPH)

Water Capacity: 84 Gallons

Holding Tank: 32 Gal Gallons

Fuel Capacity: 172 Gal Gallons

Accommodations

Total Cabins: 3

Total Heads: 2

Hull and Deck Information

Hull Material: Fiberglass

Engine Information

Engines: 2

Manufacturer: Volvo

Engine Type: Inboard

Fuel Type: Diesel

PHOTOS

1_53CF532F-01C6-4B7A-B816-
B04C7CF19C76_1_201_a



2_E1C29D17-A0F8-4C1D-AD58-
D85BE8031BF6



3_BBAAD9F7-B33A-45DD-A111-
55CD700FA99A



4_1845A612-758A-43B5-A3AF-
56B707563FA7_1_201_a



5_0F8CC96F-0EB3-4730-86D0-7F6ED4F47673



6_2CAA5177-C4B9-4B17-95F1-5FABD996F695



7_6C57C30E-6524-4FB0-A500-E0A04AF3743C_1_201_a



8_29A6847E-84E4-4BA0-AB3C-C8950DE0D65C



9_233E897A-3CB7-452E-AB3B-6C7F0E0AB2CE



10_D5E29C2C-DE62-491D-A873-5C77B9C83788



11_C5F65EA8-BC16-4AB6-BDDA-536174806749



12_565AC379-43D0-4B3A-9D52-55D7C65EE0B2



13_BDBF26AE-3092-469B-AF20-8ACDBF9B371A



13.1D1ED2120-08AD-433F-BAD0-D2375D8C31B2



13.2AC4A34DF-DA1B-4D3B-9659-72564F8E9D86



14_010D1E1C-217B-4AD6-8031-8EEBDE7802DC_1_201_a



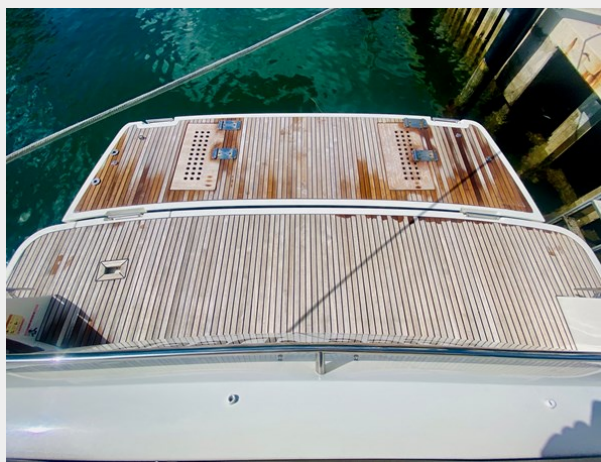
15_29A572E0-1D9C-4BF2-BBB8-2890EB6EEE05



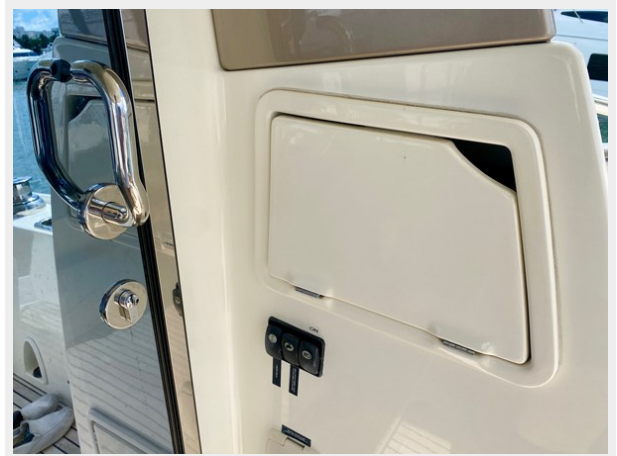
16_925D5C4C-F399-4459-B94C-2F5BBEFBF315_1_201_a



17_57CC2600-4724-44B5-9C43-59A53068DBFC



17.1_ECBC5F17-DA33-4C3D-B53B-2F05F6D6A75D



18_5E619502-F9B4-4BCB-A6B0-6E1ECB775267



19_4A20C291-3BD6-405B-8CB8-63E77E58626F



20_26FB456B-D0A9-4656-B6BD-E0919EDAB953_1_201_a



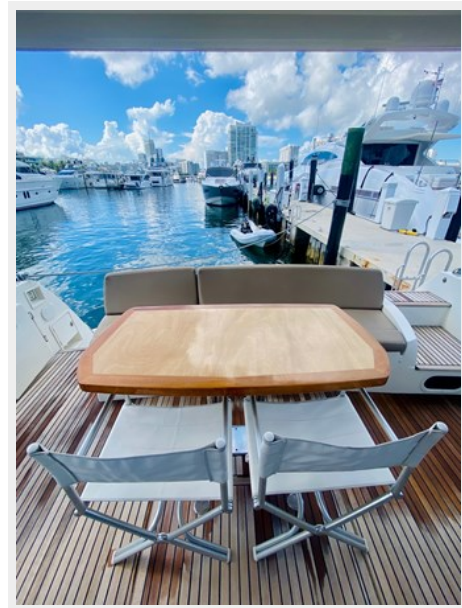
21_56381514-347F-400C-95DD-76B0D1A89D2A_1_201_a



22_81970F2E-C286-48D9-B7F4-5D0CC18BC7CF_1_201_a



23_4BFF8EEC-F079-49DC-8A0F-5DB944FB68A9



24_1F3E68E3-4458-48AB-8592-F2EF7C19106B_1_201_a



25_586CEE8B-3B36-44DF-95A7-E4617C7500C3



26_BBEADE56-9759-4F75-84BF-28188115E101_1_201_a



27_4083658F-DC5B-4913-8F25-E9FDED70563D



28_1C024415-CF7A-4423-ACDC-008A84133BA2_1_201_a



29_52EC15A2-53E4-4EC4-95F2-D921DFAE3F1A_1_201_a



30_A035B0E9-6682-48B5-AE0A-A7D4BA5C5096_1_201_a



31_AF06711C-4CFA-4C40-A217-8F4C11A804EF_1_201_a



32_50A58B13-8F87-4C9B-B768-85779BF8FB5D_1_201_a



33_8EFB5988-6A04-4BAE-A6B8-DDE9B34AF5C9



34_F8491935-E104-412E-8C56-5E146808D011_1_201_a



35_8CFB3317-1BF8-4EE4-BD79-8695FA35B958



36.1_C5DC65AF-6891-4EA8-A393-D93FF7F0AAEC



36.2_2A69C862-18F6-43A3-B760-0B5A5C0AA478_1_201_a



37_A826FFFF-9BCA-461B-95D9-0A421D539175



37.1AC6E8075-69F8-4098-9699-E8CC6B7F6429_1_201_a



38_008D1420-EDA8-4B46-85A4-CB811C2840BD_1_201_a



39_13F1F819-714E-44DF-87F3-CAB51FD578E1_1_201_a



40_CC20778B-66DE-4A46-98FB-87F4645B91CA_1_201_a



41_6C25E312-6CCD-4FD9-8B0E-B33BE53D5176_1_201_a



42_274976D6-4F5D-4CAC-8CFA-6424DD1B36C2_1_201_a



43_A7F8D768-2156-49B6-B8F9-2BA97265D2D5_1_201_a



44_7115C027-6951-422C-8BD0-9228B5EBCDB7_1_201_a



45_B875C998-9BD9-46CE-AFA8-13A79873F141



46_F2366697-D380-4355-BDBA-0EFFF464FF28



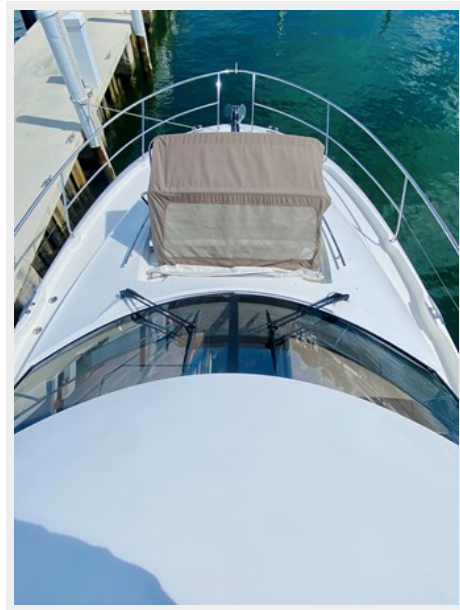
47_D42CFE48-5470-4A76-8E94-1BF95AC3E909_1_201_a



48_4417AF-ABF9-4DEB-86C7-
F7F32345CBD0_1_201_a



49_A649577A-4D6B-4973-94AD-
C3C973C8FFB0_1_201_a



50_EC8DC99E-9558-4B16-9F43-
DDAB2498A087_1_201_a



51_AC414598-E469-4A51-B0CD-
204835CABAB4_1_201_a



52_FA78AC12-1355-49F8-A3A1-33C9D478051D_1_201_a



53_E0C71A1A-D2C0-4C58-9BA7-7862E66FBC16



54_7F48EE1C-625E-4694-9F43-A4D18320F62B_1_201_a



55_0DB0FD95-A687-4B19-9615-764515B435F0_1_201_a



55.1_1EDF2A67-70FA-4446-A05D-3B7E2871452F



56_4A73D847-F275-4D87-BE21-B619615D647C_1_201_a



57FDF46B-0F47-428B-B276-047FFD7E1C4C



58_B7E250F2-B235-4818-A3DA-598D15039034



59_FFB7049D-6236-4A87-A5E9-
B9818C9C56D6_1_201_a



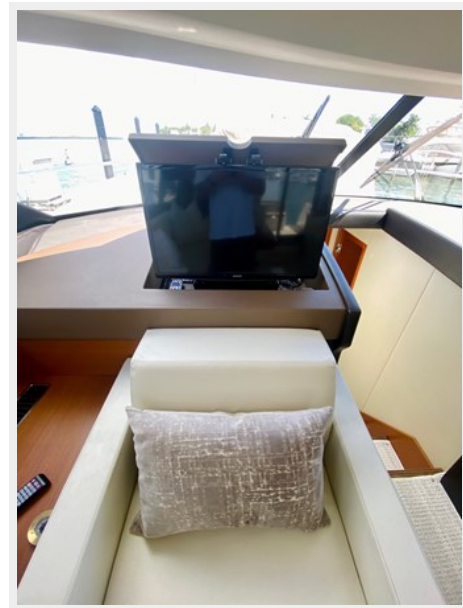
60_EF0519B3-B0A1-43B0-B4AF-
FF8048FC1D37_1_201_a



61_F07A7FCB-E8E0-45D9-8D38-
1B39D44AA70E



62_1D0CF03F-F34E-428A-AD16-
E759126672C4



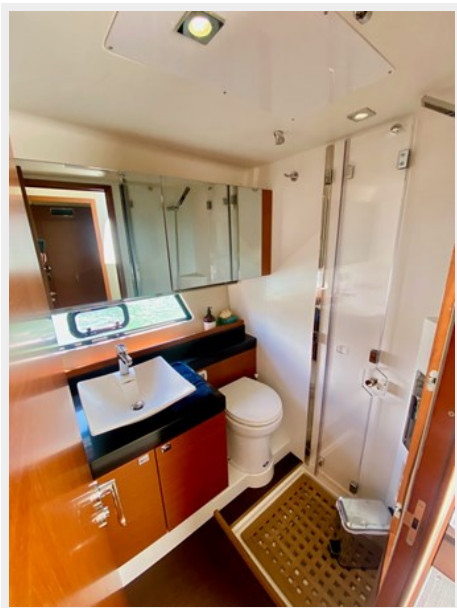
63_A52E5102-2371-4898-BC10-2595C9838852_1_201_a



64_BB61CB11-120E-4610-BB0C-2E6472A9303D



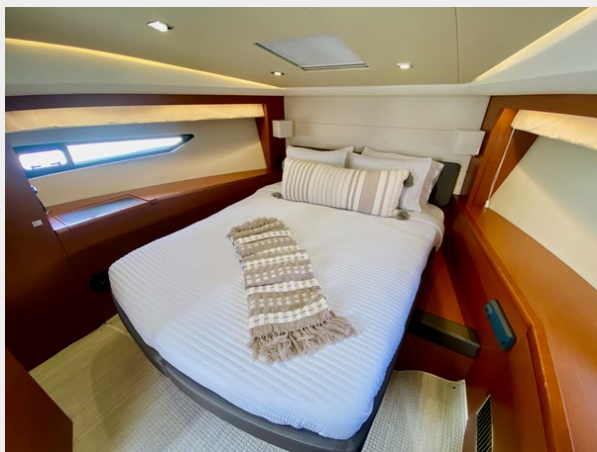
65_C9DB15DD-DDED-4ED5-9136-93CC1FAD3E2A



66_C74C6066-4E8F-4180-943D-37DD9515B678_1_201_a



67_65FC7808-A8E6-47B2-A796-37022EB354E0



68_9EE78C1D-710B-4378-8296-AF07E96E450A_1_201_a



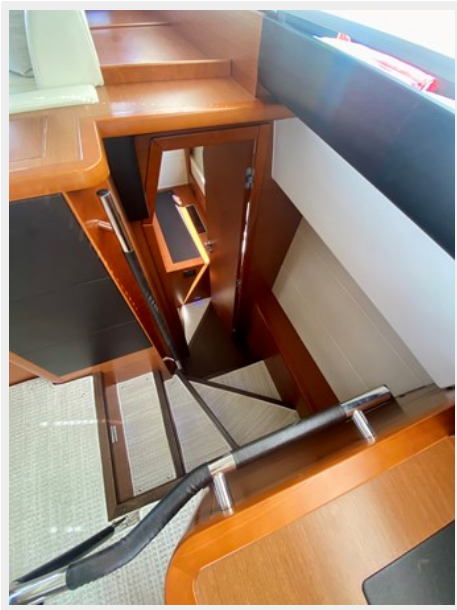
69_C6837000-E561-4DE0-9DB3-5B83B42A8373



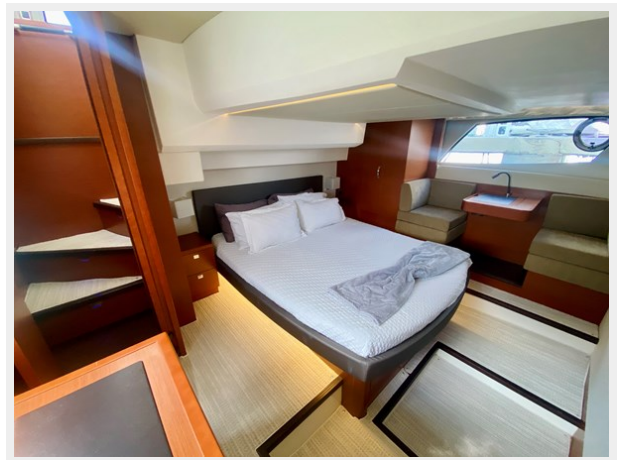
70_836E5468-30C7-4F86-971C-7A2D5BA94306



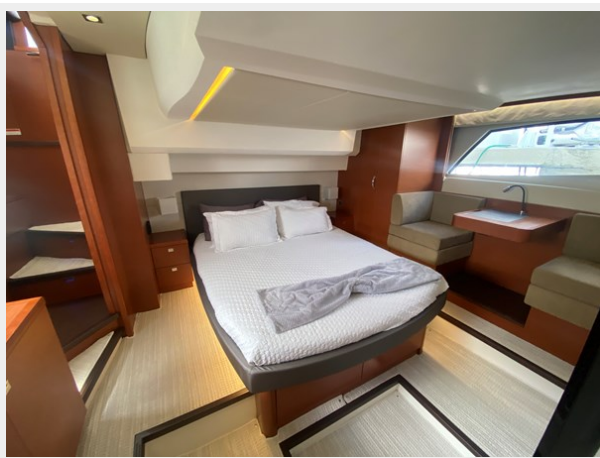
71_3A88064B-3272-4391-B0C6-5C8462239361_1_201_a



72_3B708D3B-CA47-4319-8548-F3630ED0AF82_1_201_a



73_1F346B18-6CB5-4404-84A5-39BE569B02DE



74_73974768-1936-4B8F-970F-ADE92F607583_1_201_a



75_D0CFAC64-9115-42CF-A286-
E6BC8C343FF5



76_78F4545A-65CA-498D-BF62-
D0ACF3BF287B_1_201_a



77_494734D9-4DDB-44F5-B66D-279C39BB4849



CONTACTS

Andrey Shestakov, leading yacht broker of the sales department of Shestakov Yacht Sales Inc. Shestakov Yacht Sales Inc., the official representative of the Miami/Fort Lauderdale FL headquarters.

Contact details

Email: andrey@shestakovyachtsales.com

Web: shestakovyachtsales.com/en/

Telephones

USA: +1(954)274-4435

Office hours

Monday – Saturday: **9:00 - 21:00** EDT

Sunday: **closed**

Address



Harbour Towne Marina, 850 NE 3rd St,
STE 213, Dania, FL 33004