

ROCKABUY — SABRE YACHTS



Builder: SABRE YACHTS

Year Built: 2006

Model: Flybridge

Price: PRICE ON APPLICATION

Location: United States

LOA: 42' 3" (12.88mm)

Beam: 14.33

Min Draft: 3' 9" (1.14mm)

Cruise Speed: 24 Knots Kts. (28 MPH)

Max Speed: 30 Knots Kts. (35 MPH)

Our experienced yacht broker, Andrey Shestakov, will help you choose and buy a yacht that best suits your needs **ROCKABUY — SABRE YACHTS** from our catalogue. Presently, at Shestakov Yacht Sales Inc., we have a wide variety of yachts available on our sale's list. We also work in close contact with all the big yacht manufacturers from all over the world.

If you would like to buy a yacht **ROCKABUY — SABRE YACHTS** or would like help answering any questions concerning purchasing, selling or chartering a yacht, please call **+1(954)274-4435**

TABLE OF CONTENTS

TABLE OF CONTENTS	2
SPECIFICATIONS	6
Overview	6
Basic Information	6
Dimensions	6
Speed, Capacities and Weight	6
Accommodations	6
Hull and Deck Information	7
Engine Information	7
PHOTOS	8
Dockside view from aft	8
Cockpit	8
Cockpit counter and sink	8
Walkaround side decks, shiny gelcoat	8
Comfortably pitched ladder to flybridge	8
Flybridge	8
View from flybridge lounge	9
Settee and cocktail table	9
Flybridge helm	9
Garmin electronics	9
Bow and stern thrusters, engine controls	9
Garmin MFDs 2020	9
View of aft lounge	10
Comfortable Stidd chairs	10
Chart table	10
Hinged open salon door	10
Lower helm	10
Lower helm switch panels	10

Forward salon area	11
Helm bench seat	11
Salon settee	11
Salon from cabin door	11
Hi-Low table, teak and holly sole	11
Starboard side salon settee	11
View aft of seating	12
Deckhouse side door open	12
Helm bench seat folded down	12
Fusion stereo and Bose speaker	12
Main electrical panel	12
Salon headliner	12
Galley	13
Vitrifrigo refrigerator freezer drawers	13
Microwave convection oven	13
Stovetop and counterspace	13
Stainless sink	13
Galley view from above	13
Lower companionway, teak and holly sole	14
Master stateroom forward	14
Master stateroom portside	14
Master stateroom starboard side	14
Head	14
Lounge - Guest cabin	14
Guest cabin	15
Guest cabin with berth expanded	15
One of the guest cabin doors closed	15
Guest cabin, both doors closed	15
Filler cushions out make an extra berth in salon	15

Bow pulpit	15
Forward deckhouse	16
Bow storage lockers	16
Cablemaster	16
Name boards and shining gelcoat	16
Forward windows	16
New windows	16
Toe railing and engine room vents	17
Teak flybridge trim	17
Sabre Yachts, Casco, Maine	17
Northeast based 42' Sabre Sedan	17
Cockpit hatches up	17
Back in the cabin	17
TV on the Nav desk	18
Forward view of salon	18
Engine room entrance	18
Yanmar diesels, 480hp each	18
Starboard motor	18
Port motor	18
Inverter, 3000 watt	19
Battery charger and engine batteries	19
Hot water heater and Fireboy system	19
Generator hours	19
Hinged signal mast	19
Main engine hours	19
Forward panels of enclosure	20
Canvas covers on flybridge	20
Layout diagram	20
Canvas helm and captain chair covers	20

Dockside view from starboard forward	20
CONTACTS	21
Contact details	21
Telephones	21
Office hours	21
Address	21

SPECIFICATIONS

Overview

N/A

Basic Information

Category: Flybridge

Sub Category: Flybridge

Model Year: 2007

Year Built: 2006

Country: United States

Dimensions

LOA: 42' 3" (12.88mm)

Beam: 14.33

Min Draft: 3' 9" (1.14mm)

Speed, Capacities and Weight

Cruise Speed: 24 Knots Kts. (28 MPH)

Max Speed: 30 Knots Kts. (35 MPH)

Water Capacity: 160 Gallons

Holding Tank: 60 Gal Gallons

Fuel Capacity: 454 Gal Gallons

Accommodations

Total Cabins: 2

Total Heads: 1

Hull and Deck Information

Hull Material: Fiberglass

Hull Configuration: Modified V-Hull

Hull Designer: Sabre Yachts

Engine Information

Engines: 2

Manufacturer: Yanmar

Engine Type: Inboard

Fuel Type: Diesel

PHOTOS

Dockside view from aft



Cockpit



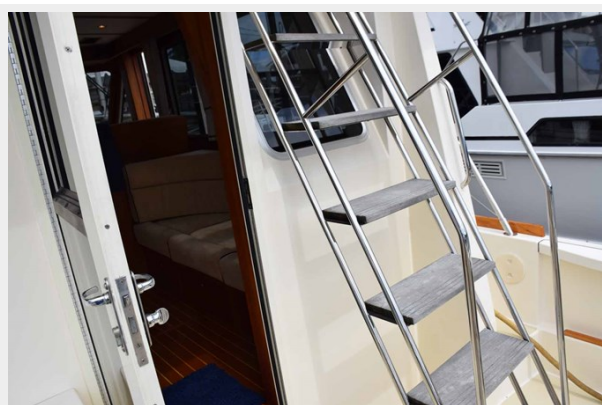
Cockpit counter and sink



Walkaround side decks, shiny gelcoat



Comfortably pitched ladder to flybridge



Flybridge



View from flybridge lounge



Settee and cocktail table



Flybridge helm



Garmin electronics



Bow and stern thrusters, engine controls



Garmin MFDs 2020



View of aft lounge



Comfortable Stidd chairs



Chart table



Hinged open salon door



Lower helm



Lower helm switch panels



Forward salon area



Helm bench seat



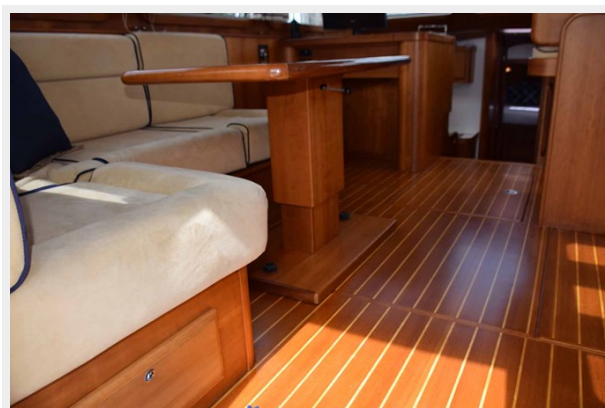
Salon settee



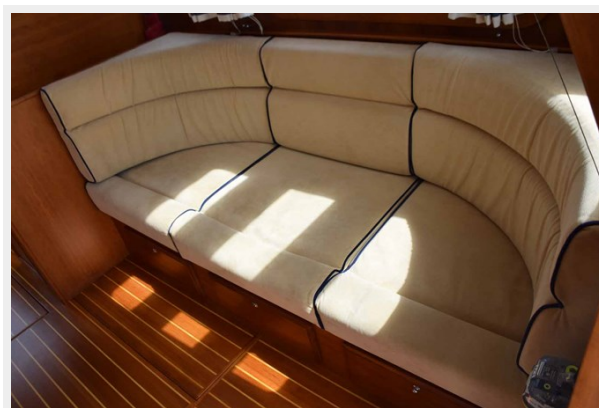
Salon from cabin door



Hi-Low table, teak and holly sole



Starboard side salon settee



View aft of seating



Deckhouse side door open



Helm bench seat folded down



Fusion stereo and Bose speaker



Main electrical panel



Salon headliner



Galley



Vitrifrigo refrigerator freezer drawers



Microwave convection oven



Stovetop and counterspace



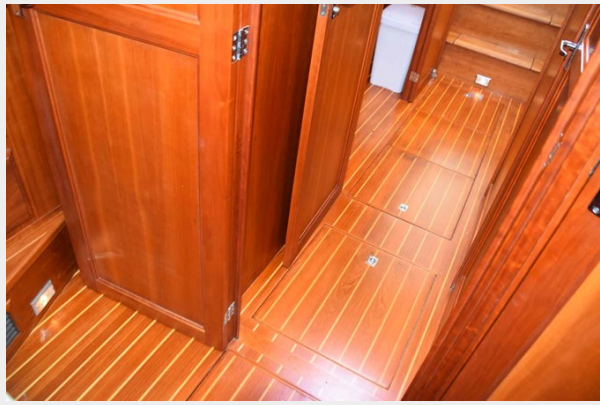
Stainless sink



Galley view from above



Lower companionway, teak and holly sole



Master stateroom forward



Master stateroom portside



Master stateroom starboard side



Head



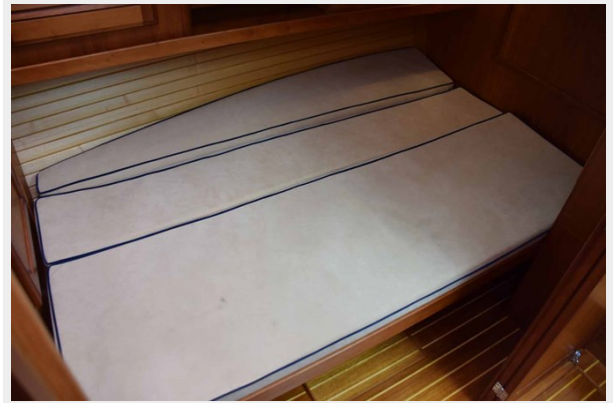
Lounge - Guest cabin



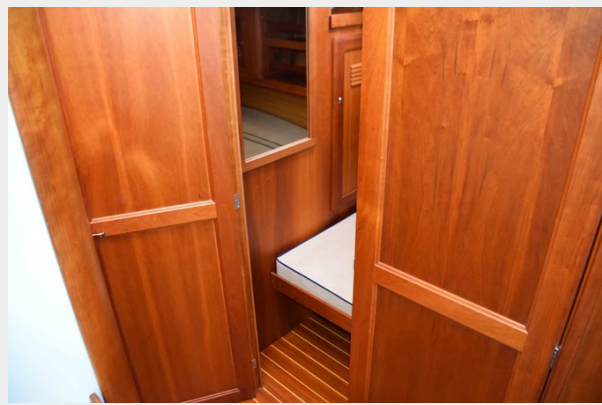
Guest cabin



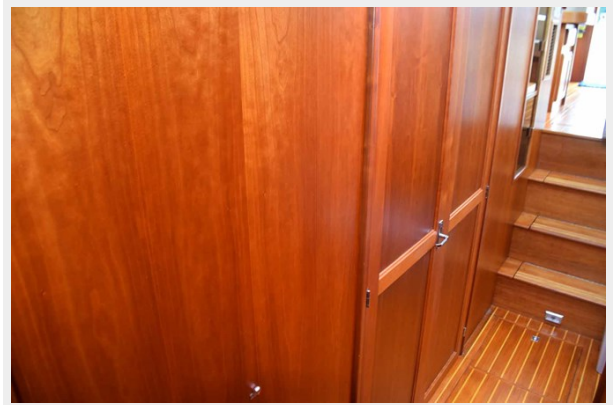
Guest cabin with berth expanded



One of the guest cabin doors closed



Guest cabin, both doors closed



Filler cushions out make an extra berth in salon



Bow pulpit



Forward deckhouse



Bow storage lockers



Cablemaster



Name boards and shining gelcoat



Forward windows



New windows



Toe railing and engine room vents



Teak flybridge trim



Sabre Yachts, Casco, Maine



Northeast based 42' Sabre Sedan



Cockpit hatches up



Back in the cabin



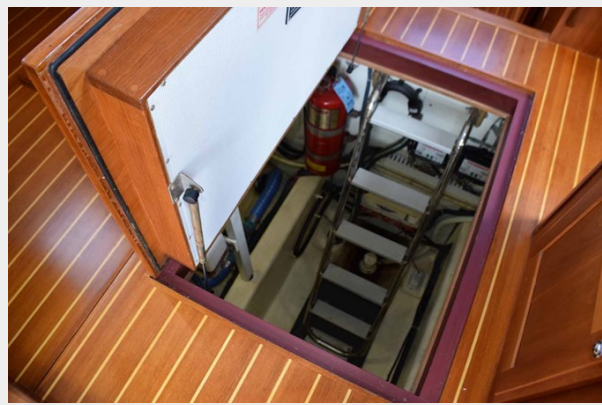
TV on the Nav desk



Forward view of salon



Engine room entrance



Yanmar diesels, 480hp each



Starboard motor



Port motor



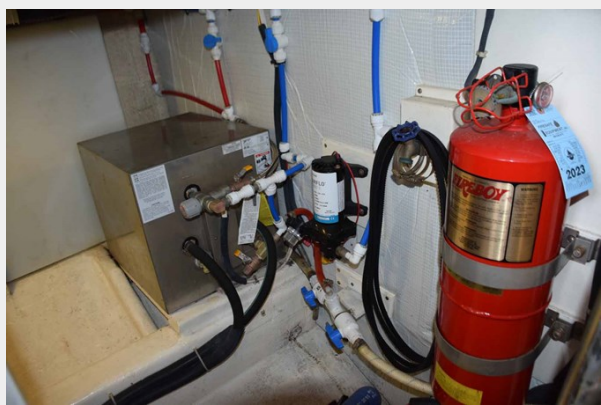
Inverter, 3000 watt



Battery charger and engine batteries



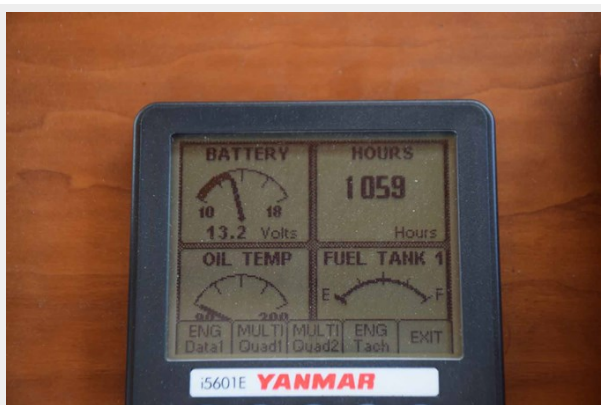
Hot water heater and Fireboy system



Generator hours



Main engine hours



Hinged signal mast



Forward panels of enclosure



Canvas covers on flybridge



Canvas helm and captain chair covers



Layout diagram



Dockside view from starboard forward



CONTACTS

Andrey Shestakov, leading yacht broker of the sales department of Shestakov Yacht Sales Inc. Shestakov Yacht Sales Inc., the official representative of the Miami/Fort Lauderdale FL headquarters.

Contact details

Email: andrey@shestakovyachtsales.com

Web: shestakovyachtsales.com/en/

Telephones

USA: +1(954)274-4435

Office hours

Monday – Saturday: **9:00 - 21:00** EDT

Sunday: **closed**

Address



Harbour Towne Marina, 850 NE 3rd St,
STE 213, Dania, FL 33004