

CARVER C40 MOTORYACHT — CARVER



Builder: CARVER

Year Built: 2014

Model: Motor Yacht

Price: PRICE ON APPLICATION

Location: United States

LOA: 40' (12.19mm)

Beam: 13.5

Max Draft: 3' 6" (1.07mm)

Our experienced yacht broker, Andrey Shestakov, will help you choose and buy a yacht that best suits your needs **Carver C40 Motoryacht — CARVER** from our catalogue. Presently, at Shestakov Yacht Sales Inc., we have a wide variety of yachts available on our sale's list. We also work in close contact with all the big yacht manufacturers from all over the world.

If you would like to buy a yacht **Carver C40 Motoryacht — CARVER** or would like help answering any questions concerning purchasing, selling or chartering a yacht, please call **+1(954)274-4435**

TABLE OF CONTENTS

TABLE OF CONTENTS	2
SPECIFICATIONS	5
Overview	5
Basic Information	5
Dimensions	5
Speed, Capacities and Weight	5
Accommodations	5
Hull and Deck Information	5
Engine Information	5
PHOTOS	6
53_2799797_40_carver_racor_fuel_filters	6
54_2799797_40_carver_water_filtration_system	6
55_2799797_40_carver_water_heater	6
56_2799797_40_carver_electrical_panel1	6
57_2799797_40_carver_electrical_panel2	6
58_2799797_40_carver_generator_soundbox	6
59_2799797_40_carver_generator	7
60_2799797_40_carver_generator_racor_fuel_filter	7
61_2799797_40_carver_battery_chargers	7
1_2799797_40_carver_starboard_profile	7
3_2799797_40_carver_aft_profile	7
2_2799797_40_carver_port_aft_profile	7
4_2799797_40_carver_anchor	8
5_2799797_40_carver_anchor_windlass	8
6_2799797_40_carver_foredeck1	8
7_2799797_40_carver_foredeck2	8
8_2799797_40_carver_foredeck_aft	8
9_2799797_40_carver_foredeck_sunpads	8

10_2799797_40_carver_port_side_deck1	9
11_2799797_40_carver_port_side_deck2	9
12_2799797_40_carver_starboard_side_deck1	9
13_2799797_40_carver_starboard_side_deck2	9
14_2799797_40_carver_flybirdge_forward	9
15_2799797_40_carver_flybridge_aft	9
16_2799797_40_carver_flybridge_port	10
17_2799797_40_carver_flybridge_starboard	10
18_2799797_40_carver_flybridge_helm1	10
19_2799797_40_carver_flybridge_helm2	10
20_2799797_40_carver_flybridge_helmseats1	10
21_2799797_40_carver_flybridge_helmseats2	10
22_2799797_40_carver_flybridge_seating	11
23_2799797_40_carver_sundeck	11
24_2799797_40_carver_flybridge_aftdeck_stairs	11
25_2799797_40_carver_aftdeck1	11
26_2799797_40_carver_aftdeck2	11
27_2799797_40_carver_aftdeck_port	11
28_2799797_40_carver_aftdeck_starboard	12
29_2799797_40_carver_aftdeck_forward	12
30_2799797_40_carver_aftdeck_flybridge_stairs	12
31_2799797_40_carver_swimplatform	12
32_2799797_40_carver_tender1	12
33_2799797_40_carver_tender2	12
34_2799797_40_carver_tender_davits	13
35_2799797_40_carver_salon_port	13
36_2799797_40_carver_salon_starboard	13
37_2799797_40_carver_salon_seating	13
38_2799797_40_carver_salon_tv	13

39_2799797_40_carver_galley	13
40_2799797_40_carver_galley_under_sole_storage	14
41_2799797_40_carver_master_stateroom	14
42_2799797_40_carver_master_stateroom_port	14
43_2799797_40_carver_master_stateroom_starboard	14
45_2799797_40_carver_master_stateroom_head	14
44_2799797_40_carver_master_stateroom_aft	14
47_2799797_40_carver_guest_stateroom_head	15
46_2799797_40_carver_guest_stateroom	15
48_2799797_40_carver_engine_room_access	15
49_2799797_40_carver_engine_room_forward	15
50_2799797_40_carver_engine_room_aft	15
51_2799797_40_carver_port_main_engine	15
52_2799797_40_carver_starboard_main_engine	16
CONTACTS	17
Contact details	17
Telephones	17
Office hours	17
Address	17

SPECIFICATIONS

Overview

My Dori III, a 40' Carver C40 Motoryacht from 2014, is kept in a fine state. Equipped with dual Cummins 380 HP main motors, an 11 kW generator from Kohler, and a bowthruster from Side-Power, she's reliably robust. She also includes a 2020 aluminum hull RIB tender from West Marine, complete with a 4 stroke 15 HP Mercury outboard, and an updated suite of Garmin electronics. A full Eisenglass flybridge enclosure, molded steps leading to each side deck and the flybridge from the aftdeck, as well as a 2 stateroom 2 head layout come too. Among the myriad of improvements made include a salon finished with laminate wood sole, and tile backsplash in every head, and so forth. My Dori III is fully ready for the Great Loop.

Basic Information

Category: Motor Yacht

Model Year: 2014

Year Built: 2014

Country: United States

Dimensions

LOA: 40' (12.19mm)

Beam: 13.5

Max Draft: 3' 6" (1.07mm)

Speed, Capacities and Weight

Water Capacity: 131 Gallons

Fuel Capacity: 350 Gal Gallons

Accommodations

Total Cabins: 2

Hull and Deck Information

Hull Material: Fiberglass

Engine Information

Engines: 1

Manufacturer: Cummins

PHOTOS

53_2799797_40_carver_racor_fuel_filters



54_2799797_40_carver_water_filtration_system



55_2799797_40_carver_water_heater



56_2799797_40_carver_electrical_panel1



57_2799797_40_carver_electrical_panel2



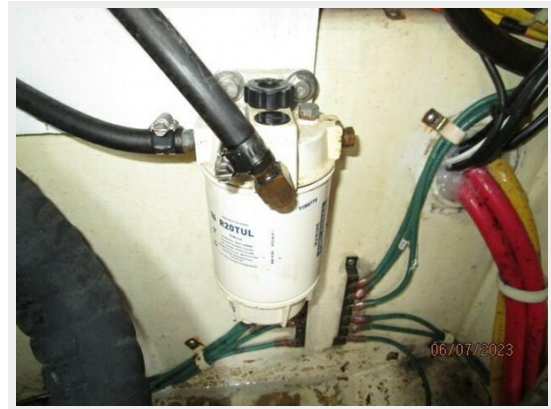
58_2799797_40_carver_generator_soundbox



59_2799797_40_carver_generator



60_2799797_40_carver_generator_racor_fuel_filter



61_2799797_40_carver_battery_chargers



1_2799797_40_carver_starboard_profile



3_2799797_40_carver_aft_profile



2_2799797_40_carver_port aft profile



4_2799797_40_carver_anchor



5_2799797_40_carver_anchor_windlass



6_2799797_40_carver_foredeck1



7_2799797_40_carver_foredeck2



8_2799797_40_carver_foredeck_aft



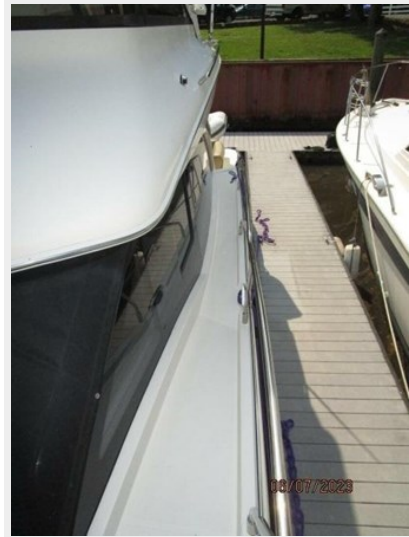
9_2799797_40_carver_foredeck_sunpads



10_2799797_40_carver_port_side_deck1



11_2799797_40_carver_port_side_deck2



12_2799797_40_carver_starboard_side_deck1



13_2799797_40_carver_starboard_side_deck2



14_2799797_40_carver_flybridge_forward



15_2799797_40_carver_flybridge_aft



16_2799797_40_carver_flybridge_port



17_2799797_40_carver_flybridge_starboard



18_2799797_40_carver_flybridge_helm1



19_2799797_40_carver_flybridge_helm2



20_2799797_40_carver_flybridge_helmseats1



21_2799797_40_carver_flybridge_helmseats2



22_2799797_40_carver_flybridge_seating



23_2799797_40_carver_sundeck



24_2799797_40_carver_flybridge_aftdeck_stairs



25_2799797_40_carver_aftdeck1



26_2799797_40_carver_aftdeck2



27_2799797_40_carver_aftdeck_port



28_2799797_40_carver_afdeck_starboard



29_2799797_40_carver_afdeck_forward



30_2799797_40_carver_afdeck_flybridge_stairs



31_2799797_40_carver_swimplatform



32_2799797_40_carver_tender1



33_2799797_40_carver_tender2



34_2799797_40_carver_tender_davits



35_2799797_40_carver_salon_port



36_2799797_40_carver_salon_starboard



37_2799797_40_carver_salon_seating



38_2799797_40_carver_salon_tv



39_2799797_40_carver_galley



40_2799797_40_carver_galley_under_sole_storage



41_2799797_40_carver_master_stateroom



42_2799797_40_carver_master_stateroom_port 43_2799797_40_carver_master_stateroom_starboard



45_2799797_40_carver_master_stateroom_head

44_2799797_40_carver_master_stateroom_aft



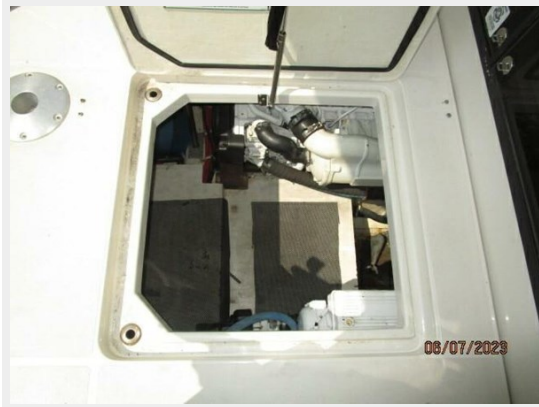
47_2799797_40_carver_guest_stateroom_head



46_2799797_40_carver_guest_stateroom



48_2799797_40_carver_engine_room_access



49_2799797_40_carver_engine_room_forward



50_2799797_40_carver_engine_room_aft



51_2799797_40_carver_port_main_engine



52_2799797_40_carver_starboard_main_engine



CONTACTS

Andrey Shestakov, leading yacht broker of the sales department of Shestakov Yacht Sales Inc. Shestakov Yacht Sales Inc., the official representative of the Miami/Fort Lauderdale FL headquarters.

Contact details

Email:
andrey@shestakovyachtsales.com

Web: shestakovyachtsales.com/en/

Telephones

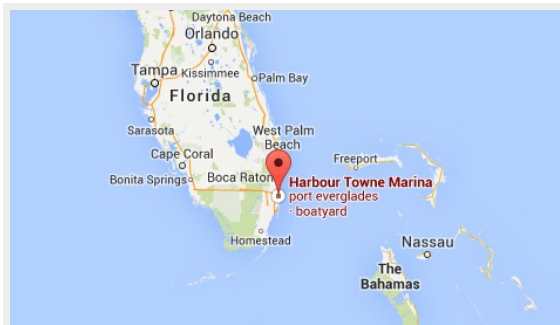
USA: **+1(954)274-4435**

Office hours

Monday – Saturday: **9:00 - 21:00 EDT**

Sunday: **closed**

Address



Harbour Towne Marina, 850 NE 3rd St,
STE 213, Dania, FL 33004