

MISS MARY — HATTERAS



Builder: HATTERAS

Year Built: 1986

Model: Aft Cabin

Price: \$149,000 USD

Location: United States

LOA: 43' 1" (13.13mm)

Beam: 14

Cruise Speed: 9 Knots Kts. (10 MPH)

Max Speed: 18 Knots Kts. (21 MPH)

Our experienced yacht broker, Andrey Shestakov, will help you choose and buy a yacht that best suits your needs **Miss Mary — HATTERAS** from our catalogue. Presently, at Shestakov Yacht Sales Inc., we have a wide variety of yachts available on our sale's list. We also work in close contact with all the big yacht manufacturers from all over the world.

If you would like to buy a yacht **Miss Mary — HATTERAS** or would like help answering any questions concerning purchasing, selling or chartering a yacht, please call **+1(954)274-4435**

TABLE OF CONTENTS

TABLE OF CONTENTS	2
SPECIFICATIONS	5
Overview	5
Basic Information	5
Dimensions	5
Speed, Capacities and Weight	5
Accommodations	6
Hull and Deck Information	6
Engine Information	6
PHOTOS	7
2	7
3	7
4	7
5	7
6	7
7	7
8	8
9	8
10	8
11	8
12	8
13	8
14	9
15	9
16	9
17	9
18	9
19	9

20	10
21	10
22	10
23	10
24	10
25	10
26	11
27	11
28	11
29	11
30	11
31	11
32	12
33	12
34	12
35	12
36	12
37	12
38	13
39	13
40	13
41	13
42	13
43	13
CONTACTS	14
Contact details	14
Telephones	14
Office hours	14
Address	14

SPECIFICATIONS

Overview

"The most popular aft cabin yacht in her class during the late 1980s, the Hatteras 43 Motor Yacht remains a solid choice for cruising couples who appreciate this yacht's timeless lines and quality construction." PowerBoatGuide 2018 Edition

"**Miss Mary**" is a beautiful example of the popular Hat 43 Motor Yacht. She features a beautiful interior with clean and fresh upholstery, a full bridge enclosure, new aft deck enclosure and she has a beautiful exterior finish as well!

Powered by **Newly Rebuilt Detroit 6-71 Diesels with LESS THAN 10 Hours** each other features include an Onan Generator, upgraded washer and dryer (not a combo), full-beam master with island queen berth, reverse cycle heat and AC and more!

Please call today for more information and to schedule a chance to see her for yourself!

Basic Information

Category: Aft Cabin

Sub Category: Aft Cabin

Model Year: 1986

Year Built: 1986

Country: United States

Dimensions

LOA: 43' 1" (13.13mm)

Beam: 14

Speed, Capacities and Weight

Cruise Speed: 9 Knots Kts. (10 MPH)

Max Speed: 18 Knots Kts. (21 MPH)

Water Capacity: 130 Gallons

Holding Tank: 90 Gal Gallons

Fuel Capacity: 375 Gal Gallons

Accommodations

Total Cabins: 2

Total Heads: 2

Hull and Deck Information

Hull Material: Fiberglass

Engine Information

Engines: 2

Manufacturer: Detroit Diesel

Engine Type: Inboard

Fuel Type: Diesel

PHOTOS

2



3



4



5



6



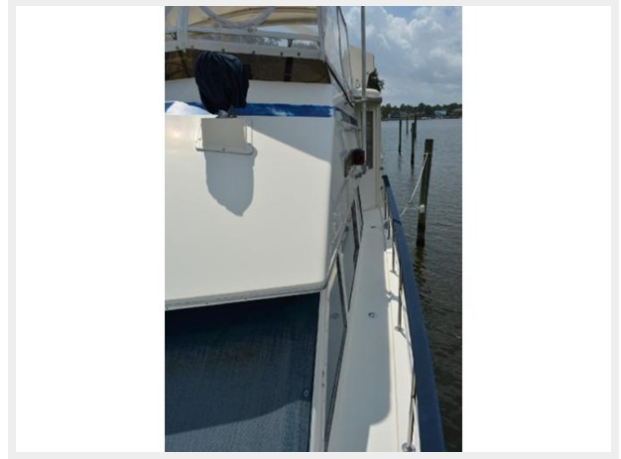
7



8



9



10



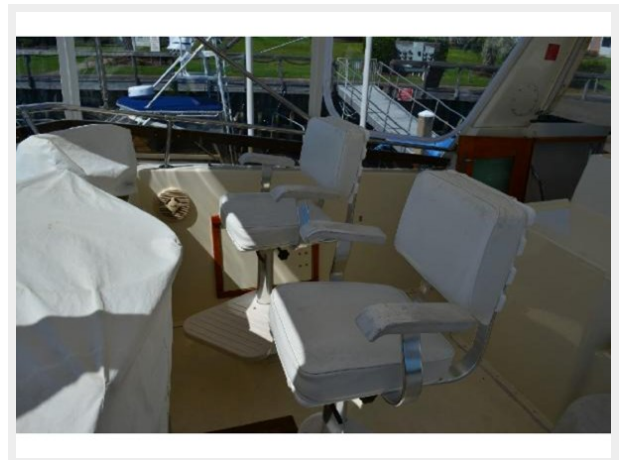
11



12



13



14



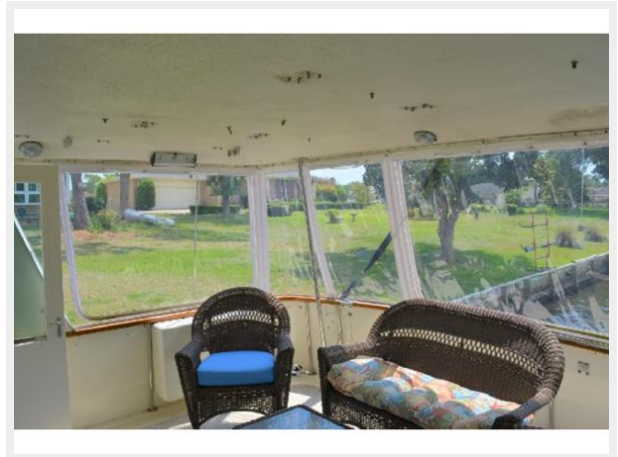
15



16



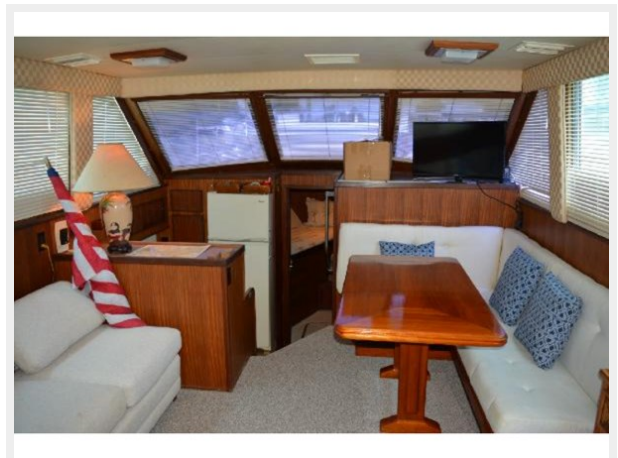
17



18



19



20



21



22



23



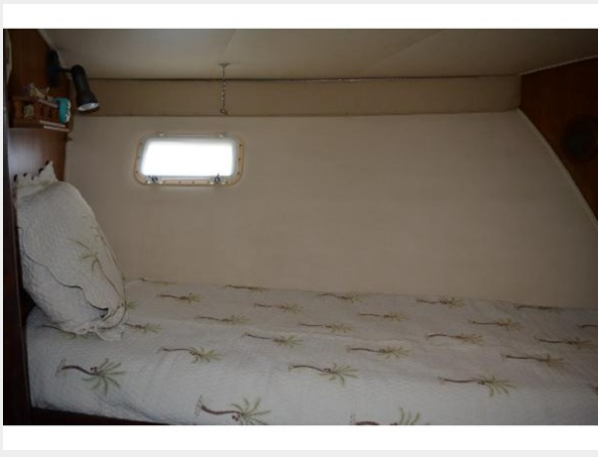
24



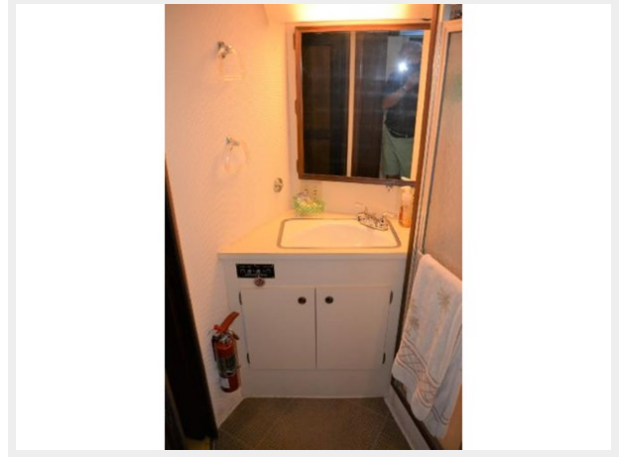
25



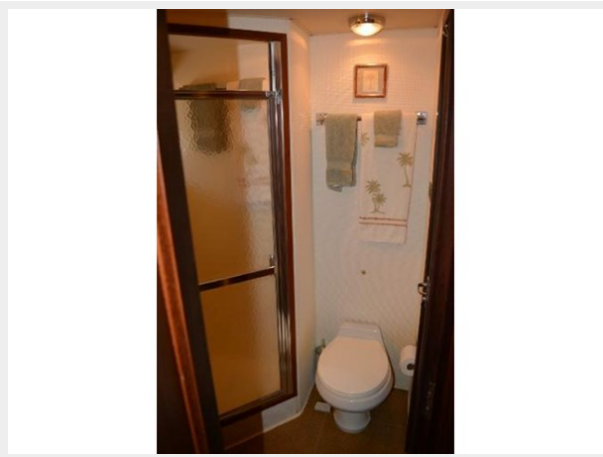
26



27



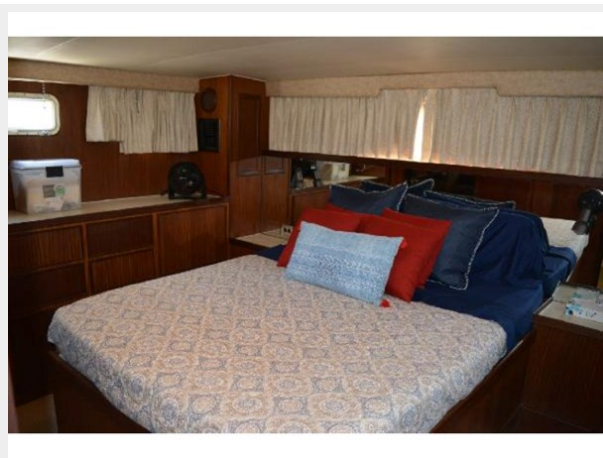
28



29



30



31



32



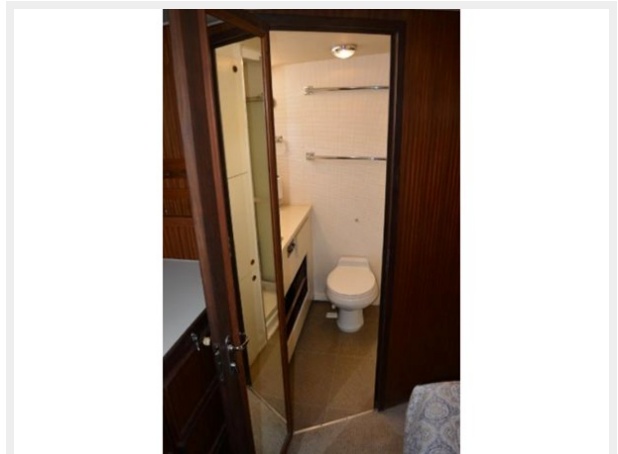
33



34



35



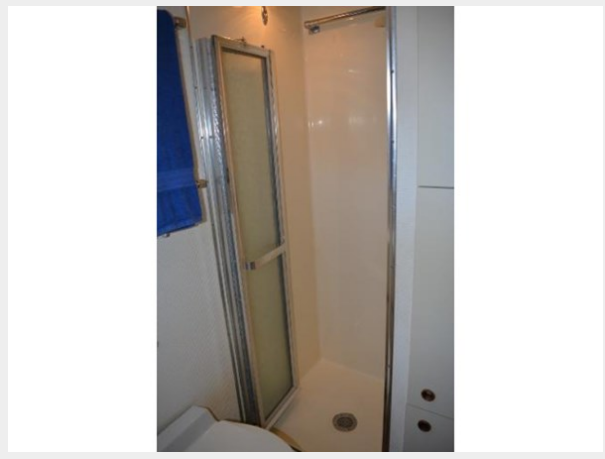
36



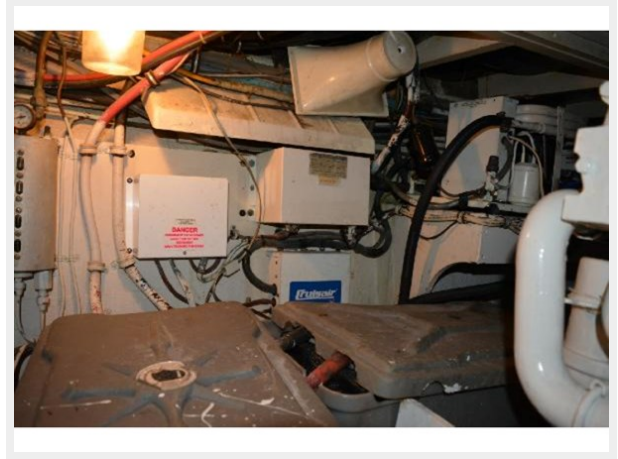
37



38



39



40



41



42



43



CONTACTS

Andrey Shestakov, leading yacht broker of the sales department of Shestakov Yacht Sales Inc. Shestakov Yacht Sales Inc., the official representative of the Miami/Fort Lauderdale FL headquarters.

Contact details

Email: andrey@shestakovyachtsales.com

Web: shestakovyachtsales.com/en/

Telephones

USA: +1(954)274-4435

Office hours

Monday – Saturday: **9:00 - 21:00** EDT

Sunday: **closed**

Address



Harbour Towne Marina, 850 NE 3rd St,
STE 213, Dania, FL 33004