

SEADATION — REGAL



Builder: REGAL

LOA: 53' (16.15m)

Year Built: 2016

Beam: 15.33

Model: Motor Yacht

Price: \$544,000 USD

Location: United States

Our experienced yacht broker, Andrey Shestakov, will help you choose and buy a yacht that best suits your needs **Seadation — REGAL** from our catalogue. Presently, at Shestakov Yacht Sales Inc., we have a wide variety of yachts available on our sale's list. We also work in close contact with all the big yacht manufacturers from all over the world.

If you would like to buy a yacht **Seadation — REGAL** or would like help answering any questions concerning purchasing, selling or chartering a yacht, please call **+1(954)274-4435**

TABLE OF CONTENTS

TABLE OF CONTENTS	2
SPECIFICATIONS	3
Overview	3
Basic Information	4
Dimensions	4
Speed, Capacities and Weight	4
Accommodations	4
Hull and Deck Information	4
Engine Information	5
PHOTOS	6
CONTACTS	11
Contact details	11
Telephones	11
Office hours	11
Address	11

SPECIFICATIONS

Overview

Sea-Dation is a must see! She was built with many upgrades including a SEAKEEPER. She has been professionally maintained with service records available. The retail build sheet was over 1.6m so if you are looking for a late model express cruiser, you MUST see this boat.

- **FLIR**
- **NEW TV'S**
- **NEW FUSION SOUND SYSTEM WITH JL AUDIO LED SPEAKERS**
- **SERVICES UP TO DATE**
- **RECENT DETAIL**
- **WIFI**
- **SEAKEEPER 9 GYRO**
- **JOYSTICK CONTROL WITH SKYHOOK**
- **TENDER GARAGE RACK SYSTEM**
- **AFT SEAT BASE B. STRIPE CLR ME**
- **ELECTRIC SHORE CORD REEL**
- **TOILET OVERBOARD DISCHARGE**
- **SEAKEEPER SYSTEM - GENERATOR UPGRADE**
- **FWD STATEROOM FLOOR: CLASSIC WALNUT**
- **AFT MASTER FLOOR: CLASSIC WALNUT**
- **FWD STATEROOM W / DBL BATH & BUN**
- **WASHER / DRYER**
- **FRONT & SIDE WINDOW COVERS**
- **FOREDECK LOUNGE & CANVAS COVER**
- **UNDERWATER LIGHTING - BLUE**
- **COOL COCKPIT**
- **COCKPIT PILLOW PACKAGE**
- **POWER HELM SEAT**
- **COCKPIT BLINDS W/W-S PRIVACY COVERS**
- **ELECTRIC PEDESTAL TABLE H.G. NO C. ROSE**
- **PATIO AWNING - SURESHADE**
- **PALM BEACH AFT PATIO ENCLOSURE**
- **AFT PATIO BAR WITH STOOLS & BENCH**
- **COCKPIT TV WITH ELECTRIC ACTUATOR**
- **PREMIUM SOUND PACKAGE**
- **FWD STATEROOM TV WITH DVD PLAYER**
- **SATELLITE TV KVH ANTENNA**
- **GARMIN DEPTH/FISH FINDER**
- **2ND GARMIN GPS MAP 8212 PLOTTER**
- **SATELLITE MARINE WEATHER - XM**

- **ELECTRIC WATER HOSE REELS (3)**
- **HIGH OUTPUT CHARGER & INVERTER**
- **POWER CONDITIONING BOOST TRANSFORMER**
- **CAMERA MONITORING SYSTEM**
- **GARMIN DRIFT ALARM**
- **ALMOST 7' OF HEADROOM**

Basic Information

Category: Motor Yacht

Model Year: 2016

Year Built: 2016

Country: United States

Dimensions

LOA: 53' (16.15mm)

Beam: 15.33

Speed, Capacities and Weight

Water Capacity: 100 Gallons

Holding Tank: 52 Gal Gallons

Fuel Capacity: 450 Gal Gallons

Accommodations

Total Cabins: 2

Hull and Deck Information

Hull Material: Fiberglass

Engine Information

Engines: 2

Manufacturer: Cummings

Engine Type: Inboard

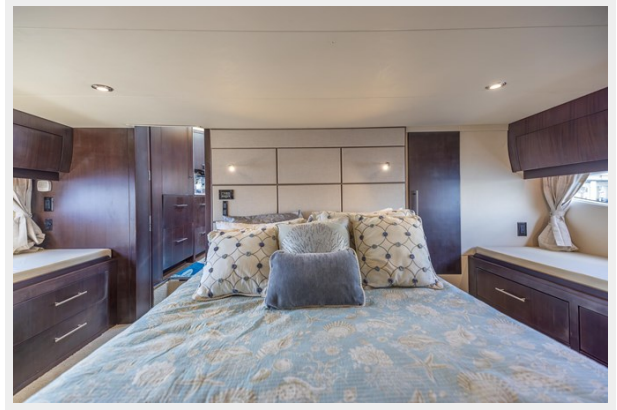
Fuel Type: Diesel

PHOTOS











CONTACTS

Andrey Shestakov, leading yacht broker of the sales department of Shestakov Yacht Sales Inc. Shestakov Yacht Sales Inc., the official representative of the Miami/Fort Lauderdale FL headquarters.

Contact details

Email: andrey@shestakovyachtsales.com

Web: shestakovyachtsales.com/en/

Telephones

USA: +1(954)274-4435

Office hours

Monday – Saturday: **9:00 - 21:00** EDT

Sunday: **closed**

Address



Harbour Towne Marina, 850 NE 3rd St,
STE 213, Dania, FL 33004