

2018 PRINCESS V60 — PRINCESS YACHTS



Builder: PRINCESS YACHTS

Year Built: 2018

Model: Motor Yacht

Price: PRICE ON APPLICATION

Location: Turkey

LOA: 62' 11" (19.18mm)

Beam: 16.08

Min Draft: 5' 3" (1.58mm)

Max Draft: 5' 5" (1.65mm)

Cruise Speed: 22 Knots Kts. (25 MPH)

Max Speed: 32 Knots Kts. (37 MPH)

Our experienced yacht broker, Andrey Shestakov, will help you choose and buy a yacht that best suits your needs 2018 Princess V60 — PRINCESS YACHTS from our catalogue. Presently, at Shestakov Yacht Sales Inc., we have a wide variety of yachts available on our sale's list. We also work in close contact with all the big yacht manufacturers from all over the world.

If you would like to buy a yacht 2018 Princess V60 — PRINCESS YACHTS or would like help answering any questions concerning purchasing, selling or chartering a yacht, please call +1(954)274-4435

TABLE OF CONTENTS

TABLE OF CONTENTS	2
SPECIFICATIONS	3
Overview	3
Basic Information	3
Dimensions	3
Speed, Capacities and Weight	3
Accommodations	4
Hull and Deck Information	4
Engine Information	4
PHOTOS	5
CONTACTS	12
Contact details	12
Telephones	12
Office hours	12
Address	12

SPECIFICATIONS

Overview

Great opportunity available now from first owner .The elegant lines of the all-new V60 encapsulate an expansive and sociable cockpit arrangement with a generous seating area and fully equipped wetbar with barbecue. When at anchor, her electro-hydraulic bathing platform creates a convenient launch system for a 3.3m tender, a jet ski, or simply a secluded swimming platform. With a MAN V8 1200 engine taking you up to 38 knots, she is an altogether adventurous craft. Forward on her main deck, a retractable sunroof reveals the skies above at the touch of a button. Her sociable galley aft arrangement features an open-plan dining area with sliding doors and a fully opening window leading out to the cockpit. Below deck, six guests are comfortably accommodated across an ensuite full-beam owner's stateroom and two further guest cabins with the option of an additional crew cabin aft.

Basic Information

Category: Motor Yacht

Model Year: 2018

Year Built: 2018

Country: Turkey

Dimensions

LOA: 62' 11" (19.18mm)

Beam: 16.08

Min Draft: 5' 3" (1.58mm)

Max Draft: 5' 5" (1.65mm)

Speed, Capacities and Weight

Cruise Speed: 22 Knots Kts. (25 MPH)

Cruise Speed Range: 250

Max Speed: 32 Knots Kts. (37 MPH)

Max Speed Range: 190 Kts.

Gross Tonnage: 37.19 Pounds

Water Capacity: 132 Gallons

Holding Tank: 39.6 Gal Gallons

Fuel Capacity: 715 Gal Gallons

Accommodations

Total Cabins: 3

Total Berths: 6

Sleeps: 6

Total Heads: 3

Crew Cabin: 2

Crew Berths: 2

Crew Heads: 1

Hull and Deck Information

Hull Material: Fiberglass

Deck Material: Teak

Hull Configuration: Deep Vee

Hull Designer: Bernard Olesinski

Interior Designer: Princess

Engine Information

Engines: 2

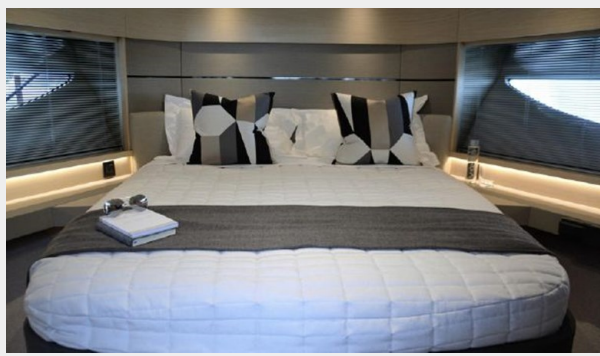
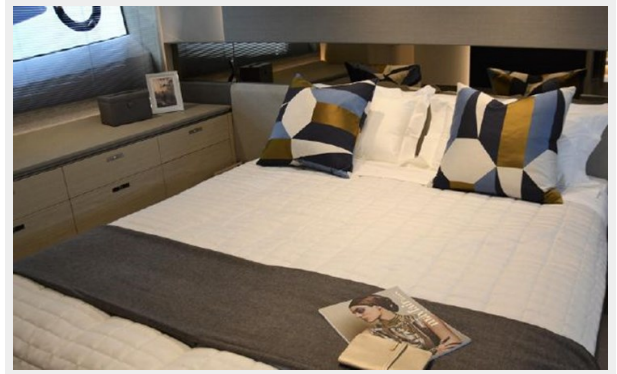
Manufacturer: MAN

Engine Type: Inboard

Fuel Type: Diesel

PHOTOS



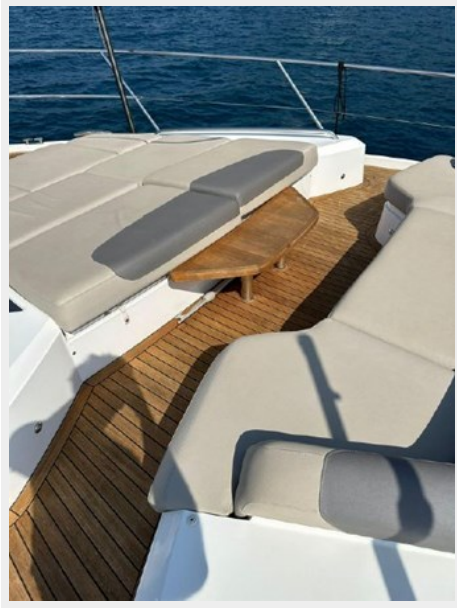












CONTACTS

Andrey Shestakov, leading yacht broker of the sales department of Shestakov Yacht Sales Inc. Shestakov Yacht Sales Inc., the official representative of the Miami/Fort Lauderdale FL headquarters.

Contact details

Email: andrey@shestakovyachtsales.com

Web: shestakovyachtsales.com/en/

Telephones

USA: +1(954)274-4435

Office hours

Monday – Saturday: **9:00 - 21:00** EDT

Sunday: **closed**

Address



Harbour Towne Marina, 850 NE 3rd St,
STE 213, Dania, FL 33004