

2016 LEOPARD 48 — LEOPARD



Builder: LEOPARD

Year Built: 2016

Model: Catamaran

Price: PRICE ON APPLICATION

Location: Israel

LOA: 48' 5" (14.76mm)

Beam: 25.08

Max Draft: 4' 10" (1.47mm)

Our experienced yacht broker, Andrey Shestakov, will help you choose and buy a yacht that best suits your needs 2016 Leopard 48 — LEOPARD from our catalogue. Presently, at Shestakov Yacht Sales Inc., we have a wide variety of yachts available on our sale's list. We also work in close contact with all the big yacht manufacturers from all over the world.

If you would like to buy a yacht 2016 Leopard 48 — LEOPARD or would like help answering any questions concerning purchasing, selling or chartering a yacht, please call +1(954)274-4435

TABLE OF CONTENTS

TABLE OF CONTENTS	2
SPECIFICATIONS	3
Overview	3
Basic Information	3
Dimensions	3
Accommodations	4
Hull and Deck Information	4
Engine Information	4
PHOTOS	5
CONTACTS	9
Contact details	9
Telephones	9
Office hours	9
Address	9

SPECIFICATIONS

Overview

A master version from first owner in turn key condition, after winter maintenance. Very low usage. Equipped with all options are necessary for long journey. Please contact for full information

Manufacturer Provided Description

Leopard Catamarans proudly introduces the award winning Leopard 48. Focused on blue water performance and comfortable living, the Leopard 48 is an exciting addition to the Leopard line. EXTERIOR

Like the award winning Leopard 44, the Leopard 48 features a large forward cockpit with direct access from the saloon, unique to the Leopard range. Other exterior bonuses include a large and open aft cockpit with cockpit table. A raised helm station, providing excellent panoramic visibility, allows for excellent blue water maneuverability. INTERIOR

The interior of the Leopard 48 provides both beauty and practicality. The galley comes equipped with top-of-the-line appliances, ample prepping space, and so much more. This catamaran also offers a plethora of interior space. The plush interior makes sailing not only fun, but also incredibly comfortable. Her modern lines and open floor plan set a new standard for the modern cruising catamaran.

Basic Information

Category: Catamaran

Model Year: 2016

Year Built: 2016

Country: Israel

Dimensions

LOA: 48' 5" (14.76mm)

LWL: 45' 5" (13.84mm)

Beam: 25.08

Max Draft: 4' 10" (1.47mm)

Accommodations

Total Heads: 3

Hull and Deck Information

Hull Material: Fiberglass

Engine Information

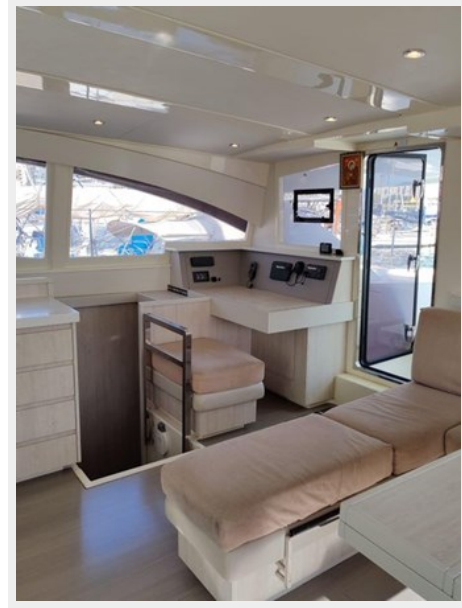
Engines: 2

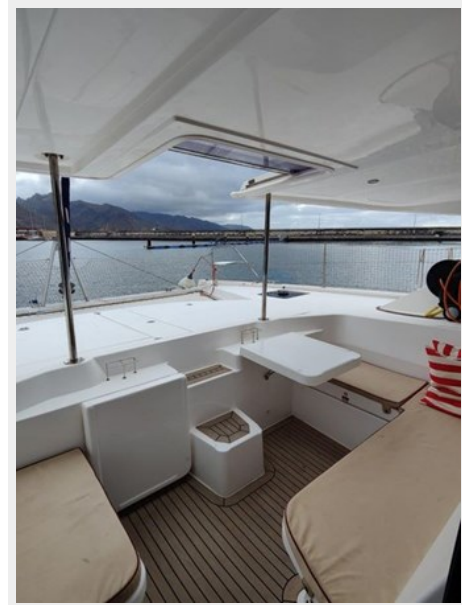
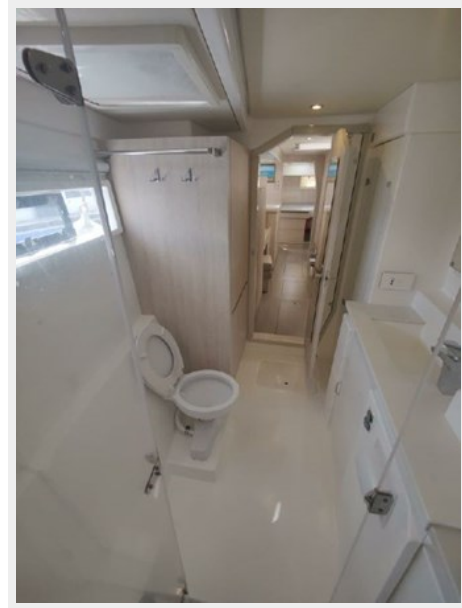
Manufacturer: Yanmar

Engine Type: Sail Drive

Fuel Type: Diesel

PHOTOS









CONTACTS

Andrey Shestakov, leading yacht broker of the sales department of Shestakov Yacht Sales Inc. Shestakov Yacht Sales Inc., the official representative of the Miami/Fort Lauderdale FL headquarters.

Contact details

Email: andrey@shestakovyachtsales.com

Web: shestakovyachtsales.com/en/

Telephones

USA: +1(954)274-4435

Office hours

Monday – Saturday: **9:00 - 21:00** EDT

Sunday: **closed**

Address



Harbour Towne Marina, 850 NE 3rd St,
STE 213, Dania, FL 33004