

CARPE DIEM — INTERMARINE



Builder: INTERMARINE

Year Built: 2000

Model: Raised Pilothouse

Price: PRICE ON APPLICATION

Location: United States

LOA: 95' 4" (29.06mm)

Beam: 22

Min Draft: 5' 4" (1.63mm)

Max Draft: 5' 6" (1.68mm)

Cruise Speed: 15 Knots Kts. (17 MPH)

Max Speed: 18 Knots Kts. (21 MPH)

Our experienced yacht broker, Andrey Shestakov, will help you choose and buy a yacht that best suits your needs **CARPE DIEM — INTERMARINE** from our catalogue. Presently, at Shestakov Yacht Sales Inc., we have a wide variety of yachts available on our sale's list. We also work in close contact with all the big yacht manufacturers from all over the world.

If you would like to buy a yacht **CARPE DIEM — INTERMARINE** or would like help answering any questions concerning purchasing, selling or chartering a yacht, please call **+1(954)274-4435**

TABLE OF CONTENTS

TABLE OF CONTENTS	2
SPECIFICATIONS	5
Overview	5
Basic Information	5
Dimensions	5
Speed, Capacities and Weight	5
Accommodations	5
Hull and Deck Information	6
Engine Information	6
PHOTOS	7
Salon Looking Aft	7
Salon Looking Forward	7
Salon Area	7
Salon Bar	7
Salon Bar	7
Salon Forward	7
Dining Area to Port	8
Dining Area to Stbd.	8
Dining Table	8
Dining Table	8
Glass Storage	8
Dinnerware Storage	8
Wine Cooler	9
Port Side from Salon	9
Accommodations Steps	9
Lower Accommodations Foyer	9
Accommodations Foyer Laundry	10
Master Looking Aft	10

Master Looking to Port	10
Master Looking Stbd.	10
Master Looking Forward	10
Master Port Side Head	10
Master Tub/Shower	11
Master Stbd. Side Head	11
VIP Looking Aft	11
VIP Looking Fwd.	11
VIP	11
VIP Head	11
Twin Cabin Looking Aft	12
Twin Cabin Looking Fwd.	12
Twin Head	12
Day Head	12
Galley	12
Galley	12
Breakfast Bar	13
Galley Dining	13
Pilothouse Stairs	13
Helm	13
Helm	13
Anchor Detail	13
Bow Area	14
Windlass	14
Wide Side Deck	14
Marquipt with Offset	14
Lazarette Washer/Dryer	14
Swim Platform	14
Lazarette Electric Panel	15

Battery Switches	15
Beefy Rudder Stock	15
Engine Room Looking Forward	15
Port Engine	15
Port Engine	15
Stbd. Engine	16
Stbd. V-Drive	16
Steering System	16
Fuel Transfer System	16
New A/C Plant	16
Workbench	16
Carpe Diem	17
CONTACTS	18
Contact details	18
Telephones	18
Office hours	18
Address	18

SPECIFICATIONS

Overview

N/A

Basic Information

Category: Raised Pilothouse

Sub Category: Raised Pilothouse

Model Year: 2001

Year Built: 2000

Country: United States

Dimensions

LOA: 95' 4" (29.06mm)

Beam: 22

Min Draft: 5' 4" (1.63mm)

Max Draft: 5' 6" (1.68mm)

Speed, Capacities and Weight

Cruise Speed: 15 Knots Kts. (17 MPH)

Max Speed: 18 Knots Kts. (21 MPH)

Gross Tonnage: 166 Pounds

Water Capacity: 1000 Gallons

Holding Tank: 600 Gal Gallons

Fuel Capacity: 3500 Gal Gallons

Accommodations

Total Cabins: 3

Total Berths: 3

Total Heads: 7

Hull and Deck Information

Hull Material: Fiberglass

Deck Material: Teak

Hull Configuration: Semi Vee

Exterior Designer: Michael Peters

Interior Designer: Pavlik Design

Engine Information

Engines: 2

Manufacturer: MTU

Engine Type: Inboard

Fuel Type: Diesel

PHOTOS

Salon Looking Aft



Salon Looking Forward



Salon Area



Salon Bar



Salon Bar



Salon Forward



Dining Area to Port



Dining Area to Stbd.



Dining Table



Dining Table



Dinnerware Storage



Glass Storage



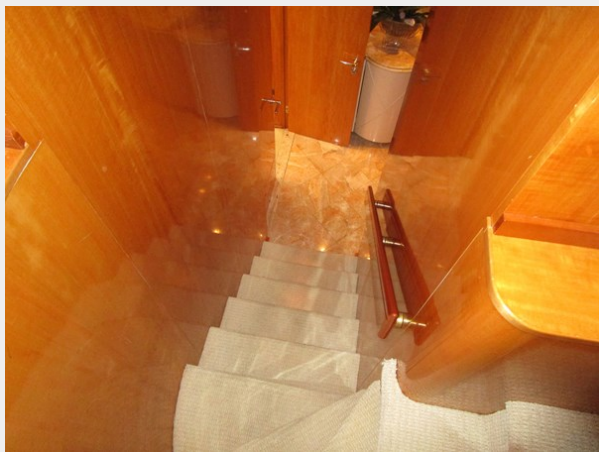
Port Side from Salon



Wine Cooler



Accommodations Steps



Lower Accommodations Foyer



Accommodations Foyer Laundry



Master Looking Aft



Master Looking to Port



Master Looking Stbd.



Master Looking Forward



Master Port Side Head



Master Tub/Shower



Master Stbd. Side Head



VIP Looking Aft



VIP Looking Fwd.



VIP



VIP Head



Twin Cabin Looking Aft



Twin Cabin Looking Fwd.



Twin Head



Day Head



Galley



Galley



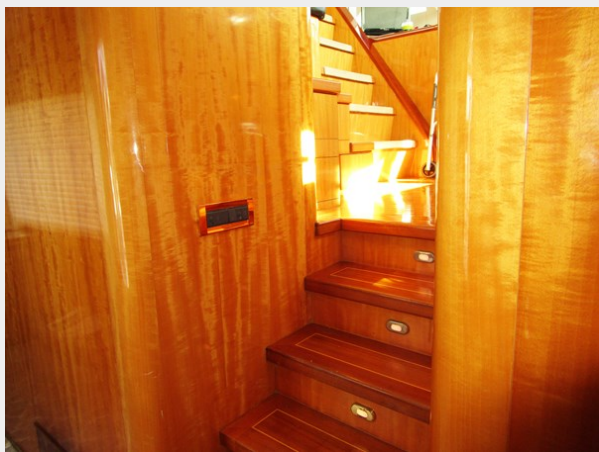
Breakfast Bar



Galley Dining



Pilothouse Stairs



Helm



Helm



Anchor Detail



Bow Area



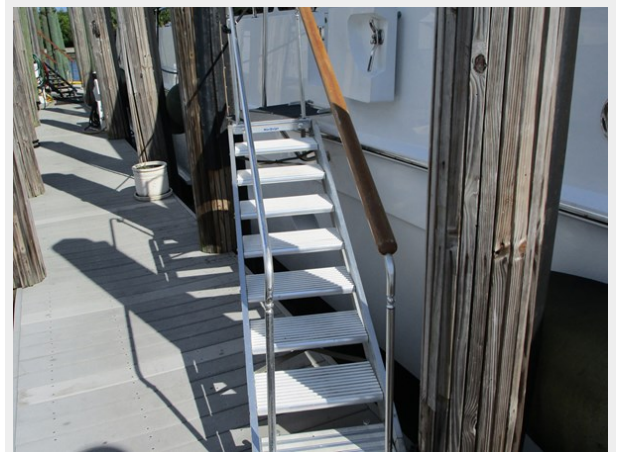
Windlass



Wide Side Deck



Marquipt with Offset



Lazarette Washer/Dryer



Swim Platform



Lazarette Electric Panel



Battery Switches



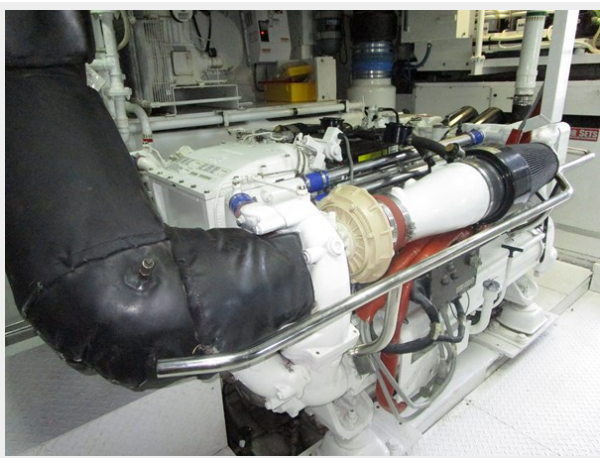
Beefy Rudder Stock



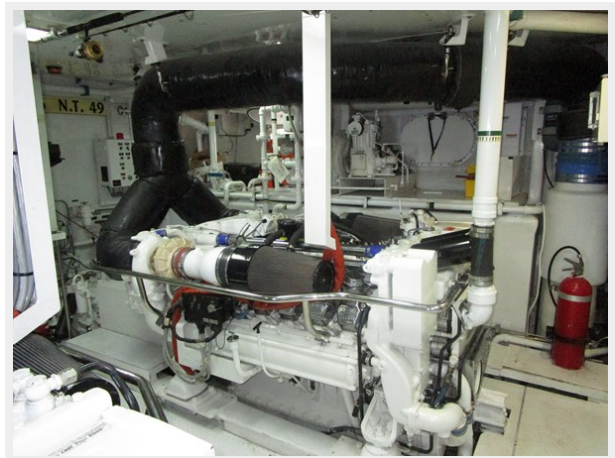
Engine Room Looking Forward



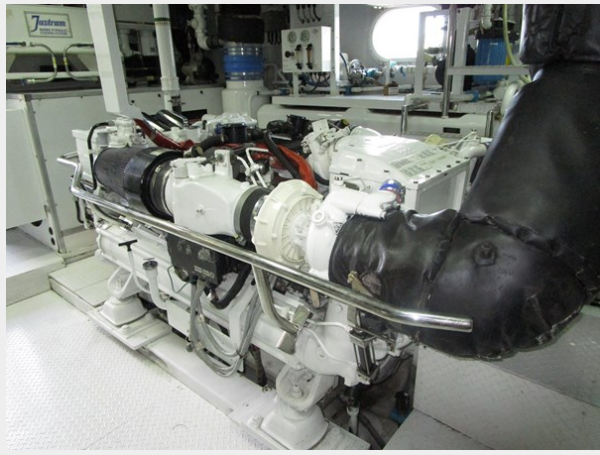
Port Engine



Port Engine



Stbd. Engine



Stbd. V-Drive



Steering System



Fuel Transfer System



New A/C Plant



Workbench



Carpe Diem



CONTACTS

Andrey Shestakov, leading yacht broker of the sales department of Shestakov Yacht Sales Inc. Shestakov Yacht Sales Inc., the official representative of the Miami/Fort Lauderdale FL headquarters.

Contact details

Email: andrey@shestakovyachtsales.com

Web: shestakovyachtsales.com/en/

Telephones

USA: +1(954)274-4435

Office hours

Monday – Saturday: **9:00 - 21:00** EDT

Sunday: **closed**

Address



Harbour Towne Marina, 850 NE 3rd St,
STE 213, Dania, FL 33004