

## JOHN W — BRAY YACHT DESIGN



**Builder:** BRAY YACHT DESIGN

**Year Built:** 2000

**Model:** trawler

**Price:** \$449,500 USD

**Location:** United States

**LOA:** 47' (14.33m)

**Beam:** 16

**Min Draft:** 4' (1.22m)

Our experienced yacht broker, Andrey Shestakov, will help you choose and buy a yacht that best suits your needs **John W — BRAY YACHT DESIGN** from our catalogue. Presently, at Shestakov Yacht Sales Inc., we have a wide variety of yachts available on our sale's list. We also work in close contact with all the big yacht manufacturers from all over the world.

If you would like to buy a yacht **John W — BRAY YACHT DESIGN** or would like help answering any questions concerning purchasing, selling or chartering a yacht, please call **+1(954)274-4435**

# TABLE OF CONTENTS

TABLE OF CONTENTS	2
SPECIFICATIONS	6
Overview	6
Basic Information	6
Dimensions	6
Speed, Capacities and Weight	6
Accommodations	6
Hull and Deck Information	6
Engine Information	6
PHOTOS	7
31_2789309_bray_passagemaker_salon_table2	7
30_2789309_bray_passagemaker_salon_table1	7
32_2789309_bray_passagemaker_salon_settee1	7
33_2789309_bray_passagemaker_salon_settee2	7
34_2789309_bray_passagemaker_salon_entertainment_cabinet	7
35_2789309_bray_passagemaker_galley1	7
36_2789309_bray_passagemaker_galley2	7
37_2789309_bray_passagemaker_pilothouse	7
38_2789309_bray_passagemaker_pilothouse_port	8
39_2789309_bray_passagemaker_pilothouse_starboard	8
40_2789309_bray_passagemaker_pilothouse_helm	8
41_2789309_bray_passagemaker_pilothouse_electronics1	8
42_2789309_bray_passagemaker_pilothouse_electronics2	8
43_2789309_bray_passagemaker_pilothouse_electronics3	8
45_2789309_bray_passagemaker_web_based_camera_system	8
44_2789309_bray_passagemaker_pilothouse_laptop	8
46_2789309_bray_passagemaker_pilothouse_helmseat	9
47_2789309_bray_passagemaker_pilothouse_benchseat1	9

---

48_2789309_bray_passagemaker_pilothouse_benchseat2	9
49_2789309_bray_passagemaker_master_stateroom	9
50_2789309_bray_passagemaker_master_stateroom_port	9
51_2789309_bray_passagemaker_master_stateroom_starboard	9
53_2789309_bray_passagemaker_master_stateroom_head	9
52_2789309_bray_passagemaker_master_stateroom_forward	9
54_2789309_bray_passagemaker_master_stateroom_shower	10
55_2789309_bray_passagemaker_mid_gust_stateroom	10
56_2789309_bray_passagemaker_mid_guest_stateroom_port	10
57_2789309_bray_passagemaker_mid_guest_stateroom_starboard	10
58_2789309_bray_passagemaker_forward_guest_stateroom	10
59_2789309_bray_passagemaker_guest_head	10
60_2789309_bray_passagemaker_washer_dryer	10
61_2789309_bray_passagemaker_engine_room	10
62_2789309_bray_passagemaker_main_engine1	11
63_2789309_bray_passagemaker_main_engine2	11
64_2789309_bray_passagemaker_pilothouse_engine_panel	11
65_2789309_bray_passagemaker_fuel_filters	11
66_2789309_bray_passagemaker_fuel_polishing_system	11
67_2789309_bray_passagemaker_port_sea_chest	11
68_2789309_bray_passagemaker_fuel_manifold	11
69_2789309_bray_passagemaker_raw_water_manifold	11
70_2789309_bray_passagemaker_bilge_manifold	12
71_2789309_bray_passagemaker_water_maker	12
73_2789309_bray_passagemaker_pilothouse_electrical_panel2	12
72_2789309_bray_passagemaker_pilothouse_electrical_panel1	12
74_2789309_bray_passagemaker_engine_room_electrical_panel	12
75_2789309_bray_passagemaker_generator1	12
76_2789309_bray_passagemaker_generator2	12

---

---

77_2789309_bray_passagemaker_inverter	12
79_2789309_bray_passagemaker_battery_charger2	13
78_2789309_bray_passagemaker_battery_charger1	13
80_2789309_bray_passagemaker_battery_bank1	13
81_2789309_bray_passagemaker_battery_bank2	13
82_2789309_bray_passagemaker_hauled_out	13
83_2789309_bray_passagemaker_brochure_drawings	13
1_2789309_bray_passagemaker_starboard_forward_profile	13
0_2789309_bray_passagemaker_port_profile	13
3_2789309_bray_passagemaker_starboard_profile	14
2_2789309_bray_passagemaker_port_aft_profile	14
5_2789309_bray_passagemaker_forward_profile1	14
4_2789309_bray_port_forward_profile	14
7_2789309_bray_passagemaker_aft_profile	14
6_2789309_bray_passagemaker_forward_profile2	14
8_2789309_bray_passagemaker_foredeck	14
9_2789309_bray_passagemaker_foredeck_aft	14
11_2789309_bray_passagemaker_port_side_deck	15
10_2789309_bray_passagemaker_portuguse_bridge	15
12_2789309_bray_passagemaker_starboard_side_deck	15
13_2789309_bray_passagemaker_flybridge_forward	15
14_2789309_bray_passagemaker_flybridge_aft1	15
15_2789309_bray_passagemaker_flybridge_aft2	15
16_2789309_bray_passagemaker_flybridge_helm	15
17_2789309_bray_passagemaker_flybridge_helmseat	15
18_2789309_bray_passagemaker_mast	16
19_2789309_bray_passagemaker_boom_tender_davit	16
20_2789309_bray_passagemaker_davit_controls	16
21_2789309_bray_passagemaker_tender1	16

---

---

22_2789309_bray_passagemaker_tender2	16
23_2789309_bray_passagemaker_aftdeck	16
24_2789309_bray_passagemaker_aftdeck_starboard	16
25_2789309_bray_passagemaker_aftdeck_starboard_forward	16
26_2789309_bray_passagemaker_aftdeck_port_forward	17
27_2789309_bray_passagemaker_salon_forward	17
28_2789309_bray_passagemaker_salon_aft	17
29_2789309_bray_passagemaker_salon_port_seating	17
CONTACTS	18
Contact details	18
Telephones	18
Office hours	18
Address	18

---

## SPECIFICATIONS

---

### Overview

---

John W is a 2000 47' Karvi trawler designed by Patrick Bray of award winning Bray Yacht Design and built by Fred Wahl Marine Construction in British Columbia, Canada. The seller's lengthy commercial vessel background also contributed to the design and construction. John W offers a single Caterpillar 3208 NA 210 HP main engine, Kubota generator, Trace Engineering inverter, Neverdie L13 house battery bank, Scepter watermaker, Hurricane diesel fired heating system and water heater, fuel polishing system, bowthruster, passive stabilizer keels, dry stack exhaust, keel cooler, 3 stateroom, 2 head layout and a full-beam master stateroom. John W is fully Great Loop or bluewater capable.

Located in Hertford, North Carolina.

### Basic Information

---

**Category:** trawler

**Model Year:** 2000

**Year Built:** 2000

**Country:** United States

### Dimensions

---

**LOA:** 47' (14.33mm)

**Beam:** 16

**Min Draft:** 4' (1.22mm)

### Speed, Capacities and Weight

---

**Water Capacity:** 300 Gallons

**Fuel Capacity:** 1500 Gal Gallons

### Accommodations

---

**Total Cabins:** 3

### Hull and Deck Information

---

**Hull Material:** Fiberglass

### Engine Information

---

**Engines:** 1

**Manufacturer:** Caterpillar

# PHOTOS

30\_2789309\_bray\_passagemaker\_salon\_table1



31\_2789309\_bray\_passagemaker\_salon\_table2



32\_2789309\_bray\_passagemaker\_salon\_settee1



33\_2789309\_bray\_passagemaker\_salon\_settee2



34\_2789309\_bray\_passagemaker\_salon\_entertainment\_cabinet



35\_2789309\_bray\_passagemaker\_galley1



36\_2789309\_bray\_passagemaker\_galley2



37\_2789309\_bray\_passagemaker\_pilothouse





38\_2789309\_bray\_passagemaker\_pilothouse\_port



39\_2789309\_bray\_passagemaker\_pilothouse\_starboard



40\_2789309\_bray\_passagemaker\_pilothouse\_helm



41\_2789309\_bray\_passagemaker\_pilothouse\_electronics1



42\_2789309\_bray\_passagemaker\_pilothouse\_electronics2



43\_2789309\_bray\_passagemaker\_pilothouse\_electronics3



44\_2789309\_bray\_passagemaker\_pilothouse\_laptop



45\_2789309\_bray\_passagemaker\_web\_based\_camera\_system





46\_2789309\_bray\_passagemaker\_pilothouse\_helmseat



47\_2789309\_bray\_passagemaker\_pilothouse\_benchseat1



48\_2789309\_bray\_passagemaker\_pilothouse\_benchseat2



49\_2789309\_bray\_passagemaker\_master\_stateroom



50\_2789309\_bray\_passagemaker\_master\_stateroom\_port



51\_2789309\_bray\_passagemaker\_master\_stateroom\_starboard



52\_2789309\_bray\_passagemaker\_master\_stateroom\_forward



53\_2789309\_bray\_passagemaker\_master\_stateroom\_head



54\_2789309\_bray\_passagemaker\_master\_stateroom\_shower



55\_2789309\_bray\_passagemaker\_mid\_gust\_stateroom



56\_2789309\_bray\_passagemaker\_mid\_guest\_stateroom\_port 57\_2789309\_bray\_passagemaker\_mid\_guest\_stateroom\_starboard



58\_2789309\_bray\_passagemaker\_forward\_guest\_stateroom



59\_2789309\_bray\_passagemaker\_guest\_head



60\_2789309\_bray\_passagemaker\_washer\_dryer



61\_2789309\_bray\_passagemaker\_engine\_room





62\_2789309\_bray\_passagemaker\_main\_engine1



63\_2789309\_bray\_passagemaker\_main\_engine2



64\_2789309\_bray\_passagemaker\_pilothouse\_engine\_panel



65\_2789309\_bray\_passagemaker\_fuel\_filters



66\_2789309\_bray\_passagemaker\_fuel\_polishing\_system



67\_2789309\_bray\_passagemaker\_port\_sea\_chest



68\_2789309\_bray\_passagemaker\_fuel\_manifold



69\_2789309\_bray\_passagemaker\_raw\_water\_manifold



70\_2789309\_bray\_passagemaker\_bilge\_manifold



71\_2789309\_bray\_passagemaker\_water\_maker



73\_2789309\_bray\_passagemaker\_pilothouse\_electrical\_panel2

72\_2789309\_bray\_passagemaker\_pilothouse\_electrical\_panel1



74\_2789309\_bray\_passagemaker\_engine\_room\_electrical\_panel

75\_2789309\_bray\_passagemaker\_generator1



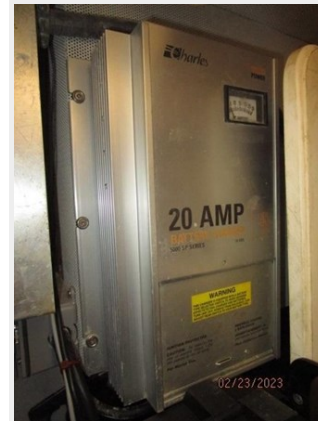
76\_2789309\_bray\_passagemaker\_generator2

77\_2789309\_bray\_passagemaker\_inverter





79\_2789309\_bray\_passagemaker\_battery\_charger2



78\_2789309\_bray\_passagemaker\_battery\_charger1



80\_2789309\_bray\_passagemaker\_battery\_bank1



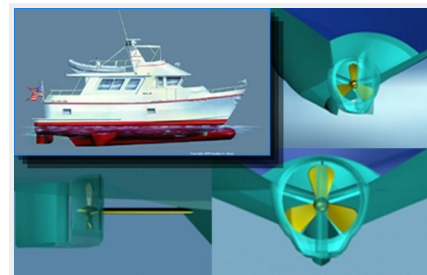
81\_2789309\_bray\_passagemaker\_battery\_bank2



82\_2789309\_bray\_passagemaker\_hauled\_out



83\_2789309\_bray\_passagemaker\_brochure\_drawings



0\_2789309\_bray\_passagemaker\_port\_profile



1\_2789309\_bray\_passagemaker\_starboard\_forward\_profile



2\_2789309\_bray\_passagemaker\_port\_aft\_profile



3\_2789309\_bray\_passagemaker\_starboard\_profile



4\_2789309\_bray\_port\_forward\_profile



5\_2789309\_bray\_passagemaker\_forward\_profile1



6\_2789309\_bray\_passagemaker\_forward\_profile2



7\_2789309\_bray\_passagemaker\_aft\_profile



8\_2789309\_bray\_passagemaker\_foredeck



9\_2789309\_bray\_passagemaker\_foredeck\_aft





10\_2789309\_bray\_passagemaker\_portuguse\_bridge



11\_2789309\_bray\_passagemaker\_port\_side\_deck



12\_2789309\_bray\_passagemaker\_starboard\_side\_deck



13\_2789309\_bray\_passagemaker\_flybridge\_forward



14\_2789309\_bray\_passagemaker\_flybridge\_aft1



15\_2789309\_bray\_passagemaker\_flybridge\_aft2



16\_2789309\_bray\_passagemaker\_flybridge\_helm



17\_2789309\_bray\_passagemaker\_flybridge\_helmseat



18\_2789309\_bray\_passagemaker\_mast



19\_2789309\_bray\_passagemaker\_boom\_tender\_davit



20\_2789309\_bray\_passagemaker\_davit\_controls



21\_2789309\_bray\_passagemaker\_tender1



22\_2789309\_bray\_passagemaker\_tender2



23\_2789309\_bray\_passagemaker\_aftdeck



24\_2789309\_bray\_passagemaker\_aftdeck\_starboard



25\_2789309\_bray\_passagemaker\_aftdeck\_starboard\_forward



26\_2789309\_bray\_passagemaker\_aftdeck\_port\_forward



27\_2789309\_bray\_passagemaker\_salon\_forward



28\_2789309\_bray\_passagemaker\_salon\_aft



29\_2789309\_bray\_passagemaker\_salon\_port\_seating



---

## CONTACTS

---

Andrey Shestakov, leading yacht broker of the sales department of Shestakov Yacht Sales Inc. Shestakov Yacht Sales Inc., the official representative of the Miami/Fort Lauderdale FL headquarters.

### Contact details

---

Email:  
[andrey@shestakovyachtsales.com](mailto:andrey@shestakovyachtsales.com)

Web: [shestakovyachtsales.com/en/](http://shestakovyachtsales.com/en/)

### Telephones

---

USA: +1(954)274-4435

### Office hours

---

Monday – Saturday: 9:00 - 21:00 EDT

Sunday: **closed**

### Address

---



Harbour Towne Marina, 850 NE 3rd St,  
STE 213, Dania, FL 33004