

SHEERGOLD — AMELS



Builder: [AMELS](#)

Year Built: 1987

Model: Motor Yacht

Price: €5,500,000 EUR

Location: Italy

LOA: 137' 10" (42mm)

Beam: 26.24

Max Draft: 8' 3" (2.5mm)

Cruise Speed: 11.5 Knots Kts. (13 MPH)

Max Speed: 13.5 Knots Kts. (16 MPH)

Our experienced yacht broker, Andrey Shestakov, will help you choose and buy a yacht that best suits your needs **SHEERGOLD — AMELS** from our catalogue. Presently, at Shestakov Yacht Sales Inc., we have a wide variety of yachts available on our sale's list. We also work in close contact with all the big yacht manufacturers from all over the world.

If you would like to buy a yacht **SHEERGOLD — AMELS** or would like help answering any questions concerning purchasing, selling or chartering a yacht, please call **+1(954)274-4435**

TABLE OF CONTENTS

TABLE OF CONTENTS	2
SPECIFICATIONS	4
Overview	4
Basic Information	4
Dimensions	4
Speed, Capacities and Weight	4
Accommodations	5
Hull and Deck Information	5
Engine Information	5
PHOTOS	6
DSC_7736-HDR	6
DSC_7727-HDR	6
DSC_8038-HDR	6
DSC_7561-HDR	6
DSC_7574	6
DSC_7604-HDR	6
DSC_7512	7
DSC_7518	7
DSC_7520	7
DSC_7522	7
DSC_7534	7
DSC_7527	7
DSC_7957	8
DSC_7954	8
DSC_7745	8
DSC_8104	8
DSC_7623	8
DSC_7870	8

DJI_0758	9
DJI_0760	9
DSC_7910	9
CONTACTS	10
Contact details	10
Telephones	10
Office hours	10
Address	10

SPECIFICATIONS

Overview

Now for sale, the Jon Bannenberg designed Amels 42m motor yacht SHEERGOLD has been beautifully looked after and shows in remarkable condition. A stunning yacht from Dutch yard Amels' early years, SHEERGOLD is in gleaming condition thanks to an attentive owner and a full repaint in 2022. SHEERGOLD was designed by the legendary Jon Bannenberg with traditional lines and the canoe stern that was so popular in her heyday. Her interiors retain lots of her vintage character. She can accommodate eight guests across four cabins, including a full-beam main deck Owner's suite, plus a VIP cabin and two twin cabins on the lower deck aft, all with en suite. There is also room on board for nine crew staying in five cabins. Key features: -Classic Amels-In her second ownership for the last 30 years-Always private-Italian VAT paid-Designed by the legendary Jon Bannenberg-Full paint job completed in 2022-Immaculately maintained

Basic Information

Category: Motor Yacht

Model Year: 1987

Year Built: 1987

Country: Italy

Dimensions

LOA: 137' 10" (42mm)

Beam: 26.24

Max Draft: 8' 3" (2.5mm)

Speed, Capacities and Weight

Cruise Speed: 11.5 Knots Kts. (13 MPH)

Max Speed: 13.5 Knots Kts. (16 MPH)

Gross Tonnage: 387 Pounds

Water Capacity: 13000 Gallons

Holding Tank: 13208.6 Gal Gallons

Fuel Capacity: 12151.91 Gal Gallons

Accommodations

Total Cabins: 4

Hull and Deck Information

Hull Material: Steel

Deck Material: Teak

Exterior Designer: Jon Bannenberg

Interior Designer: Jon Bannenberg

Engine Information

Engines: 2

Manufacturer: Caterpillar

PHOTOS

DSC_7736-HDR



DSC_7727-HDR



DSC_8038-HDR



DSC_7561-HDR



DSC_7574



DSC_7604-HDR



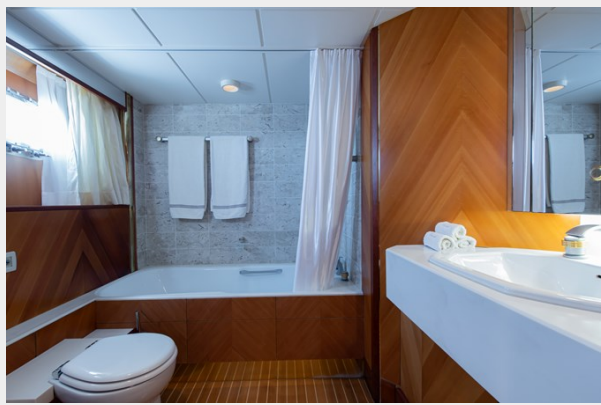
DSC_7512



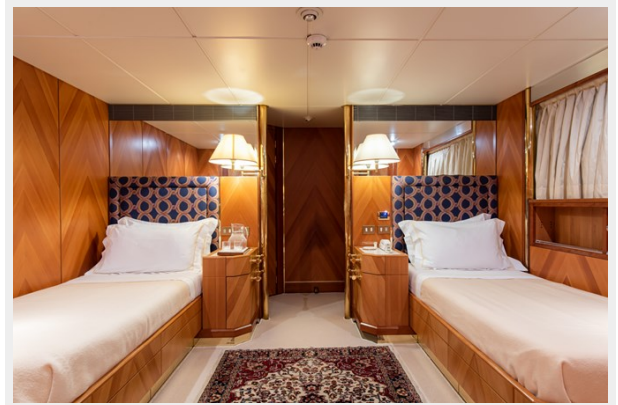
DSC_7518



DSC_7520



DSC_7522



DSC_7534



DSC_7527



DSC_7957



DSC_7954



DSC_7745



DSC_8104



DSC_7623



DSC_7870



DJI_0758



DJI_0760



DSC_7910



CONTACTS

Andrey Shestakov, leading yacht broker of the sales department of Shestakov Yacht Sales Inc. Shestakov Yacht Sales Inc., the official representative of the Miami/Fort Lauderdale FL headquarters.

Contact details

Email: andrey@shestakovyachtsales.com

Web: shestakovyachtsales.com/en/

Telephones

USA: +1(954)274-4435

Office hours

Monday – Saturday: **9:00 - 21:00** EDT

Sunday: **closed**

Address



Harbour Towne Marina, 850 NE 3rd St,
STE 213, Dania, FL 33004