

## MARY A — MAINSHIP



**Builder:** MAINSHIP

**Year Built:** 2004

**Model:** cruiser

**Price:** \$119,000 USD

**Location:** United States

**LOA:** 30' (9.14mm)

**Beam:** 13.25

**Max Draft:** 2' 6" (0.76mm)

Our experienced yacht broker, Andrey Shestakov, will help you choose and buy a yacht that best suits your needs **Mary A — MAINSHIP** from our catalogue. Presently, at Shestakov Yacht Sales Inc., we have a wide variety of yachts available on our sale's list. We also work in close contact with all the big yacht manufacturers from all over the world.

If you would like to buy a yacht **Mary A — MAINSHIP** or would like help answering any questions concerning purchasing, selling or chartering a yacht, please call **+1(954)274-4435**

# TABLE OF CONTENTS

TABLE OF CONTENTS	2
SPECIFICATIONS	5
Overview	5
Basic Information	5
Dimensions	5
Speed, Capacities and Weight	5
Accommodations	5
Hull and Deck Information	5
Engine Information	6
PHOTOS	7
9035777_20230908095106462_1_XLARGE	7
9035777_20230908095103039_1_XLARGE	7
9035777_20230908095114548_1_XLARGE	7
9035777_20230908094252111_1_XLARGE	7
9035777_20230908094245960_1_XLARGE	7
9035777_20230908094249087_1_XLARGE	7
9035777_20230908094300147_1_XLARGE	8
9035777_20230908094255071_1_XLARGE	8
9035777_20230908094257047_1_XLARGE	8
9035777_20230908094303061_1_XLARGE	8
9035777_20230908094306355_1_XLARGE	8
9035777_20230908094309313_1_XLARGE	8
9035777_20230908094312247_1_XLARGE	9
9035777_20230908094315614_1_XLARGE	9
9035777_20230908094318237_1_XLARGE	9
9035777_20230908094326280_1_XLARGE	9
9035777_20230908094320244_1_XLARGE	9
9035777_20230908094323338_1_XLARGE	9

---

9035777_20230908094330551_1_XLARGE	10
9035777_20230908094333415_1_XLARGE	10
9035777_20230908094342578_1_XLARGE	10
9035777_20230908094339684_1_XLARGE	10
9035777_20230908094336348_1_XLARGE	10
9035777_20230908094345841_1_XLARGE	10
9035777_20230908094404989_1_XLARGE	11
9035777_20230908094355643_1_XLARGE	11
9035777_20230908094358751_1_XLARGE	11
9035777_20230908094401793_1_XLARGE	11
9035777_20230908094352627_1_XLARGE	11
9035777_20230908094407983_1_XLARGE	11
9035777_20230908094410765_1_XLARGE	12
9035777_20230908100653266_1_XLARGE	12
9035777_20230908102155156_1_XLARGE	12
9035777_20230908100633278_1_XLARGE	12
9035777_20230908100636182_1_XLARGE	12
9035777_20230908100646136_1_XLARGE	12
9035777_20230908100644159_1_XLARGE	13
9035777_20230908100648299_1_XLARGE	13
9035777_20230908100651200_1_XLARGE	13
9035777_20230908100642133_1_XLARGE	13
9035777_20230908100639112_1_XLARGE	13
9035777_20230908094416770_1_XLARGE	13
9035777_20230908094423804_1_XLARGE	14
9035777_20230908094419805_1_XLARGE	14
9035777_20230908094421664_1_XLARGE	14
9035777_20230908094505116_1_XLARGE	14
9035777_20230908094453868_1_XLARGE	15

---

---

9035777_20230908094457989_1_XLARGE	15
9035777_20230908094501157_1_XLARGE	15
9035777_20230908094436438_1_XLARGE	15
9035777_20230908094440732_1_XLARGE	15
9035777_20230908094445658_1_XLARGE	15
9035777_20230908094443542_1_XLARGE	16
9035777_20230908094447650_1_XLARGE	16
9035777_20230908094451809_1_XLARGE	16
9035777_20230908094433550_1_XLARGE	16
9035777_20230908094430003_1_XLARGE	16
9035777_20230908094426935_1_XLARGE	16
CONTACTS	17
Contact details	17
Telephones	17
Office hours	17
Address	17

---

# SPECIFICATIONS

---

## Overview

---

Ever Popular 315hp Yanmar, under 1000 hours, Raymarine GPS/Chart, Simrad Auto Pilot, Marine VHF, 3.5kw NexGen Generator, 16,000BTU Cockpit Air Conditioning, Lift Kept, Cockpit Bimini with Complete enclosure, 11,000lbs Provides a Great and Smooth Ride

## Basic Information

---

**Category:** cruiser

**Sub Category:** Downeast

**Model Year:** 2004

**Year Built:** 2004

**Country:** United States

## Dimensions

---

**LOA:** 30' (9.14mm)

**Beam:** 13.25

**Max Draft:** 2' 6" (0.76mm)

## Speed, Capacities and Weight

---

**Water Capacity:** 40 Gallons

**Holding Tank:** 20 Gal Gallons

**Fuel Capacity:** 175 Gal Gallons

## Accommodations

---

**Total Cabins:** 1

## Hull and Deck Information

---

**Hull Material:** Fiberglass

---

## Engine Information

---

**Engines:** 1

**Manufacturer:** Yanmar

**Engine Type:** Inboard

**Fuel Type:** Diesel

# PHOTOS

9035777\_20230908095106462\_1\_XLARGE



9035777\_20230908095103039\_1\_XLARGE



9035777\_20230908094252111\_1\_XLARGE



9035777\_20230908095114548\_1\_XLARGE



9035777\_20230908094245960\_1\_XLARGE



9035777\_20230908094249087\_1\_XLARGE



9035777\_20230908094300147\_1\_XLARGE



9035777\_20230908094255071\_1\_XLARGE



9035777\_20230908094257047\_1\_XLARGE



9035777\_20230908094303061\_1\_XLARGE



9035777\_20230908094306355\_1\_XLARGE



9035777\_20230908094309313\_1\_XLARGE





9035777\_20230908094312247\_1\_XLARGE



9035777\_20230908094315614\_1\_XLARGE



9035777\_20230908094318237\_1\_XLARGE



9035777\_20230908094326280\_1\_XLARGE



9035777\_20230908094320244\_1\_XLARGE



9035777\_20230908094323338\_1\_XLARGE



9035777\_20230908094330551\_1\_XLARGE



9035777\_20230908094333415\_1\_XLARGE



9035777\_20230908094342578\_1\_XLARGE



9035777\_20230908094339684\_1\_XLARGE



9035777\_20230908094336348\_1\_XLARGE



9035777\_20230908094345841\_1\_XLARGE



9035777\_20230908094404989\_1\_XLARGE



9035777\_20230908094355643\_1\_XLARGE



9035777\_20230908094358751\_1\_XLARGE



9035777\_20230908094401793\_1\_XLARGE



9035777\_20230908094352627\_1\_XLARGE



9035777\_20230908094407983\_1\_XLARGE



9035777\_20230908094410765\_1\_XLARGE



9035777\_20230908100653266\_1\_XLARGE



9035777\_20230908102155156\_1\_XLARGE



9035777\_20230908100633278\_1\_XLARGE



9035777\_20230908100636182\_1\_XLARGE



9035777\_20230908100646136\_1\_XLARGE



9035777\_20230908100644159\_1\_XLARGE



9035777\_20230908100648299\_1\_XLARGE



9035777\_20230908100651200\_1\_XLARGE



9035777\_20230908100642133\_1\_XLARGE



9035777\_20230908100639112\_1\_XLARGE



9035777\_20230908094416770\_1\_XLARGE



9035777\_20230908094423804\_1\_XLARGE

9035777\_20230908094419805\_1\_XLARGE



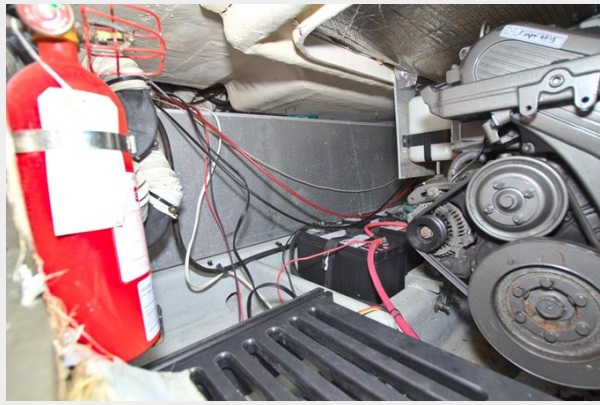
9035777\_20230908094421664\_1\_XLARGE



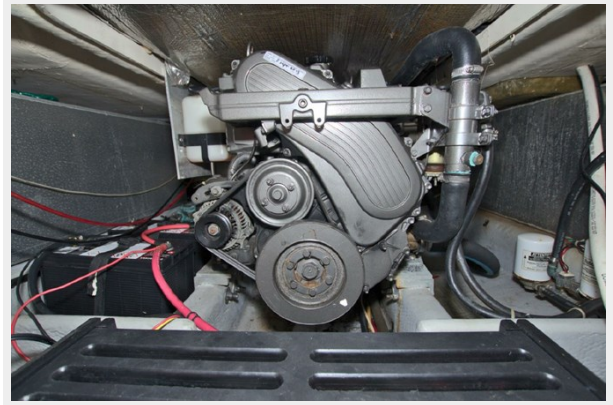
9035777\_20230908094505116\_1\_XLARGE



9035777\_20230908094453868\_1\_XLARGE



9035777\_20230908094457989\_1\_XLARGE



9035777\_20230908094501157\_1\_XLARGE



9035777\_20230908094436438\_1\_XLARGE



9035777\_20230908094440732\_1\_XLARGE



9035777\_20230908094445658\_1\_XLARGE



9035777\_20230908094443542\_1\_XLARGE



9035777\_20230908094447650\_1\_XLARGE



9035777\_20230908094451809\_1\_XLARGE



9035777\_20230908094433550\_1\_XLARGE



9035777\_20230908094430003\_1\_XLARGE



9035777\_20230908094426935\_1\_XLARGE





# CONTACTS

---

Andrey Shestakov, leading yacht broker of the sales department of Shestakov Yacht Sales Inc. Shestakov Yacht Sales Inc., the official representative of the Miami/Fort Lauderdale FL headquarters.

## Contact details

---

Email: [andrey@shestakovyachtsales.com](mailto:andrey@shestakovyachtsales.com)

Web: [shestakovyachtsales.com/en/](http://shestakovyachtsales.com/en/)

## Telephones

---

USA: +1(954)274-4435

## Office hours

---

Monday – Saturday: **9:00 - 21:00** EDT

Sunday: **closed**

## Address

---



Harbour Towne Marina, 850 NE 3rd St,  
STE 213, Dania, FL 33004