

## SEMPER FI — JEFFERSON



**Builder:** JEFFERSON

**Year Built:** 1988

**Model:** Motor Yacht

**Price:** PRICE ON APPLICATION

**Location:** United States

**LOA:** 60' (18.29mm)

**Beam:** 17.5

**Max Draft:** 6' (1.83mm)

**Cruise Speed:** 10 Knots Kts. (12 MPH)

Our experienced yacht broker, Andrey Shestakov, will help you choose and buy a yacht that best suits your needs **Semper Fi — JEFFERSON** from our catalogue. Presently, at Shestakov Yacht Sales Inc., we have a wide variety of yachts available on our sale's list. We also work in close contact with all the big yacht manufacturers from all over the world.

If you would like to buy a yacht **Semper Fi — JEFFERSON** or would like help answering any questions concerning purchasing, selling or chartering a yacht, please call **+1(954)274-4435**

# TABLE OF CONTENTS

TABLE OF CONTENTS	2
SPECIFICATIONS	4
Overview	4
Basic Information	4
Dimensions	4
Speed, Capacities and Weight	5
Accommodations	5
Hull and Deck Information	5
Engine Information	5
PHOTOS	6
3	6
2	6
5	6
4	6
7	6
6	6
9	7
8	7
10	7
11	7
13	7
12	7
15	8
14	8
16	8
17	8
18	8
19	8

---

20	9
CONTACTS	10
Contact details	10
Telephones	10
Office hours	10
Address	10

---

# SPECIFICATIONS

---

## Overview

---

Semper Fi is a very spacious motor yacht making the perfect live-aboard or cruising vessel. She provides a very stable ride with a solid fiberglass hull, hard aft chines, long deep keel, and a wide 17'6" beam. There is plenty of outdoor space with a large aft covered deck and a massive flybridge with upper running station. Both aft deck and flybridge are outfitted with wet-bars including sinks and refrigerators. The Interior has a very comfortable layout with salon on the main deck w - day head, entertainment center, formal dining area, and pilothouse forward. Down below is the galley, office, and 3-staterooms w/3-heads. Forward v-berth has been converted to a office but there are cushions to go on the countertops to make two single berths. The galley has been fully updated with stainless appliances and granite counter tops. Its fully equipped with trash compactor, full size refrigerator - freezer, double basin stainless sink, oven, convection microwave, glass cooktop, and dishwasher. Moving aft you have two guest staterooms to port, one with a full bed and one with two twins. To Starboard are two guest heads with a Jack & Jill shower. Between the guest quarters and aft master stateroom are two large walk-in engine rooms port & starboard allowing great access to the machinery for maintenance. Moving to the rear of the boat you will find the full beam master stateroom w - king size bed and ensuite head w - large shower stall. 2 x Detroit 8V92 engine: 735 hp, engine hours - 3942 hours and fuel type - diesel. With a fuel tank capacity of 3,785 liters, the 1988 Jefferson 60 Marquessa Motor Yacht can cover a distance. The freshwater tanks are designed with a capacity of 1,514 liters.

## Basic Information

---

**Category:** Motor Yacht

**Model Year:** 1988

**Year Built:** 1988

**Country:** United States

## Dimensions

---

**LOA:** 60' (18.29mm)

**Beam:** 17.5

**Max Draft:** 6' (1.83mm)

---

## Speed, Capacities and Weight

---

**Cruise Speed:** 10 Knots Kts. (12 MPH)

---

## Accommodations

---

**Total Cabins:** 3

---

## Hull and Deck Information

---

**Hull Material:** Fiberglass

**Hull Configuration:** Deep Vee

---

## Engine Information

---

**Engines:** 2

**Manufacturer:** Detroit Diesel

**Engine Type:** Inboard

**Fuel Type:** Diesel

# PHOTOS

2



3



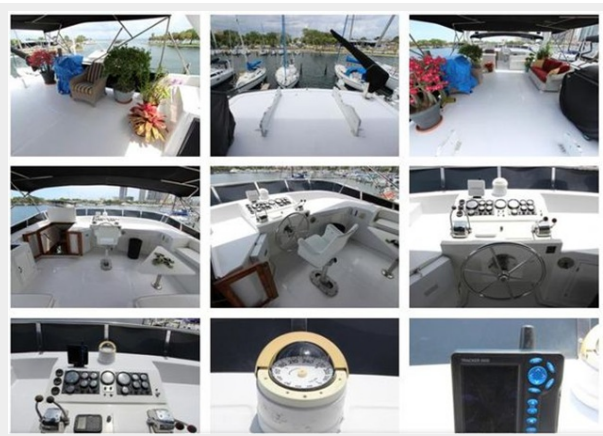
4



5



6



7



8



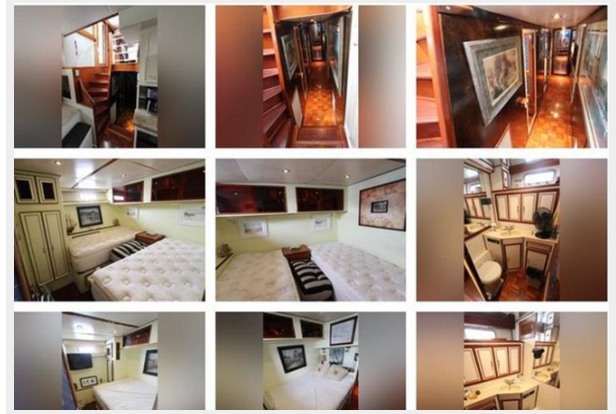
9



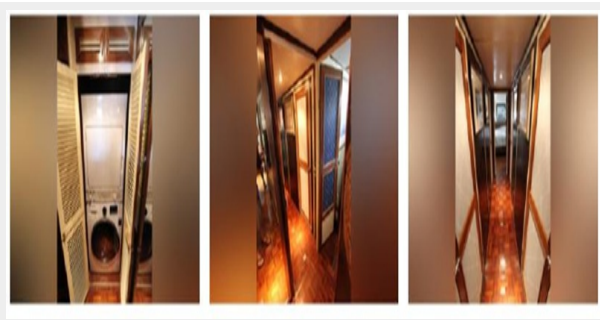
10



11



12



13



14



15



16



17



18



19





20



# CONTACTS

---

Andrey Shestakov, leading yacht broker of the sales department of Shestakov Yacht Sales Inc. Shestakov Yacht Sales Inc., the official representative of the Miami/Fort Lauderdale FL headquarters.

## Contact details

---

Email: [andrey@shestakovyachtsales.com](mailto:andrey@shestakovyachtsales.com)

Web: [shestakovyachtsales.com/en/](http://shestakovyachtsales.com/en/)

## Telephones

---

USA: +1(954)274-4435

## Office hours

---

Monday – Saturday: **9:00 - 21:00** EDT

Sunday: **closed**

## Address

---



Harbour Towne Marina, 850 NE 3rd St,  
STE 213, Dania, FL 33004