

POINT OF VIEW — OFFSHORE YACHTS



Builder: OFFSHORE YACHTS

LOA: 48' (14.63mm)

Year Built: 1987

Beam: 15.5

Model: Sport Fisherman

Max Draft: 4' 2" (1.27mm)

Price: PRICE ON APPLICATION

Location: United States

Our experienced yacht broker, Andrey Shestakov, will help you choose and buy a yacht that best suits your needs **Point of View — OFFSHORE YACHTS** from our catalogue. Presently, at Shestakov Yacht Sales Inc., we have a wide variety of yachts available on our sale's list. We also work in close contact with all the big yacht manufacturers from all over the world.

If you would like to buy a yacht **Point of View — OFFSHORE YACHTS** or would like help answering any questions concerning purchasing, selling or chartering a yacht, please call **+1(954)274-4435**

TABLE OF CONTENTS

TABLE OF CONTENTS	2
SPECIFICATIONS	5
Overview	5
Basic Information	5
Dimensions	5
Speed, Capacities and Weight	5
Accommodations	5
Hull and Deck Information	6
Engine Information	6
PHOTOS	7
2	7
3	7
4	7
5	7
6	8
7	8
9	8
8	8
10	9
11	9
12	9
13	9
15	10
14	10
16	10
17	10
18	10
19	10

21	11
20	11
22	11
23	11
24	12
25	12
26	12
27	12
28	13
29	13
30	13
31	13
33	14
32	14
34	14
35	14
36	15
37	15
39	15
38	15
40	16
41	16
42	16
43	16
44	16
45	16
46	17
47	17
48	17

49	17
50	18
51	18
52	18
53	18
54	18
55	18
56	19
CONTACTS	20
Contact details	20
Telephones	20
Office hours	20
Address	20

SPECIFICATIONS

Overview

The 48 Yachtfisher is a well designed and versatile Yacht perfect for afternoon gunk holing, serious fishing or extended cruising. Famous for its "sea friendly ride", it's quick to come up on plane. The modified V cuts through waves and chop throughout the speed range. The well thought out deck plan and spacious interior is comfortable and luxurious. Quality materials and construction are obvious on every level.

Basic Information

Category: Sport Fisherman

Model Year: 1987

Year Built: 1987

Country: United States

Dimensions

LOA: 48' (14.63mm)

LWL: 43' (13.11mm)

Beam: 15.5

Max Draft: 4' 2" (1.27mm)

Speed, Capacities and Weight

Water Capacity: 300 Gallons

Holding Tank: 50 Gal Gallons

Fuel Capacity: 600 Gal Gallons

Accommodations

Total Berths: 7

Total Heads: 2

Hull and Deck Information

Hull Material: Fiberglass

Engine Information

Engines: 2

Manufacturer: Volvo Penta

Engine Type: Inboard

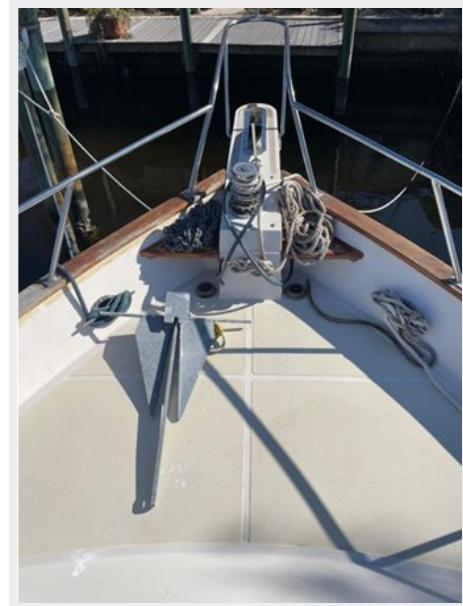
Fuel Type: Diesel

PHOTOS

2



3



4



5



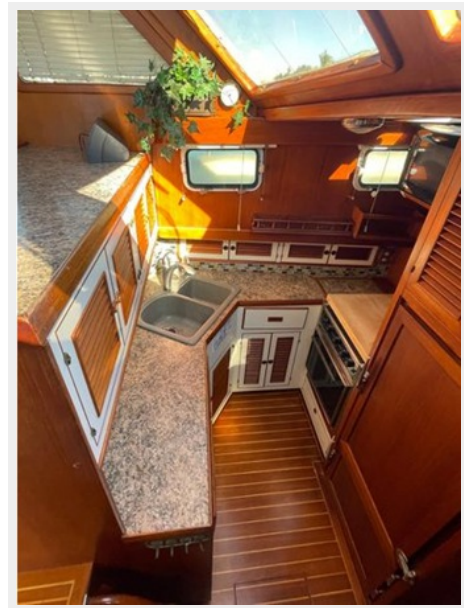
6



7



9



8



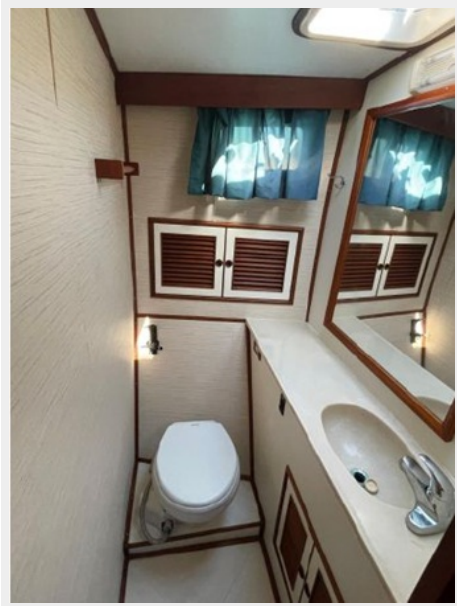
10



11



12



13



14



15



16



17



18



19



20



21



22



23



24



25



26



27



28



29



30



31



32



33



34



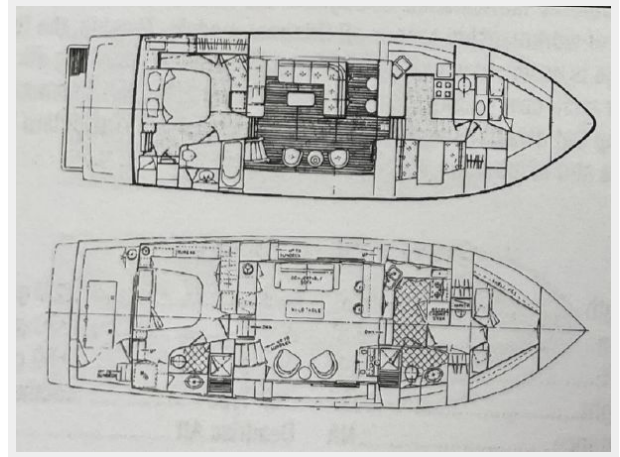
35



36



37



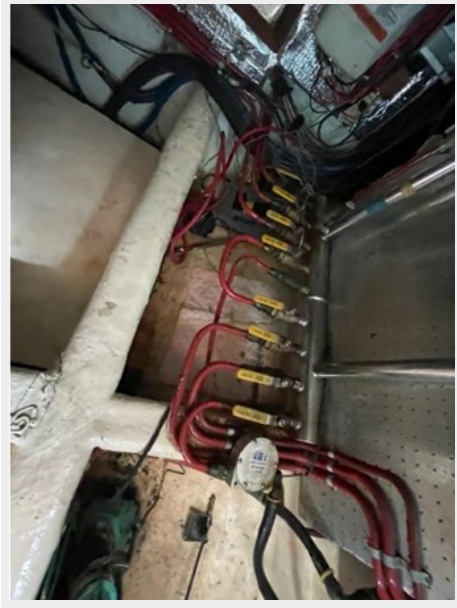
38



39



40



41



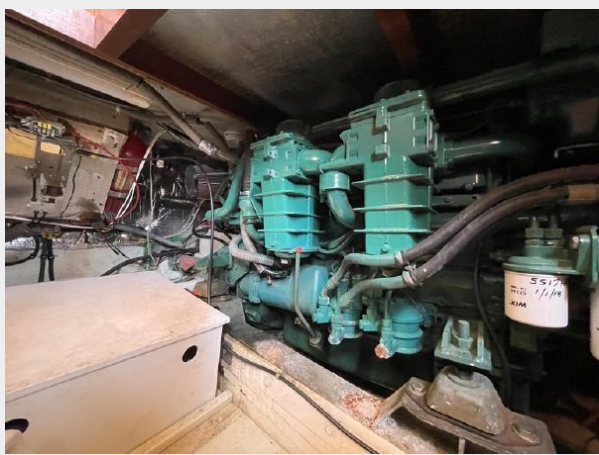
42



43



44



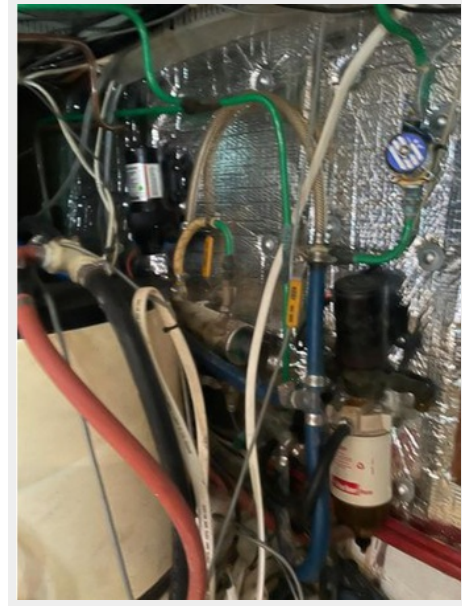
45



46



47



48



49



50



51



52



53



54



55



56



CONTACTS

Andrey Shestakov, leading yacht broker of the sales department of Shestakov Yacht Sales Inc. Shestakov Yacht Sales Inc., the official representative of the Miami/Fort Lauderdale FL headquarters.

Contact details

Email: andrey@shestakovyachtsales.com

Web: shestakovyachtsales.com/en/

Telephones

USA: +1(954)274-4435

Office hours

Monday – Saturday: **9:00 - 21:00** EDT

Sunday: **closed**

Address



Harbour Towne Marina, 850 NE 3rd St,
STE 213, Dania, FL 33004