

A LIL DEEPER III — PURSUIT



Builder: PURSUIT

Year Built: 2016

Model: cruiser

Price: PRICE ON APPLICATION

Location: United States

LOA: 36' (10.97mm)

Beam: 12.5

Min Draft: 2' 2" (0.66mm)

Max Draft: 3' 1" (0.94mm)

Our experienced yacht broker, Andrey Shestakov, will help you choose and buy a yacht that best suits your needs A Lil Deeper III — PURSUIT from our catalogue. Presently, at Shestakov Yacht Sales Inc., we have a wide variety of yachts available on our sale's list. We also work in close contact with all the big yacht manufacturers from all over the world.

If you would like to buy a yacht A Lil Deeper III — PURSUIT or would like help answering any questions concerning purchasing, selling or chartering a yacht, please call +1(954)274-4435

TABLE OF CONTENTS

TABLE OF CONTENTS	2
SPECIFICATIONS	3
Overview	3
Basic Information	3
Dimensions	4
Speed, Capacities and Weight	4
Accommodations	4
Hull and Deck Information	4
Engine Information	4
PHOTOS	5
CONTACTS	16
Contact details	16
Telephones	16
Office hours	16
Address	16

SPECIFICATIONS

Overview

This 365i SC Is An Excellent Opportunity to Own a Loaded, Clean and Well Maintained Outboard Powered Cruiser!!

- **Twin 350 hp Yamaha With Under 500 Hours**
- **Custom Engineered Sparrow Props Provide Dramatically Improved Performance (\$10,000 Upgrade)**
- **Engines Flushed With Salt Away Fluid After EVERY Use**
- **Diesel Generator With Low Hours**
- **Engines and Generator Full Service in January of '23**
- **Bow Thruster Makes This A Captain Friendly Boat Around The Dock**
- **Garmin GPS Chart Plotter/ Radar/ Depth Finder with Fish Finder Function and VHF Radio**
- **Cockpit Air, Sunroof, Grill and Fridge**
- **Cockpit and Swim Platform Faux Teak-New In '21-Great Look!**
- **Comfortably Sleeps Four With Mid Berth Cabin and Forward Berth Electric Drop Down Table**
- **Wood Floors With Cabinets Look Great**
- **Mid Cabin TV and High End Marine Stereo System**
- **Forward Deck Sun Pad With Upgraded Flip Up Backrest and New Custom Cover**
- **New Aft Curtain With Custom Screen**
- **Transom Aft Seat With Custom Cover (New)**
- **White Mesh Cockpit Privacy Cover**
- **Windlass With Stainless Anchor Upgrade**
- **Bottom Painted in January of '23**

A Lil Deeper III is a must see! She has been exceptionally well maintained by her experienced and meticulous owners. She will simply not disappoint. Call listing broker today for more information and to schedule a personal showing.

Basic Information

Category: cruiser

Sub Category: Sport Cruiser

Model Year: 2016

Year Built: 2016

Country: United States

Dimensions

LOA: 36' (10.97mm)

Beam: 12.5

Min Draft: 2' 2" (0.66mm)

Max Draft: 3' 1" (0.94mm)

Speed, Capacities and Weight

Water Capacity: 75 Gallons

Holding Tank: 28 Gal Gallons

Fuel Capacity: 300 Gal Gallons

Accommodations

Total Cabins: 1

Total Heads: 1

Hull and Deck Information

Hull Material: Fiberglass

Engine Information

Engines: 2

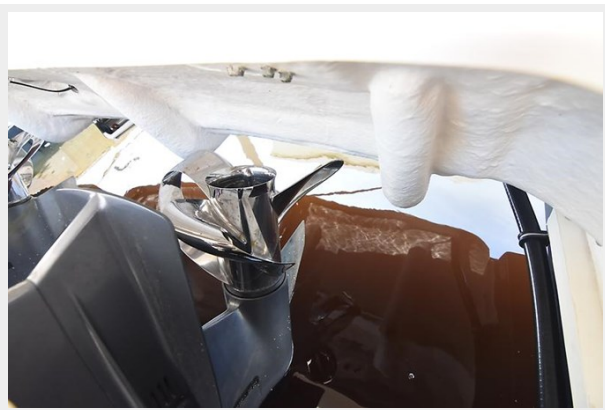
Manufacturer: Yamaha

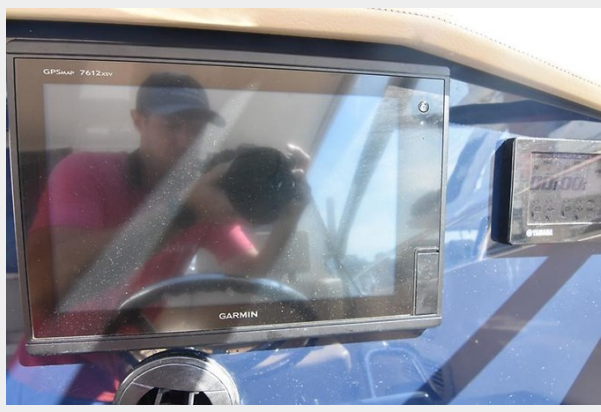
Engine Type: Outboard

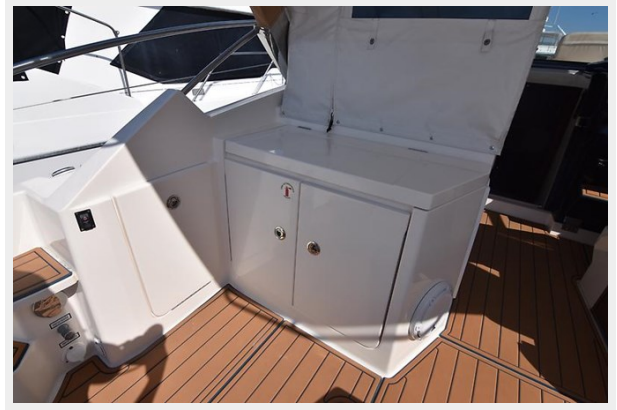
Fuel Type: Gas/Petrol

PHOTOS



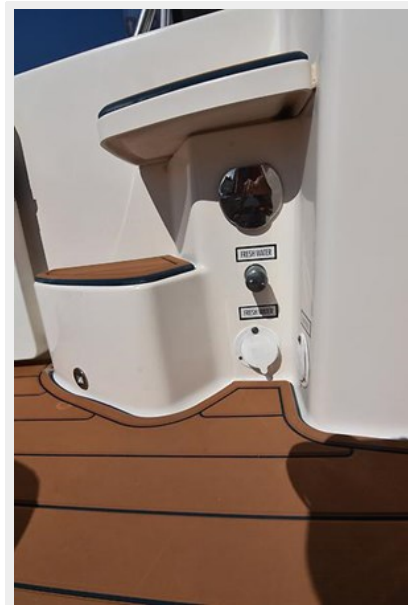
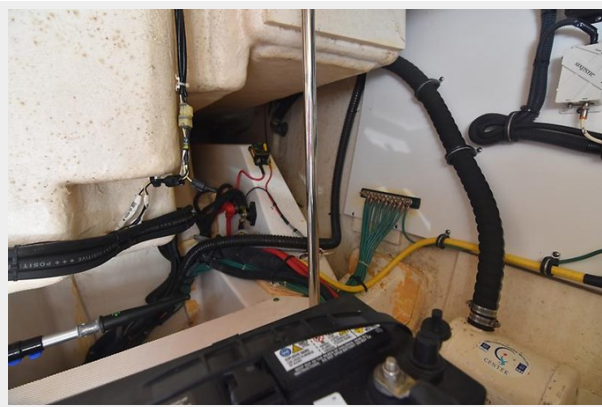




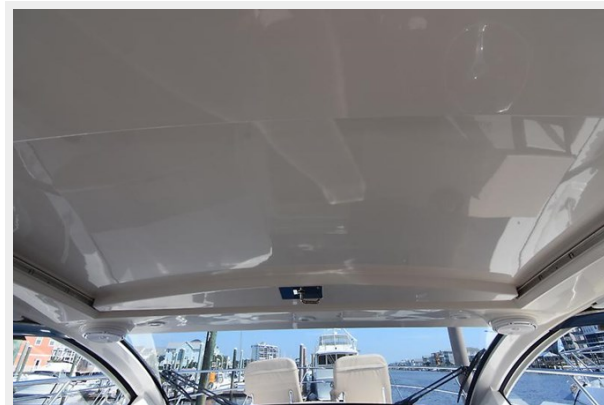


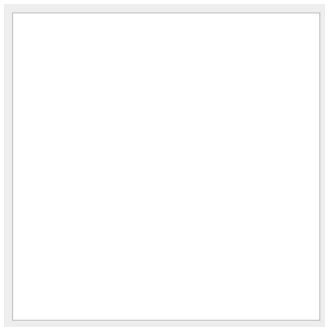
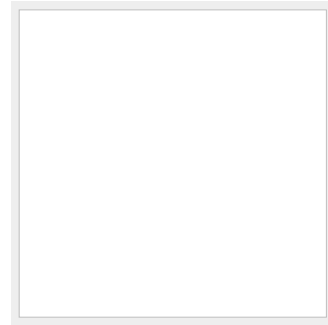














CONTACTS

Andrey Shestakov, leading yacht broker of the sales department of Shestakov Yacht Sales Inc. Shestakov Yacht Sales Inc., the official representative of the Miami/Fort Lauderdale FL headquarters.

Contact details

Email: andrey@shestakovyachtsales.com

Web: shestakovyachtsales.com/en/

Telephones

USA: +1(954)274-4435

Office hours

Monday – Saturday: **9:00 - 21:00** EDT

Sunday: **closed**

Address



Harbour Towne Marina, 850 NE 3rd St,
STE 213, Dania, FL 33004