

NAUTI-PAWS — O'DAY



Builder: O'DAY

LOA: 35' (10.67m)

Year Built: 1988

Model: Cruising or Racing Sailboat

Price: \$32,000 USD

Location: United States

Our experienced yacht broker, Andrey Shestakov, will help you choose and buy a yacht that best suits your needs **Nauti-Paws — O'DAY** from our catalogue. Presently, at Shestakov Yacht Sales Inc., we have a wide variety of yachts available on our sale's list. We also work in close contact with all the big yacht manufacturers from all over the world.

If you would like to buy a yacht **Nauti-Paws — O'DAY** or would like help answering any questions concerning purchasing, selling or chartering a yacht, please call **+1(954)274-4435**

TABLE OF CONTENTS

TABLE OF CONTENTS	2
SPECIFICATIONS	5
Overview	5
Basic Information	5
Dimensions	5
Accommodations	5
Hull and Deck Information	5
Engine Information	5
PHOTOS	6
53_2802741_winch	6
54_2802741_nauti_paws	6
55_2802741_furling	6
56_2802741_stackpack	6
57_2802741_halyards	7
58_2802741_cowl	7
60_2802741_main	7
59_2802741_nauti_paws	7
61_2802741_halyards_main	8
62_2802741_reef	8
63_2802741_nauti_paws	8
1_2802741_cockpit	8
2_2802741_nauti_paws	9
3_2802741_nauti_paws	9
4_2802741_nauti_paws	9
5_2802741_engine	9
6_2802741_power	10
7_2802741_water	10
8_2802741_fenders	10

9_2802741_dock_lines	10
11_2802741_standing_rigging	11
10_2802741_vang	11
12_2802741_mast	11
13_2802741_nauti_paws	11
14_2802741_solar_panels	12
15_2802741_blocks	12
17_2802741_storage	12
16_2802741_anchor_rhode	12
18_2802741_fridge_freezer	13
19_2802741_fridge_freezer	13
20_2802741_gimble_stove	13
21_2802741_dual_stainless_sinks	13
22_2802741_salon	14
23_2802741_u_shaped_dining_port	14
24_2802741_quarter_berth_aft	14
25_2802741_quarter_berth_starboard	14
26_2802741_v_berth	15
27_2802741_settee_storage	15
28_2802741_louvre_shades	15
29_2802741_storage	15
30_2802741_captains_docs	16
31_2802741_fire_extinguisher_locker	16
33_2802741_jabsco_head	16
32_2802741_fans	16
34_2802741_shower_curtain	17
35_2802741_nav_station	17
36_2802741_vhf	17
37_2802741_inverter	17

39_2802741_lp_master_switch	18
38_2802741_rule_5000	18
40_2802741_stairs	18
41_2802741_heel_angle	18
42_2802741_winch_handle_holder	19
43_2802741_edson_wheel	19
44_2802741_edson_wheel	19
45_2802741_lifesling	19
46_2802741_spare_diesel	20
47_2802741_manual_pump	20
48_2802741_lp_storgage	20
49_2802741_universal_controls	20
50_2802741_auto_pilot	21
51_2802741_helm	21
52_2802741_gps_chartplotter	21
CONTACTS	22
Contact details	22
Telephones	22
Office hours	22
Address	22

SPECIFICATIONS

Overview

Nauti- Paws, 1988 O'Day Sloop, 35', shoal draft, A diamond in the rough! Meticulously maintained, clean as a whistle. Engine 900 hours, serviced annually. Vessel hauled annually, fully cleaned & painted. Tender to, West Marine Rib with electric Torpedo engine. Teak sole, Nav Station, full galley, dual stainless sinks, dual fridge / freezer holding cooler tank. Jabsco Head, V berth, U shaped dining with settee and single berth. Single berth stern behind Nav Station. New stack pack, chute, North Sails, portable AC unit. Ready for Bay or down Island cruising. Located in Annapolis, Maryland. Just sail away! A true gem.

Basic Information

Category: Cruising or Racing Sailboat

Model Year: 1988

Year Built: 1988

Country: United States

Dimensions

LOA: 35' (10.67mm)

Accommodations

Total Cabins: 1

Hull and Deck Information

Hull Material: Fiberglass

Engine Information

Engines: 1

Manufacturer: westerbeke

PHOTOS

53_2802741_winch



54_2802741_nauti_paws



55_2802741_furling



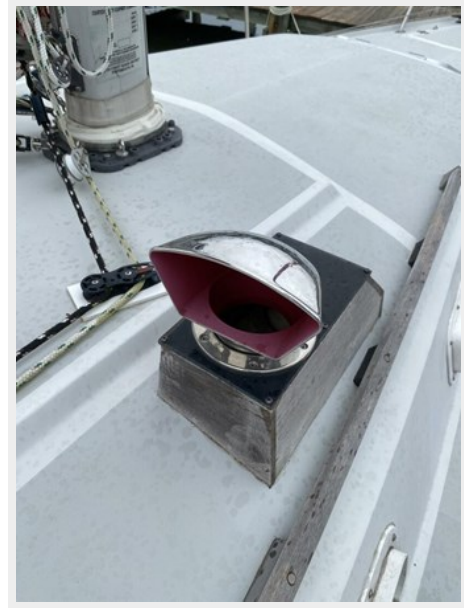
56_2802741_stackpack



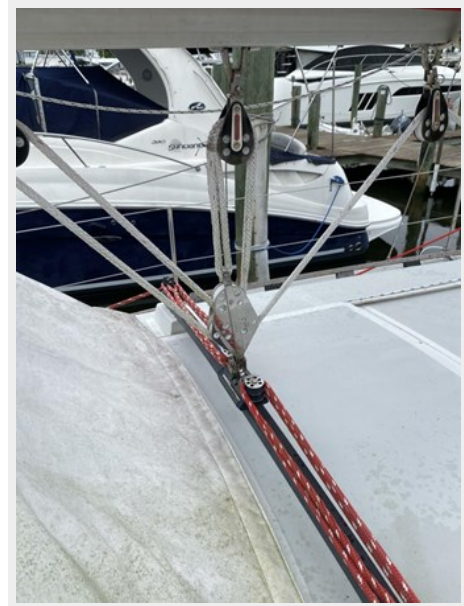
57_2802741_halyards



58_2802741_cowl



60_2802741_main



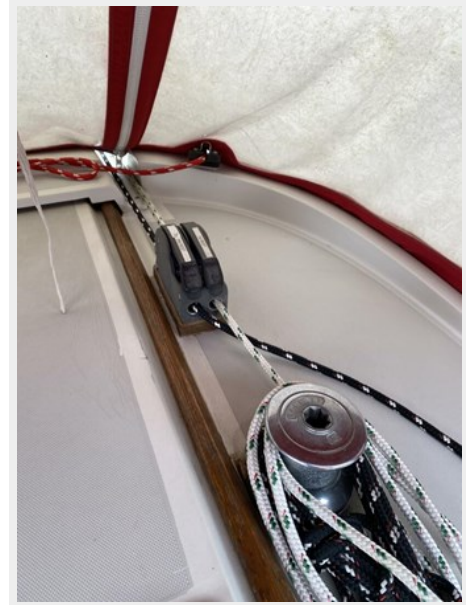
59_2802741_nauti_paws



61_2802741_halyards_main



62_2802741_reef



63_2802741_nauti_paws



1_2802741_cockpit



2_2802741_nauti_paws



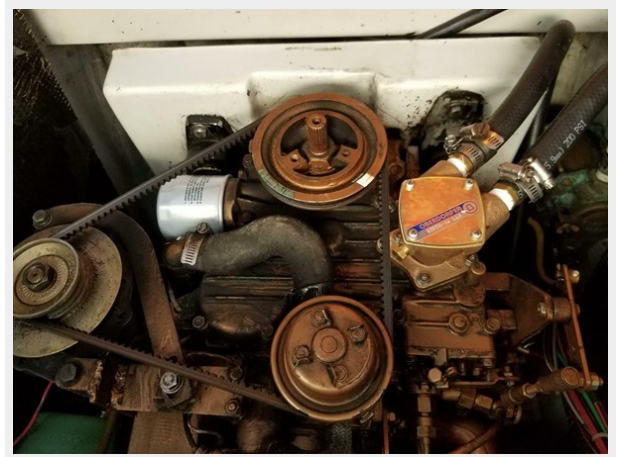
3_2802741_nauti_paws



4_2802741_nauti_paws



5_2802741_engine



6_2802741_power



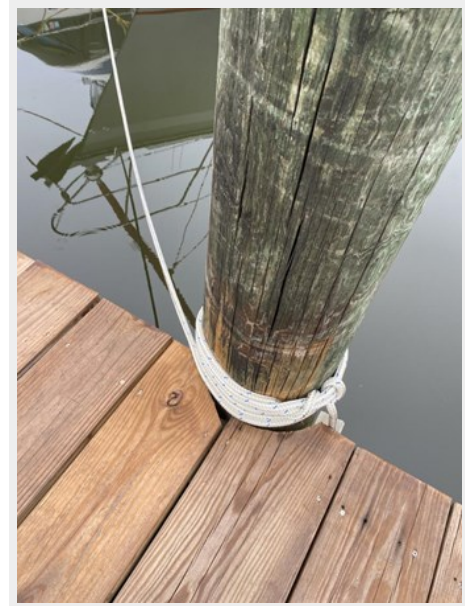
7_2802741_water



8_2802741_fenders



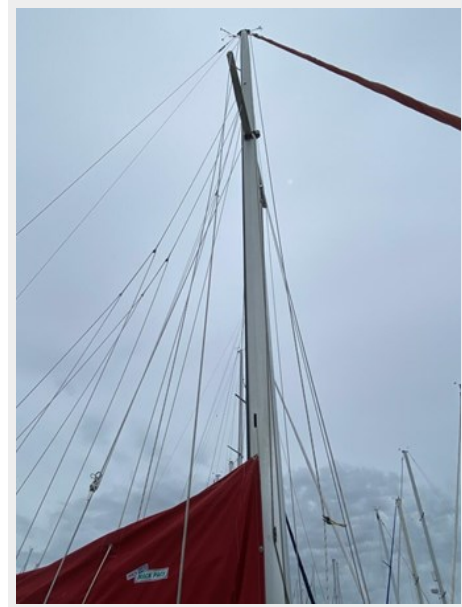
9_2802741_dock_lines



10_2802741_vang



11_2802741_standing_rigging



12_2802741_mast



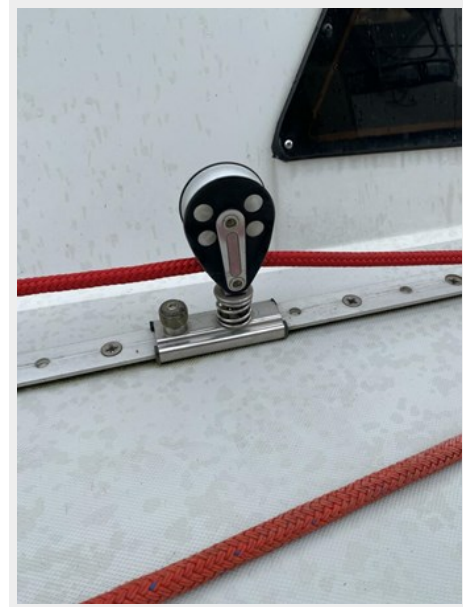
13_2802741_nauti_paws



14_2802741_solar_panels



15_2802741_blocks



16_2802741_anchor_rhode



17_2802741_storage



18_2802741_fridge_freezer



19_2802741_fridge_freezer



20_2802741_gimble_stove



21_2802741_dual_stainless_sinks



22_2802741_salon



23_2802741_u_shaped_dining_port



24_2802741_quarter_berth_aft



25_2802741_quarter_berth_starboard



26_2802741_v_berth



27_2802741_settee_storage



28_2802741_louvre_shades



29_2802741_storage



30_2802741_captains_docs



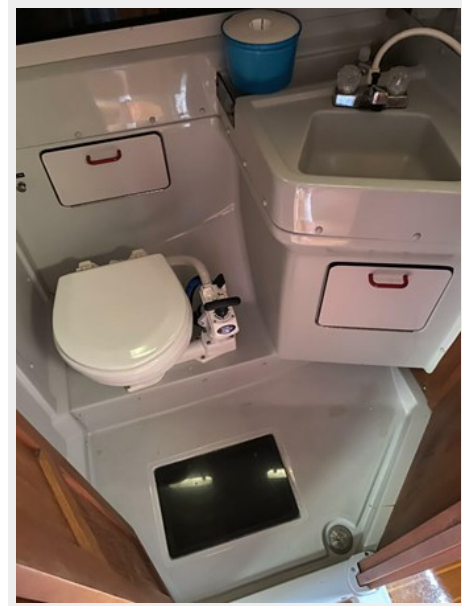
31_2802741_fire_extinguisher_locker



32_2802741_fans



33_2802741_jabsco_head



34_2802741_shower_curtain



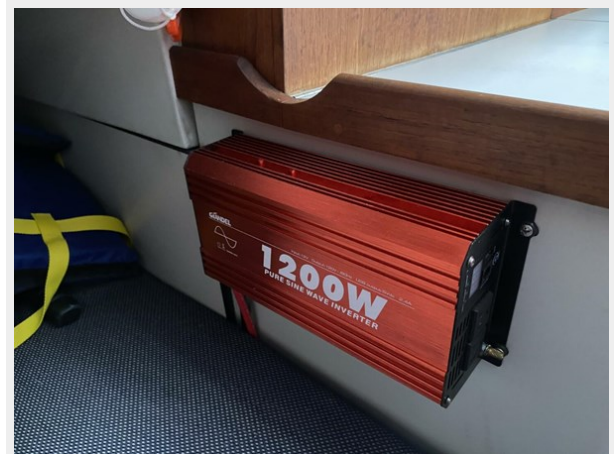
35_2802741_nav_station



36_2802741_vhf



37_2802741_inverter



38_2802741_rule_5000



39_2802741_lp_master_switch



40_2802741_stairs



41_2802741_heel_angle



42_2802741_winch_handle_holder



43_2802741_edson_wheel



44_2802741_edson_wheel



45_2802741_lifesling



46_2802741_spare_diesel



47_2802741_manual_pump



48_2802741_lp_storage



49_2802741_universal_controls



50_2802741_auto_pilot



51_2802741_helm



52_2802741_gps_chartplotter



CONTACTS

Andrey Shestakov, leading yacht broker of the sales department of Shestakov Yacht Sales Inc. Shestakov Yacht Sales Inc., the official representative of the Miami/Fort Lauderdale FL headquarters.

Contact details

Email: andrey@shestakovyachtsales.com

Web: shestakovyachtsales.com/en/

Telephones

USA: +1(954)274-4435

Office hours

Monday – Saturday: **9:00 - 21:00** EDT

Sunday: **closed**

Address



Harbour Towne Marina, 850 NE 3rd St,
STE 213, Dania, FL 33004