

MADAME GENEVA — DUFOUR



Builder: DUFOUR

Year Built: 2015

Model: Cruising Sailboat

Price: \$395,000 USD

Location: United States

LOA: 43' 3" (13.18mm)

Beam: 15.58

Max Draft: 6' 4" (1.93mm)

Our experienced yacht broker, Andrey Shestakov, will help you choose and buy a yacht that best suits your needs **MADAME GENEVA — DUFOUR** from our catalogue. Presently, at Shestakov Yacht Sales Inc., we have a wide variety of yachts available on our sale's list. We also work in close contact with all the big yacht manufacturers from all over the world.

If you would like to buy a yacht **MADAME GENEVA — DUFOUR** or would like help answering any questions concerning purchasing, selling or chartering a yacht, please call **+1(954)274-4435**

TABLE OF CONTENTS

TABLE OF CONTENTS	2
SPECIFICATIONS	4
Overview	4
Basic Information	4
Dimensions	4
Accommodations	4
Hull and Deck Information	4
Engine Information	4
PHOTOS	5
Salon from Companionway	5
Full Salon Table	5
Starboard Salon Galley Forward	5
Convertible Nav Station Aft	5
Nav Desk	5
Nav Station Detail	5
Electrical Panel	6
Salon Looking Aft to Port	6
Galley to Starboard	6
Galley Wide View	6
Galley to Port	7
Stove and Oven Detail	7
Galley Reefer	7
Forward Cabin and Berth	7
Locker Shelving Forward Cabin	8
Forward Head to Starboard	8
Forward Shower	8
Port Cabin Double Berth	8
Aft Head and Shower	9

Starboard Cabin Convertible Double	9
Foredeck	9
Hull Hard Chine	9
Deck House Profile	9
Cockpit Awning Side View	9
Cockpit from Dodger	10
Twin Wheels Looking Aft	10
Starboard Helm Electronics	10
Starboard Helm	10
Twin Wheels Looking Forward	10
Cockpit Table	10
On Mooring	11
Folding Transom and Aft Cockpit	11
Starboard Beam Aerial View	11
Starboard Quarter	11
Starboard Quarter from Above	11
Sailing from Behind	11
Volvo Diesel	12
Engine Hours 9-23	12
CONTACTS	13
Contact details	13
Telephones	13
Office hours	13
Address	13

SPECIFICATIONS

Overview

Three-cabin, twin wheel, folding transom, shoal keel. US specifications. Many innovative features. Ready to go!

Basic Information

Category: Cruising Sailboat

Model Year: 2015

Year Built: 2015

Country: United States

Dimensions

LOA: 43' 3" (13.18mm)

Beam: 15.58

Max Draft: 6' 4" (1.93mm)

Accommodations

Total Cabins: 3

Total Heads: 3

Hull and Deck Information

Hull Material: Fiberglass

Hull Color: White

Engine Information

Engines: 1

Manufacturer: Volvo

Engine Type: Inboard

Fuel Type: Diesel

PHOTOS

Salon from Companionway



Full Salon Table



Starboard Salon Galley Forward



Convertible Nav Station Aft



Nav Desk



Nav Station Detail



Electrical Panel



Salon Looking Aft to Port



Galley Wide View



Galley to Starboard



Galley to Port



Stove and Oven Detail



Galley Reefer



Forward Cabin and Berth



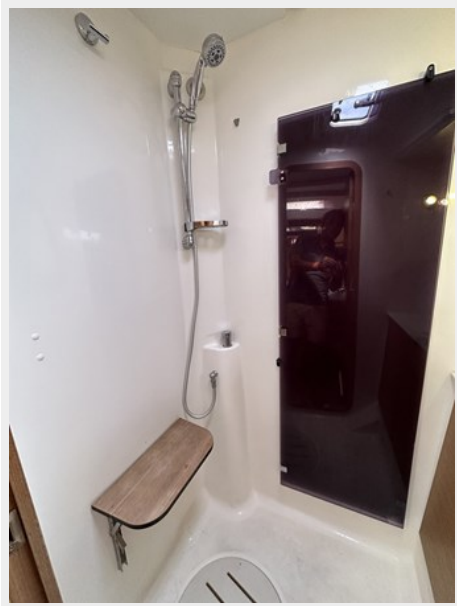
Locker Shelving Forward Cabin



Forward Head to Starboard



Forward Shower



Port Cabin Double Berth



Aft Head and Shower



Starboard Cabin Convertible Double



Foredeck



Hull Hard Chine



Deck House Profile



Cockpit Awning Side View



Cockpit from Dodger



Twin Wheels Looking Aft



Starboard Helm



Starboard Helm Electronics



Twin Wheels Looking Forward



Cockpit Table



Folding Transom and Aft Cockpit



On Mooring



Starboard Quarter



Starboard Beam Aerial View



Starboard Quarter from Above



Sailing from Behind



Volvo Diesel



Engine Hours 9-23



CONTACTS

Andrey Shestakov, leading yacht broker of the sales department of Shestakov Yacht Sales Inc. Shestakov Yacht Sales Inc., the official representative of the Miami/Fort Lauderdale FL headquarters.

Contact details

Email: andrey@shestakovyachtsales.com

Web: shestakovyachtsales.com/en/

Telephones

USA: +1(954)274-4435

Office hours

Monday – Saturday: **9:00 - 21:00** EDT

Sunday: **closed**

Address



Harbour Towne Marina, 850 NE 3rd St,
STE 213, Dania, FL 33004