

## VERSTEHEN — TIARA



**Builder:** TIARA

**Year Built:** 2015

**Model:** Motor Yacht

**Price:** PRICE ON APPLICATION

**Location:** United States

**LOA:** 53' (16.15mm)

**Beam:** 15.91

**Max Draft:** 4' 8" (1.42mm)

**Cruise Speed:** 30 Knots Kts. (35 MPH)

**Max Speed:** 35 Knots Kts. (40 MPH)

Our experienced yacht broker, Andrey Shestakov, will help you choose and buy a yacht that best suits your needs **Verstehen — TIARA** from our catalogue. Presently, at Shestakov Yacht Sales Inc., we have a wide variety of yachts available on our sale's list. We also work in close contact with all the big yacht manufacturers from all over the world.

If you would like to buy a yacht **Verstehen — TIARA** or would like help answering any questions concerning purchasing, selling or chartering a yacht, please call **+1(954)274-4435**

---

# TABLE OF CONTENTS

---

TABLE OF CONTENTS	2
SPECIFICATIONS	3
Overview	3
Basic Information	3
Dimensions	3
Speed, Capacities and Weight	4
Accommodations	4
Hull and Deck Information	4
Engine Information	4
PHOTOS	5
CONTACTS	12
Contact details	12
Telephones	12
Office hours	12
Address	12

---

# SPECIFICATIONS

---

## Overview

---

This stunning Tiara 50 Coupe "Verstehen" has everything you could expect, and then some in a yacht of this caliber. This features the two stateroom / two head layout with the washer/dryer utility room on the port side. Powered with the optional Volvo IPS 950s, she is quite a performer and has just 620 hours

This vessel features a hydraulic lift, which houses the hard bottom inflatable that comes as part of the ready-to-go package. The aft cockpit has generous seating, a hydraulic table, an electric grill, a retractable sunshade and more. Optional cockpit controls on the starboard side! As you move inside to the main salon, you are wowed by her simple elegance and function. Ample and comfortable seating, a raised dinette, high end galley appliances, a retractable TV, and more, while natural daylight abounds. The helm features an extremely comfortable and electronically adjustable helm seat, putting your joystick and full complement of electronics at your fingertips. As you move to the lower level, the open and bright atrium-style design features two staterooms, two full heads and the laundry area. Full beam master, and versatile VIP. Very expensive water maker on board for those long-range cruises!

Always professionally and proactively maintained, she will make the next owner an extremely happy boater. Call for more details and a viewing.

## Basic Information

---

**Category:** Motor Yacht

**Model Year:** 2015

**Year Built:** 2015

**Country:** United States

## Dimensions

---

**LOA:** 53' (16.15mm)

**Beam:** 15.91

**Max Draft:** 4' 8" (1.42mm)

---

## Speed, Capacities and Weight

---

**Cruise Speed:** 30 Knots Kts. (35 MPH)

**Max Speed:** 35 Knots Kts. (40 MPH)

**Water Capacity:** 200 Gallons

**Holding Tank:** 86 Gal Gallons

**Fuel Capacity:** 654 Gal Gallons

---

## Accommodations

---

**Total Cabins:** 3

**Total Heads:** 2

---

## Hull and Deck Information

---

**Hull Material:** Fiberglass

---

## Engine Information

---

**Engines:** 2

**Manufacturer:** Volvo Penta

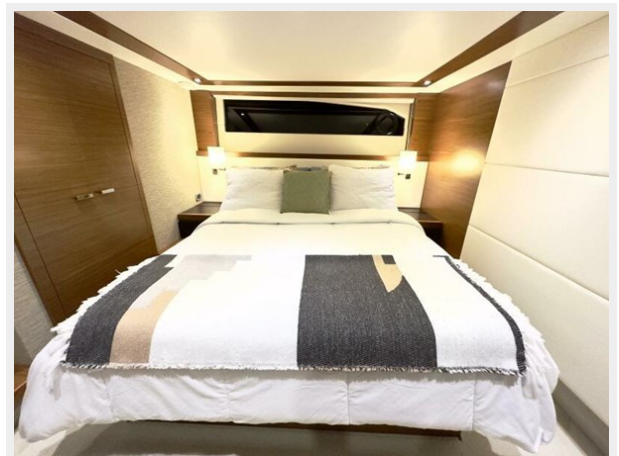
**Engine Type:** Inboard

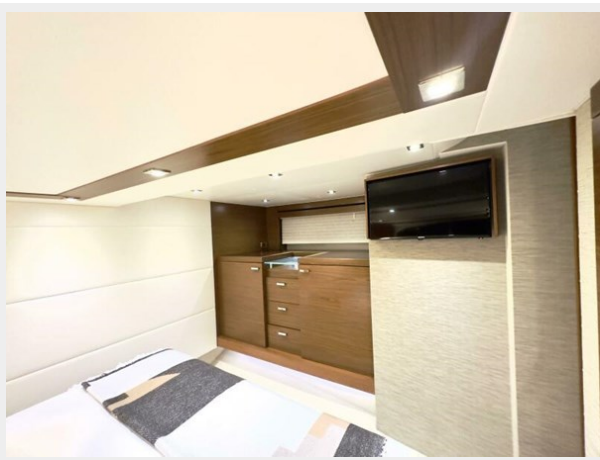
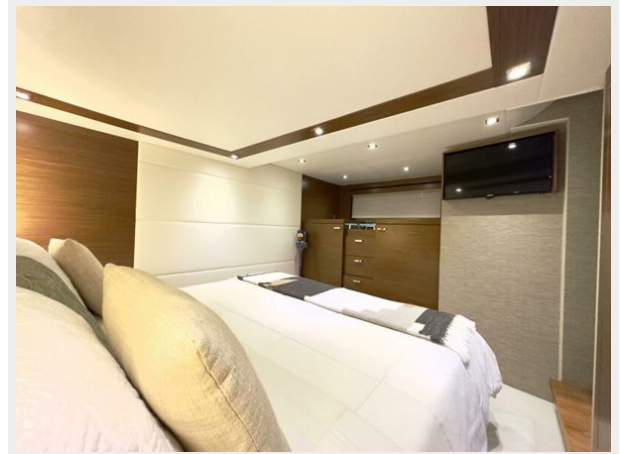
**Fuel Type:** Diesel

# PHOTOS

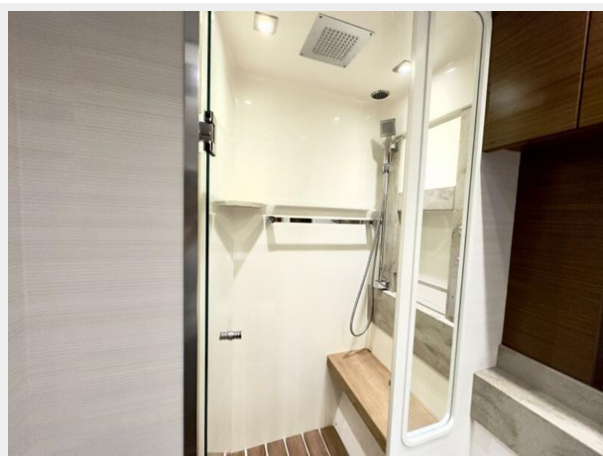


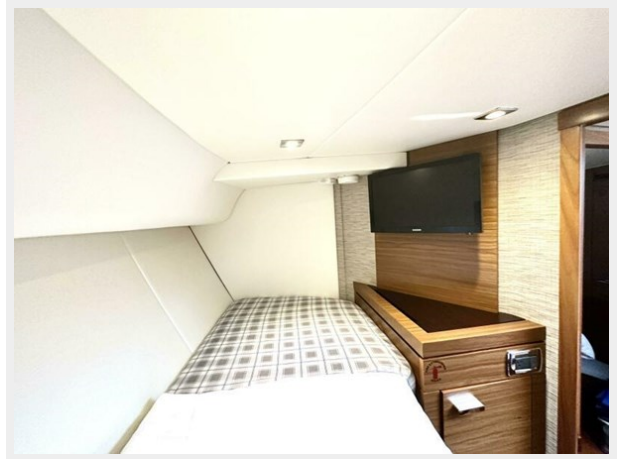
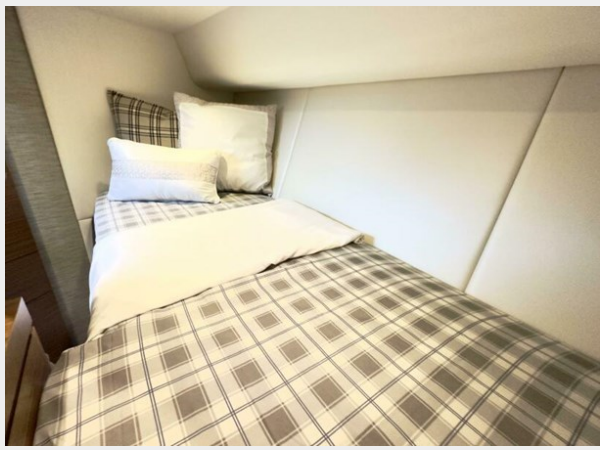














# CONTACTS

---

Andrey Shestakov, leading yacht broker of the sales department of Shestakov Yacht Sales Inc. Shestakov Yacht Sales Inc., the official representative of the Miami/Fort Lauderdale FL headquarters.

## Contact details

---

Email: [andrey@shestakovyachtsales.com](mailto:andrey@shestakovyachtsales.com)

Web: [shestakovyachtsales.com/en/](http://shestakovyachtsales.com/en/)

## Telephones

---

USA: +1(954)274-4435

## Office hours

---

Monday – Saturday: **9:00 - 21:00** EDT

Sunday: **closed**

## Address

---



Harbour Towne Marina, 850 NE 3rd St,  
STE 213, Dania, FL 33004