

SAINT GERMAIN — CUSTOM



Builder: CUSTOM

Year Built: 2015

Model: Displacement

Price: \$2,780,000 USD

Location: Brazil

LOA: 106' 8" (32.5mm)

Beam: 19.58

Max Draft: 8' (2.44mm)

Cruise Speed: 12 Knots Kts. (14 MPH)

Max Speed: 16 Knots Kts. (18 MPH)

Our experienced yacht broker, Andrey Shestakov, will help you choose and buy a yacht that best suits your needs **Saint Germain — CUSTOM** from our catalogue. Presently, at Shestakov Yacht Sales Inc., we have a wide variety of yachts available on our sale's list. We also work in close contact with all the big yacht manufacturers from all over the world.

If you would like to buy a yacht **Saint Germain — CUSTOM** or would like help answering any questions concerning purchasing, selling or chartering a yacht, please call **+1(954)274-4435**

TABLE OF CONTENTS

TABLE OF CONTENTS	2
SPECIFICATIONS	4
Overview	4
Basic Information	4
Dimensions	4
Speed, Capacities and Weight	5
Accommodations	5
Hull and Deck Information	5
Engine Information	5
PHOTOS	6
Main Salon - fwd view	6
Main Salon - Dinner	6
Main Salon - Dinner - sunlight	6
Main Deck - TV Lounge - fwd view wide	6
Main Deck - TV Lounge - port side view	6
Main Deck - TV Lounge - fwd view	6
Master Cabin	7
Main head	7
Double Cabin	7
Double Cabin	7
Galley	7
Wheelhouse	7
Main deck aft	8
Main deck entrance	8
Main deck aft	8
Flybridge	8
Flybridge	8
Deck Jacuzzi Detail	8

Flybridge	9
Side view	9
FWD view	9
stern view	9
CONTACTS	10
Contact details	10
Telephones	10
Office hours	10
Address	10

SPECIFICATIONS

Overview

Motor Yacht Saint Germain is a complete rebuild of one of 6 Benetti hulls built under concession by MCP Yachts in Brazil.

Yacht was entirely remanufactured in 2015 by expert marine engineers, with new engines, new electric panels, new electric and plumbing, being only the hull original steel.

All documents regarding the rebuild project are available to any buyer for inspection.

Excellent option for any buyer looking for a low cost, steel yacht.

- 5 Staterooms, (4 en-suite), being 1 master, 3 double, 1 twin
- Deck jacuzzi
- Stabilizers underway and at anchor
- Steel hull
- Very low consumption (80L/H)

Basic Information

Category: Displacement

Sub Category: Displacement

Model Year: 2015

Year Built: 2015

Country: Brazil

Dimensions

LOA: 106' 8" (32.5mm)

Beam: 19.58

Max Draft: 8' (2.44mm)

Speed, Capacities and Weight

Cruise Speed: 12 Knots Kts. (14 MPH)

Cruise Speed Range: 2800

Max Speed: 16 Knots Kts. (18 MPH)

Gross Tonnage: 109 Pounds

Accommodations

Total Cabins: 5

Hull and Deck Information

Hull Material: Steel

Deck Material: Teak and Steel

Hull Configuration: Full Displacement

Hull Color: White

Exterior Designer: MCP Yachts Benetti

Engine Information

Engines: 2

Manufacturer: MAN

Engine Type: Inboard

Fuel Type: Diesel

PHOTOS

Main Salon - fwd view



Main Salon - Dinner



Main Salon - Dinner - sunlight



Main Deck - TV Lounge - fwd view wide



Main Deck - TV Lounge - port side view



Main Deck - TV Lounge - fwd view



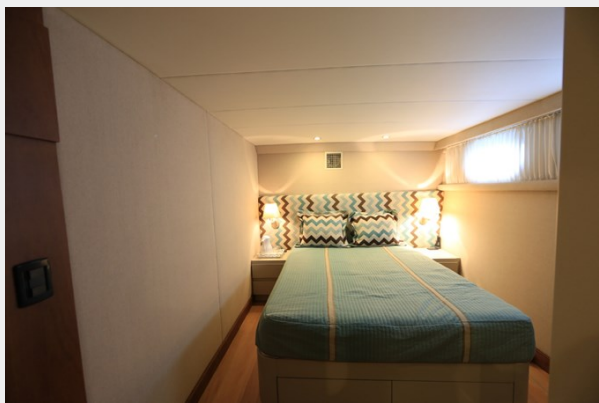
Master Cabin



Main head



Double Cabin



Double Cabin



Galley



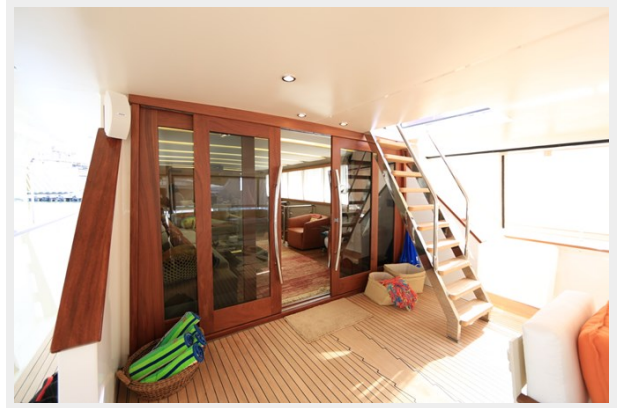
Wheelhouse



Main deck aft



Main deck entrance



Main deck aft



Flybridge



Flybridge



Deck Jacuzzi Detail



Flybridge



Side view



FWD view



stern view



CONTACTS

Andrey Shestakov, leading yacht broker of the sales department of Shestakov Yacht Sales Inc. Shestakov Yacht Sales Inc., the official representative of the Miami/Fort Lauderdale FL headquarters.

Contact details

Email: andrey@shestakovyachtsales.com

Web: shestakovyachtsales.com/en/

Telephones

USA: +1(954)274-4435

Office hours

Monday – Saturday: **9:00 - 21:00** EDT

Sunday: **closed**

Address



Harbour Towne Marina, 850 NE 3rd St,
STE 213, Dania, FL 33004