

## MYSTIC — MARINER



**Builder:** MARINER

**Year Built:** 2009

**Model:** trawler

**Price:** \$239,500 USD

**Location:** United States

**LOA:** 38' (11.58mm)

**Beam:** 13.91

**Min Draft:** 4' (1.22mm)

Our experienced yacht broker, Andrey Shestakov, will help you choose and buy a yacht that best suits your needs **Mystic — MARINER** from our catalogue. Presently, at Shestakov Yacht Sales Inc., we have a wide variety of yachts available on our sale's list. We also work in close contact with all the big yacht manufacturers from all over the world.

If you would like to buy a yacht **Mystic — MARINER** or would like help answering any questions concerning purchasing, selling or chartering a yacht, please call **+1(954)274-4435**

# TABLE OF CONTENTS

TABLE OF CONTENTS	2
SPECIFICATIONS	6
Overview	6
Basic Information	6
Dimensions	6
Speed, Capacities and Weight	6
Accommodations	6
Hull and Deck Information	6
Engine Information	6
PHOTOS	7
66_2801736_38_mariner_generator	7
67_2801736_38_mariner_inverter	7
68_2801736_38_mariner_battery_charger	7
69_2801736_38_mariner_battery_bank1	7
70_2801736_38_mariner_battery_bank2	7
71_2801736_38_mariner_battery_bank3	7
72_2801736_38_mariner_battery_bank4	8
20_2801736_38_mariner_flybridge_helm	8
21_2801736_38_mariner_flybridge_helmseats1	8
22_2801736_38_mariner_flybridge_helmseats2	8
23_2801736_38_mariner_flybridge_port_seating1	8
24_2801736_38_mariner_flybridge_port_seating2	8
25_2801736_38_mariner_hinged_radar_arch	9
26_2801736_38_mariner_trunk_cabin_forward	9
27_2801736_38_mariner_trunk_cabin_aft	9
28_2801736_38_mariner_trunk_cabin_wetbar	9
29_2801736_38_mariner_trunk_cabin_bbq_grill	9
30_2801736_38_mariner_aftdeck	9

---

31_2801736_38_mariner_aftdeck_port	10
32_2801736_38_mariner_aftdeck_starboard	10
33_2801736_38_mariner_swimplatform	10
34_2801736_38_mariner_tender	10
35_2801736_38_mariner_tender_davits	10
36_2801736_38_mariner_salon_forward	10
37_2801736_38_mariner_salon_aft	11
38_2801736_38_mariner_salon_port	11
39_2801736_38_mariner_salon_starboard	11
40_2801736_38_mariner_salon_port_seating	11
41_2801736_38_mariner_salon_starboard_seating	11
42_2801736_38_mariner_lower_helm1	11
44_2801736_38_mariner_lower_helmseat	12
43_2801736_38_mariner_lower_helm2	12
45_2801736_38_mariner_galley1	12
46_2801736_38_mariner_galley2	12
47_2801736_38_mariner_galley_sinks	12
48_2801736_38_mariner_master_stateroom	12
49_2801736_38_mariner_master_stateroom_port	13
50_2801736_38_mariner_master_stateroom_starboard	13
52_2801736_38_mariner_master_stateroom_head	13
51_2801736_38_mariner_master_stateroom_forward	13
53_2801736_38_mariner_master_stateroom_shower	13
54_2801736_38_mariner_guest_stateroom	13
55_2801736_38_mariner_guest_stateroom_port	14
56_2801736_38_mariner_guest_stateroom_starboard	14
57_2801736_38_mariner_guest_stateroom_head	14
58_2801736_38_mariner_engine_room_forward	14
59_2801736_38_mariner_engine_room_aft	14

---

60_2801736_38_mariner_main_engine1	14
61_2801736_38_mariner_main_engine2	15
62_2801736_38_mariner_racor_fuel_filter	15
63_2801736_38_mariner_water_heater	15
64_2801736_38_mariner_electrical_panel	15
65_2801736_38_mariner_generator_sound_box	15
0_2801736_38_mariner_starboard_forward_profile	15
1_2801736_38_mariner_starboard_profile	16
2_2801736_38_mariner_starboard_aft_profile	16
3_2801736_38_mariner_port_forward_profile	16
4_2801736_38_mariner_port_aft_profile	16
5_2801736_38_mariner_aft_profile1	16
6_2801736_38_mariner_aft_profile2	16
7_2801736_38_mariner_anchor_windlass1	17
8_2801736_38_mariner_anchor_windlass2	17
9_2801736_38_mariner_foredeck1	17
10_2801736_38_mariner_foredeck2	17
12_2801736_38_mariner_port_side_deck1	17
11_2801736_38_mariner_foredeck_aft	17
13_2801736_38_mariner_port_side_deck2	18
14_2801736_38_mariner_starboard_side_deck1	18
15_2801736_38_mariner_starboard_side_deck2	18
16_2801736_38_mariner_flybridge_forward	18
17_2801736_38_mariner_flybirdge_aft	18
18_2801736_38_mariner_flybridge_port	18
19_2801736_38_mariner_flybridge_starboard	19
CONTACTS	20
Contact details	20
Telephones	20

Office hours	20
Address	20

---

# SPECIFICATIONS

---

## Overview

---

Mystic is a 2009 38' Mariner Seville Double Cabin trawler. She offers a single Cummins 425 HP main engine, Fisher Panda 6 kW generator, Magnum Energy 2,000 watt inverter, Vetus bow and stern thrusters, KVH Tracvision satellite TV system, Furuno electronics, Vesper AIS and a two stateroom two head layout with the full-beam master stateroom being aft. Mystic is Great Loop capable and is presently in storage on the hard for the hurricane season, but she is accessible for inspection. Located in Port Charlotte, Florida.

## Basic Information

---

**Category:** trawler

**Model Year:** 2009

**Year Built:** 2009

**Country:** United States

## Dimensions

---

**LOA:** 38' (11.58mm)

**Beam:** 13.91

**Min Draft:** 4' (1.22mm)

## Speed, Capacities and Weight

---

**Water Capacity:** 150 Gallons

**Holding Tank:** 45 Gal Gallons

**Fuel Capacity:** 400 Gal Gallons

## Accommodations

---

**Total Cabins:** 2

## Hull and Deck Information

---

**Hull Material:** Fiberglass

## Engine Information

---

**Engines:** 1

**Manufacturer:** Cummins

# PHOTOS

66\_2801736\_38\_mariner\_generator



67\_2801736\_38\_mariner\_inverter



68\_2801736\_38\_mariner\_battery\_charger



69\_2801736\_38\_mariner\_battery\_bank1



70\_2801736\_38\_mariner\_battery\_bank2



71\_2801736\_38\_mariner\_battery\_bank3



72\_2801736\_38\_mariner\_battery\_bank4



20\_2801736\_38\_mariner\_flybridge\_helm



21\_2801736\_38\_mariner\_flybridge\_helmseats1



22\_2801736\_38\_mariner\_flybridge\_helmseats2



23\_2801736\_38\_mariner\_flybridge\_port\_seating1



24\_2801736\_38\_mariner\_flybridge\_port\_seating2





25\_2801736\_38\_mariner\_hinged\_radar\_arch



26\_2801736\_38\_mariner\_trunk\_cabin\_forward



27\_2801736\_38\_mariner\_trunk\_cabin\_aft



28\_2801736\_38\_mariner\_trunk\_cabin\_wetbar



29\_2801736\_38\_mariner\_trunk\_cabin\_bbq\_grill



30\_2801736\_38\_mariner\_aftdeck



31\_2801736\_38\_mariner\_afdeck\_port



32\_2801736\_38\_mariner\_afdeck\_starboard



33\_2801736\_38\_mariner\_swimplatform



34\_2801736\_38\_mariner\_tender



35\_2801736\_38\_mariner\_tender\_davits



36\_2801736\_38\_mariner\_salon\_forward



37\_2801736\_38\_mariner\_salon\_aft



38\_2801736\_38\_mariner\_salon\_port



39\_2801736\_38\_mariner\_salon\_starboard



40\_2801736\_38\_mariner\_salon\_port\_seating



41\_2801736\_38\_mariner\_salon\_starboard\_seating



42\_2801736\_38\_mariner\_lower\_helm1



43\_2801736\_38\_mariner\_lower\_helm2



44\_2801736\_38\_mariner\_lower\_helmseat



45\_2801736\_38\_mariner\_galley1



46\_2801736\_38\_mariner\_galley2



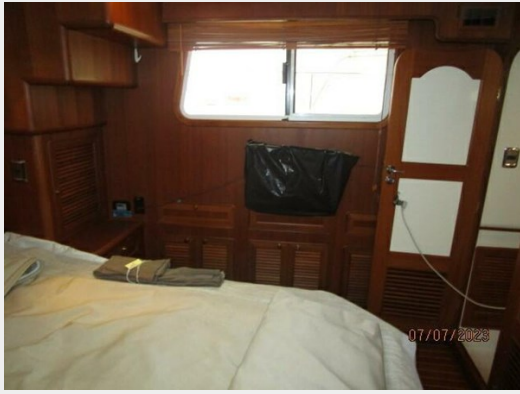
47\_2801736\_38\_mariner\_galley\_sinks



48\_2801736\_38\_mariner\_master\_stateroom



49\_2801736\_38\_mariner\_master\_stateroom\_port 50\_2801736\_38\_mariner\_master\_stateroom\_starboard



52\_2801736\_38\_mariner\_master\_stateroom\_head

51\_2801736\_38\_mariner\_master\_stateroom\_forward



53\_2801736\_38\_mariner\_master\_stateroom\_shower



54\_2801736\_38\_mariner\_guest\_stateroom



55\_2801736\_38\_mariner\_guest\_stateroom\_port 56\_2801736\_38\_mariner\_guest\_stateroom\_starboard



57\_2801736\_38\_mariner\_guest\_stateroom\_head



58\_2801736\_38\_mariner\_engine\_room\_forward



59\_2801736\_38\_mariner\_engine\_room\_aft



60\_2801736\_38\_mariner\_main\_engine1



61\_2801736\_38\_mariner\_main\_engine2



62\_2801736\_38\_mariner\_racor\_fuel\_filter



63\_2801736\_38\_mariner\_water\_heater



64\_2801736\_38\_mariner\_electrical\_panel



65\_2801736\_38\_mariner\_generator\_sound\_box



0\_2801736\_38\_mariner\_starboard\_forward\_profile



1\_2801736\_38\_mariner\_starboard\_profile



2\_2801736\_38\_mariner\_starboard\_aft\_profile



3\_2801736\_38\_mariner\_port\_forward\_profile



4\_2801736\_38\_mariner\_port\_aft\_profile



5\_2801736\_38\_mariner\_aft\_profile1



6\_2801736\_38\_mariner\_aft\_profile2





7\_2801736\_38\_mariner\_anchor\_windlass1



8\_2801736\_38\_mariner\_anchor\_windlass2



9\_2801736\_38\_mariner\_foredeck1



10\_2801736\_38\_mariner\_foredeck2



11\_2801736\_38\_mariner\_foredeck\_aft



12\_2801736\_38\_mariner\_port\_side\_deck1



13\_2801736\_38\_mariner\_port\_side\_deck2



14\_2801736\_38\_mariner\_starboard\_side\_deck1



15\_2801736\_38\_mariner\_starboard\_side\_deck2



16\_2801736\_38\_mariner\_flybridge\_forward



17\_2801736\_38\_mariner\_flybridge\_aft



18\_2801736\_38\_mariner\_flybridge\_port



19\_2801736\_38\_mariner\_flybridge\_starboard



# CONTACTS

---

Andrey Shestakov, leading yacht broker of the sales department of Shestakov Yacht Sales Inc. Shestakov Yacht Sales Inc., the official representative of the Miami/Fort Lauderdale FL headquarters.

## Contact details

---

Email:  
[andrey@shestakovyachtsales.com](mailto:andrey@shestakovyachtsales.com)

Web: [shestakovyachtsales.com/en/](http://shestakovyachtsales.com/en/)

## Telephones

---

USA: +1(954)274-4435

## Office hours

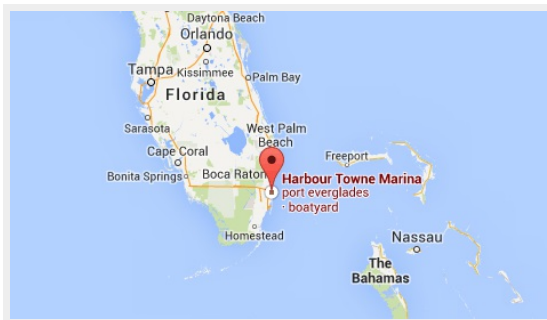
---

Monday – Saturday: **9:00 - 21:00 EDT**

Sunday: **closed**

## Address

---



Harbour Towne Marina, 850 NE 3rd St,  
STE 213, Dania, FL 33004