

MAISIE MCGOO — JOHN WILLIAMS BOAT COMPANY



Builder:

JOHN WILLIAMS BOAT COMPANY

Year Built: 2009

Model: cruiser

Price: \$825,000 USD

Location: United States

LOA: 38' 4" (11.68mm)

Beam: 12.66

Max Draft: 3' 6" (1.07mm)

Cruise Speed: 14 Knots Kts. (16 MPH)

Max Speed: 17 Knots Kts. (20 MPH)

Our experienced yacht broker, Andrey Shestakov, will help you choose and buy a yacht that best suits your needs **MAISIE MCGOO — JOHN WILLIAMS BOAT COMPANY** from our catalogue. Presently, at Shestakov Yacht Sales Inc., we have a wide variety of yachts available on our sale's list. We also work in close contact with all the big yacht manufacturers from all over the world.

If you would like to buy a yacht **MAISIE MCGOO — JOHN WILLIAMS BOAT COMPANY** or would like help answering any questions concerning purchasing, selling or chartering a yacht, please call **+1(954)274-4435**

TABLE OF CONTENTS

TABLE OF CONTENTS	2
SPECIFICATIONS	4
Overview	4
Basic Information	4
Dimensions	4
Speed, Capacities and Weight	4
Accommodations	4
Hull and Deck Information	5
Engine Information	5
PHOTOS	6
Helm	6
Pilothouse Fwd	6
Copilot Seat	6
Pilothouse Aft Port	6
Companionway	7
Pilothouse Aft Stbd	7
Cabin Queen Berth	7
Cabin with Bar	7
Cabin Storage	8
Galley	8
Head, Vanity	8
Head and Stall Shower	8
Looking Aft	9
Cabintop	9
Butterfly Hatch	9
Cockpit	9
Cockpit Aft	10
CONTACTS	11

Contact details	11
Telephones	11
Office hours	11
Address	11

SPECIFICATIONS

Overview

MAISIE MCGOO is the flagship of the John Williams Boat Company. With her elegantly appointed traditional furnishings, long sleek hull design, varnished teak cabin house and Sitka spruce mast she presents herself as a strikingly beautiful and majestic looking yacht.

Basic Information

Category: cruiser

Sub Category: Downeast

Model Year: 2009

Year Built: 2009

Country: United States

Dimensions

LOA: 38' 4" (11.68mm)

LWL: 36' 4" (11.07mm)

Beam: 12.66

Max Draft: 3' 6" (1.07mm)

Speed, Capacities and Weight

Cruise Speed: 14 Knots Kts. (16 MPH)

Max Speed: 17 Knots Kts. (20 MPH)

Water Capacity: 200 Gallons

Holding Tank: 35 Gal Gallons

Fuel Capacity: 250 Gal Gallons

Accommodations

Total Cabins: 1

Hull and Deck Information

Hull Material: Fiberglass

Deck Material: Teak

Engine Information

Engines: 1

Manufacturer: Cummins

Engine Type: Inboard

Fuel Type: Diesel

PHOTOS

Pilothouse Fwd



Helm



Copilot Seat



Pilothouse Aft Port



Pilothouse Aft Stbd



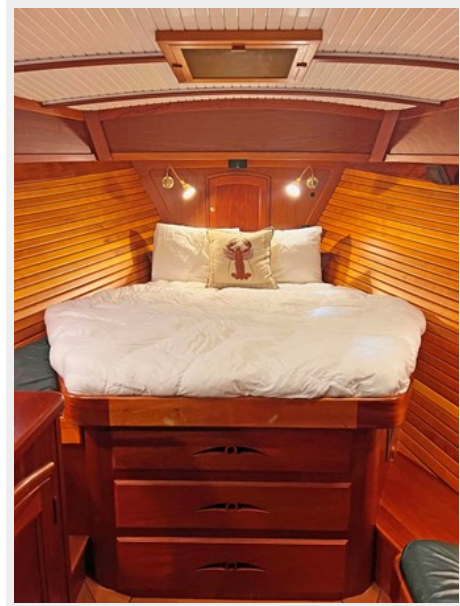
Companionway



Cabin with Bar



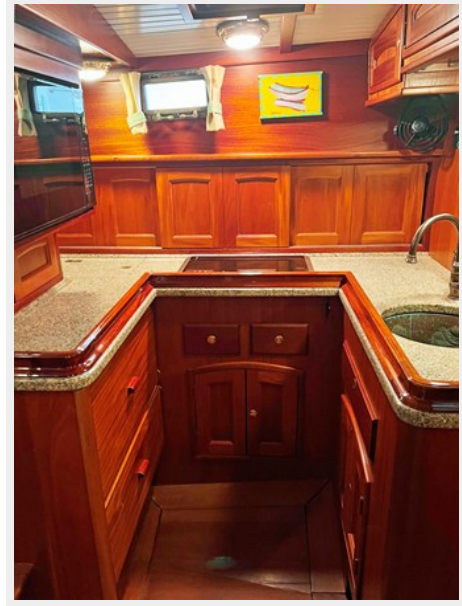
Cabin Queen Berth



Cabin Storage



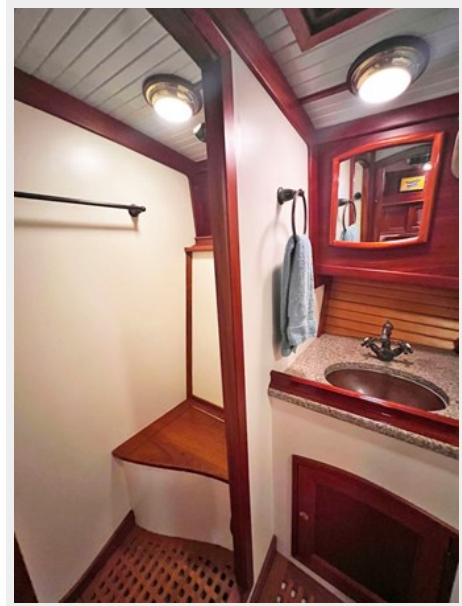
Galley



Head, Vanity



Head and Stall Shower



Looking Aft



Cabintop



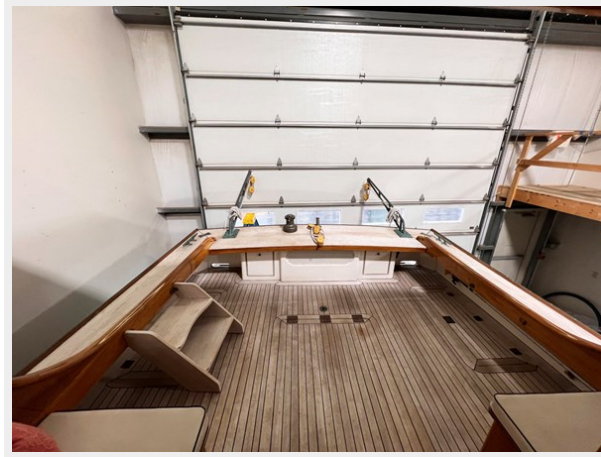
Butterfly Hatch



Cockpit



Cockpit Aft



CONTACTS

Andrey Shestakov, leading yacht broker of the sales department of Shestakov Yacht Sales Inc. Shestakov Yacht Sales Inc., the official representative of the Miami/Fort Lauderdale FL headquarters.

Contact details

Email: andrey@shestakovyachtsales.com

Web: shestakovyachtsales.com/en/

Telephones

USA: +1(954)274-4435

Office hours

Monday – Saturday: **9:00 - 21:00** EDT

Sunday: **closed**

Address



Harbour Towne Marina, 850 NE 3rd St,
STE 213, Dania, FL 33004