

WOLF — GRAND BANKS



Builder: GRAND BANKS

Year Built: 2007

Model: cruiser

Price: PRICE ON APPLICATION

Location: United States

LOA: 46' 5" (14.15mm)

Beam: 14.58

Max Draft: 3' 11" (1.19mm)

Cruise Speed: 23 Knots Kts. (26 MPH)

Our experienced yacht broker, Andrey Shestakov, will help you choose and buy a yacht that best suits your needs **WOLF — GRAND BANKS** from our catalogue. Presently, at Shestakov Yacht Sales Inc., we have a wide variety of yachts available on our sale's list. We also work in close contact with all the big yacht manufacturers from all over the world.

If you would like to buy a yacht **WOLF — GRAND BANKS** or would like help answering any questions concerning purchasing, selling or chartering a yacht, please call +1(954)274-4435

TABLE OF CONTENTS

TABLE OF CONTENTS	2
SPECIFICATIONS	4
Overview	4
Basic Information	4
Dimensions	4
Speed, Capacities and Weight	4
Accommodations	4
Hull and Deck Information	5
Engine Information	5
PHOTOS	6
Starboard Bow at Dock	6
Pilothouse Salon Wide View	6
Salon Forward	6
Helm Area	6
Bow and Stern Thruster Controls	7
Helm	7
Main Electrical Panel	7
Settee Looking Forward	7
Settee Looking Aft	8
Galley Looking Aft	8
Galley	8
Starboard Salon Galley Extension	8
Passageway Below and Forward	9
Forward Cabin	9
Hanging Locker Forward Cabin	9
Forward Cabin Looking Aft	9
Head Looking Forward	10
Head and Shower	10

Guest Cabin	10
Pantry and Laundry Cabin	10
Steps w Storage	10
Anchor Pulpit Detail	10
Foredeck	11
Proper Side Decks	11
Cockpit Looking Forward	11
Cockpit Settee Looking Aft	11
Aft Stbd Qtr	11
Swim Platform Deck Chairs	11
Port Quarter w Tender	12
Swim Platform and Freedom Lift	12
KVH Sat Dome	12
Cockpit Stereo Remote	12
CAT Diesels	13
Port Engine	13
20 Knot Cruise	13
22 Knot Cruise	13
24 Knot Cruise	14
Economical Cruise	14
CONTACTS	15
Contact details	15
Telephones	15
Office hours	15
Address	15

SPECIFICATIONS

Overview

The Eastbay 45SX sedan express cruiser with her Ray Hunt designed deep-V hull and Grand Banks build- quality is the gold standard for this class

Basic Information

Category: cruiser

Sub Category: Downeast

Model Year: 2007

Year Built: 2007

Country: United States

Dimensions

LOA: 46' 5" (14.15mm)

LWL: 41' 9" (12.73mm)

Beam: 14.58

Max Draft: 3' 11" (1.19mm)

Speed, Capacities and Weight

Cruise Speed: 23 Knots Kts. (26 MPH)

Gross Tonnage: 19.1 Pounds

Water Capacity: 145 Gallons

Fuel Capacity: 510 Gal Gallons

Accommodations

Total Cabins: 2

Sleeps: 4

Total Heads: 1

Hull and Deck Information

Hull Material: Fiberglass

Deck Material: Nonskid painted

Hull Color: Flag Blue

Hull Designer: C. Raymond Hunt

Engine Information

Engines: 2

Manufacturer: Caterpillar

Engine Type: Inboard

Fuel Type: Diesel

PHOTOS

Starboard Bow at Dock



Pilothouse Salon Wide View



Salon Forward



Helm Area



Bow and Stern Thruster Controls

Helm



Main Electrical Panel



Settee Looking Forward



Settee Looking Aft



Galley Looking Aft



Galley



Starboard Salon Galley Extension



Passageway Below and Forward



Forward Cabin



Forward Cabin Looking Aft



Hanging Locker Forward Cabin



Head Looking Forward



Head and Shower



Guest Cabin



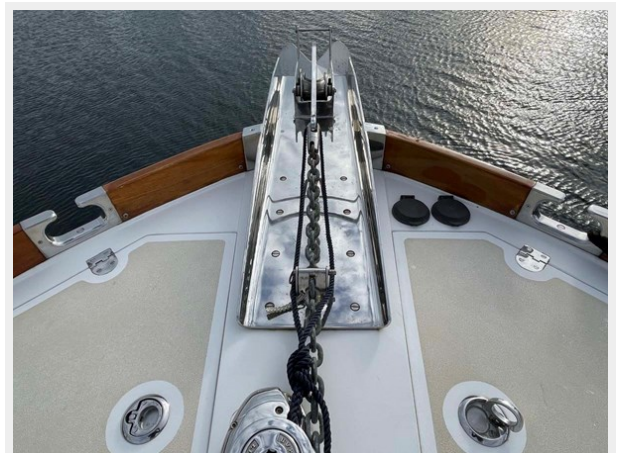
Pantry and Laundry Cabin



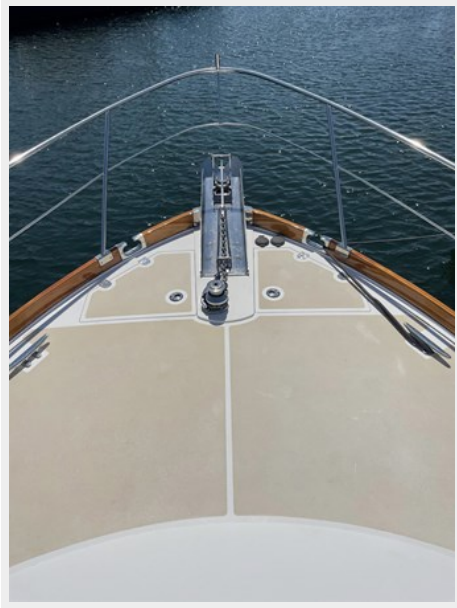
Steps w Storage



Anchor Pulpit Detail



Foredeck



Proper Side Decks



Cockpit Looking Forward



Cockpit Settee Looking Aft



Aft Stbd Qtr



Swim Platform Deck Chairs



Swim Platform and Freedom Lift



Port Quarter w Tender



KVH Sat Dome



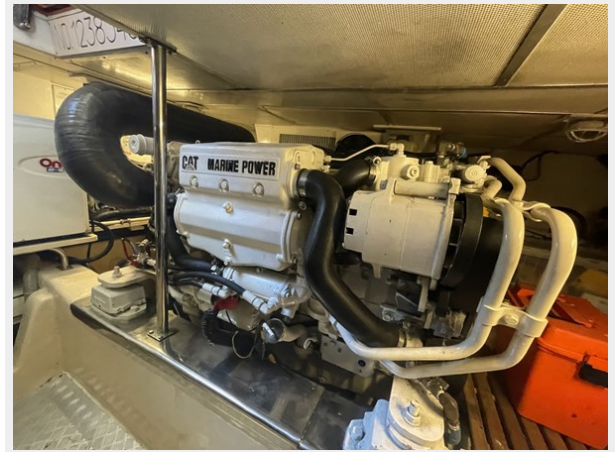
Cockpit Stereo Remote



CAT Diesels



Port Engine



20 Knot Cruise



22 Knot Cruise



24 Knot Cruise



Economical Cruise



CONTACTS

Andrey Shestakov, leading yacht broker of the sales department of Shestakov Yacht Sales Inc. Shestakov Yacht Sales Inc., the official representative of the Miami/Fort Lauderdale FL headquarters.

Contact details

Email: andrey@shestakovyachtsales.com

Web: shestakovyachtsales.com/en/

Telephones

USA: +1(954)274-4435

Office hours

Monday – Saturday: **9:00 - 21:00** EDT

Sunday: **closed**

Address



Harbour Towne Marina, 850 NE 3rd St,
STE 213, Dania, FL 33004