

KISMET — PRINCESS YACHTS



Builder: PRINCESS YACHTS

Year Built: 2023

Model: Flybridge

Price: \$2,695,000 USD

Location: United States

LOA: 55' (16.76mm)

Beam: 16

Max Draft: 4' 10" (1.47mm)

Our experienced yacht broker, Andrey Shestakov, will help you choose and buy a yacht that best suits your needs **Kismet — PRINCESS YACHTS** from our catalogue. Presently, at Shestakov Yacht Sales Inc., we have a wide variety of yachts available on our sale's list. We also work in close contact with all the big yacht manufacturers from all over the world.

If you would like to buy a yacht **Kismet — PRINCESS YACHTS** or would like help answering any questions concerning purchasing, selling or chartering a yacht, please call **+1(954)274-4435**

TABLE OF CONTENTS

TABLE OF CONTENTS	2
SPECIFICATIONS	5
Overview	5
Basic Information	9
Dimensions	9
Speed, Capacities and Weight	9
Accommodations	9
Hull and Deck Information	10
Engine Information	10
PHOTOS	11
2	11
3	11
4	11
5	11
6	11
7	11
8	12
9	12
10	12
11	12
12	12
13	12
14	13
15	13
16	13
17	13
18	13
19	13

20	14
21	14
22	14
23	14
24	14
25	14
26	15
27	15
Files-707	15
Files-708	15
Files-709	15
Files-710	15
Files-711	16
Files-712	16
Files-713	16
Files-714	16
Files-715	16
Files-716	16
Files-717	17
Files-718	17
Files-719	17
Files-720	17
Files-721	17
Files-722	17
Files-723	18
Files-724	18
Files-725	18
Files-726	18
Files-727	18

Files-728	18
Files-729	19
Files-730	19
Files-731	19
Files-732	19
Files-733	19
Files-734	19
Files-735	20
Files-736	20
Files-737	20
Files-738	20
Files-739	20
Files-740	20
Files-741	21
Files-737	21
Files-738	21
Files-739	21
Files-740	21
Files-741	21
Files-742	22
Files-743	22
Files-744	22
Files-745	22
CONTACTS	23
Contact details	23
Telephones	23
Office hours	23
Address	23

SPECIFICATIONS

Overview

Delivered less than a year ago, this F55 is a unique opportunity to own, essentially, a new boat without the wait for a new build! The boat was thoughtfully and meticulously ordered from Princess with no expense spared for factory customizations, options, and upgrades. Used exclusively in the primarily fresh waters of the Chesapeake Bay, the boat has been lightly cruised and is ready for immediate delivery!

Reduced 100K, the boat is in the water and available for a winter survey and sea trial.

Synonymous with quality and reliability, Princess is one of Europe's finest builders with a longstanding reputation for using the finest materials and skipping no corners in production. Solidly constructed, Princess produces boats that are not only robust, but also elegant with a level of fit and finish seldom found from production builders. Unlike other European brands focused on being as light as possible, the F55 weighs in over 50,000 pounds. This, coupled with the famous Princess deep-vee hull and a generously sized Seakeeper 9, make the F55 tremendously stable in rough waters and a true *blue water boat*. Powered with a pair of Volvo D13 inboards with variable speed bow and stern thrusters, all integrated into a joystick, the boat has all the maneuverability of a pod boat, but without the added maintenance and complications.

A perfect size, the F55 is small enough for a couple to handle without issues, but big enough for three staterooms, ample outdoor area, and a generous salon. Customized with a combination SpotZero water maker and purifier, ElectroSea Clearline System, Pepwave WiFi system, and Williams Sportjet 345 tender, the boat is perfectly setup for extended cruising. Below is a list of notable upgrades, customizations, and options (click "Other Details" for full list):

- Joystick docking control, integrates engines and variable speed bow and stern thruster
- ElectroSea CL-990-X1.5 Clearline Control System – greatly reduces need for AC strainer cleaning
- Pepwave BR1 Pro 5G cell-based onboard WiFi system with UPS backup for uninterrupted use when switching AC power source
- Combination SpotZero XZII water maker and water purifier – producing truly *drinkable* fresh water
- YachtController wireless docking station with joystick, thruster, and windlass integration
- Seakeeper 9 gyro stabilizer
- Generator, Engine, SeaKeeper, and tender serviced (11/23)
- 2023 Williams Sportjet 345 with 90hp Rotax
 - Standard white tubes with white vinyl upholstery
 - Teak footwells and platform
 - Digital depth sounder

- Overall cover
- Intelligent neutral reverse bucket
- **GOST Apparition security and monitoring system**
 - High water sensors in forward, mid, and aft bilge
 - Low voltage sensor (house and start batteries)
 - Salon door contact
- **Yacht Safe Air Purification System** (four zones)
- **Cockpit docking station**
- **Electric griddle/BBQ** fitted to flybridge wetbar (Kenyon)
- **Icemaker** fitted in aft salon
- All exterior **tables finished in high-gloss**
- **JL Audio exterior speakers upgrade**
- **ALLURE package I** (with painted hardtop)
 - Interior Styling Includes
 - Quilting detail with contrast piping and paneling to helm areas
 - Exterior Styling Includes:
 - Quilting detail with contrast piping and paneling to flybridge helm seats
 - Teak step nosing upgrade (includes transom, flybridge, foredeck)
 - Flybridge console sprayed in Oyster Grey
 - Flybridge wetbar sprayed in Oyster Grey
 - Hardtop sprayed in Oyster Grey
 - Foredeck sunbed cushions and adjustable headrests and reticulated foam
 - Exterior upholstery in comfort exterior III Met Ice with Macadamia contrast panels and piping
- **Twin 16" Garmin displays** at each helm station – with **Volvo Penta Glass Cockpit** integration
- **Electro-hydraulic swim platform** (450 kg / 992 lbs)
- **Underwater lighting** (Lumishore EOS TIX403 to transom w/ STV2204i controller (4))
- All interior carpets and sofas **treated for stain resistance**
- **Custom port side lounge** in master stateroom
- Powered **double bed conversion** in guest stateroom
- **Hardtop with electric opening** middle section
 - **Exterior lighting upgrade package**, includes:
- Low level accent strip lights below flybridge wetbar and console, accent spots (3) on transom, additional 7 deck lights to side deck and foredeck area (12 total), pop up lanterns to flybridge forward dinette (2)
- **Garbage disposal** in galley
- **Teak decks throughout**
- Salon full size dining / coffee table with twin electrically operated leg mechanisms (in place of standard coffee or dining table)
- **110V outlets added in salon** cabinetry for future appliance installs
- **Removeable teak tender chocks** with trip-free padeye tie down system
- **All cabins with Fusion stereo system and TV integration**

The **teak-laid foredeck** features an **oversized sunpad** with **hinging backrests** for lounging. A **forward-facing bench seat** is aft of the **high-gloss teak cockpit table**, making the bow a perfect entertaining area at anchor or while enjoying a cocktail cruise. A **designated Fusion stereo** can either act as a stand-alone audio system or be tied together with the boat's other Fusion stereos. The **anchor locker** is extra deep, making it ideal for storing fenders without lugging them from the cockpit. A **freshwater washdown** is concealed for washing the anchor and chain when needed.

The **flybridge** features a **forward, port side helm**, opposite the starboard side lower helm. This gives great sight lines to either side whether docking port or starboard side to the dock. With a **complete Garmin electronics package** identical to the lower helm, the captain can decide on helm stations simply based on weather and preference, not based on equipment. The **hardtop has overhead lighting, upgraded JL speakers, and an electric opening soft hatch** for added sunlight and air flow. **Painted in Oyster Grey**, the hardtop helps Princess create their unique stylish, yet classic exterior lines.

A **flybridge wetbar** houses an **electric grill and sink**, aft of two helm seats. **L-shaped, starboard side companion seating** can be easily converted to a sun lounge with aft and forward-facing backrests. A massive **U-shaped seating** arrangement is in the aft part of the bridge, complete with a **beautiful high-gloss teak table** that folds out for large parties and folds in for easier seating access. With more seating than most other flybridge boats in class, the boat can host a small crowd on the bridge to keep the captain with guests and socializing.

The **transom** has a **electro-hydraulic swim platform with a lifting capacity just shy of 1,000lbs**. Included with the sale of the boat is a **2023 Williams Sportjet 345 with 90HP Rotax engine** ordered with **the intelligent neutral reverse bucket and digital depth finder**, among other options. **Removeable teak tender chocks** and a **removeable pad eye system** with flush mounted hardware, make the platform completely free of any trip hazards when the tender is deployed. Starboard and port **cockpit access** makes boarding easy, even with the tender raised.

A plush **C-shaped sofa** sits centerline in the **cockpit** with **high-gloss folding teak table** can be extended for formal dining or closed for more standing and sitting room. **Overhead and low-level lights** light up the cockpit, perfect for entertaining at night. The **Lumishore underwater lights** are controlled from an interface in the cockpit, right next to the dedicated **cockpit Fusion stereo**. A **foldout cockpit docking station** makes it very easy to back into a slip or dock starboard side. **Opening side boarding doors** on the port and starboard side provide ease of boarding from fixed piers.

Crew quarter access is cleverly hidden through the starboard side cockpit access steps. The crew quarter has a **single berth, head with shower, and sink**, making it a fully capable extra stateroom for kids or guests when needed. Because of the **6,000BTU air conditioning**, not only is it comfortable as a sleeping quarter, but when used as storage, it is climate-controlled, preventing items from getting too hot and protecting them from high humidity.

The **aft galley** completely opens up and integrates to the cockpit with a **hinging window and**

sliding doors. When open, a **bar** forms as the island galley countertop combines with an exterior countertop. The port side galley is sunken giving it more storage and standing room than the rest of the salon. The aft galley is most sought after arrangement in the industry as it keeps the galley central and close to the entertaining areas of the boat, not far from the salon or the cockpit. Plenty of **overhead and under-counter storage, a full-size refrigerator and freezer, induction cooktop, and convection oven** give a chef all the comforts of a home kitchen.

The **salon** sits forward with **opposing facing sofas** and an **electric high-low table**. The table is very versatile as it can be folded out and slide towards the sofa to act as a **dining table**, or folded closed and slide away from the sofa when being used as a **coffee table**. A **high-low 50" TV** is housed outboard of the starboard side sofa and is paired with the **overhead surround sound speakers**. With the boat's **Pepwave 5G WiFi system**, it's easy to stream from all the popular services without having to worry about the hassle and expense of Satellite TV.

Opening windows on the port and starboard side of the forward salon are lowered with the push of a button and help create cross ventilation on nice fall and spring days. The **lower helm** sits to the starboard side with a large windshield and excellent visibility. The **joystick and throttles** are ergonomically placed on the starboard side shelf, near the opening window, which gives excellent visibility when docking. **Dual 16" Garmin displays and a 7" Volvo display** are all networked together to give plenty of screen real estate for all types of displayed information. The helm is further complimented by a **Seakeeper display, searchlight control, bow and stern thruster control, and helm switches**.

Below deck, the full beam master stateroom has plenty of storage thanks in part to a large **starboard side closet and deep chest of drawers**. On the port side is a **custom sofa** in lieu of the settee in other F55's, perfect for lounging and watching TV in privacy, away from the salon. **Large hull side windows** flood the stateroom with natural light and **opening portholes** on either side make it easy to get fresh air. A **43" TV** sits on the forward bulkhead, easily seen from the bed or the lounge.

Both the **master and day head** feature **basin style sinks and mirrored medicine cabinets**. The **showers** have windows with blinds and **opening portholes** to air out after use. **Extractor fans and air conditioning vents** keep both heads well ventilated and cooled.

The **VIP stateroom** sits forward with a **centerline berth** that is mostly island style with room to get around and make the bed. **Overhead cabinetry and hanging lockers** on either side give plenty of storage area. **Hull side windows** on either side keep guests connected with the water and **opening portholes** make it easy to get fresh air. A **32" TV** sits on the aft bulkhead and is tied into the stateroom's **Fusion stereo for surround sound**. Day head access is ensuite through a port side door.

The **starboard side guest stateroom** has **two single berths**, that **slide together to make a larger bed** when hosting another couple. Keeping in tune with the rest of the staterooms, the guest stateroom is dressed with **overhead reading lights, richly appointed cabinetry, and designer materials**. A dedicated **Fusion stereo with surround sound speakers and 32" TV**

keep guests entertained.

This F55 is a unique opportunity to get an essentially new boat without the wait time for a new build. It was thoughtfully and meticulously optioned and customized from Princess.

Basic Information

Category: Flybridge

Sub Category: Flybridge

Model Year: 2023

Year Built: 2023

Country: United States

Dimensions

LOA: 55' (16.76mm)

Beam: 16

Max Draft: 4' 10" (1.47mm)

Speed, Capacities and Weight

Water Capacity: 161 Gallons

Holding Tank: 83 Gal Gallons

Fuel Capacity: 726 Gal Gallons

Accommodations

Total Cabins: 3

Total Berths: 4

Sleeps: 6

Total Heads: 2

Crew Cabin: 1

Crew Berths: 1

Crew Heads: 1

Hull and Deck Information

Hull Material: Fiberglass

Deck Material: Fiberglass

Hull Configuration: Modified Deep Vee

Hull Color: White

Engine Information

Engines: 2

Manufacturer: Volvo Penta

Engine Type: Inboard

Fuel Type: Diesel

PHOTOS

2



3



4



5



6



7



8



9



10



11



12



13



14



15



16



17



18



19



20



21



22



23



24



25



26



27



Files-707



Files-708



Files-709



Files-710



Files-711



Files-712



Files-713



Files-714



Files-715



Files-716



Files-717



Files-718



Files-719



Files-720



Files-721



Files-722



Files-723



Files-724



Files-725



Files-726



Files-727



Files-728



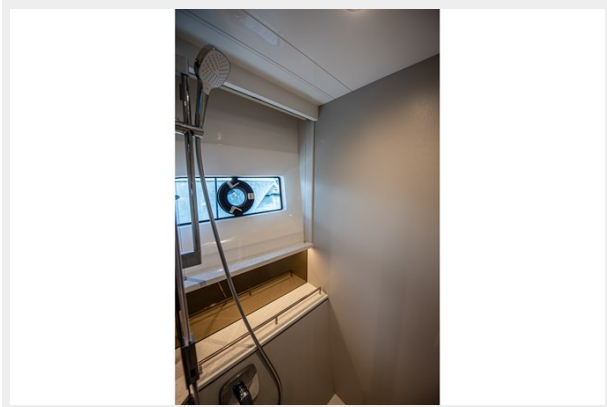
Files-729



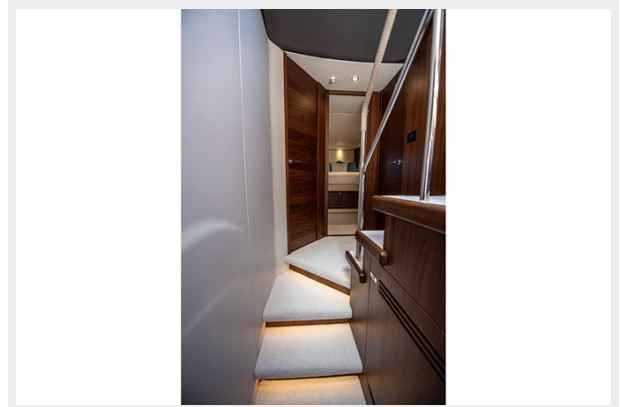
Files-730



Files-731



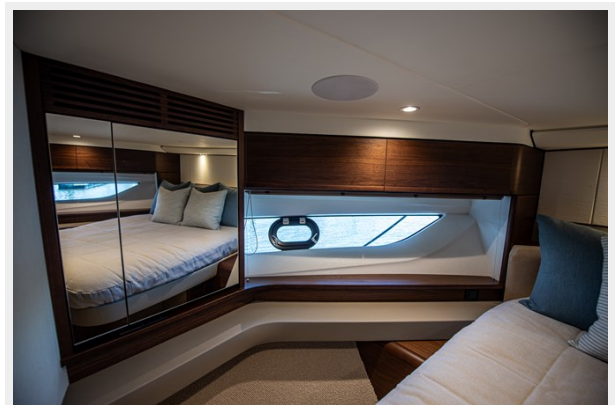
Files-732



Files-733



Files-734



Files-735



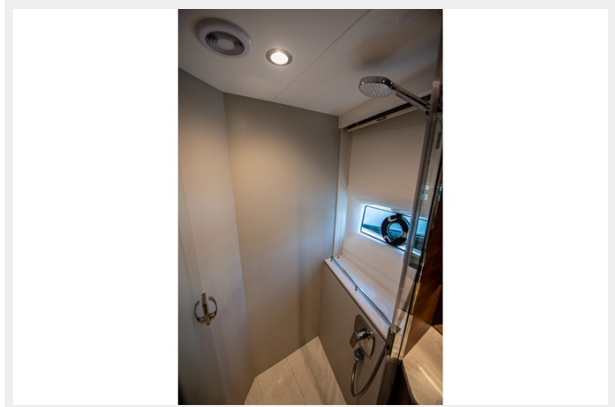
Files-736



Files-737



Files-738



Files-739



Files-740



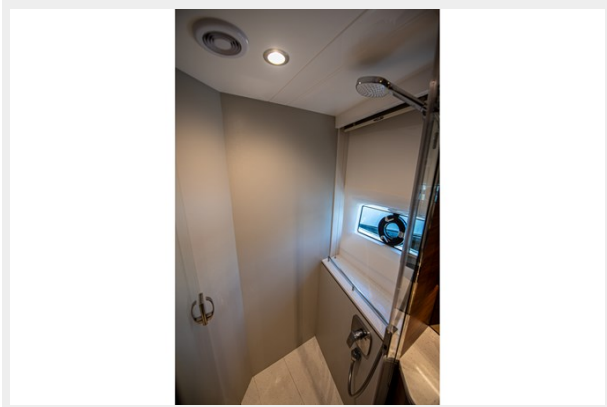
Files-741



Files-737



Files-738



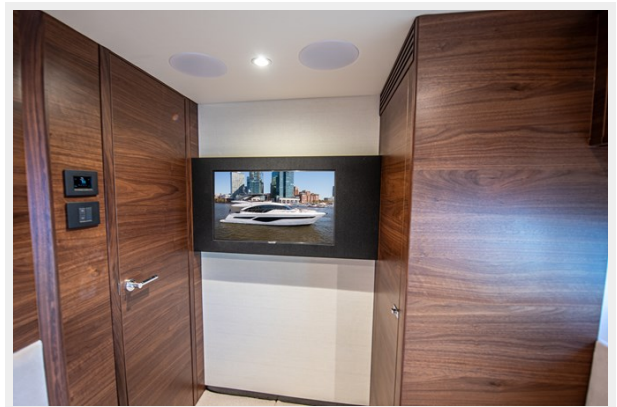
Files-739



Files-740



Files-741



Files-742



Files-743



Files-744



Files-745



CONTACTS

Andrey Shestakov, leading yacht broker of the sales department of Shestakov Yacht Sales Inc. Shestakov Yacht Sales Inc., the official representative of the Miami/Fort Lauderdale FL headquarters.

Contact details

Email: andrey@shestakovyachtsales.com

Web: shestakovyachtsales.com/en/

Telephones

USA: +1(954)274-4435

Office hours

Monday – Saturday: **9:00 - 21:00** EDT

Sunday: **closed**

Address



Harbour Towne Marina, 850 NE 3rd St,
STE 213, Dania, FL 33004