

WAIKIKI — INACE



Builder: INACE

Year Built: 2022

Model: expedition yacht

Price: \$7,490,000 USD

Location: Brazil

LOA: 90' (27.41m)

Cruise Speed: 10 Knots Kts. (12 MPH)

Max Speed: 13 Knots Kts. (15 MPH)

Our experienced yacht broker, Andrey Shestakov, will help you choose and buy a yacht that best suits your needs **Waikiki — INACE** from our catalogue. Presently, at Shestakov Yacht Sales Inc., we have a wide variety of yachts available on our sale's list. We also work in close contact with all the big yacht manufacturers from all over the world.

If you would like to buy a yacht **Waikiki — INACE** or would like help answering any questions concerning purchasing, selling or chartering a yacht, please call **+1(954)274-4435**

TABLE OF CONTENTS

TABLE OF CONTENTS	2
SPECIFICATIONS	4
Overview	4
Basic Information	4
Dimensions	4
Speed, Capacities and Weight	4
Accommodations	5
Hull and Deck Information	5
Engine Information	5
PHOTOS	6
Running - stbd	6
Port side	6
Aft Running	6
Bird-eye view	6
Aft bird-eye	6
Running - port	6
stbd ext	7
Beach club setup	7
Dinner salon	7
Main Salon - aft view	7
Main Salon - fwd view	7
Upper deck loung - TV setup	7
Wheelhouse	8
wheelhouse	8
upper deck aft	8
main deck fwd lounge	8
main deck fwd	8
main deck fwd2	8

main cabin	9
main cabin tv	9
main cabin office	9
main cabin head	9
head	9
main cabin shower view	9
head	10
double cabin1	10
double cabin2	10
double cabin2.2	10
twin cabin1	10
twin cabin2	10
pullman	11
galley	11
galley2	11
galley3	11
upper deck aft	11
crew mess	11
beach club	12
beach club sauna detail	12
main deck staircase	12
CONTACTS	13
Contact details	13
Telephones	13
Office hours	13
Address	13

SPECIFICATIONS

Overview

INACE FHI 90 for Sale!!! New on the International market!!!INACE Shipyard - Global reputation, with more than 40 years of experience and 900 vessels delivered.Highlights:- Steel Hull and Aluminum Superstructure;- 3 Decks with Jacuzzi;- Custom interior design by Marina Linhares;- Automation (Savant) for audio and video systems;- Sauna;- 5 Cabins (1 Master, 2 Vips, 2 Cabins with pullman beds, up to 12 guests);- Crew (2 Cabins and Crew mess - up to 6 Crew);- Cruise Speed/Top Speed: 10/13.5 knots;- 4,000 miles range (80 liters per hour);- Fins stabilizers;- Water maker (180 liters per hour);- Biocon marine sewage treatment system;- 2x Man Engines model D2868 LE425 (800 H.P. each) - Approx. 800 hours each);- 2x Onan Generators (55kW each) - Approx.1,415 / 1,426 hours;- 2 Wine Cellars;- 2 Icemakers;- Internet/Wifi;- RIB tender with outboard engine;- Designer/Builder: Fernando de Almeida Yacht Design / INACE Shipyard.

Basic Information

Category: expedition yacht

Sub Category: Expedition or Explorer

Model Year: 2022

Year Built: 2022

Country: Brazil

Dimensions

LOA: 90' (27.41mm)

Speed, Capacities and Weight

Cruise Speed: 10 Knots Kts. (12 MPH)

Cruise Speed Range: 3800

Max Speed: 13 Knots Kts. (15 MPH)

Max Speed Range: 2000 Kts.

Gross Tonnage: 230 Pounds

Water Capacity: 15000 Gallons

Holding Tank: 528.34 Gal Gallons

Fuel Capacity: 9246.02 Gal Gallons

Fuel Consumption: 21.13 Gal Gallons

Accommodations

Total Cabins: 5

Hull and Deck Information

Hull Material: Steel

Hull Configuration: Full Displacement

Hull Designer: INACE

Exterior Designer: Fernando de Almeida
Yacht Design

Interior Designer: Marina Linhares

Engine Information

Engines: 2

Manufacturer: MAN

Engine Type: Inboard

Fuel Type: Diesel

PHOTOS

Running - stbd



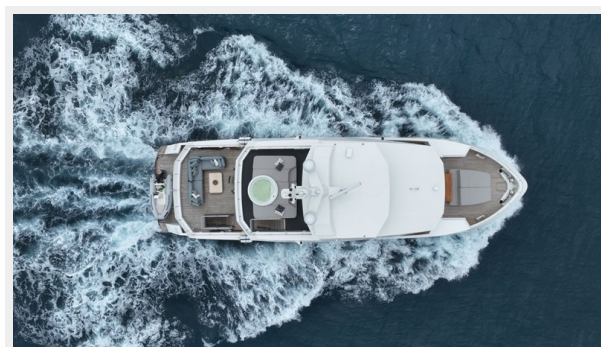
Port side



Aft Running



Bird-eye view



Aft bird-eye



Running - port



stbd ext



Beach club setup



Dinner salon



Main Salon - aft view



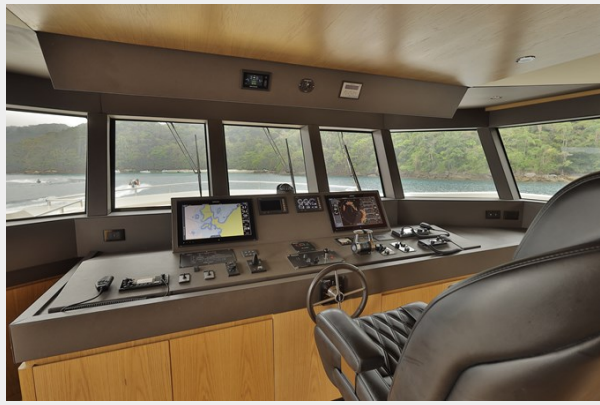
Main Salon - fwd view



Upper deck loung - TV setup



Wheelhouse



wheelhouse



upper deck aft



main deck fwd lounge



main deck fwd



main deck fwd2



main cabin



main cabin tv



main cabin office



main cabin head



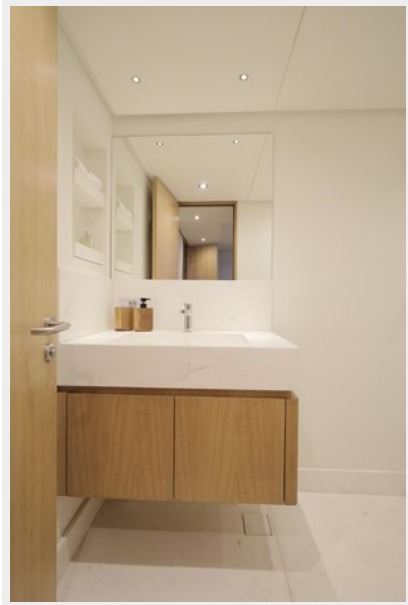
main cabin shower view



head



head



double cabin1



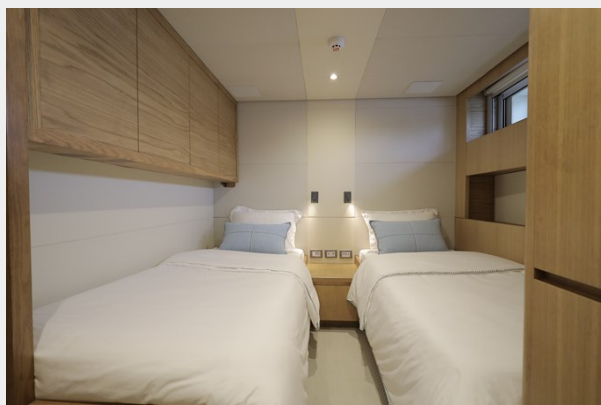
double cabin2



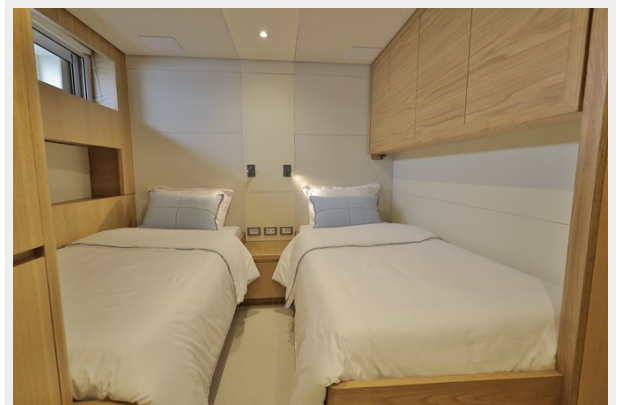
double cabin2.2



twin cabin1



twin cabin2



pullman



galley



galley2



galley3



upper deck aft



crew mess



beach club



beach club sauna detail



main deck staircase



CONTACTS

Andrey Shestakov, leading yacht broker of the sales department of Shestakov Yacht Sales Inc. Shestakov Yacht Sales Inc., the official representative of the Miami/Fort Lauderdale FL headquarters.

Contact details

Email: andrey@shestakovyachtsales.com

Web: shestakovyachtsales.com/en/

Telephones

USA: +1(954)274-4435

Office hours

Monday – Saturday: **9:00 - 21:00** EDT

Sunday: **closed**

Address



Harbour Towne Marina, 850 NE 3rd St,
STE 213, Dania, FL 33004