

## TIDE 'N KNOTS — GRADY-WHITE



**Builder:** GRADY-WHITE

**LOA:** 22' (6.71m)

**Year Built:** 2001

**Model:** cruiser

**Price:** \$39,000 USD

**Location:** United States

Our experienced yacht broker, Andrey Shestakov, will help you choose and buy a yacht that best suits your needs **Tide 'N Knots — GRADY-WHITE** from our catalogue. Presently, at Shestakov Yacht Sales Inc., we have a wide variety of yachts available on our sale's list. We also work in close contact with all the big yacht manufacturers from all over the world.

If you would like to buy a yacht **Tide 'N Knots — GRADY-WHITE** or would like help answering any questions concerning purchasing, selling or chartering a yacht, please call **+1(954)274-4435**

# TABLE OF CONTENTS

TABLE OF CONTENTS	2
SPECIFICATIONS	5
Overview	5
Basic Information	5
Dimensions	5
Speed, Capacities and Weight	5
Accommodations	5
Hull and Deck Information	5
Engine Information	5
PHOTOS	6
52_2803204_midship_wet_coolers	6
53_2803204_fender_storage_locker	6
55_2803204_port_side_aft_deck	6
54_2803204_starboard_aft_deck	6
56_2803204_helm_view_from_aft_deck	7
59_2803204_rod_holders	7
1_2803204_ready_for_any_adventure	7
2_2803204_helm_with_full_view_for_bad_weather_days	7
4_2803204_bow_access	8
3_2803204_49_sq_ft_helm	8
5_2803204_gunnel_view	8
6_2803204_helm_view	8
8_2803204_bow_pulpit	9
9_2803204_port_view	9
10_2803204_starboard_view	9
11_2803204_starboard_helm_view	9
12_2803204_yamaha_250_four_stroke	9
13_2803204_yamaha_engine_cover	9

---

14_2803204_yamaha_250_with_only_70_hours	10
15_2803204_outboard_view	10
16_2803204_outboard_view	10
18_2803204_helm_view_from_aft_cabin	10
19_2803204_electronics_and_gauges	10
20_2803204_garmin_gps	10
22_2803204_throttle	11
21_2803204_stock_gauges	11
23_2803204_captains_chair	11
24_2803204_switch_panel	11
25_2803204_helm_view_from_portside	11
26_2803204_port	11
27_2803204_helm_chair	12
28_2803204_helm	12
29_2803204_t_bag_with_life_jackets	12
30_2803204_overhead_storage	12
32_2803204_cd_player_vhf	12
33_2803204_under_seat_storage	12
34_2803204_adjustable_helm_seating	13
35_2803204_captains_chair_storage	13
36_2803204_helm_view	13
37_2803204_cuddy_cabin	13
38_2803204_bow_hatch	13
39_2803204_anchor_storage	13
42_2803204_hidden_porta_potty	14
41_2803204_cuddy_cabin	14
43_2803204_removable_porta_potty	14
44_2803204_helm_to_aft_view	14
45_2803204_wide_beam_aft_deck	15

---

---

46_2803204_battery_hatch_aft	15
48_2803204_livewell_aft	15
47_2803204_livewell	15
49_2803204_bilge_battery	15
50_2803204_fuel_filter	15
51_2803204_livewell_pump	16
<b>CONTACTS</b>	<b>17</b>
Contact details	17
Telephones	17
Office hours	17
Address	17

---

# SPECIFICATIONS

---

## Overview

---

Discover the perfect blend of fishing and family fun with this exceptional 2001 Grady White 228 Seafarer. With its reputation for quality construction and a legacy of seaworthiness, this boat is ideal for both avid anglers and those seeking enjoyable days on the water. Whether you're planning a fishing expedition or a relaxing cruise with friends and family, this Grady White is up for the task. This is a 1 owner vessel, kept and maintained to the highest standard. Tide 'N Knots was repowered with a 4 stroke Yamaha 250 and has approximately 70 hours on her. Located in Key Largo, Florida.

## Basic Information

---

**Category:** cruiser

**Model Year:** 2001

**Year Built:** 2001

**Country:** United States

## Dimensions

---

**LOA:** 22' (6.71mm)

## Speed, Capacities and Weight

---

**Water Capacity:** 10 Gallons

**Fuel Capacity:** 114 Gal Gallons

## Accommodations

---

**Total Cabins:** 1

## Hull and Deck Information

---

**Hull Material:** Fiberglass

## Engine Information

---

**Engines:** 1

**Manufacturer:** Yamaha

# PHOTOS

52\_2803204\_midship\_wet\_coolers



53\_2803204\_fender\_storage\_locker



54\_2803204\_starboard\_aft\_deck



55\_2803204\_port\_side\_aft\_deck



56\_2803204\_helm\_view\_from\_aft\_deck



59\_2803204\_rod\_holders



1\_2803204\_ready\_for\_any\_adventure



2\_2803204\_helm\_with\_full\_view\_for\_bad\_weather\_days



4\_2803204\_bow\_access



3\_2803204\_49\_sq\_ft\_helm



5\_2803204\_gunnel\_view



6\_2803204\_helm\_view





8\_2803204\_bow\_pulpit



9\_2803204\_port\_view



10\_2803204\_starboard\_view



11\_2803204\_starboard\_helm\_view



12\_2803204\_yamaha\_250\_four\_stroke



13\_2803204\_yamaha\_engine\_cover



14\_2803204\_yamaha\_250\_with\_only\_70\_hours



15\_2803204\_outboard\_view



16\_2803204\_outboard\_view



18\_2803204\_helm\_view\_from\_aft\_cabin



19\_2803204\_electronics\_and\_gauges



20\_2803204\_garmin\_gps



21\_2803204\_stock\_gauges



22\_2803204\_throttle



23\_2803204\_captains\_chair



24\_2803204\_switch\_panel



25\_2803204\_helm\_view\_from\_portside



26\_2803204\_port



27\_2803204\_helm\_chair



28\_2803204\_helm



29\_2803204\_t\_bag\_with\_life\_jackets



30\_2803204\_overhead\_storage



32\_2803204\_cd\_player\_vhf



33\_2803204\_under\_seat\_storage



34\_2803204\_adjustable\_helm\_seating



35\_2803204\_captains\_chair\_storage



36\_2803204\_helm\_view



37\_2803204\_cuddy\_cabin



38\_2803204\_bow\_hatch



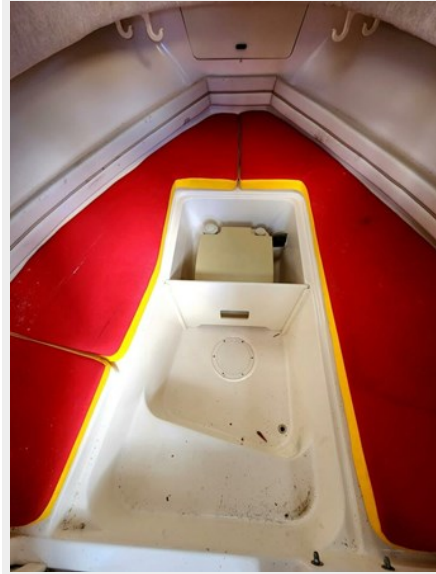
39\_2803204\_anchor\_storage



41\_2803204\_cuddy\_cabin



42\_2803204\_hidden\_porta\_potty



43\_2803204\_removable\_porta\_potty



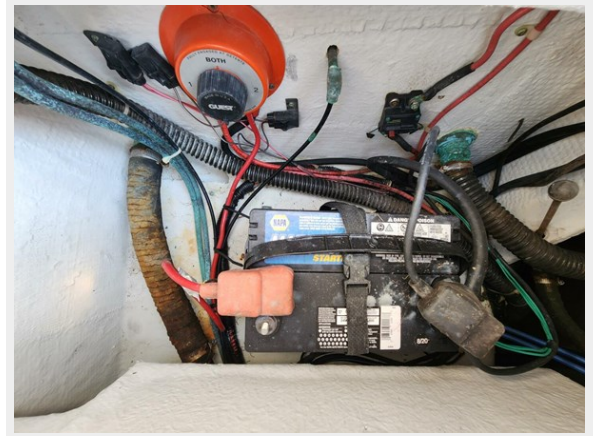
44\_2803204\_helm\_to\_aft\_view



45\_2803204\_wide\_beam\_aft\_deck



46\_2803204\_battery\_hatch\_aft



47\_2803204\_livewell



48\_2803204\_livewell\_aft



49\_2803204\_bilge\_battery



50\_2803204\_fuel\_filter



51\_2803204\_livewell\_pump





# CONTACTS

---

Andrey Shestakov, leading yacht broker of the sales department of Shestakov Yacht Sales Inc. Shestakov Yacht Sales Inc., the official representative of the Miami/Fort Lauderdale FL headquarters.

## Contact details

---

Email: **andrey@shestakovyachtsales.com**

Web: [shestakovyachtsales.com/en/](http://shestakovyachtsales.com/en/)

## Telephones

---

USA: +1(954)274-4435

## Office hours

---

Monday – Saturday: **9:00 - 21:00 EDT**

Sunday: **closed**

## Address

---



Harbour Towne Marina, 850 NE 3rd St,  
STE 213, Dania, FL 33004