

DIXIELAND — MARINER



Builder: MARINER

Year Built: 2007

Model: cruiser

Price: \$180,000 USD

Location: United States

LOA: 40' (12.19mm)

Beam: 13.08

Min Draft: 4' (1.22mm)

Our experienced yacht broker, Andrey Shestakov, will help you choose and buy a yacht that best suits your needs **Dixieland — MARINER** from our catalogue. Presently, at Shestakov Yacht Sales Inc., we have a wide variety of yachts available on our sale's list. We also work in close contact with all the big yacht manufacturers from all over the world.

If you would like to buy a yacht **Dixieland — MARINER** or would like help answering any questions concerning purchasing, selling or chartering a yacht, please call **+1(954)274-4435**

TABLE OF CONTENTS

TABLE OF CONTENTS	2
SPECIFICATIONS	5
Overview	5
Basic Information	5
Dimensions	5
Speed, Capacities and Weight	5
Accommodations	5
Hull and Deck Information	5
Engine Information	5
PHOTOS	6
28_2802848_40_mariner_salon_port	6
29_2802848_40_mariner_salon_starboard	6
30_2802848_40_mariner_salon_port_seating	6
31_2802848_40_mariner_salon_starboard_seating	6
32_2802848_40_mariner_salon_storage	6
33_2802848_40_mariner_lower_helm1	6
34_2802848_40_mariner_lower_helm2	7
35_2802848_40_mariner_galley1	7
36_2802848_40_mariner_galley2	7
37_2802848_40_mariner_galley_refrigeration	7
38_2802848_40_mariner_master_stateroom	7
39_2802848_40_mariner_master_stateroom_port	7
41_2802848_40_mariner_guest_stateroom	8
40_2802848_40_mariner_master_stateroom_starboard	8
42_2802848_40_mariner_head	8
43_2802848_40_mariner_shower	8
44_2802848_40_mariner_engine_room_access	9
45_2802848_40_mariner_engine_room_forward	9

46_2802848_40_mariner_engine_room_port_aft	9
47_2802848_40_mariner_engine_room_starboard_aft	9
48_2802848_40_mariner_main_engine1	9
49_2802848_40_mariner_main_engine2	9
50_2802848_40_mariner_racor_fuel_filters	10
51_2802848_40_mariner_water_heater	10
52_2802848_40_mariner_electrical_panel1	10
53_2802848_40_mariner_electrical_panel2	10
54_2802848_40_mariner_generator_soundbox	10
55_2802848_40_mariner_generator	10
56_2802848_40_mariner_battery_charger	11
0_2802848_40_mariner_port_profile	11
2_2802848_40_mariner_aft_profile	11
1_2802848_40_mariner_starboard_forward_profile	11
3_2802848_40_mariner_anchor_windlass	11
4_2802848_40_mariner_foredeck	11
6_2802848_40_mariner_port_side_deck1	12
5_2802848_40_mariner_foredeck_aft	12
7_2802848_40_mariner_port_side_deck2	12
8_2802848_40_mariner_starboard_side_deck1	12
9_2802848_40_mariner_starboard_side_deck2	13
10_2802848_40_mariner_flybridge_forward	13
11_2802848_40_mariner_flybridge_aft	13
12_2802848_40_mariner_flybridge_port	13
13_2802848_40_mariner_flybridge_starboard	13
14_2802848_40_mariner_flybridge_helm	13
15_2802848_40_mariner_flybridge_helmseats	14
16_2802848_40_mariner_mast_base_hinge	14
17_2802848_40_mariner_flybridge_aftdeck_ladder	14

18_2802848_40_mariner_aftdeck1	14
19_2802848_40_mariner_aftdeck2	14
20_2802848_40_mariner_aftdeck_forward	14
21_2802848_40_mariner_aftdeck_port	15
22_2802848_40_mariner_aftdeck_starboard	15
23_2802848_40_mariner_aftdeck_flybridge_ladder	15
25_2802848_40_mariner_swimplatform	15
26_2802848_40_mariner_salon_forward	15
27_2802848_40_mariner_salon_aft	15
CONTACTS	16
Contact details	16
Telephones	16
Office hours	16
Address	16

SPECIFICATIONS

Overview

Dixieland is a 2007 40' Mariner Orient in nice condition. She offers a single Yanmar 370 HP main engine, Onan 6.5 kW generator, Vetus bowthruster, Furuno electronics and a two-stateroom layout. With her 12'6" height above the waterline, she is a perfect Great Loop candidate. Located in Reedville, Virginia.

Basic Information

Category: cruiser

Model Year: 2007

Year Built: 2007

Country: United States

Dimensions

LOA: 40' (12.19mm)

Beam: 13.08

Min Draft: 4' (1.22mm)

Speed, Capacities and Weight

Water Capacity: 140 Gallons

Holding Tank: 40 Gal Gallons

Fuel Capacity: 300 Gal Gallons

Accommodations

Total Cabins: 2

Hull and Deck Information

Hull Material: Fiberglass

Engine Information

Engines: 1

Manufacturer: Yanmar

PHOTOS

28_2802848_40_mariner_salon_port



29_2802848_40_mariner_salon_starboard



30_2802848_40_mariner_salon_port_seating



31_2802848_40_mariner_salon_starboard_seating



32_2802848_40_mariner_salon_storage



33_2802848_40_mariner_lower_helm1



34_2802848_40_mariner_lower_helm2



35_2802848_40_mariner_galley1



36_2802848_40_mariner_galley2



37_2802848_40_mariner_galley_refrigeration



38_2802848_40_mariner_master_stateroom



39_2802848_40_mariner_master_stateroom_port



41_2802848_40_mariner_guest_stateroom

40_2802848_40_mariner_master_stateroom_starboard



42_2802848_40_mariner_head

43_2802848_40_mariner_shower



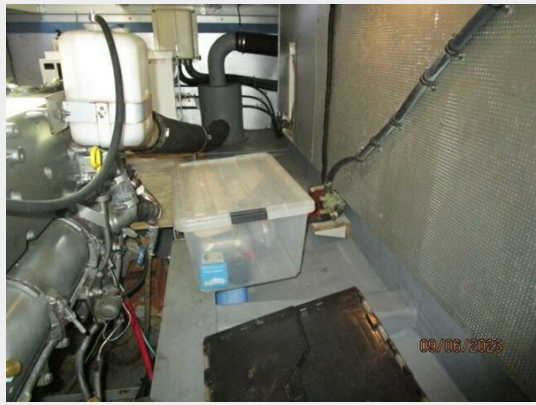
44_2802848_40_mariner_engine_room_access



45_2802848_40_mariner_engine_room_forward



46_2802848_40_mariner_engine_room_port_aft 47_2802848_40_mariner_engine_room_starboard_aft



48_2802848_40_mariner_main_engine1



49_2802848_40_mariner_main_engine2



50_2802848_40_mariner_racor_fuel_filters



51_2802848_40_mariner_water_heater



52_2802848_40_mariner_electrical_panel1



53_2802848_40_mariner_electrical_panel2



54_2802848_40_mariner_generator_soundbox



55_2802848_40_mariner_generator



56_2802848_40_mariner_battery_charger



0_2802848_40_mariner_port_profile



2_2802848_40_mariner_aft_profile



1_2802848_40_mariner_starboard_forward_profile



3_2802848_40_mariner_anchor_windlass



4_2802848_40_mariner_foredeck



6_2802848_40_mariner_port_side_deck1



5_2802848_40_mariner_foredeck_aft



7_2802848_40_mariner_port_side_deck2



8_2802848_40_mariner_starboard_side_deck1



9_2802848_40_mariner_starboard_side_deck2



10_2802848_40_mariner_flybridge_forward



11_2802848_40_mariner_flybridge_aft



12_2802848_40_mariner_flybridge_port



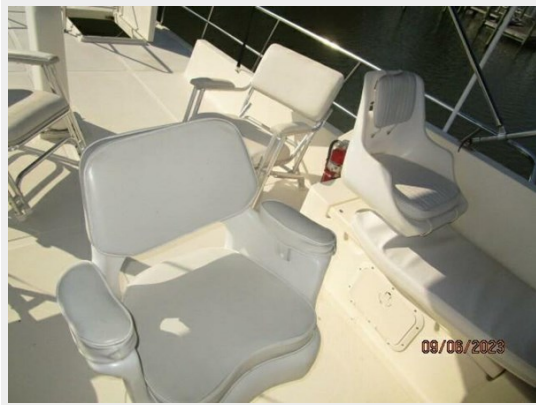
13_2802848_40_mariner_flybridge_starboard



14_2802848_40_mariner_flybridge_helm



15_2802848_40_mariner_flybridge_helmseats



16_2802848_40_mariner_mast_base_hinge



17_2802848_40_mariner_flybridge_aftdeck_ladder



18_2802848_40_mariner_aftdeck1



19_2802848_40_mariner_aftdeck2



20_2802848_40_mariner_aftdeck_forward



21_2802848_40_mariner_aftdeck_port



22_2802848_40_mariner_aftdeck_starboard



23_2802848_40_mariner_aftdeck_flybridge_ladder



25_2802848_40_mariner_swimplatform



26_2802848_40_mariner_salon_forward



27_2802848_40_mariner_salon_aft



CONTACTS

Andrey Shestakov, leading yacht broker of the sales department of Shestakov Yacht Sales Inc. Shestakov Yacht Sales Inc., the official representative of the Miami/Fort Lauderdale FL headquarters.

Contact details

Email:
andrey@shestakovyachtsales.com

Web: shestakovyachtsales.com/en/

Telephones

USA: **+1(954)274-4435**

Office hours

Monday – Saturday: **9:00 - 21:00 EDT**

Sunday: **closed**

Address



Harbour Towne Marina, 850 NE 3rd St,
STE 213, Dania, FL 33004