

SPLENDIDA — OVERMARINE GROUP



Builder: OVERMARINE GROUP

Year Built: 2003

Model: Motor Yacht

Price: €2,500,000 EUR

Location: Monaco

LOA: 109' 11" (33.48mm)

Beam: 23.35

Max Draft: 5' 11" (1.8mm)

Cruise Speed: 28 Knots Kts. (32 MPH)

Max Speed: 35 Knots Kts. (40 MPH)

Our experienced yacht broker, Andrey Shestakov, will help you choose and buy a yacht that best suits your needs **SPLENDIDA — OVERMARINE GROUP** from our catalogue. Presently, at Shestakov Yacht Sales Inc., we have a wide variety of yachts available on our sale's list. We also work in close contact with all the big yacht manufacturers from all over the world.

If you would like to buy a yacht **SPLENDIDA — OVERMARINE GROUP** or would like help answering any questions concerning purchasing, selling or chartering a yacht, please call **+1(954)274-4435**

TABLE OF CONTENTS

TABLE OF CONTENTS	2
SPECIFICATIONS	4
Overview	4
Basic Information	4
Dimensions	4
Speed, Capacities and Weight	5
Accommodations	5
Hull and Deck Information	5
Engine Information	5
PHOTOS	6
1_photoshopped	6
2_photoshopped	6
5	6
large_3652340	6
3	6
large_3652345	6
large_3652347	7
large_3652350	7
large_3652349	7
large_3652348	7
26	7
large_3652351	7
9	8
large_3652353	8
11	8
large_3652355	8
15	8
12	8

large_3652356	9
large_3652359	9
14	9
large_3652361-2	9
27	9
28	9
29	10
30	10
32	10
33	10
7	10
large_3652362	10
large_3652365	11
large_3652364	11
CONTACTS	12
Contact details	12
Telephones	12
Office hours	12
Address	12

SPECIFICATIONS

Overview

Discover M/Y SPLENDIDA, the embodiment of nautical excellence and luxury, magnificently realized as hull number 9 in the revered Mangusta 108 range by Overmarine in Italy. This 33.50m motor yacht, crafted meticulously in 2003 and designed by the illustrious Stefano Righini, stands as a testament to timeless elegance and innovative design. SPLENDIDA surpasses her peers with an unparalleled layout, featuring a full-beam master cabin and three additional staterooms, offering supreme comfort for up to 8 guests. Additionally, she boasts meticulous accommodation for 4 crew members, ensuring a seamless and luxurious journey through azure landscapes. M/Y SPLENDIDA is not just a fast cruiser capable of reaching a thrilling top speed of 35 knots; she is a luxurious oasis on the sea, featuring a generous beach club and ample storage for a tender and two jet skis, allowing for countless oceanic adventures. Maintained and refitted to the highest standards, SPLENDIDA showcases a refreshing new teak, meticulously serviced engines and generators in 2022, and a comprehensive 10-year Kamewa service completed in 2018. Sailing proudly under the Monaco flag with EU VAT paid, she is a symbol of prestige and luxury on the high seas. Experience the allure of the splendid M/Y SPLENDIDA, where every journey is a voyage through unparalleled luxury, every moment aboard is a whisper of opulence, and every detail speaks of nautical sophistication. Welcome aboard SPLENDIDA, your gateway to the epitome of maritime elegance and the zenith of luxurious sea voyages.

Basic Information

Category: Motor Yacht

Model Year: 2003

Year Built: 2003

Refit Type: main deck

Country: Monaco

Dimensions

LOA: 109' 11" (33.48mm)

Beam: 23.35

Max Draft: 5' 11" (1.8mm)

Speed, Capacities and Weight

Cruise Speed: 28 Knots Kts. (32 MPH)

Cruise Speed Range: 450

Max Speed: 35 Knots Kts. (40 MPH)

Max Speed Range: 370 Kts.

Gross Tonnage: 181 Pounds

Water Capacity: 2000 Gallons

Fuel Capacity: 14000 Gal Gallons

Accommodations

Total Cabins: 4

Sleeps: 8

Crew Cabin: 4

Hull and Deck Information

Hull Material: GRP

Deck Material: Teak

Hull Designer: Overmarine

Exterior Designer: Stefano Righini

Interior Designer: Stefano Righini

Engine Information

Engines: 2

Manufacturer: MTU

PHOTOS

1_photoshopped



2_photoshopped



large_3652340



5



3



large_3652345



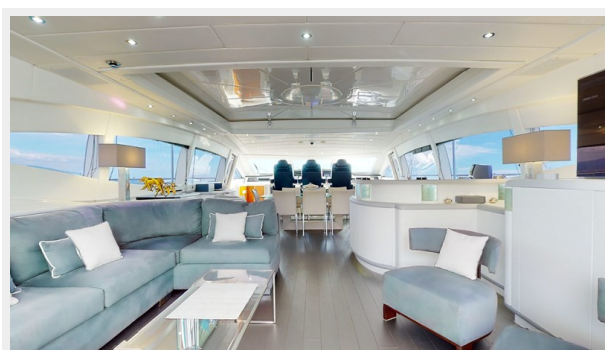
large_3652347



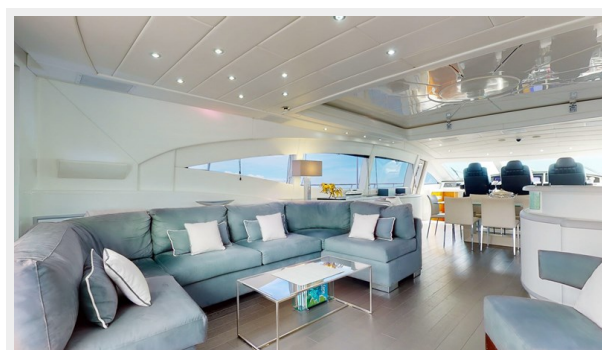
large_3652350



large_3652349



large_3652348



26



large_3652351



9



large_3652353



11



large_3652355



15



12



large_3652356



large_3652359



14



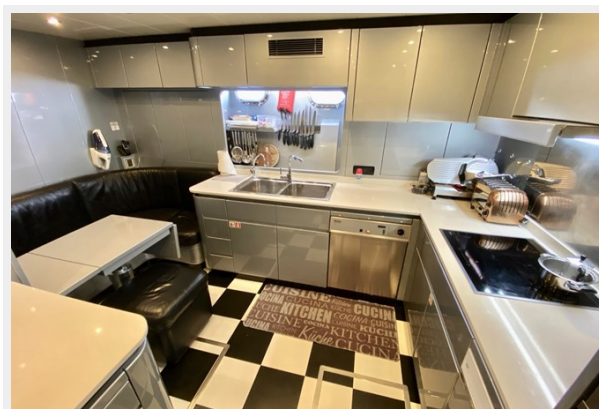
large_3652361-2



27



28



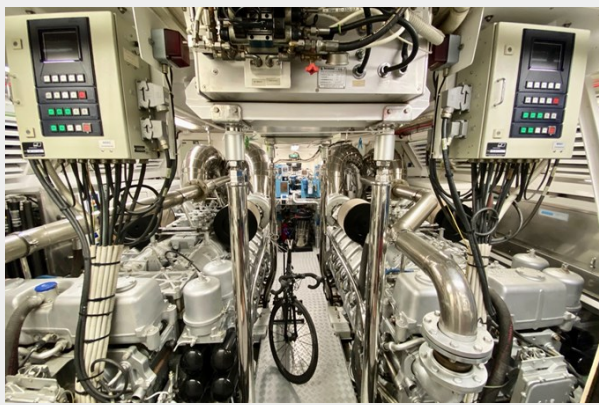
29



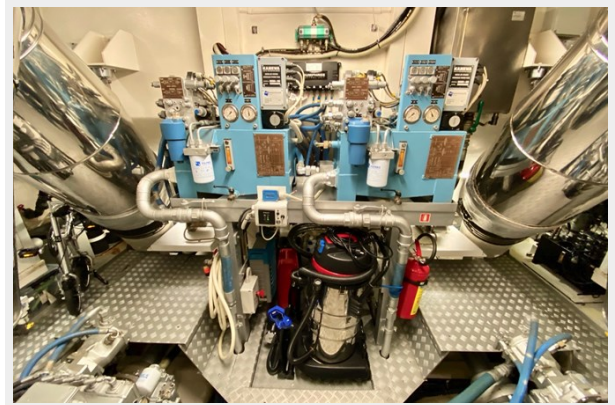
30



32



33



7



large_3652362



large_3652365



large_3652364



CONTACTS

Andrey Shestakov, leading yacht broker of the sales department of Shestakov Yacht Sales Inc. Shestakov Yacht Sales Inc., the official representative of the Miami/Fort Lauderdale FL headquarters.

Contact details

Email: andrey@shestakovyachtsales.com

Web: shestakovyachtsales.com/en/

Telephones

USA: +1(954)274-4435

Office hours

Monday – Saturday: **9:00 - 21:00** EDT

Sunday: **closed**

Address



Harbour Towne Marina, 850 NE 3rd St,
STE 213, Dania, FL 33004