

GONNA BE ALRIGHT — CRUISERS YACHTS



Builder: CRUISERS YACHTS

Year Built: 2016

Model: Aft Cabin

Price: \$599,000 USD

Location: United States

LOA: 45' (13.72mm)

Beam: 14.5

Max Draft: 3' 5" (1.04mm)

Cruise Speed: 23 Knots Kts. (26 MPH)

Max Speed: 30 Knots Kts. (35 MPH)

Our experienced yacht broker, Andrey Shestakov, will help you choose and buy a yacht that best suits your needs **GONNA BE ALRIGHT — CRUISERS YACHTS** from our catalogue. Presently, at Shestakov Yacht Sales Inc., we have a wide variety of yachts available on our sale's list. We also work in close contact with all the big yacht manufacturers from all over the world.

If you would like to buy a yacht **GONNA BE ALRIGHT — CRUISERS YACHTS** or would like help answering any questions concerning purchasing, selling or chartering a yacht, please call **+1(954)274-4435**

TABLE OF CONTENTS

TABLE OF CONTENTS	2
SPECIFICATIONS	4
Overview	4
Basic Information	4
Dimensions	4
Speed, Capacities and Weight	4
Accommodations	5
Hull and Deck Information	5
Engine Information	5
PHOTOS	6
GPTempDownload (1)	8
GPTempDownload (24)	8
GPTempDownload (3)	9
GPTempDownload (2)	9
GPTempDownload (25)	9
GPTempDownload (19)	10
GPTempDownload (14)	10
GPTempDownload (12)	11
GPTempDownload (13)	11
GPTempDownload (15)	11
GPTempDownload (16)	11
GPTempDownload (17)	12
GPTempDownload (11)	12
GPTempDownload (6)	13
GPTempDownload (18)	13
CONTACTS	15
Contact details	15
Telephones	15

Office hours 15

Address 15

SPECIFICATIONS

Overview

Incredible layout with low hours! Optioned out!! Low hour twin Volvo D6 IPS 435 hp engines with joystick docking, Garmin Electronics Suite, (2) 12 inch color screen Navigational/HD Radar/sounder units, plus 9" Garmin screen dedicated to engine data. Hydraulic swim/dinghy platform, SureShade power cockpit shade. Cockpit grill, sink, Refrigerator, Ice Maker with (2) removable Barstools, Aft glass wall opens for direct access into the Galley, making this a great boat for entertaining family and friends. Huge power sunroof, upgraded sound system, flat screen HDTV with SAT and Over-air Digital TV antennas. 2 stateroom / 2 head layout. Excellent visibility from the salon/galley/helm with huge windows and a fully heated/air conditioned interior.

Basic Information

Category: Aft Cabin

Sub Category: Aft Cabin

Model Year: 2016

Year Built: 2016

Country: United States

Dimensions

LOA: 45' (13.72mm)

Beam: 14.5

Max Draft: 3' 5" (1.04mm)

Speed, Capacities and Weight

Cruise Speed: 23 Knots Kts. (26 MPH)

Max Speed: 30 Knots Kts. (35 MPH)

Water Capacity: 100 Gallons

Holding Tank: 48 Gal Gallons

Fuel Capacity: 362 Gal Gallons

Accommodations

Total Cabins: 2

Total Heads: 2

Hull and Deck Information

Hull Material: Fiberglass

Engine Information

Engines: 2

Manufacturer: Volvo Penta

Engine Type: Inboard

Fuel Type: Diesel

PHOTOS







GPTempDownload (1)



GPTempDownload (24)



GPTempDownload (3)



GPTempDownload (2)



GPTempDownload (25)





GPTempDownload (19)

GPTempDownload (14)



GPTempDownload (12)



GPTempDownload (13)



GPTempDownload (15)



GPTempDownload (16)



GPTempDownload (17)



GPTempDownload (11)

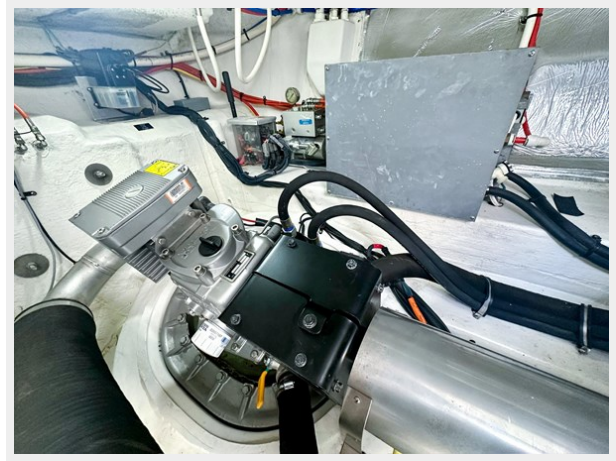


GPTempDownload (6)



GPTempDownload (18)





CONTACTS

Andrey Shestakov, leading yacht broker of the sales department of Shestakov Yacht Sales Inc. Shestakov Yacht Sales Inc., the official representative of the Miami/Fort Lauderdale FL headquarters.

Contact details

Email: andrey@shestakovyachtsales.com

Web: shestakovyachtsales.com/en/

Telephones

USA: +1(954)274-4435

Office hours

Monday – Saturday: **9:00 - 21:00** EDT

Sunday: **closed**

Address



Harbour Towne Marina, 850 NE 3rd St,
STE 213, Dania, FL 33004