

AL DI LA — GRAND ALASKAN



Builder: GRAND ALASKAN

Year Built: 2007

Model: Motor Yacht

Price: \$2,695,000 USD

Location: United States

LOA: 90' (27.43mm)

Beam: 18.5

Max Draft: 6' (1.83mm)

Our experienced yacht broker, Andrey Shestakov, will help you choose and buy a yacht that best suits your needs **AL DI LA — GRAND ALASKAN** from our catalogue. Presently, at Shestakov Yacht Sales Inc., we have a wide variety of yachts available on our sale's list. We also work in close contact with all the big yacht manufacturers from all over the world.

If you would like to buy a yacht **AL DI LA — GRAND ALASKAN** or would like help answering any questions concerning purchasing, selling or chartering a yacht, please call **+1(954)274-4435**

TABLE OF CONTENTS

TABLE OF CONTENTS	2
SPECIFICATIONS	3
Overview	3
Basic Information	3
Dimensions	3
Speed, Capacities and Weight	3
Accommodations	4
Hull and Deck Information	4
Engine Information	4
PHOTOS	5
CONTACTS	20
Contact details	20
Telephones	20
Office hours	20
Address	20

SPECIFICATIONS

Overview

This Custom Alaskan Sky lounge Pilothouse is quite simply the best of everything for cruising the pacific NW and beyond! With custom Fishing cockpit, she's been extremely well planned and outfitted with the best equipment to provide versatility, luxury and fun. She is easily crewed two, this LRC is ideal for the owner-operator that crises and entertains with guests and family. Twin Cat 1015hp. mains can run at 6-12 kt. trawler speeds or 16-18 knots to outrun the weather. Everything is sized to do the job easily. Also on the bridge deck is a 30 in. propane Stainless Steel BBQ the BBQ chef will be super happy. Top finishes include granite, Sapele wood with burl inlays, cherry, holy and teak sole, etched frameless glass cedar locker linings and more. You'll enjoy four ensuite staterooms plus a lavish double crew cabin that can be used a 5th stateroom when needed. Top-of-the-line navigation, electronic and domestic gear. See her full specifications and recent photos online here, then call for additional details or to schedule a showing.

Basic Information

Category: Motor Yacht

Model Year: 2007

Year Built: 2007

Country: United States

Dimensions

LOA: 90' (27.43mm)

Beam: 18.5

Max Draft: 6' (1.83mm)

Speed, Capacities and Weight

Water Capacity: 600 Gallons

Fuel Capacity: 2800 Gal Gallons

Accommodations

Total Cabins: 4

Total Berths: 5

Total Heads: 6

Hull and Deck Information

Hull Material: Fiberglass

Engine Information

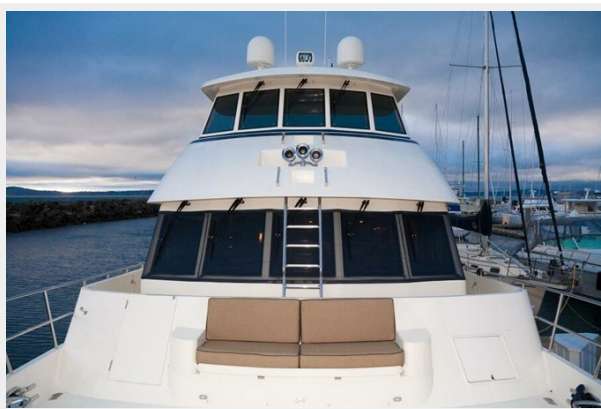
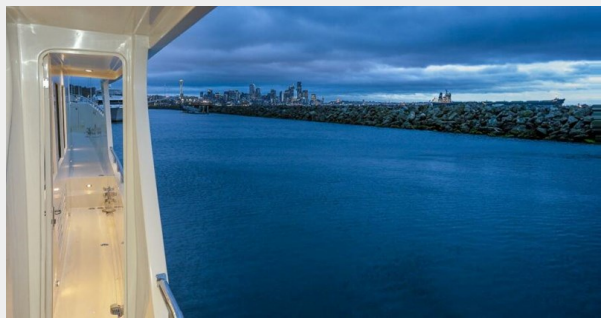
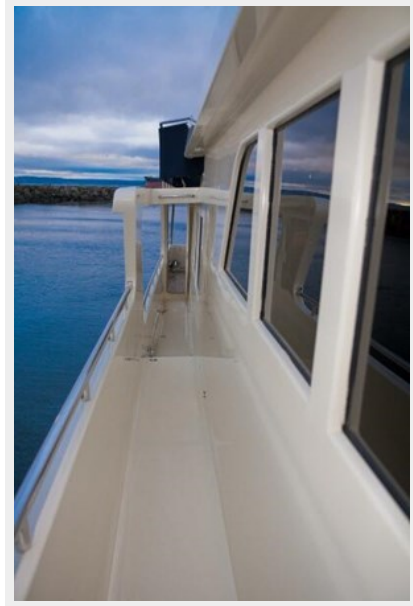
Engines: 2

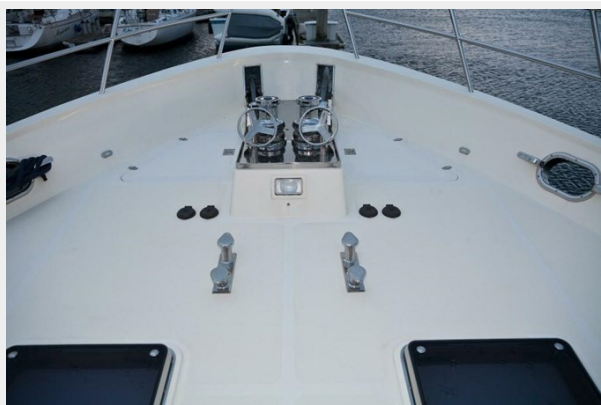
Manufacturer: Caterpillar

Engine Type: Inboard

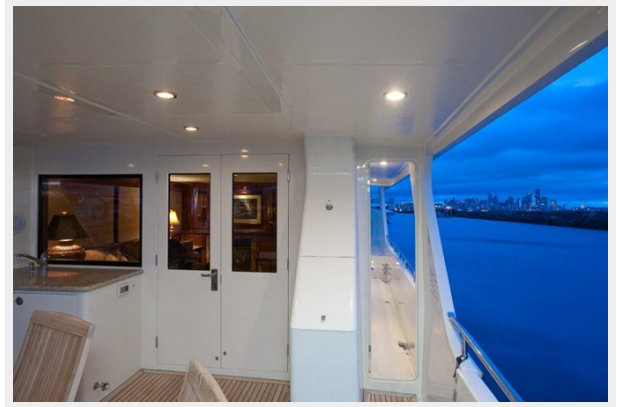
Fuel Type: Diesel

PHOTOS







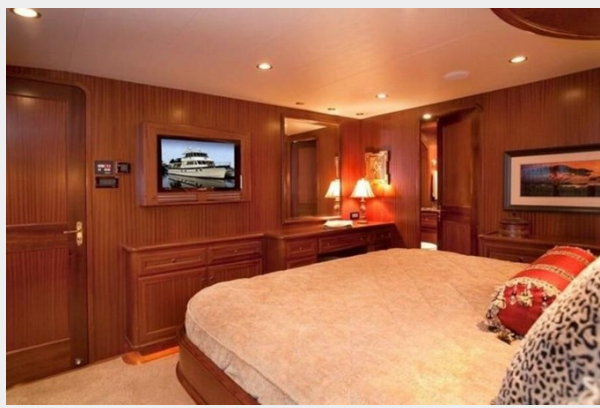








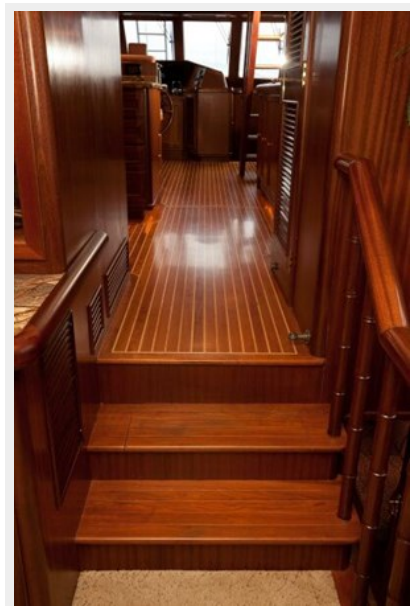
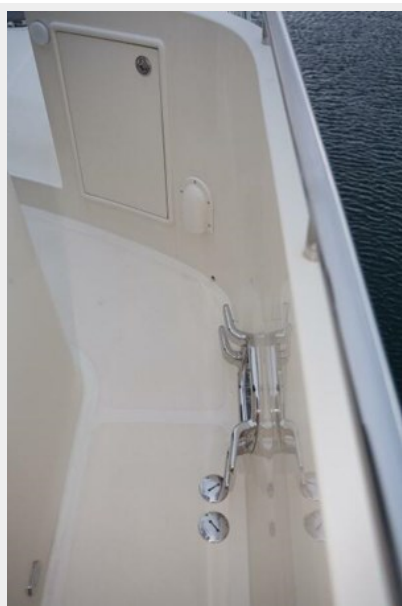


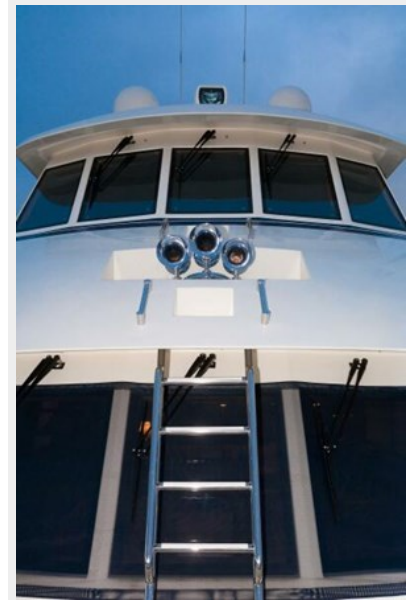














CONTACTS

Andrey Shestakov, leading yacht broker of the sales department of Shestakov Yacht Sales Inc. Shestakov Yacht Sales Inc., the official representative of the Miami/Fort Lauderdale FL headquarters.

Contact details

Email: andrey@shestakovyachtsales.com

Web: shestakovyachtsales.com/en/

Telephones

USA: +1(954)274-4435

Office hours

Monday – Saturday: **9:00 - 21:00** EDT

Sunday: **closed**

Address



Harbour Towne Marina, 850 NE 3rd St,
STE 213, Dania, FL 33004