

ATHENA — ERICSON YACHTS



Builder: ERICSON YACHTS

Year Built: 1972

Model: Cruising or Racing Sailboat

Price: \$84,500 USD

Location: United States

LOA: 46' (14.02mm)

Beam: 13.25

Max Draft: 7' 2" (2.18mm)

Cruise Speed: 6 Knots Kts. (7 MPH)

Max Speed: 7 Knots Kts. (8 MPH)

Our experienced yacht broker, Andrey Shestakov, will help you choose and buy a yacht that best suits your needs **Athena — ERICSON YACHTS** from our catalogue. Presently, at Shestakov Yacht Sales Inc., we have a wide variety of yachts available on our sale's list. We also work in close contact with all the big yacht manufacturers from all over the world.

If you would like to buy a yacht **Athena — ERICSON YACHTS** or would like help answering any questions concerning purchasing, selling or chartering a yacht, please call **+1(954)274-4435**

TABLE OF CONTENTS

TABLE OF CONTENTS	2
SPECIFICATIONS	4
Overview	4
Basic Information	4
Dimensions	4
Speed, Capacities and Weight	4
Accommodations	4
Hull and Deck Information	5
Engine Information	5
PHOTOS	6
2	6
3	6
4	6
5	6
6	6
7	6
8	7
9	7
10	7
11	7
12	7
13	7
14	8
15	8
16	8
17	8
18	8
19	8

20	9
21	9
22	9
23	9
24	9
25	9
26	10
27	10
29	10
28	10
31	11
30	11
32	11
33	11
34	12
CONTACTS	13
Contact details	13
Telephones	13
Office hours	13
Address	13

SPECIFICATIONS

Overview

THIS BOAT HAS JUST COMPLETED 12 MONTH REFIT. HULL AND DECK AND INTERIOR PAINT. NEW ELECTRICAL PANELS /LED LIGHTS/BATTERIES NEW ELECTRONICS AND SAILING INSTRUMENTS NEW SAILS/HALYARDS AND CANVAS NEW LIFELINES INTERIOR MOTOR WAS SERVICED AND UPGRADED BY PAUL WALKER THIS AND MORE DONE IN LAST 12 MONTHS

Basic Information

Category: Cruising or Racing Sailboat

Model Year: 1972

Year Built: 1972

Country: United States

Dimensions

LOA: 46' (14.02mm)

LWL: 35' (10.67mm)

Beam: 13.25

Max Draft: 7' 2" (2.18mm)

Speed, Capacities and Weight

Cruise Speed: 6 Knots Kts. (7 MPH)

Max Speed: 7 Knots Kts. (8 MPH)

Water Capacity: 100 Gallons

Holding Tank: 15 Gal Gallons

Fuel Capacity: 25 Gal Gallons

Accommodations

Total Cabins: 2

Total Berths: 5

Total Heads: 2

Hull and Deck Information

Hull Material: Fiberglass

Engine Information

Engines: 1

Manufacturer: Perkins

PHOTOS

2



3



4



5



6



7



8



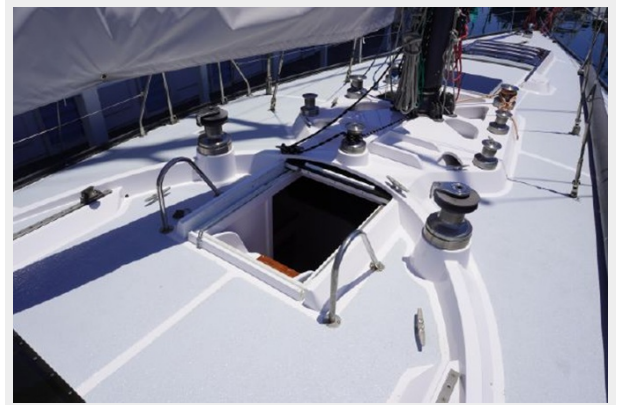
9



10



11



12



13



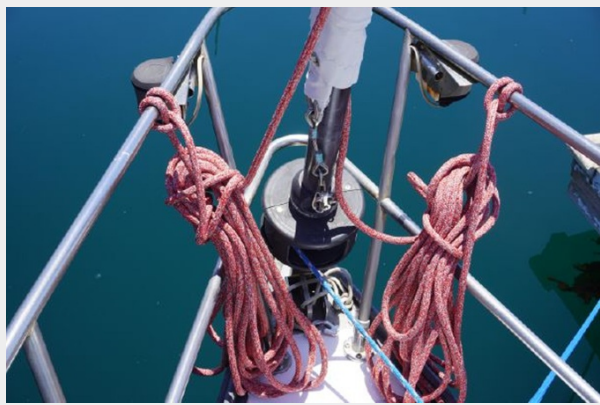
14



15



16



17



18



19



20



21



22



23



24



25



26



27



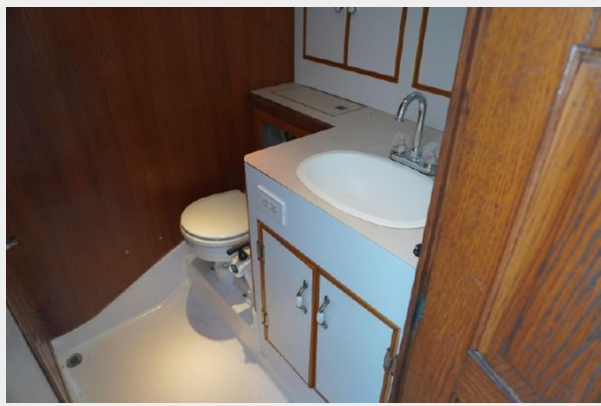
29



28



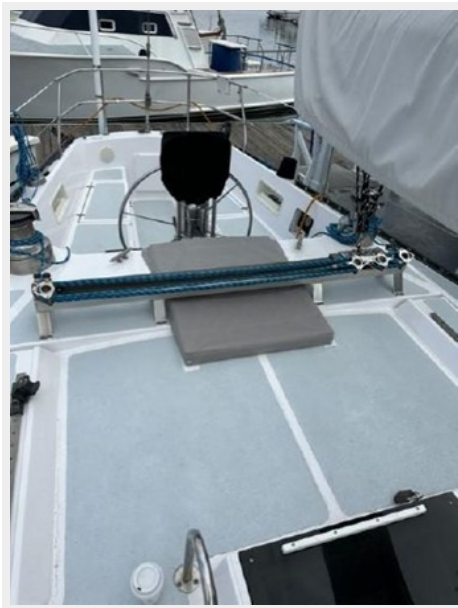
30



31



32



33



34



CONTACTS

Andrey Shestakov, leading yacht broker of the sales department of Shestakov Yacht Sales Inc. Shestakov Yacht Sales Inc., the official representative of the Miami/Fort Lauderdale FL headquarters.

Contact details

Email: andrey@shestakovyachtsales.com

Web: shestakovyachtsales.com/en/

Telephones

USA: +1(954)274-4435

Office hours

Monday – Saturday: **9:00 - 21:00** EDT

Sunday: **closed**

Address



Harbour Towne Marina, 850 NE 3rd St,
STE 213, Dania, FL 33004